



International Journal of Housing and Human Settlement Planning (IJHHSP)



Subscription Rate

Print 3500/- Online 6500/-
Print + Online 7315/-

eISSN: 2455-8516, Starting Year 2015

International Journal of Housing and Human Settlement Planning [2455-8516(e)] is a peer-reviewed hybrid open-access journal launched in 2015 is an architectural journal that covers a wide range of topics including sustainable cities, island developing states, real estate settlement issues, building material technology and another field that are related to architectural issues in housing and settlement planning.

Journal DOI no.: 10.37628/IJHHSP

Indexed in: Advanced Science Index (ASI), Index Copernicus, Scientific Literature (SCILIT), Genamics, Journal TOCs, SJIF, Google Scholar

Issues Per Year (Frequency): 2 Issues (Jan-June, July-Dec)

Focus and Scope

- Rural Human Settlement of housing
- Incremental Housing
- Development Projects of housing
- Sustainable Human Settlement
- Cape Town of human and housing
- Community Planning of human
- Settlement of Rural Human
- Land reform

International Journal of Architecture and Infrastructure Planning (IJAIP)



Subscription Rate

Print 3500/- Online 6500/-
Print + Online 7315/-

eISSN: 2456-0154, Starting Year 2015

International Journal of Architectural and Infrastructure Planning [2456-0154(e)] is a peer-reviewed hybrid open-access journal launched in 2015 with all these trends allowing the perfect distribution of work in all stages of the construction process and thus enabling proper execution with fewer inaccuracies, the popularity of BIM (Building Information Modeling) is reaching new heights.

Journal DOI no.: 10.37628/IJAIP

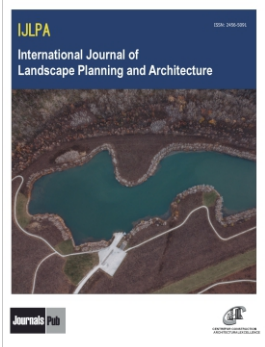
Indexed in: Advanced Science Index (ASI), Scientific Literature (SCILIT), Genamics, Journal TOCs, Index Copernicus, SJIF, Google Scholar

Issues Per Year (Frequency): 2 Issues (Jan-June, July-Dec)

Focus and Scope

- Green Infrastructure
- Landscape Architecture
- Spatial Planning
- Organic Architecture
- Landscape ecology
- Urban Green Infrastructure
- Space green infrastructure
- Charging infrastructure planning
- Enterprise Architecture

International Journal of Landscape Planning and Architecture (IJLPA)



Subscription Rate

Print 3500/- Online 6500/-
Print + Online 7315/-

eISSN: 2456-5091, Starting Year 2015

International Journal of Landscape Planning and Architecture [2456-5091(e)] is a peer-reviewed hybrid open-access journal launched in 2015 that provides a platform that publishes high-quality conference proceedings, original research articles, and editorial reviews from the field of landscape planning, ecosystem analysis, field ecology, and other major related issues.

Journal DOI no.: 10.37628/IJLPA

Indexed in: Advanced Science Index (ASI), Scientific Literature (SCILIT), Genamics, Journal TOCs, Index Copernicus, SJIF, Google Scholar

Issues Per Year (Frequency): 2 Issues (Jan-June, July-Dec)

Focus and Scope

- Landscape Planning
- Landscape Design and Architecture
- Ecological Landscape Design
- Urban Green Infrastructure
- Cultural Landscapes
- Landscape Ecology
- Landscape Management and Governance
- Landscape Performance and Evaluation

International Journal of Town Planning and Management (IJTPM)



Subscription Rate

Print 3500/- Online 6500/-
Print + Online 7315/-

eISSN: 2456-5253, Starting Year 2015

International Journal of Town Planning and Management [2456-5253(e)] is a peer-reviewed hybrid open-access journal launched in 2015. Town planning is the planning and design of all new buildings, roads, and parks in a location to make them more appealing and convenient for the people who live there. The goal of town planning is to meet the needs of future generations while preventing the haphazard growth of the city.

Journal DOI no.: 10.37628/IJTPM

Indexed in: Advanced Science Index (ASI), Scientific Literature (SCILIT), Genamics, Journal TOCs, SJIF, Google Scholar

Issues Per Year (Frequency): 2 Issues (Jan-June, July-Dec)

Focus and Scope

- Planning Process
- New Town Planning
- System Dynamics
- Marine Spatial Planning
- Land use in Architecture
- Smart Town Planning
- Smart City Architecture
- Sustainable Coastal Design
- Strategic Planning
- Landscape Design
- Stormwater Management

International Journal of Architectural Heritage (IJAH)



Subscription Rate

Print 3500/- Online 6500/-
Print + Online 7315/-

eISSN: 2583-2689, Starting Year 2018

International Journal of Architectural Heritage [2583-3278(e)] is a peer-reviewed hybrid open-access journal launched in 2015 that promotes architectural representation through the creation of virtual 3D complex models. These models must contain not only dimensional and geometrical building aspects, but also architectural and constructive ones, describe transformations, and serve as a core for the aggregation, organization, analysis, and management of the vast and heterogeneous number of information associated with an architectural heritage.

Journal DOI no.: 10.37628/IJAH

Indexed in: Index Copernicus, Scientific Literature (SCILIT), Google Scholar

Issues Per Year (Frequency): 2 Issues (Jan-June, July-Dec)

Focus and Scope

- Architectural Virtual Museum
- Architectural Surveying
- Architectural Heritage Value
- Digital Archive
- Structural Safety
- Earthquake Architecture
- Contemporary Architecture
- Spiritual Place
- Regeneration of Economic Heritage
- Heritage Buildings

International Journal of Sustainable Building Technology (IJSBT)



Subscription Rate

Print 3500/- Online 6500/-
Print + Online 7315/-

eISSN: 2583-3278, Starting Year 2018

International Journal of Sustainable Building Technology [2583-3278(e)] is a peer-reviewed hybrid open-access journal launched in 2018 that provides a platform that publishes high-quality manuscripts from the field of climate-responsive architecture, traditional wisdom and sustainable concepts, energy audit & environmental impact assessment, alternative materials and technologies and various areas related to the sustainable building technology.

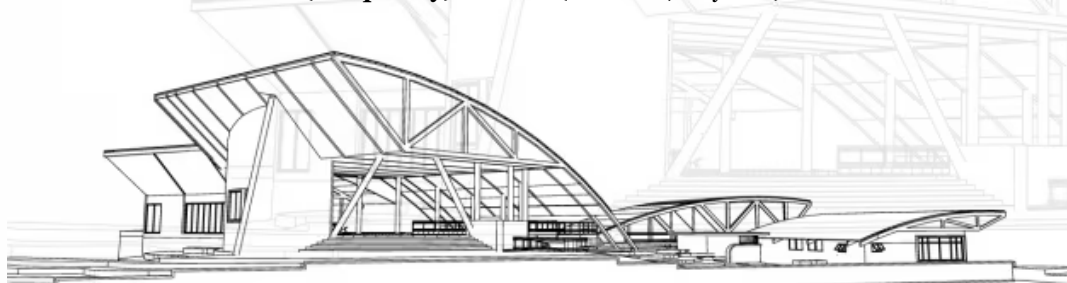
Journal DOI no.: 10.37628/IJSBT

Indexed in: Index Copernicus, Scientific Literature (SCILIT), SJIF, Google Scholar

Issues Per Year (Frequency): 2 Issues (Jan-June, July-Dec)

Focus and Scope

- The technology of Sustainable Building
- Sustainability Assessment
- Rating System of Sustainable Building
- Sustainable Development of Architecture
- Construction Management of Architecture
- Maintenance of Sustainable Building



International Journal of Architectural Design and Planning (IJADP)



Subscription Rate

Print 3500/- Online 6500/-
Print + Online 7315/-

eISSN: 2583-8903, Starting Year 2023

International Journal of Architectural Design and Planning is a peer-reviewed hybrid open-access journal launched in 2023 that covers a wide range of topics including building design and construction, design management and design coordination, facilities management, and various other fields that are related to architectural engineering. The journal aims to create break free communication link between the research communities.

Journal DOI no.: 10.37591/IJADP

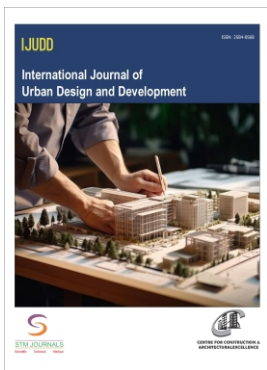
Indexed in: Scientific Literature (SCILIT), Google Scholar

Issues Per Year (Frequency): 2 Issues (Jan-June, July-Dec)

Focus and Scope

- Construction Industry of Architecture Design
- Computer-aided Architectural Design
- Architecture Framework of Design
- Integrated Information Systems of Management
- The Architectural Design of Management:
- Sustainable Construction of Management

International Journal of Urban Design and Development (IJUDD)



Subscription Rate

Print 3500/- Online 6500/-
Print + Online 7315/-

eISSN: 2584-0568, Starting Year 2023

International Journal of Urban Design and Development is a peer-reviewed hybrid open-access journal launched in 2023 that covers a wide range of topics including urban nature and city design, urban design methods and techniques, and various other fields that are related to urban design. The journal aims to create break free communication link between the research communities.

Journal DOI no.: 10.37591/IJUDD

Indexed in: Scientific Literature (SCILIT), Google Scholar

Issues Per Year (Frequency): 2 Issues (Jan-June, July-Dec)

Focus and Scope

- Urban Design Theory and Methodology
- Urban Morphology and Typology
- Urban Design Principles and Processes
- Public Space Design and Activation
- Urban Regeneration and Revitalization
- Sustainable Urban Infrastructure
- Urban Governance and Policy

International Journal of Environmental Planning and Development Architecture (IJEPA)



Subscription Rate

Print 3500/- Online 6500/-
Print + Online 7315/-

eISSN: 2584-1688, Starting Year 2023

International Journal of Environmental Planning and Development Architecture is a peer-reviewed hybrid open-access journal launched in 2023 that focuses on all major issues related to environmental planning and development including environmental economics and legislation, its challenges, design, and risk assessment. The scope also covers other issues from environmental eco-sufficiency and related fields.

Journal DOI no.: 10.37591/IJEPA

Indexed in: Scientific Literature (SCILIT), Google Scholar

Issues Per Year (Frequency): 2 Issues (Jan-June, July-Dec)

Focus and Scope

- Environmental Planning
- Land Use Planning and Management
- Environmental Impact Assessment and Mitigation
- Climate Change Adaptation and Resilience Planning
- Development Architecture
- Green Building Technologies and Materials





Subscription Rate

Print 3500/- Online 6500/-
Print + Online 7315/-

eISSN: 3048-6378, Starting Year 2023

International Journal of Rural and Regional Development is a peer-reviewed hybrid open-access journal launched in 2023 covers advances in the field of architectural planning, and strategies of planned development and covers a wide range of topics that are directly and indirectly influenced by the planning strategies. Journal publishes only peer-reviewed articles that are of high quality and also publishes review articles that are comprehensive and contemporary.

Journal DOI no.: 10.37591/IJRRD

Indexed in: Scientific Literature (SCILIT), Google Scholar

Issues Per Year (Frequency): 2 Issues (Jan-June, July-Dec)

Focus and Scope

- Rural Development Strategies
- Regional Development Planning
- Community Development
- Agricultural Development
- Rural-Urban Linkages
- Natural Resource Management
- Infrastructure Development
- Entrepreneurship and Innovation
- Social and Cultural Development
- Policy Analysis and Evaluation



STM Journals,

An imprint of Consortium E-learning network Pvt. Ltd.
A-118, 1st Floor, Sector-63, Noida, U.P. India, Pin-201301
(Tel) (+91) 0120- 4781 206,
(Mob) (+91) 8130806555, (+91) 98100 78958
E-mail: info@stmjournals.com

Please find our Banking details for making NEFT / RTGS:

Account Number : **03942000001153**

Account Name : **Consortium eLearning Network Pvt. Ltd.**

Bank Name : **HDFC**

Bank Location : **HDFC Bank, Sector-62, NOIDA, U.P. India**

IFSC Code : **HDFC0002649, Swift Code : HDFCINBBXXX**

