

# Transforming Road Safety: A GPS Enhanced Car Accident Alert System for Rapid Emergency Response

Vaishnavi Desai<sup>1</sup>, Shravani Dhamale<sup>2</sup>, Divya Hinge<sup>3</sup>, Shilpa Dhanorkar<sup>4,\*</sup>

## Abstract

Road accidents continue to be a major global health concern, with consequences for both emergency response times and public safety. The “Transforming Road Safety: A GPS Enhanced Car Accident Alert System for Rapid Emergency Response” that this project suggests would help emergency services respond to car accidents more quickly and efficiently. In this review article, we investigate a system that uses sensors and GPS to enhance road safety and accident response. Consider a system that, in the event of a car accident, can instantly notify emergency services. That's what our focus is. Although the concept of auto accident detection is not new, the automotive sector has made great technological strides in this area. This study aims to advance this field of technology. Here, we attempt to detect accidents using an accelerometer vibration sensor and an ultrasonic sensor; a device that helps determine the position of the car. If the  $x$ ,  $y$ , and  $z$  parameter values exceed predefined thresholds, a warning is generated. Our code is activated in this situation to notify emergency services and the driver's family member via SMS alerts. This approach facilitates the process of locating an accident. If the system notices a substantial impact, it notifies emergency personnel via GPS of the accident's location. By providing a reliable, automated, and effective way to save lives and lessen the severity of accidents, it promises to completely alter road safety.

**Keywords:** Regulated power supply, vibration sensor, ADXL 345 [accelerometer], ultrasonic sensor, GPS, GSM, smart phone, PIC microcontroller

## INTRODUCTION

*Transforming road safety:* A GPS Enhanced Car Accident Alert System for Rapid Emergency Response. This innovative system represents a significant leap forward in enhancing road safety and providing critical real-time assistance to motorists in the event of accidents or emergencies. The roads we travel on can be unpredictable, and accidents can happen in the blink of an eye, often leaving individuals in distress and in need of immediate aid. The main goal of this article is to aid streamline the emergency response process to preserve lives and lessen the severity of injuries, as well as to

### \*Author for Correspondence

Shilpa Dhanorkar  
E-mail: [shilpa.dhanorkar.rmdssoe@singhad.edu](mailto:shilpa.dhanorkar.rmdssoe@singhad.edu)

<sup>1,2,3</sup>Student, Department of Electronics and Telecommunication Engineering, Rasiklal M. Dhariwal Sinhgad School of Engineering, Warje, Pune, Maharashtra, India

<sup>4</sup>Assistant Professor, Department of Electronics and Telecommunication Engineering, Rasiklal M. Dhariwal Sinhgad School of Engineering, Warje, Pune, Maharashtra, India

Received Date: June 28, 2024

Accepted Date: July 17, 2024

Published Date: July 30, 2024

**Citation:** Vaishnavi Desai, Shravani Dhamale, Divya Hinge, Shilpa Dhanorkar. Transforming Road Safety: A GPS Enhanced Car Accident Alert System for Rapid Emergency Response. *Current Trends in Signal Processing*. 2024; 14(2): 16–21p.

minimize reaction times to accidents. The global automotive sector has made significant production improvements in the past few years. As technology advances, more cars are being produced, which might be interpreted as a simultaneous increase in the number of accidents. There is a great risk to people's lives from traffic accidents. This is a result of the inadequate emergency facilities in our nation. This article proposes an automated detection and alerting system for automobile accidents. This system helps in detecting accidents in a very little period, basically within a few seconds, sending the basic information to the first aid center in a message including the time and location of the accident. The alert message helps in locating the location so that the medical services can be provided on time and

this way precious lives can be saved. If in case, there is no casualty and assistance is not required then you can terminate message sending process using the switch provided in the device. The GPS module is used to determine the accident's position while the GSM module transmits the message. The accelerometer sensor aids in the accurate detection of the accident [1–5].

The angle of the car's rolls over can also be known through the accelerometer via the message. The best possible answer to the subpar emergency facilities offered for traffic accidents is offered by this application in the most practical manner.

Traffic accidents are still a major global problem because they carry a high risk to both human life and property. Rapid reaction and timely intervention are essential for reducing the effects of these kinds of events. This project presents a "*Transforming Road Safety: A GPS Enhanced Car Accident Alert System for Rapid Emergency Response*," which aims to improve emergency response times after car crashes in terms of both efficacy and efficiency. The widespread use of GPS technology and its incorporation into contemporary automobiles offer a special chance to transform emergency response systems. The suggested system seeks to automatically detect and report collisions by utilizing onboard sensors and GPS modules. This could lessen the severity of injuries and fatalities and possibly speed up reaction times.

The "*Transforming Road Safety: A GPS Enhanced Car Accident Alert System for Rapid Emergency Response*" is a noteworthy development in the application of GPS technology to improve road safety features. The system's goal is to improve public safety and reduce the negative effects of traffic accidents on people and communities by accelerating emergency response times and enabling accurate location-based assistance.

### Literature Survey

1. To overcome the shortcomings in car safety systems, Aboli Ravindra Wakure et al. [6] developed a system that combines GPS and accelerometer sensors. The focus of their research is on using accelerometer sensors to identify vibrations in cars, which may be signs of risky driving practices. When used in conjunction with GPS, this system pinpoints the car's location with accuracy, improving the capacity to identify and quickly address possible threats. Their research indicates that the installation of a system like this can boost safety by over 70% and contribute to a noticeable increase in safety. The study recognizes that adding these systems could raise the price of the car, but it also emphasizes how crucial it is to improve safety features regardless of the expenses involved, giving even slight safety gains priority over none.
2. Using accelerometers and GPS technologies, Purva Javale et al. [7] suggested an early accident detection system. Using accelerometers embedded in the vehicles, the system autonomously detects traffic incidents and quickly sends vital data, including GPS locations and vehicle identifying numbers, to a central emergency dispatch server. Rapid data transmission guarantees that emergency responders obtain critical information quickly, allowing them to take prompt, well-informed action. The authors underline how crucial it is to shorten the interval between an accident happening and being discovered, emphasizing that doing so might dramatically cut the death rates connected to traffic accidents. Their study emphasizes how crucial it is to combine real-time data transmission with sophisticated sensor technology to improve emergency response efficiency and overall road safety results.
3. Tanushree Dalai et al. [8] presented a solution aimed at addressing similar challenges through the integration of advanced communication technologies. Their system comprises a microcontroller unit, GPS receiver, GSM module, CAN transceiver, and an Alcohol Sensor. The primary objective is to efficiently capture the vehicle's location using the GPS receiver and transmit this information to the vehicle owner's mobile number via SMS, as well as to a telematics operator server through GPRS. This integrated approach not only enhances real-time tracking capabilities but also reduces infrastructure costs associated with vehicle monitoring systems. The system operates autonomously, capable of sending alert SMS messages and communicating seamlessly with the server via GPRS for continuous vehicle tracking. The research underscores the efficacy

of leveraging robust communication technologies to improve monitoring and safety measures while optimizing operational expenses.

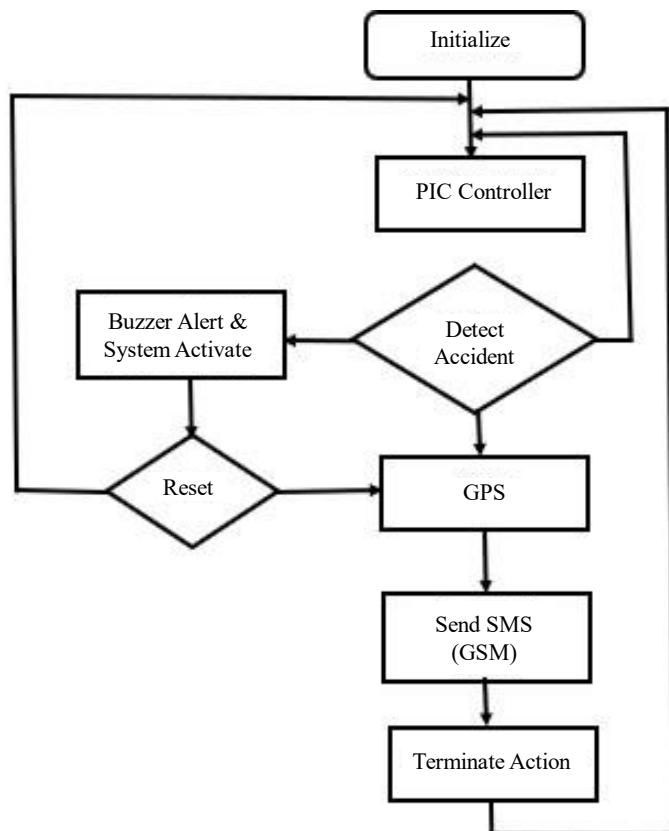
4. In their article, Manuel Fogue et al. [9] presented the e-NOTIFY system, which is intended to improve emergency response effectiveness by quickly identifying traffic incidents. Utilizing a combination of Vehicle-to-Vehicle (V2V) and Vehicle-to-Infrastructure (V2I) connections, the system accomplishes this. It makes it easier for emergency personnel to receive vital accident information quickly, which improves help for passengers who are hurt. The e-NOTIFY system seeks to maximize emergency response efforts and lessen the effects of traffic accidents by cutting response times through effective communication of pertinent accident facts, such as location and severity. The study emphasizes the significance of incorporating cutting-edge communication technology to augment safety and responsiveness in transportation networks.
5. Chinmay Patil et al. [10] present the design and implementation of a gesture-controlled robot with an integrated robotic car in a simple and efficient manner. A robot is a mechanical device capable of performing physical tasks. The goal of this project was to develop both the hardware and software for a gesture-controlled robotic car and a joystick-controlled arm, and this objective has been successfully achieved.
6. Mounika Jammula [4] suggests that implementing in-vehicle automatic accident detection and notification systems can help reduce the delay between an accident occurring and the dispatch of first responders. Additionally, tracking vehicles in the event of theft has become increasingly difficult. This system is designed to inform the vehicle occupant's loved ones about an accident, ensuring prompt medical assistance.

## METHODOLOGY

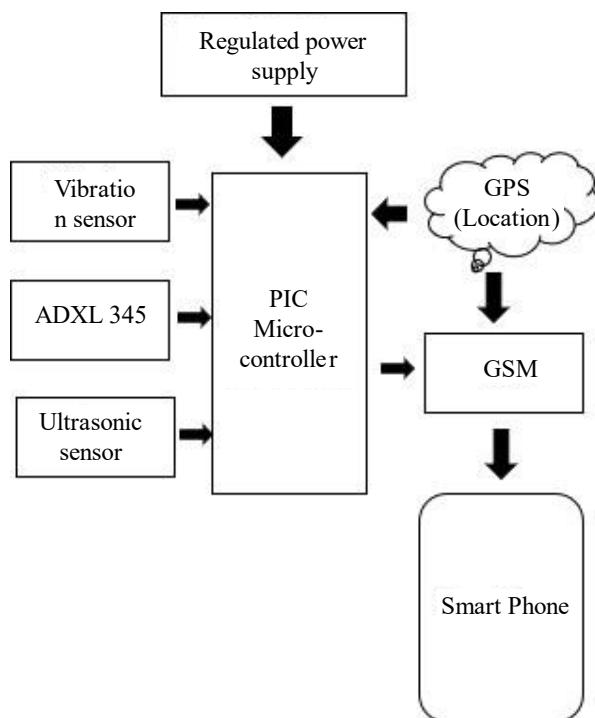
To develop a “*Transforming Road Safety: A GPS Enhanced Car Accident Alert System for Rapid Emergency Response*,” the project methodology would involve several key steps. First, the system continuously monitors the vehicle’s surroundings using an ultrasonic sensor to detect nearby objects and assess the risk of collision. Simultaneously, an accelerometer and vibration sensor track the vehicle’s motion and detect sudden changes indicative of a collision or impact. On detecting a potential accident, the system initiates a series of actions, including confirming the accident using data from multiple sensors, activating the GPS module to determine the vehicle’s precise location, and transmitting an alert message via communication modules to emergency services and designated contacts. Next, we would design and prototype the system, integrating GPS technology with accident detection algorithms. After then, thorough testing and improvement would be done to guarantee precision and dependability. Ultimately, the system’s performance and user experience would be continuously enhanced through deployment and continuous monitoring. Through this methodology, the system provides a robust and efficient solution for enhancing road safety and emergency response capabilities.

## FLOWCHART

The flowchart of the proposed system is shown in Figure 1. To improve vehicle safety and emergency response capabilities, the “*Transforming Road Safety: A GPS Enhanced Car Accident Alert System for Rapid Emergency Response*” integrates cutting-edge technology components such as a PIC microcontroller, ADXL345 accelerometer, vibration sensor, ultrasonic sensor, GSM module, smartphone interface, and regulated power supply. The system starts by using the ADXL345 accelerometer to continuously monitor the dynamics of the vehicle. Collision detection techniques are then used to identify abrupt hits. When a collision is detected, the ultrasonic sensor determines the closeness to barriers, and the vibration sensor verifies the force of impact. Simultaneously, the GPS module obtains precise location information, which is essential for producing accurate emergency notifications. The technology sends these notifications, along with GPS locations, to emergency services via the GSM module, allowing for quick reaction times. Notifications verifying the transmission of the warning are delivered to the user’s smartphone simultaneously. This all-encompassing strategy guarantees prompt and efficient emergency response, which may lessen the severity of collisions and enhance general traffic safety.



**Figure 1.** Flow chart of the proposed system.



**Figure 2.** Block diagram of the proposed system.

**BLOCK DIAGRAM AND RESULT**

The block diagram of the proposed system is shown in Figure 2. The functions of each block are mentioned below:

### **Vehicle Dynamics (ADXL345)**

- Monitors vehicle acceleration and orientation using the ADXL345 accelerometer.

### **PIC Microcontroller**

- Central processing unit that analyzes accelerometer data for collision detection algorithms and manages system operations.

### **Vibration Sensor**

- Activates post-collision to assess impact severity, providing additional data for emergency response assessment.

### **GSM Module**

- Communicates with the emergency response center, transmitting emergency alerts containing GPS coordinates and impact severity.

### **Smartphone Interface**

- Notifies the vehicle occupants via smartphone application about the accident alert status and coordinates.

### **Ultrasonic Sensor**

- Measures distances to nearby objects, ensuring the collision aftermath and assessing surrounding obstacles.

### **Regulated Power Supply**

- Supplies stable power to all components of the system to ensure continuous operation and reliability.

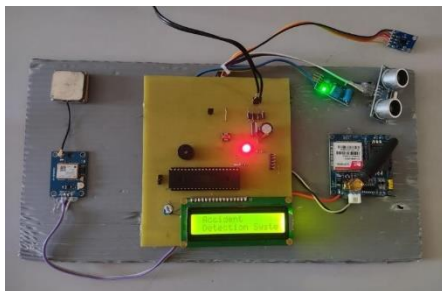
### **Emergency Response Centre**

- Receives and processes emergency alerts from the GSM module, dispatching appropriate emergency services based on received data.

This block diagram illustrates the interconnected components of the “*Transforming Road Safety: A GPS Enhanced Car Accident Alert System for Rapid Emergency Response*” highlighting their roles in detecting accidents, assessing impact severity, communicating alerts, and coordinating emergency response efforts. Each block represents a critical component contributing to the system’s overall functionality and effectiveness in enhancing vehicle safety and emergency response capabilities. Changes and additions can be made in response to new technological developments and system requirements.

## **RESULT**

Figure 3 shows the final hardware model of *Transforming Road Safety: A GPS Enhanced Car Accident Alert System for Rapid Emergency Response*.



**Figure 3.** Result of the proposed system.

---

## CONCLUSION

The “*Transforming Road Safety: A GPS Enhanced Car Accident Alert System for Rapid Emergency Response*” project successfully demonstrated the feasibility of using PIC microcontrollers and GPS technology to create a potentially life-saving system. The project addressed an important societal issue by enhancing road safety and providing rapid response in the event of accidents. This technology could save lives and speed up emergency response times.

The project team gained valuable experience in microcontroller-based system design, embedded systems, and wireless communication technologies.

## REFERENCES

1. Agrawal NK, Singh VK, Parmar VS, Sharma VK, Singh D, Agrawal M. Design and development of IoT-based robotic arm by using Arduino. In: 2020 Fourth International Conference on Computing Methodologies and Communication (ICCMC); 2020 Mar 11–13; Erode, Tamil Nadu, India: IEEE; 2020. 776–780 p.
2. Amin MS, Jalil J, Reaz MB. Accident detection and reporting system using GPS, GPRS and GSM technology. In: 2012 International Conference on Informatics, Electronics & Vision (ICIEV); 2012 May 18–19; Dhaka, Bangladesh: IEEE; 2012. 640–643 p.
3. Amin MS, Bhuiyan MA, Reaz MB, Nasir SS. GPS and map matching based vehicle accident detection system. In: 2013 IEEE Student Conference on Research and Development (SCORED); 2013 Dec 16–17; Putrajaya, Malaysia: IEEE; 2013. 520–523 p.
4. Mounika J, Charanjit N, Saitharun B, Vashista B. Accident alert and vehicle tracking system using GPS and GSM. *Asian J Appl Sci Technol.* 2021; 5: 81–89.
5. Ali HM, Alwan ZS. Car accident detection and notification system using smartphone. Saarbrücken, Germany: LAP Lambert Academic Publishing; 2017.
6. Wakure AR, Patkar AR, Dagale MV, Solanki PP. Vehicle accident detection and reporting system using GPS and GSM. *Int J Eng Res Dev.* 2014; 10 (4): 25–28.
7. Javale P, Gadgil S, Bhargave C, Kharwandikar Y, Nandedkar V. Accident detection and surveillance system using wireless technologies. *IOSR J Comput Eng.* 2014; 16 (2): 38–43.
8. Dalai T. Emergency alert and service for automotives for India. *Int J Adv Trends Comput Sci Eng.* 2013; 2 (5): 8–12.
9. Fogue M, Garrido P, Martinez FJ, Cano JC, Calafate CT, Manzoni P. Automatic accident detection: Assistance through communication technologies and vehicles. *IEEE Veh Technol Mag.* 2012; 7 (3): 90–100.
10. Patil C, Sharma S, Singh S. Design and implementation of gesture-controlled robot with a robotic arm. *Int Res J Eng Technol.* 2019; 6 (9): 1373–1378.