

FertileData: Advanced Strategies for Crop Optimization Through Machine Learning Processing

Ramaraj S.^{1,*}, Sanjay K.², Haris Nisanthan M.², Vikash Kannan B.², Linges G.²

Abstract

The venture, titled "FertileData: Advanced Strategies for Crop Optimization Through Machine Learning processing" is created utilizing HTML, CSS, and JavaScript for the front conclusion, and Python for the back conclusion. In a nation like India, where a noteworthy parcel of the populace depends on agribusiness for their vocation, joining progressed advances such as Machine Learning and Profound Learning into cultivating hones can revolutionize the industry. This venture presents a user-friendly site planned to help agriculturists in making educated choices through two key instruments: Trim Proposal and Fertilizer Proposal. The Trim Suggestion device makes a difference. Agriculturists recognize the most reasonable crops for their soil and natural conditions, guaranteeing ideal utility of their arrival and maximizing abdication. In the meantime, the Fertilizer Proposal apparatus gives experiences into the particular supplements required by the soil for their chosen crops, empowering productive fertilizer utilization and minimizing squander. By leveraging progressed AI innovation, the stage advances maintainability, asset productivity, and natural preservation, making advanced cultivating available indeed to those with constrained mechanical involvement. This activity points to engaging ranchers and drives a more feasible and beneficial future in horticulture.

Keywords: Crop optimization, machine learning, python, agriculture, crop and fertilizer recommendation, AI, sustainability, resource efficiency, farmers, precision farming

INTRODUCTION

"FertileData: Advanced Techniques for Crop Optimization Through Machine Learning Training" is an innovative initiative aimed at transforming agriculture through cutting-edge machine learning technologies. This web-based platform features two core modules — Crop Recommendation and Fertilizer Suggestion — designed to empower farmers with data-driven insights to enhance productivity while promoting sustainable farming practices. The Trim Proposal module guides ranchers in selecting the most reasonable crops for their soil and natural conditions, optimizing asset utilization and

maximizing yields. In the meantime, the Fertilizer Suggestion module analyzes soil information to give exact, custom-made recommendations for supplement administration, making a difference, agriculturists minimize fertilizer squander and diminish natural impact. With its instinctive and available interface, the stage is planned for agriculturists of all specialized foundations, making cutting-edge AI advances effortlessly accessible. By advancing exactness, cultivating and asset optimization, the venture looks for constructing a versatile rural community that values maintainability and natural stewardship. Through this comprehensive approach, the "Trim Expectation and Fertilizer Proposal Utilizing Machine Learning" envisions a future where

*Author for Correspondence

Ramaraj S.
E-mail: raj.rama7@gmail.com

¹Assistant Professor, Department of Computer Science and Engineering, Karpagam College of Engineering, Myleripalayam, Coimbatore, Tamil Nadu, India

²Research Scholar, Department of Computer Science and Engineering, Karpagam College of Engineering, Myleripalayam, Coimbatore, Tamil Nadu, India

Received Date: April 02, 2025

Accepted Date: May 01, 2025

Published Date: May 11, 2025

Citation: Ramaraj S., Sanjay K., Haris Nisanthan M., Vikash Kannan B., Linges G. FertileData: Advanced Strategies for Crop Optimization Through Machine Learning Processing. Research & Reviews: Journal of Crop Science & Technology. 2025; 14(2): 26–35p.

horticulture guarantees nourishment security, financial development, and environmental adjustment, clearing the way for feasible cultivating hones for eras to come.

PROBLEM STATEMENT

Horticulture shapes the spine of the Indian economy, with an expansive portion of the populace depending on cultivating for their vocation. In any case, conventional rural hones confront a few challenges, counting wasteful trim determination, dishonorable fertilizer utilization, and unsustainable asset administration. These challenges result in moo efficiency, asset wastage, natural corruption, and a noteworthy effect on farmers' livelihoods and the by and large maintainability of agriculture. One of the essential deterrents for agriculturists is the need of get to progressed instruments and data-driven bits of knowledge that can help in making educated choices, approximately edit and fertilizer choices. This gap often results in inefficient land use, reduced crop yields, and the overuse or misuse of fertilizers, which can negatively impact soil health and the environment. Besides, the fast pace of innovative headway has extended the advanced isolation, clearing out numerous ranchers incapable to embrace cutting edge arrangements due to restricted specialized information or the nonappearance of user-friendly platforms.

To overcome these challenges, there is a requirement for an inventive arrangement that coordinates progressed innovations such as Machine Learning and Profound Learning with a basic, instinctive interface. Such a framework would enable agriculturists with significant experiences to optimize edit choice and fertilizer application. By promoting sustainability, resource efficiency, and environmental conservation, this solution aims to bridge the technological gap and empower farmers to adopt modern, data-driven farming practices, paving the way for a more sustainable and productive agricultural future.

LITERATURE SURVEY

The ponder by Hossein *et al.* presents a Choice Back Framework (DSS) planned to identify weeds in pastures and help in administration choices. DSS employments inputs like weed thickness and uncovered patches to calculate abdicate scores for field ranges. By joining different information sources and utilizing progressed explanatory strategies, the framework points to make strides weed management practices in agriculture [1].

The research by Swaminathan *et al.* presents a profound collaborative sifting demonstrate for deciding ideal fertilizer sums for feasible trim development. The show addresses information sparsity by consolidating extra highlights like soil fertilizer levels, agricultural land assessment, and soil chemical properties. Combining wide framework factorization and a multi-layer perceptron, the strategy captures both straight and non-linear intuitive between agricultural land assessment and supplements. Comes about from real-world datasets proves more effective than newer approaches, helping ranchers in exact fertilizer application to boost edit yield [2].

The paper by Bhat *et al.* proposes a half breed demonstrate coordination Slope Boosting Relapse Trees (GBRT) and Profound Neural Systems (DNN) to classify soil reasonableness for trim determination. By leveraging the qualities of both strategies, the demonstration accomplishes moved forward classification precision. Exploratory comes about illustrating its adequacy over conventional models, advertising a reliable apparatus for agriculturists to assess soil appropriateness and make educated trim decisions [3].

The think about by Nti *et al.* creates prescient analytics demonstrate utilizing tree-based Outfit Procedures (ET) to assess trim appropriateness and efficiency. By consolidating natural and soil information, the demonstration predicts ideal editors for particular districts. The tree-based ET approach progresses expectation exactness, serving as an important apparatus for rural partners to optimize edit determination and upgrade productivity [4].

EXISTING SYSTEM

The existing framework transcendentally depends on conventional cultivating hones, where ranchers depend on individual involvement and nearby information to make choices with respect to trim determination, fertilizer application, and infection administration. Whereas important, this approach frequently falls brief of conveying ideal comes about. Ranchers may battle to recognize the most reasonable crops or oversee supplements viably, driving to wasteful aspects and missed openings for advancement. The nonappearance of data-driven experiences and progressed advances hampers agrarian efficiency and limits the potential for maintainable cultivating practices [5–7].

METHODOLOGY

The essential objective of the proposed framework is to help agriculturists in selecting the most appropriate crops to accomplish superior yields. The edit determination prepares centers on key crops important to areas [8]. The framework takes after a coordinated approach with three successive steps:

- Step 1: Edit Suggestion,
- Step 2: Fertilizer Suggestion, and
- Step 3: Plant Infection Prediction (Figure 1).

Crop Recommendation

To prescribe the most reasonable crops, the framework starts by collecting and preprocessing information. The information is normalized, and lost values are supplanted with inhumanity. A few machine learning models are at that point utilized, counting Irregular Timberland Classifier, Choice Tree, Naïve Bayes Classifier, SVM Classifier, and XGBoost to construct the forecast demonstrate. Based on the number of classes, the results are partitioned into relapses and classification yields. The precision of the estimate makes strides with the number of trees utilized in the irregular forest (Figure 2) [9, 10].

For preparing, 80% of the information is utilized, whereas the remaining 20% serves as the test set. The demonstration is prepared on a dataset that incorporates 22 target crops, such as rice, maize, chickpea, kidney beans, pigeon peas, moth beans, mung beans, black gram, lentil, pomegranate, banana, mango, grapes, watermelon, muskmelon, orange, papaya, coconut, cotton, jute, and coffee (Table 1).

The model is prepared using eight features: Nitrogen, Phosphorus, Potassium, Temperature, Humidity, pH, Precipitation, and Crop Name (representing the crop to be predicted or classified) (Figure 3).

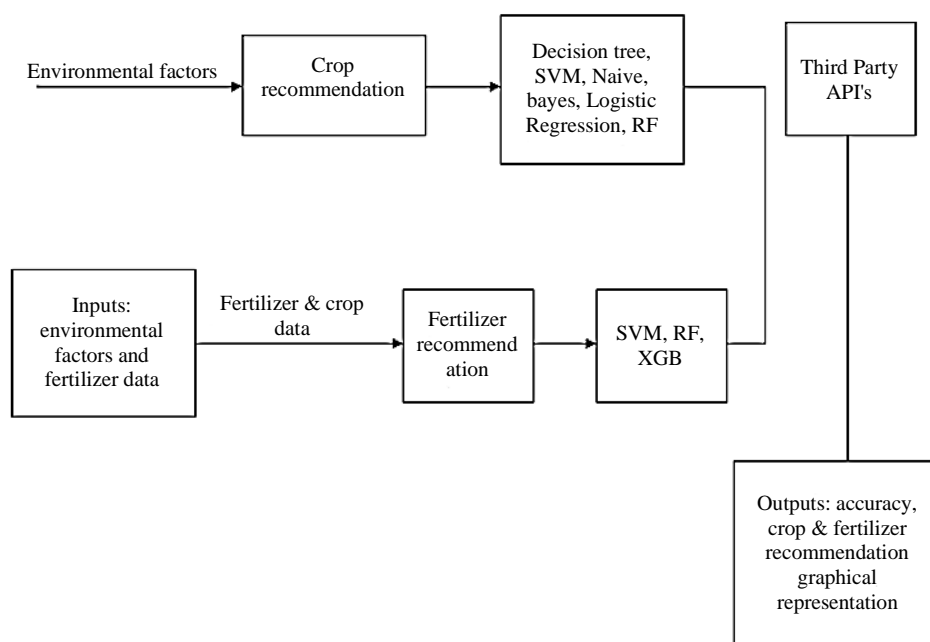


Figure 1. Working process flow.

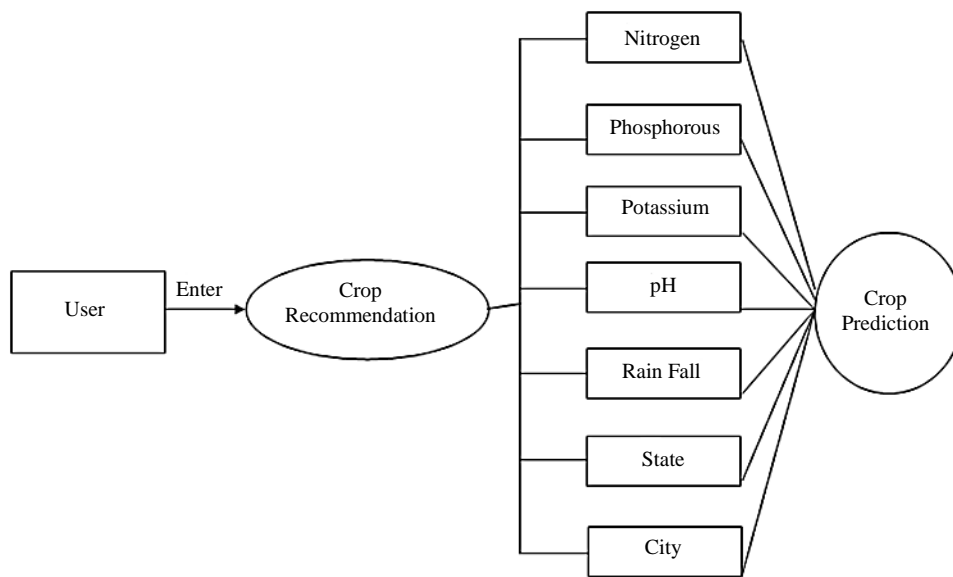


Figure 2. Crop recoomendation.

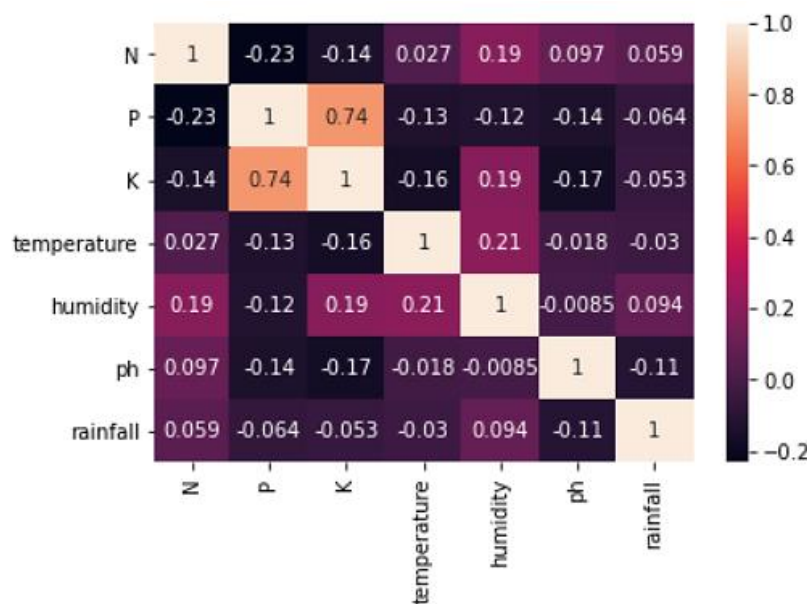


Figure 3. Heatmap of features.

Table 1. Description of crop recoomedation.

S.N.	Description	Count
1	Total instances	2200
2	Total features	8
3	Target classes	22

Fertilizer Recommendation

The fertilizer proposal framework is planned to assess the dietary substance of soil and propose the fitting fertilizers to upgrade trim abdicate. Deficiency of nitrogen in the soil can lead to destitute edit execution, whereas over the top utilize of fertilizers can lead to soil defilement. To suggest the right fertilizer, the framework depends on fertilizer information that incorporates the NPK (Nitrogen, Phosphorus, Potassium) proportion and the title of the chosen crop (Figure 4) [11]. The framework suggests the particular sort of fertilizer for a given trim and calculates the ideal sum required. After

collecting and preprocessing the information, machine learning algorithms, similar to those utilized in the Trim Proposal module, are connected to decide the essential fertilizer amount. These calculations offer to assist classify the best fertilizer choices for each edit, guaranteeing exact suggestions for progressed abdication and asset efficiency (Figure 5) [12, 13].

PROPOSED SYSTEM

The proposed framework looks for to address the inadequacies of conventional cultivating hones by presenting a comprehensive web stage including Trim Proposal and Fertilizer Suggestion devices. Utilizing progressed machine learning advances, the stage gives ranchers with important, data-driven experiences to direct choices on trim determination and supplement administration. This move to accuracy cultivating optimizes asset utilization, boosts agrarian efficiency, and minimizes natural effect. By embracing this imaginative approach, the framework advances a feasible and productive cultivating demonstrate, viably handling the challenges of the existing framework (Figure 6) [14].

RESULT AND DISCUSSION

Our tests pointed to assess the system's adequacy, productivity, and exactness in giving ranchers with customized proposals. To accomplish this, we accumulated a broad dataset covering different perspectives of agribusiness. The edit information included points of interest such as edit sort, development organize, abdicate history, and soil characteristics, with a wide assortment of crops like wheat, rice, maize, and soybeans spoken to. Soil information was collected from different agrarian districts, with tests analyzed for characteristics such as pH levels, natural matter substance, and supplement substance, counting nitrogen, phosphorus, and potassium (Figure 7).

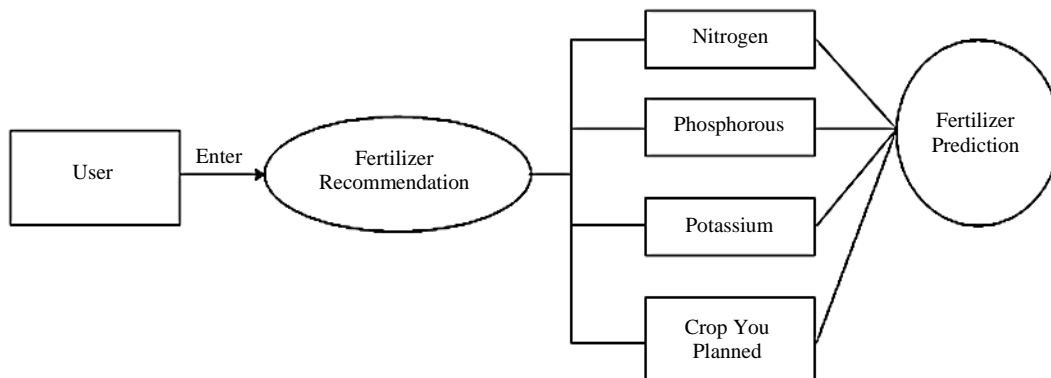


Figure 4. Fertilizer recommendation.

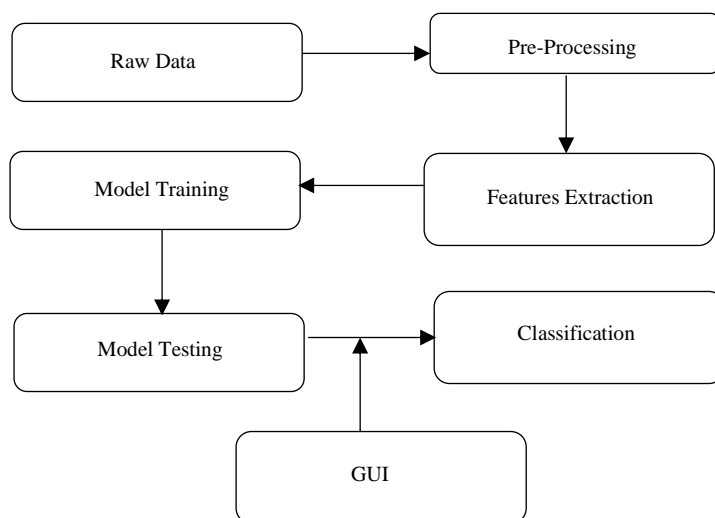


Figure 5. Flow chart of methodology.

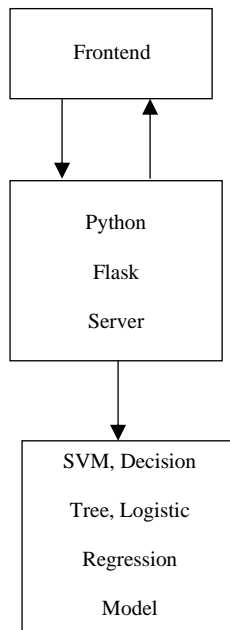


Figure 6. System architecture.

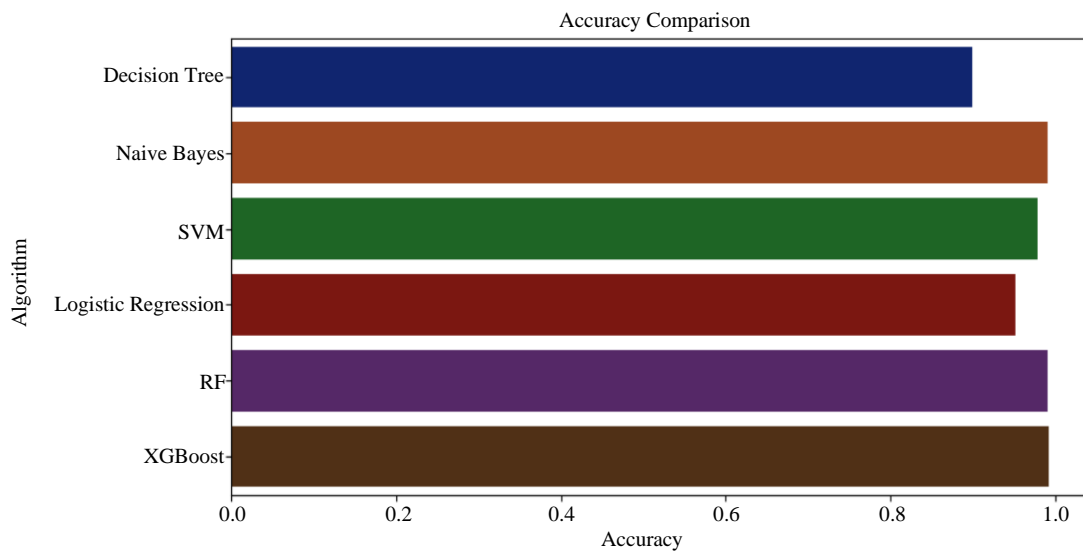


Figure 7. Accuracy comparison of algorithm.

The dataset enveloped distinctive soil sorts, counting sandy, soil, and clay. Climate data was sourced from neighborhood meteorological stations, giving chronicled information on temperature, precipitation, mugginess, and sun based radiation, which were pivotal for understanding climatic conditions amid edit development periods (Figure 8).

Also, manure information was collected, enumerating different compositions, supplement substance, and prescribed application rates, sourced from agrarian expansion workplaces and distributed writing (Figures 9 and 10).

The information collection strategy included the utilize of sensors and the procurement of significant datasets, which were basic for setting up the tests. Key highlights such as edit sort, development arrange, soil sort, and supplement levels were extricated from the edit and soil datasets, shaping the input factors for the proposed models (Figures 11 and 12).



Figure 8. Home page.

Find out the most suitable crop to grow in your farm

Nitrogen:

Phosphorus:

Potassium:

pH level:

Rainfall (in mm):

State:

City:

Figure 9. Crop recommendation details.

Table 2. Crop predict.

Field	Data type	Width	Description
N	int	15	Nitrogen level in soil
P	int	15	Phosphorous level in soil
K	int	15	Potassium level in soil
PH	int	25	pH value of soil
RF	int	25	Rainfall value in mm
State	int	25	Location
City	int	25	Area

To capture the transient flow of the rural framework, time-related variables, counting planting date and climate conditions amid the crop's development period, were calculated. Furthermore, geospatial highlights such as geographic arranges and arrive characteristics were considered to account for location-specific varieties in edit execution (Tables 2 and 3).

Figure 10. Fertilizer recommendation details.

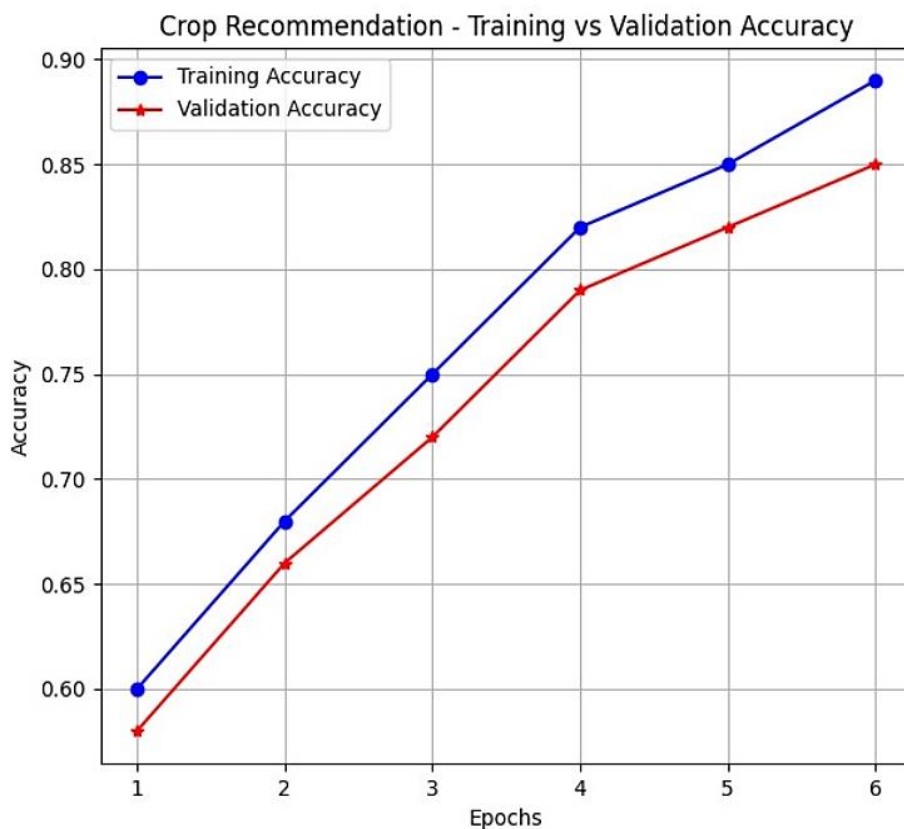


Figure 11. Crop recommendation accuracy.

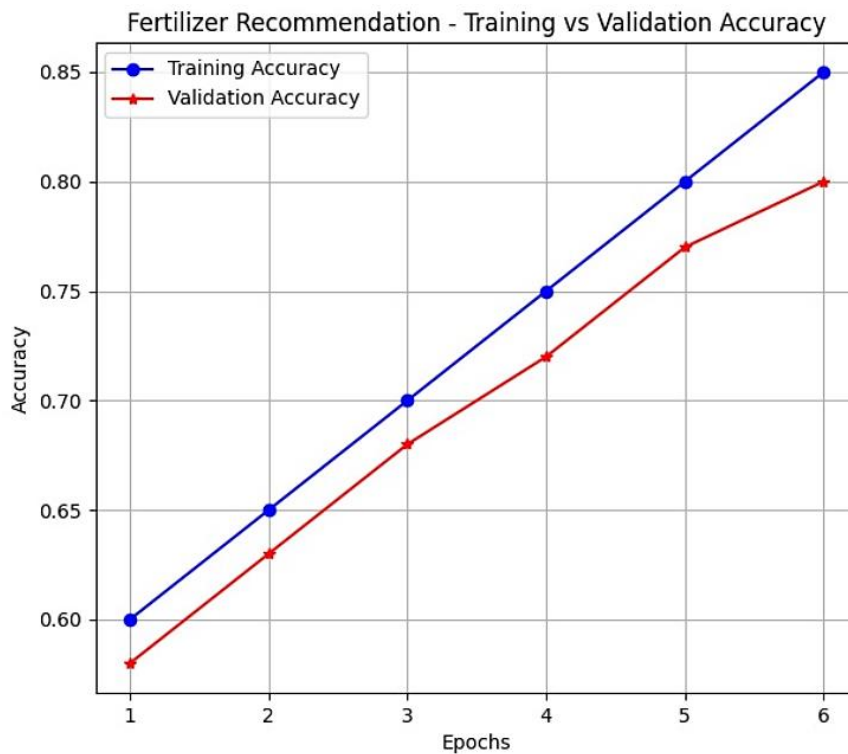


Figure 12. Fertilizer recommendation accuracy.

Table 3. Fertilizer recommendation.

Field name	Data type	Width	Description
N	int	15	Nitrogen level in soil
P	int	15	Phosphorous level in soil
K	int	15	Potassium level in soil
Crop	Varchar	25	Crop you want to grow

CONCLUSION

In conclusion, this venture presents an imaginative web stage outlined to engage ranchers with progressed advances and noteworthy, data-driven experiences. By consolidating Trim Proposal and Fertilizer Suggestion apparatuses, the stage makes a difference agriculturists optimize, edit choice and asset administration, improving rural efficiency whereas advancing sustainability. By cultivating effective cultivating hones, decreasing natural affect, and driving financial development, this extend envisions a future where agribusiness is both feasible and affluent. It points to secure nourishment generation for future eras whereas changing conventional cultivating into a more versatile, proficient, and eco-friendly endeavor. This activity marks a noteworthy step toward a modern time of accuracy agribusiness, guaranteeing an adjust between efficiency and natural stewardship.

Future Scope

The venture offers gigantic potential for future development, with the expansion of a Abdicate Forecast module speaking to a critical step forward. This improvement would center on creating a data-driven application competent of determining edit yields for up and coming seasons. By analyzing authentic edit execution, climate designs, soil characteristics, and crop-specific characteristics, this module would empower agriculturists to make proactive choices, distribute assets effectively, and way better arrange their cultivating activities. The Surrender Forecast module would consistently coordinate with the existing Edit Suggestion and Fertilizer Proposal apparatuses, making a bound together stage for exactness cultivating. Exact surrender figures would enable agriculturists to make educated choices approximately edit choice, decide ideal planting plans, and refine their hones to upgrade efficiency and

profitability. To actualize this module successfully, a comprehensive database containing chronicled trim yields, climate information, and soil data is fundamental. Progressed machine learning calculations and measurable models would be utilized to analyze these datasets and create dependable abdicate predictions. Incorporating the Surrender Forecast module would encourage raise the scope of the "Economical Accuracy Cultivating Procedures Utilizing Profound Learning" extend, giving ranchers with basic bits of knowledge to maximize yields, diminish instabilities, and cultivate a strong rural division. As innovation proceeds to progress, this venture has the potential to revolutionize cultivating hones, driving economic development and guaranteeing nourishment security for eras to come. A deep neural network-based collaborative filtering model for fertilizer recommendation.

REFERENCES

1. Chegini Hossein, et al. An Agriprecision Decision Support System for Weed Management in Pastures. *IEEE Access*. 2023; 11: 92660–92675.
2. Swaminathan, et al. Feature fusion based Deep Neural Collaborative Filtering Model for Fertilizer Prediction. *Expert Syst Appl*. 2023; 216: 119441.
3. Bhat, et al. Soil suitability classification for crop selection in precision agriculture using GBRT-Based Hybrid DNN Surrogate Models. *Ecol Inform*. 2023; 75: 102109.
4. Nti, et al. A Predictive Analytics Model for Crop Suitability and Productivity Using Tree-Based ensemble learning. *Decis Anal J*. 2023; 8: 100311.
5. Sharp Jeff S, Smith Molly B. Social capital and farming at the rural–urban interface: the importance of nonfarmer and farmer relations. *Agric Syst*. 2003; 76(3): 913–927.
6. Shah Farooq, Wei Wu. Soil and crop management strategies to ensure higher crop productivity within sustainable environments. *Sustainability*. 2019; 11(5): 1485.
7. Priyadharshini A, et al. Intelligent crop recommendation system using machine learning. 2021 IEEE 5th international conference on computing methodologies and communication (ICCMC). 2021; 843–848.
8. Capraro Flavio, et al. Neural network-based irrigation control for precision agriculture. 2008 IEEE International Conference on Networking, Sensing and Control. 2008; 357–362.
9. Rajak, Rohit Kumar, et al. Crop recommendation system to maximize crop yield using machine learning technique. *Int Res J Eng Technol*. 2017; 4(12): 950–953.
10. Anantha Reddy D, Bhagyashri Dadore, Aarti Watekar. Crop recommendation system to maximize crop yield in Ramtek region using machine learning. *Int J Sci Res Sci Technol*. 2019; 6(1): 485–489.
11. Dighe Deepti, et al. Survey of crop recommendation systems. *Int Res J Eng Technol*. 2018; 5(11): 476–481.
12. Sardogan Melike, Adem Tuncer, Yunus Ozen. Plant leaf disease detection and classification based on CNN with LVQ algorithm. 2018 IEEE 3rd international conference on computer science and engineering (UBMK). 2018; 382–385.
13. Amara J, Bouaziz B, Algergawy A. A deep learning-based approach for banana leaf diseases classification. In *Datenbanksysteme für Business, Technologie und Web (BTW 2017)-Workshopband 2017* (pp. 79-88). Gesellschaft für Informatik eV.
14. Pudumalar S, Ramanujam E, Harine Rajashree R, Kavya C, Kiruthika T, Nisha J. Crop recommendation system for precision agriculture. In 2016 IEEE Eighth International Conference on Advanced Computing (ICoAC). 2017; 32–36.