

# Optimizing the Work Environment for Interior Designers: Enhancing Creativity, Collaboration, and Well-being in Design Studios and Beyond

Vaishnavi Singh<sup>1\*</sup>, Deepti Pande Rana<sup>2</sup>

## Abstract

*In the field of interior design, the conventional office setup is no longer adequate to unleash the full creative potential of designers. This paper advocates for environments that go beyond the basic provisions of a laptop and chair, emphasizing the necessity of spaces that truly ignite creativity. By delving into the unique requirements of interior designers, this research underscores the critical importance of environments that engage the senses and facilitate creative expression. Through in-depth case studies and expert insights, specific strategies are identified to optimize work environments, both within traditional design studios and in unconventional settings, to foster creativity, promote collaboration, and enhance overall well-being. The research highlights the need to reimagine workspaces to better align with the dynamic demands of interior design. It emphasizes that environments should inspire and energize designers rather than constrain their imagination. By understanding and catering to these specific needs, organizations and design studios can tap into the full creative prowess of interior designers, leading to the development of innovative solutions and enhancing professional fulfilment. Drawing from real-world examples and expert opinions, the paper outlines actionable approaches to transform design workspaces. This includes considerations such as spatial layouts that encourage fluid movement and idea generation, integration of natural elements to evoke a sense of tranquillity and connection with nature, and the implementation of collaborative zones to facilitate idea exchange and collective problem-solving. Additionally, the research underscores the significance of incorporating ergonomic furniture and optimizing lighting and acoustics to support physical comfort and mental well-being. Ultimately, the research serves as a call to action for organizations and design studios to rethink traditional work environments and embrace innovative design concepts. By embracing environments that prioritize creativity and well-being, organizations can empower interior designers to thrive and excel in their craft, ultimately leading to the development of groundbreaking designs and enriched professional experiences within the field of interior design.*

**Keywords:** Work environment, interior designers, creativity, collaboration, well-being, design studios, workspace

### \*Author for Correspondence

Vaishnavi Singh  
E-mail: vaishnavi@s.amity.edu

<sup>1</sup>Student, Bachelor of Interior Design Amity School of Architecture and Planning Amity University Uttar Pradesh Lucknow

<sup>2</sup>Associate Professor, Amity School of Architecture and Planning, Amity University Lucknow Campus

Received Date: April 20, 2024

Accepted Date: May 17, 2024

Published Date: May 19, 2024

**Citation:** Vaishnavi Singh, Deepti Pande Rana. Optimizing the Work Environment for Interior Designers: Enhancing Creativity, Collaboration, and Well-being in Design Studios and Beyond. International Journal of Atmosphere. 2024; 01(1): 1–14p.

## INTRODUCTION

The difference between an interior designer who works exclusively at a laptop and chair versus one who operates in a flexible, creatively stimulating environment is profound in terms of creativity, innovation, and overall well-being.

An interior designer confined to a traditional office setup, (Figure 1) limited to a laptop and chair, often faces constraints that inhibit creativity. This static environment can lead to mental fatigue, lack of inspiration, and reduced motivation over time. When confined to a repetitive workspace, the

sedentary work can negatively impact physical health and overall job satisfaction. On the other hand, a designer who operates in a flexible and creatively stimulating space experiences numerous advantages [2]. By having the freedom to work on a couch, bean bag, garden swing, or within an environment designed to ignite creativity, this designer benefits from enhanced inspiration and motivation. The varied surroundings stimulate different brain parts, leading to more innovative thinking and problem-solving. Working in diverse spaces also fosters adaptability and a willingness to explore new ideas.



**Figure 1.** Traditional work setup (Chair, Desk and Laptop).

The environment plays a crucial role in supporting the creative expression and overall well-being of interior designers. Spaces that stimulate the senses, such as incorporating natural elements like greenery, natural light, and comfortable seating options, contribute to a more conducive work atmosphere. These elements can boost mood, reduce stress, and increase productivity.

It is the time for reimagining workspaces to optimize creativity and collaboration within the interior design profession. By implementing strategies informed by case studies and expert insights, organizations can transform traditional office setups into dynamic, inspiring environments [3] that nurture the full potential of interior designers. This reimagining not only leads to innovative solutions but also enhances professional fulfillment and job satisfaction among designers.

## **PURPOSE OF THIS RESEARCH**

The purpose of this research is to explore and understand the impact of work environments on interior designers' creativity, collaboration, and well-being. By investigating how different design studios and workspaces influence these aspects, the research aims to uncover strategies for optimizing interior design work environments. The ultimate goal is to contribute valuable insights that can inform the design and implementation of innovative, supportive, and inspiring workspaces. (Figure 2) This research seeks to drive positive change within the interior design profession by emphasizing the importance of creating environments that enhance designers' creative potential, facilitate effective collaboration, and promote overall job satisfaction and well-being.

This research is further supported by a survey conducted among interior designers to gather first hand insights into their preferences and aspirations for their workplace environments. The survey aims to capture designers' perspectives on the ideal characteristics of workspaces that promote creativity, collaboration, and well-being [1].

## **OVERVIEW OF THE WORK ENVIRONMENT FOR INTERIOR DESIGNERS**

The work environment for interior designers significantly shapes their creativity, collaboration, and overall well-being. While some designers thrive in traditional office settings, others excel in more dynamic and innovative spaces that foster inspiration and innovation.

**Figure 2.** Survey results

### Traditional Office Settings

Interior designers often find themselves working in traditional office environments characterized by cubicles, desks, and standard office furniture. This setup can sometimes limit creativity and collaboration due to its rigid structure. Designers may feel confined to their desks, which can impede the flow of creative ideas. For example, In many design firms, interior designers typically work at assigned desks with minimal flexibility in terms of workspace layout. This setup may not provide the variety and stimulation needed for optimal creativity.



**Figure 3.** Traditional to Innovative to Remote and Flexible Workspace.

### Innovative and Collaborative Studios

On the other hand, many interior designers thrive in studios designed to promote collaboration and creativity. These spaces often feature open layouts, (Figure 3) flexible workstations, and inspiring design elements that encourage exploration and experimentation. For example, Companies like IDEO, [4] a global design and innovation consultancy, are known for their innovative work environments. IDEO's offices incorporate movable furniture, creative meeting spaces, and even prototyping areas that allow designers to experiment freely.

### Remote Work and Digital Platforms

The modern work environment for interior designers also includes remote work opportunities and digital platforms that facilitate virtual collaboration. Designers can work from anywhere using advanced software tools and online platforms to communicate and share ideas. For example, During the COVID-19 pandemic, many interior design firms shifted to remote work models. Designers utilized software like Autodesk Revit and SketchUp for virtual design collaboration, demonstrating the adaptability of the profession to changing work environments.

### Hybrid Approaches and Flexible Workspaces

Increasingly, interior designers are embracing hybrid approaches that combine traditional and innovative elements [5]. Flexible workspaces that allow for both focused work and spontaneous collaboration are becoming more common. For example, Companies like Airbnb have adopted flexible workspace designs that cater to different work styles. Airbnb's offices feature a mix of private booths, open meeting areas, and communal spaces inspired by their unique vacation rentals.

The work environment for interior designers varies widely, from traditional office settings to dynamic, collaborative studios and remote work arrangements. Designers' creativity and productivity are influenced by the physical spaces they work in, emphasizing the importance of creating environments that inspire innovation and well-being.

## IMPORTANCE OF CREATIVITY, COLLABORATION, AND WELL-BEING IN INTERIOR DESIGN

Creativity, collaboration, and well-being are foundational pillars of success for interior designers,

playing critical roles in shaping the quality of their work and overall job satisfaction. Creativity, collaboration, and well-being are interconnected elements that define the success and fulfilment of interior designers. By embracing these principles, designers can unlock their full potential and deliver impactful designs that enrich the lives of their clients and users. Here's why these aspects are crucial, along with illustrative examples:

### **Creativity**

Creativity is at the heart of interior design, driving innovation and unique solutions that meet clients' needs and preferences [6]. A creative mindset allows designers to think outside the box and deliver exceptional designs that inspire and delight.

The work of renowned interior designer Kelly Wearstler exemplifies creativity in interior design. Wearstler's bold and eclectic style, characterized by unexpected combinations of colors, patterns, and textures, showcases the power of creativity to transform spaces into works of art.



**Figure 4.** Creativity, collaboration, and well being.

### **Collaboration**

Collaboration fosters synergy and brings diverse perspectives together, (Figure 4) leading to richer ideas and better outcomes. Interior designers often collaborate with architects, engineers, contractors, and clients to execute cohesive and well-integrated designs.

The collaborative efforts of Studio O+A in designing the headquarters of tech giants like Facebook and Uber demonstrate the impact of teamwork in interior design [7]. By working closely with clients and understanding their culture and values, Studio O+A creates spaces that reflect the identity and aspirations of these companies.

### **Well-being**

Well-being is essential for sustaining creativity and productivity over time. A supportive work environment that prioritizes well-being promotes mental and physical health, reduces stress, and enhances job satisfaction among interior designers.

The WELL Building Standard, which focuses on human health and wellness in building design and operations, underscores the importance of well-being in interior design. Interior designers who integrate wellness principles into their projects, such as optimizing natural light, air quality, and ergonomic furniture, contribute to creating healthier and more inspiring environments.

## **DISPARITIES IN TRADITIONAL VS. INNOVATIVE WORKSPACES FOR INTERIOR DESIGNERS**

The choice of workspace significantly influences the experience and outcomes of interior designers. Contrasts between traditional and innovative work environments highlight the impact on creativity, collaboration, and overall well-being.

### **Traditional Workspaces**

The characteristics of a traditional workspace include that it has a static layout with assigned desks and cubicles [8]. It has limited flexibility in workspace customization and it emphasizes individual work over collaboration.

Disparities among the traditional workspaces are:

*Creativity Constraints:* Designers may feel confined to conventional settings, limiting creativity and innovation.

*Limited Collaboration:* Interaction among team members can be restricted, affecting idea exchange and problem-solving.

*Well-being Challenges:* Sedentary work and lack of ergonomic features may lead to physical discomfort and reduced job satisfaction.

For examples, In traditional design firms, interior designers often work in isolated cubicles or designated workstations, focusing primarily on individual tasks. This setup may hinder creativity and impede effective collaboration with colleagues.

### ***Innovative Workspaces***

Characteristics of Innovative workspaces include that it has Open, flexible layouts that encourage movement and interaction. It has varied work settings (e.g., lounge areas, standing desks) to support different tasks and has integration technology and design elements for enhanced creativity [9].

Disparities among innovative workspaces are-

*Enhanced Creativity:* Designers benefit from diverse environments that stimulate inspiration and unconventional thinking.

*Collaborative Culture:* Spaces designed for interaction promote teamwork and knowledge sharing.

*Focus on Well-being:* Ergonomic furniture, natural elements, and wellness amenities prioritize the health and comfort of designers.

For example, companies like Google and Airbnb are known for their innovative workspaces that prioritize creativity and collaboration. These offices feature open layouts, flexible furniture arrangements, and themed meeting rooms that inspire creativity and foster teamwork among designers and other professionals.

Disparities between traditional and innovative workspaces underscore the importance of creating environments that support creativity, collaboration, and well-being for interior designers. By embracing innovative design concepts, organizations can empower designers to excel and thrive in their profession.

## **CHALLENGES OF TRADITIONAL WORK ENVIRONMENT**

Traditional work environments pose significant challenges for interior designers, impacting their creativity, collaboration, and overall well-being. In these settings, designers often face limitations in terms of inspiration and innovative thinking due to repetitive and static workspaces.

### **Constraints Of Laptop And Chair Settings**

- i. ***Physical Discomfort and Health Issues:*** Sitting at a desk for prolonged periods can lead to ergonomic issues such as:
  - a. ***Back and Neck Pain:*** Inadequate seating and improper posture can cause musculoskeletal discomfort and long-term health problems.
  - b. ***Repetitive Strain Injuries:*** Continuous use of laptops and limited mobility can lead to repetitive strain injuries in wrists, arms, and shoulders.



**Figure 5.** Constraints of Traditional Work Setup.

- ii. **Lack of Creative Stimuli: Limited Interaction with Design Elements:** Designers may have limited exposure to tangible materials and textures that can inspire creative ideas.

**Monotonous Environment:** Working solely from a desk can create a monotonous atmosphere, inhibiting imaginative thinking and innovation.

- iii. **Reduced Collaboration Opportunities: Isolation:** Designers confined to their desks may miss out on spontaneous interactions and brainstorming sessions with colleagues.

**Communication Barriers:** Limited face-to-face interactions can impede effective communication and collaboration on design projects.

At a traditional interior design firm, (Figure 5) designers often work primarily from individual workstations equipped with laptops and standard office chairs. To address these constraints, modern interior design firms are increasingly adopting flexible work arrangements and innovative workspace designs that promote mobility, collaboration, and well-being. By integrating ergonomic furniture, varied work settings, and interactive design tools, these firms empower designers to overcome the limitations of traditional laptop and chair settings and unlock their full creative potential.

### Impact on Creativity and Innovation

#### i. **Inspiration and stimulus**

**Positive Environment:** An office designed to inspire creativity with elements like natural light, vibrant colors, and stimulating textures can ignite innovative thinking (Figure 6).

**Variety of Spaces:** Providing diverse work settings such as collaborative areas, breakout zones, and quiet corners encourages different modes of thinking and fosters creative exploration.

The Pixar Animation Studios campus in California is renowned for its creatively stimulating work environment. The offices feature unique design elements like whimsical meeting rooms and communal spaces designed to spark imagination and foster innovation among artists and designers.



**Figure 6.** Impact of Creativity In Any Brainstorming Task.

ii. *Freedom and Flexibility*

*Flexible Layouts:* An adaptable workspace that allows for personalized setups and rearrangement of furniture promotes a sense of ownership and autonomy, leading to more inventive design solutions [10].

*Open Communication:* Accessible communication channels and a culture of openness facilitate idea-sharing and collaboration, enhancing the collective creativity of the team.

IDEO, a global design and innovation consultancy, emphasizes flexibility and collaboration in its office design. The open layout encourages spontaneous interactions and brainstorming sessions, enabling designers to co-create innovative solutions.

### **Effects On Mental and Physical Well-Being**

#### ***Ergonomics and Comfort***

i. *Proper Workstation Design:* Ergonomic furniture and adjustable setups minimize physical strain and reduce the risk of musculoskeletal disorders.

*Biophilic Elements:* Incorporating natural elements like plants and natural light improves mood and reduces stress levels, enhancing overall well-being.

The WELL-certified offices of Delos Living in New York prioritize employee well-being with features like adjustable desks, ergonomic chairs, and indoor greenery. This approach supports both physical health and mental wellness among interior designers.

ii. *Stress Reduction: Calming Atmosphere:* A well-designed office that minimizes noise and clutter provides a peaceful environment conducive to focused work and stress reduction.

*Work-Life Balance:* Flexible work policies that support work-life balance contribute to better mental health and job satisfaction.

Steelcase, a leading office furniture manufacturer, promotes holistic well-being in its office environments. By integrating relaxation areas and wellness programs, Steelcase helps employees manage stress and maintain mental resilience.

### **BENEFITS OF FLEXIBLE AND CREATIVELY STIMULATING ENVIRONMENT**

Flexible and creatively stimulating environments offer numerous benefits that contribute to individual and organizational success. One key advantage is enhanced innovation: when individuals are encouraged to think creatively and experiment with new ideas, it often leads to breakthrough innovations and problem-solving. Additionally, such environments foster increased engagement and satisfaction among employees, as they have the freedom to shape their work in ways that align with their strengths and interests. This autonomy not only boosts morale but also improves overall well-being, contributing to a positive and supportive workplace culture. Moreover, flexible environments

---

promote adaptability to change, which is essential in today's fast-paced world. By embracing flexibility and creativity, organizations can cultivate a dynamic and resilient workforce capable of navigating challenges and driving continuous improvement.

### **Freedom of Movement and Choice in Workspace**

Freedom of movement and choice in workspaces are paramount in interior design, particularly in creative environments like design studios. This approach is essential for several reasons that directly impact productivity, creativity, and overall well-being of employees:

1. **Enhanced Productivity:** Providing freedom of movement allows employees to choose work settings that best suit their tasks and preferences. Some individuals may thrive in open collaborative spaces, while others prefer quieter areas for focused work. When employees have the autonomy to move around and select their work environment, they can optimize their productivity levels accordingly. In an interior design office, designers often engage in various tasks throughout the day—from brainstorming with colleagues to working on detailed sketches. A mix of collaborative zones, private workstations, and casual meeting areas enables designers to switch between settings based on project needs, ultimately enhancing productivity.
2. **Promotion of Creativity:** Creative industries thrive on inspiration and innovation. Freedom of choice in workspaces fosters creativity by allowing individuals to personalize their surroundings and find spaces that spark their imagination. When employees feel empowered to create a workspace that resonates with them, they are more likely to generate innovative ideas and solutions. Imagine an interior design studio where each designer has the freedom to decorate their workspace according to their unique style and taste. This personalization not only reflects individual creativity but also contributes to a vibrant and inspiring studio atmosphere, stimulating creative thinking among team members.
3. **Support for Well-being and Engagement:** Giving employees the ability to move freely within the office promotes a sense of autonomy and control over their work environment. This autonomy is linked to higher levels of job satisfaction, employee engagement, and overall well-being. Employees feel valued when their workspace preferences are considered, leading to increased morale and a positive workplace culture. In a forward-thinking interior design firm, flexible workspaces are designed to accommodate different work styles and activities. From standing desks to cozy breakout areas, employees have the freedom to choose where and how they work based on their comfort and needs, which in turn contributes to a healthier and more engaged workforce.

### **Influence on Inspiration and Motivation**

The influence of inspiration and motivation is profound in an interior designer's office, where creativity is at the heart of every project. A well-designed workspace can significantly impact the inspiration and motivation of designers. For example, an office adorned with curated design elements, such as art installations, mood boards, and stylish furnishings, can serve as a constant source of inspiration. When designers are surrounded by aesthetically pleasing and thoughtfully designed spaces, it ignites their creativity and encourages innovative thinking. Furthermore, a collaborative environment with flexible work areas and interactive zones can foster motivation by promoting teamwork and idea-sharing among colleagues. Overall, an inspiring and motivating office environment not only enhances the quality of work produced but also contributes to the overall satisfaction and success of interior design teams.

### **Cognitive Benefits of Varied Surroundings**

The cognitive benefits of varied surroundings within an interior designer workspace are significant, influencing creativity, problem-solving abilities, and overall cognitive functioning. Designers thrive when they have access to diverse environments that stimulate different senses and perspectives. For instance, incorporating natural elements like plants and sunlight into work areas can improve mood and focus, leading to enhanced cognitive performance. Similarly, providing spaces with varying levels of

privacy, such as open collaborative zones and quiet nooks, supports cognitive flexibility by allowing designers to choose environments that suit their current task or mood. This variety in surroundings helps prevent mental fatigue and encourages fresh thinking throughout the design process.

For example, imagine an interior design studio where designers have access to a rooftop garden for brainstorming sessions or a cozy library corner equipped with books and soft seating for quiet reflection. These diverse settings not only offer inspiration but also support cognitive agility, enabling designers to approach challenges from different angles and generate innovative design solutions. By strategically incorporating varied surroundings into the workspace, interior design firms can optimize cognitive benefits and foster a creative and productive environment for their teams.

### **ELEMENTS OF AN OPTIMIZED WORK ENVIRONMENT**

Creating an optimized work environment for interior designers involves strategic integration of elements that stimulate the senses, prioritize comfort, and promote mood enhancement and stress reduction. Firstly, stimulating the senses through natural elements and lighting is crucial. Incorporating indoor plants, and natural materials like wood and stone, and maximizing natural light not only enhances aesthetics but also creates a connection to nature, which can boost creativity and overall well-being. Natural light, in particular, regulates circadian rhythms and promotes alertness, leading to improved focus and productivity among designers.

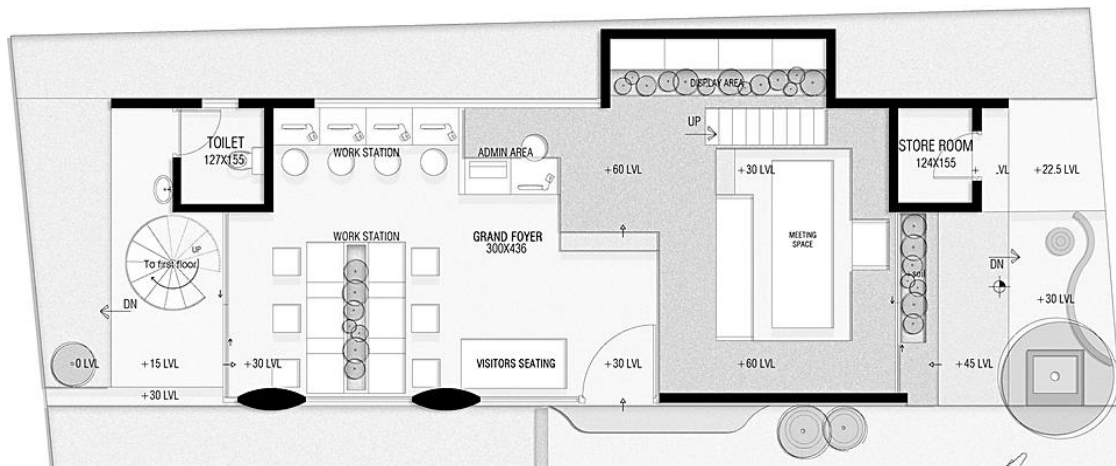
Secondly, the choice of comfortable and adaptive seating is essential in a design studio. Interior designers spend extended periods seated while sketching, drafting, or collaborating. Ergonomic chairs that support good posture and adjustable desks or workstations allow designers to customize their setup for optimal comfort and productivity. By prioritizing comfort and adaptability in seating options, interior design firms can reduce physical strain and enhance the overall work experience for their teams.

Lastly, designing for mood enhancement and stress reduction contributes to a positive work environment. This can be achieved through thoughtful use of color, texture, and layout. Incorporating calming colors like blues and greens, soft textures such as plush rugs or cushions, and creating designated relaxation areas can promote relaxation and reduce stress levels among designers. Additionally, incorporating elements that evoke positive emotions, such as inspiring artwork or motivational quotes, can uplift moods and foster a sense of purpose and creativity within the workspace. By intentionally designing for mood enhancement and stress reduction, interior designers can cultivate a supportive and inspiring atmosphere that enhances both mental well-being and productivity.

### **LITERATURE STUDIES**

#### **The Violet Office**

Context and Design Idea An architect's "man cave," (Figure 7) where his life and inner preferences are expressed and his aura is enhanced. An area reserved for his group, his loved ones, and others wishing to benefit from his knowledge. A medium that enables the sharing of concepts, education, meetings, relaxation, employment, and daily life. a location that both as an architect and a person completely suits his make and construction. To keep the creative vibe going, a relaxed arrangement for the group recommends a cozy yet contemplative area. We refer to the noble goal or purpose of discovering that special, unconventional component, ideology, and philosophy in our design as "VIOLET." The Architect's Office, Violet.



**Figure 7.** Plan of the VIOLET office

*Innovation:* The building's east-west linear orientation and the apertures that border its 5 m width allow natural lighting and cross ventilation to change the mood of the area constantly. The building's fifteen meters of east light in the morning passes straight through, and the dawn light does the same with the west light.



**Figure 8.** Office varying from a traditional working setup.

*Planning:* The plan calls for no interior barriers and a minimal number of external walls. It is a five-meter-tall single-story space with two mezzanine levels at the east and west ends. Although there are 12 workstations on the ground floor, there is a waiting area and an administrative desk located in the south entry grand foyer, (Figure 8) which is close to the main door. A spiral staircase leads to a small pantry on the mezzanine on the west side, while the architect's workspace is located on the mezzanine on the east. The west must serve as a formal workspace, while the east is more laid-back and designed for interaction.

*Space:* In contrast to any other design strategy, the project demonstrates a strong desire to break free from the conventions of facade architecture by adhering to the fundamental principles of keeping things straightforward, and eye-catching, and combining a modern color scheme and palette with natural

materials. The way the indoor and outdoor areas are contrasted makes them blend into one another, giving the impression of an open office and making the space a motivating destination for guests.



**Figure 9.** Varied seating options present in the office.

The open office layout with single rooms encourages interaction, transparency, teamwork, open discussions, and a lively learning environment that contributes to fostering a meaningful project. (Figure 9) The changing volumes and heights of the space within the hall provide a range of spatial experiences. For instance, the grand foyer's double height and the lower ceiling of the mezzanine floors at both ends create various visual connections within and outside the building. The conversation pit, mezzanine rooms, staff workstations, patio, front yard, and terrace offer a variety of interactive spaces in different combinations.

### **Mad Creative Agency**

Moca Architecture's project for Mad Creative, (Figure 10) a product design agency in downtown Curitiba, Brazil, encompasses over 200 square meters characterized by a blend of colors, textures, and unconventional materials. Mad Creative, known for its national brand development, enlisted Moca Architecture, led by Ana Sikorski and Katia Azevedo, to design a significantly larger space than their previous studio. The motivation behind the project was the agency's team expansion and the shift back to a more traditional office environment.

"They were previously in a smaller studio and approached us to create a space that would enhance the quality of life for employees and provide a comfortable working environment," explains Ana.

The primary objective of the project was to create a workspace that would feel like an extension of a home office, promoting creativity and productivity among employees upon their return. The design focused on color-coded areas tailored for group activities, collaborative work, discussions, communal meals, and relaxation. Comfort and seamless flow were key considerations from the outset of the project. In the meeting room, a folding door system was implemented to integrate the entire space. Adjacent to this, a grandstand was installed to accommodate large presentations, fostering an inclusive and relaxed atmosphere within the environment.



**Figure 10.** Plan of MAD Creativity Agency office.



**Figure 11.** Varied Flexible Working Spaces

In many of Moca's projects, (Figure 11) colors have played a pivotal role in delineating spaces and shaping the personality of the environment. In this particular project, careful consideration was given to how light and color interacted within the space, especially with regard to specific lighting that wouldn't distort or interfere with printing tests and product development processes. This ensured that the chosen colors and lighting scheme would support the agency's work without compromising the accuracy of their creative outputs.



**Figure 12.** Different Colour Combination Used in The Office (10)

Mad Creative's owners had a specific requirement for incorporating unusual materials into the design. The architect explained, (Figure 12) "They wanted an urban-style environment that aligned with the brand's aesthetics, showcasing innovation and creativity through surprising materials." The space features colored metallic structures, blue carpeting, painted ceilings, plywood, and MDF, creating a vibrant mix of colors and textures that define the atmosphere.

This unique blend is immediately noticeable at the entrance, where a portal crafted from pink plywood serves as a display and storage area for the agency's projects. Beyond being a workplace, the space serves as a bold statement of the brand's identity, inspiring both customers and employees alike.

## **CONCLUSION: THE FUTURE OF INTERIOR DESIGN WORKSPACES**

The evolution of interior design workspaces is poised to revolutionize the profession, with a compelling call to action for redefining traditional environments. Design firms and organizations must embrace innovative approaches to create workspaces that nurture creativity, collaboration, and well-being among interior designers. This transformative shift will not only enhance the quality of design outcomes but also elevate job satisfaction and professional fulfillment.

Design firms must prioritize the development of dynamic and adaptable work environments that go beyond conventional office setups. Embracing flexible layouts, integrating cutting-edge technologies, and emphasizing wellness-focused design principles are essential steps toward redefining interior design workspaces. By fostering an environment that encourages experimentation, collaboration, and continuous learning, organizations can empower designers to push boundaries and unlock their full creative potential.

Redefining interior design workspaces brings forth a multitude of benefits for both designers and organizations. Designers experience heightened creativity and job satisfaction in inspiring environments that support their well-being and professional growth. Collaborative workspaces facilitate stronger teamwork and innovation, leading to enhanced project outcomes and client satisfaction. For organizations, investing in creative workplace design translates into increased productivity, talent retention, and a competitive edge in the industry.

Looking ahead, the future of interior design workspaces. By embracing these advancements, interior design workspaces will evolve into dynamic hubs of creativity and innovation, shaping the future of the profession.

## **REFERENCES**

1. KANTAR. KANTAR. [Online].; 2022. Available from: <https://www.kantar.com/inspiration/research-services/future-of-work-employee-perception-on-flexibility-pf>.
2. INTERIOR SHOWPLACE. [Online].; 2024. Available from: <https://www.interiorshowplace.com/solutions/work-spaces/innovation-center/>.
3. OFFICE EVOLUTION. [Online]. Available from: <https://www.officeevolution.com/blog/coworking-vs-traditional-office-space-whats-the-difference/>.
4. Reshko A. FORTY SEVEN. [Online]. Available from: <https://fortyseven47.com/blog/remote-working-and-digital-workplace-implementation-due-to-coronavirus-crisis/>.
5. NEILL CO. COWORKING INSIGHTS. [Online].; 2021. Available from: <https://coworkinginsights.com/five-trends-we-can-expect-to-see-in-hybrid-workspaces/>.
6. Sarma S. VANTAGE CIRCLE. [Online].; 2023. Available from: <https://blog.vantagecircle.com/creativity-at-work/>.
7. SYNAPTIC POTENTIAL. [Online]. Available from: <https://synapticpotential.com/creativity/creativity/>.
8. Karen. ERGONOMIC CHAIR DIRECT. [Online].; 2022. Available from: <https://www.ergonomicchairs-direct.com/why-is-having-an-ergonomic-chair-for-your-office-so-important/>.

9. Moreira S. ARCHDAILY. [Online].; 2021. Available from: <https://www.archdaily.com/978771/mad-creative-agency-moca-arquitetura>.
10. Abdel H. ARCH DAILY. [Online].; 2021. Available from: <https://www.archdaily.com/965604/the-violet-office-nestcraft-architecture>.