

Exploring Chocolate's Potential: A Review of Its Role in Drug Delivery and Health Benefits

Devendra S. Mahale^{1*}, Bhavika Rakesh Jaiswal¹, Apurva S. Patel¹, Pavan Somnath Gosavi¹, Prashant Bansilal Mahale¹, Neha R. Jaiswal²

Abstract

The abstract explores the versatile nature of chocolate, highlighting its role as a medium for drug delivery systems due to its resistance to microbial growth and rich nutritional profile. Medicated chocolate, infused with drugs, offers a palatable solution to enhance patient compliance, particularly among children, while stimulating serotonin production for added therapeutic benefits. Cocoa, abundant in polyphenols, contributes to chocolate's health advantages, including cholesterol reduction and cardiovascular health. Scientific evidence suggests potential cognitive, fetal, and athletic performance enhancements from chocolate consumption. Practical insights into chocolate preparation and manufacturing ensure consistent quality, with ongoing research aiming to optimize its use in healthcare delivery. Additionally, the abstract discusses the chemical components of chocolate and its potential health benefits, ranging from cholesterol reduction to cognitive function improvement. Furthermore, it presents various studies highlighting chocolate's positive effects on heart health, stroke prevention, fetal growth, and athletic performance. The methodology section outlines the preparation and evaluation processes for medicated chocolate, emphasizing organoleptic properties, phytochemical screening, pH, blooming tests, hardness, stability, and moisture content determination. Overall, the abstract underscores chocolate's unique blend of culinary enjoyment and therapeutic effectiveness, suggesting promising avenues for its application in healthcare. Chocolate, a versatile food renowned for its taste and texture, has gained attention for its potential health benefits and role in drug delivery. Medicated chocolate, infused with drugs, offers an innovative approach to enhancing patient compliance, particularly among children, due to its palatability. This paper explores the chemistry of chocolate the method of chocolate preparation, chocolate manufacturing processes, and evaluation methods are outlined, emphasizing the importance of uniform drug distribution and product quality. Overall, chocolate represents a unique fusion of culinary enjoyment and therapeutic effectiveness, offering potential solutions in healthcare delivery and beyond.

*Author for Correspondence

Devendra S. Mahale
E-mail: devendramahale2306@gmail.com

¹Research Scholar, Department of Quality Assurance, P.S.G.V.P. Mandal's College of Pharmacy, Shahada, Maharashtra, India

²Assistance Professor, Department of Quality Assurance, P.S.G.V.P. Mandal's College of Pharmacy, Shahada, Maharashtra, India

Received Date: April 08, 2024

Accepted Date: April 26, 2024

Published Date: June 14, 2024

Citation: Devendra S. Mahale, Bhavika Rakesh Jaiswal, Apurva S. Patel, Pavan Somnath Gosavi, Prashant Bansilal Mahale, Neha R. Jaiswal. Exploring Chocolate's Potential: A Review of Its Role in Drug Delivery and Health Benefits. Trends in Drug Delivery. 2024; 11(2): 16–24p.

Keywords: Antioxidants, Serotonin, Medicated chocolate, Pediatric patients, Dark chocolate, Cholesterol, Cognitive decline, Cardiovascular risks, Manufacturing processes, Viscosity, Taste, Texture, Stability, and Chemistry.

INTRODUCTION

Chocolate is a highly versatile food renowned for its ability to create diverse taste and texture experiences. It serves as a dry medium that is immune to microbial growth, making it perfect for integrating active ingredients sensitive to water. Rich in compounds such as saturated fat, polyphenols, sterols, and antioxidants, chocolate offers numerous health benefits. The primary

component of cocoa, which is rich in polyphenols, significantly enhances its nutritional content. When chocolate is infused with drugs in appropriate quantities, it becomes medicated chocolate. This innovative approach capitalizes on chocolate's palatability to enhance patient compliance, especially among children who often prefer sweet tastes. Furthermore, chocolate increases serotonin production, a neurotransmitter connected with relaxation, thereby heightening its appeal. Medicated chocolate provides several advantages beyond taste preferences. Its quick onset of action and potential for reducing drug doses during manufacturing make it an attractive option for drug delivery systems. Moreover, for medications with bitter tastes that can pose compliance challenges, chocolate can mask unpleasant flavors, making it particularly beneficial for pediatric patients. In developing a chocolate drug delivery system, researchers aim to optimize drug loading capacity while preserving the sensory appeal of chocolate. By understanding children's taste preferences and utilizing chocolate's palatability, this approach holds promise for improving patient outcomes and satisfaction. Overall, medicated chocolate represents a unique fusion of culinary enjoyment and therapeutic effectiveness in healthcare delivery [1].

Known for its versatility, chocolate can be mixed with a variety of ingredients to create a variety of flavor profiles and textures. Its ability to transform into different senses makes it ideal for creating a variety of flavors to suit the different preferences of children and teenagers, especially. Individuals perceive tastes according to five fundamental attributes: sweet, bitter, sour, salty, and umami. Among them, sweet tastes are especially pleasant because they are designed to help us identify and recognize the energy-rich sugars we need to nourish our bodies [2].

Memories are very important in shaping our unique personalities. Each person's memories are an individual tapestry, unique to them and diverse even as they retell shared experiences. Despite this diversity, we all retain different aspects of memory, from fleeting details to lasting impressions. These memories seamlessly weave together events, factual knowledge, emotional nuances, and acquired skills in our minds. While some memories flicker momentarily in our consciousness, others become deeply imprinted, becoming permanent pieces of the puzzle of our cognitive existence, enriching our understanding of ourselves and others [3].

Chocolate-based medication involves blending a chocolate base with the drug, creating a Chocolate drug delivery system upon the drug's release from the chocolate [4].

Memory, a prominent cognitive function, allows people to encode sensory signals, events, and information and then store and recall them for short or long periods as needed. The challenges of today's demanding and competitive world often exacerbate memory problems, leading to problems such as poor memory and poor recall. Despite common complaints about memory loss, most people's memories remain stable until they reach old age or experience certain neurological disorders. Many factors, including age, stress, and emotional state, can affect memory function, potentially leading to memory loss, amnesia, anxiety, high blood pressure, dementia, or more serious conditions such as schizophrenia and Alzheimer's disease (AD) [5].

CHOCOLATE

A delicious treat enjoyed around the world, chocolate can be described as a divine combination of fat-free particles containing sugar and cocoa solids artfully dispersed in a rich sea of cocoa butter. Like a work of art, this intricate slurry is carefully crafted from the seeds of the tropical *Theobroma cacao* tree, nature's gift to every chocolate lover. The cocoa seed's journey from bitter to blissful taste begins with the important fermentation process to bring out the true flavor. After fermentation, the beans elegantly go through a series of processes including drying, washing, and meticulous roasting, ending with cocoa bean extraction. These jewel-like feathers undergo a grinding process to create cocoa chunks, the essence of pure chocolate, the essence of raw chocolate. The sublime cocoa mass,

often delicately liquefied and molded, is aptly named Chocolate Liqueur, which captures the soul of this delicious treat. Digging deeper, this chocolate liqueur is further processed into its components: juicy cocoa particles and velvety cocoa butter, harmoniously intertwined in a delicate and balanced dance. Those who love the simple pleasures of unsweetened baking chocolate are in for a tempting experience as chocolate boasts a harmonious blend of cocoa solids and cocoa butter in varying proportions. Today, chocolate is an experience that transcends boundaries with the alluring charm of sweet chocolate, the blend of cocoa products, cocoa butter, or other fats, and the sweet embrace of sugar. Creamy-flavored milk chocolate is a delicious option whose sweetness is enhanced by the addition of powdered or condensed milk. At the other end of the spectrum is heavenly white chocolate, a sublime creation made from cocoa butter, sugar, and milk, offering a unique sensory experience without cocoa solids. While acknowledging the enormous impact of chocolate, it is worth noting that cocoa solids contain powerful alkaloids, including theobromine and phenethylamine. This is intrinsically linked to physiological effects intertwined with serotonin levels in the brain, adding to the complex picture of this beloved chocolate [6].

Chemistry of Chocolate

Phenylethylamine, a naturally occurring brain compound known as the love drug for its ability to induce feelings of happiness and peace, is also found in large quantities in chocolate. Tryptophan, a key chemical in the brain responsible for the synthesis of serotonin, a neurotransmitter associated with pleasure, is another element found in chocolate. Chocolate also contains phenylethylamine, an amphetamine-like substance that can increase both blood pressure and blood sugar levels. The combined effect of these components increases alertness and increases feelings of happiness and satisfaction. This response is thought to be initiated by the release of b-endorphin; an opioid peptide responsible for its pleasurable effects [7] [Figure 1].

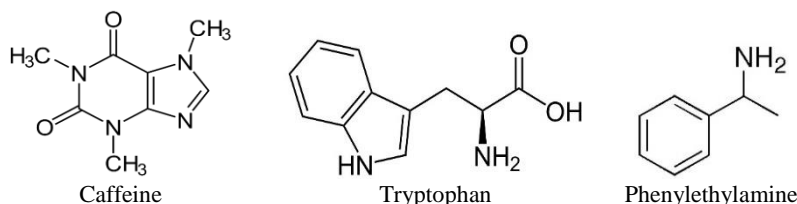


Figure 1. Component of chocolate.

Cocoa Known as a rich source of natural antioxidants, cocoa acts as an important component in preserving cell membranes and protecting DNA from damage caused by free radicals. Cocoa also plays an important role in reducing the risk of atherosclerosis and plaque formation on artery walls by preventing the oxidation of low-density lipoprotein (LDL) cholesterol. The antioxidant properties of cocoa are mainly due to the presence of procyanidins, epicatechin, and catechins, which effectively inhibit LDL oxidation. It's noteworthy that dark chocolate and cocoa have been observed to raise levels of high-density lipoprotein (HDL) cholesterol and also prevent the oxidation of low-density lipoprotein (LDL). The presence of catechins, a phytochemical found abundantly in a variety of plant-based foods and beverages, is important in dark chocolate. Its content is 12 mg per 100 g. Likewise, dark chocolate has an epicatechin content of 41.5 mg per 100 g, suggesting potential health benefits including increased plasma antioxidant activity, dilation of bronchial arteries, and enhanced fat oxidation. Moreover, catechin intake has been linked to oxidation resistance of LDL, highlighting the diverse health benefits of catechins. Epicatechin, a significant bioactive compound found in cocoa and other flavonol-rich foods and beverages, has been correlated with improved endothelial function in both animal and human research. In particular, in a salt-sensitive animal model of hypertension, epicatechin was found to lower blood pressure and alleviate end-organ damage, highlighting its potential as a protective agent against complications due to hypertension. Central to this protection is the involvement of nitric oxide in maintaining vascular health and endothelial function. Dark

chocolate's antioxidant capacity is 13.1 per 100 g, further supporting its role as a powerful source of health-promoting compounds [8].

Health Benefits of Chocolates

The authors point to the discovery that cocoa, the key ingredient in chocolate, contains biologically active phenolic compounds.

This finding has altered perceptions of chocolate and prompted investigations into its potential influence on aging, as well as conditions like oxidative stress, blood pressure control, and atherosclerosis.

The antioxidant capacity of chocolate may yield diverse health benefits. Dark chocolate, with its higher cocoa content, could offer greater advantages and potentially contain less fat and sugar, though it's crucial to confirm by checking the label.

Consuming chocolate might offer the following advantages:

- lowering cholesterol levels
- Preventing cognitive decline
- Reducing the risk of cardiovascular problems

It's important to recognize that the potential health benefits mentioned below are derived from individual studies, and more research is required to confirm chocolate's impact on health.

Additionally, chocolate bars contain more than just cocoa, so it's important to consider the advantages and disadvantages of other ingredients such as sugar and fat.

Cholesterol

An in-depth study published in the *Journal of Nutrition* revealed the potential benefits of consuming chocolate in lowering low-density lipoprotein (LDL) cholesterol, commonly referred to as "bad cholesterol." This particular study examined the effects of chocolate bars filled with plant sterols (PS) and cocoa flavanols (CF) on cholesterol levels. The results were positive. Regular consumption of specially formulated chocolate bars along with a low-fat diet can play an important role in maintaining cardiovascular health. By effectively lowering cholesterol and increasing blood pressure, chocolate lovers have a delicious way to take care of their heart health and overall well-being.

Cognitive Function

Scientists at Harvard Medical School have conducted research suggesting that incorporating two daily cups of hot chocolate into one's routine could potentially offer significant benefits for brain health and cognitive function, especially among the elderly population. Through their investigations, these researchers have observed that the consumption of hot chocolate can lead to enhanced blood circulation in the brain, specifically targeting areas vital for optimal brain functioning.

Furthermore, their groundbreaking lab experiment, detailed in a publication from 2014, revealed promising outcomes regarding a cocoa derivative known as flavanols. This particular compound exhibited potential in shielding and even preventing harm to the crucial nerve pathways that tend to deteriorate in individuals grappling with Alzheimer's disease. By leveraging the benefits of this extract, researchers hypothesize that one could effectively combat the progression of cognitive symptoms associated with this debilitating condition.

In another noteworthy study, which appeared in the publication *Appetite* in 2016, findings suggested that indulging in chocolate every week might yield cognitive enhancements. This enticing proposition underscores the notion that regularly partaking in these delectable treats could serve as a proactive measure in maintaining and even enhancing cognitive function over time. Thus, these

collective insights present a compelling case for the inclusion of hot chocolate and chocolate-based products in one's diet as a means of supporting cognitive health and overall well-being.

Heart Disease

A study published in *The BMJ* found that people who consume chocolate are almost a third less likely to develop heart disease. The authors' analysis led them to conclude that increased chocolate consumption could potentially be associated with a reduced risk of cardiometabolic disorders, highlighting the potential benefits of including chocolate in the diet for heart health. The authors called for further research, emphasizing that more experimental studies are needed to definitively establish the beneficial effects of chocolate consumption on cardiovascular health. The data presented in this study highlight the importance of exploring the potential protective effects of chocolate consumption in preventing cardiovascular disease and other cardiometabolic diseases and provide strong evidence for the need for more comprehensive research in this area.

Stroke

In a comprehensive study of 44,489 people, Canadian scientists made the groundbreaking discovery that people who included chocolate in their diet just once had a 22% lower risk of having a stroke compared to those who skimmed on chocolate consumption. Moreover, people who ate an average of 2 ounces of chocolate per week had an even more surprising 46% lower risk of death from stroke. Building on these compelling findings, a follow-up study detailed in the respected journal *Heart* back in 2015 carefully examined the long-term effects of diet choices on the overall health of a large group of people, including 25,000 men and women. Particularly noteworthy results from this study indicate a surprising link between consuming up to 100 grams of chocolate per day and a measurable reduction in the likelihood of heart disease and stroke. This surprising study highlights the potential protective benefits of including moderate amounts of chocolate in your diet, which could prevent you from developing serious cardiovascular disease. Using these scientific discoveries can pave the way for more informed dietary decisions that prioritize heart health and overall well-being.

Fetal Growth and Development

A study presented at the 2016 Society of Maternal-Fetal Medicine Conference in Atlanta, Georgia found that consuming 30 grams (about 1 ounce) of chocolate daily during pregnancy may provide valuable benefits for fetal growth and development. The study highlighted the potential positive impact of these specific eating patterns in maintaining fetal health. Consuming chocolate in appropriate amounts has the potential to improve fetal nutrition and growth during this critical stage of pregnancy. These findings illuminate the link between chocolate consumption and its potential benefits for fetal health and highlight the importance of choosing a balanced diet during pregnancy. Research suggests that consuming chocolate in moderation as part of a varied, healthy diet may promote optimal fetal development. By including chocolate as a regular component of their daily diet, pregnant women can potentially improve the growth and well-being of their unborn child, highlighting the importance of making informed dietary choices during pregnancy.

Athletic Performance

A study published in the *Journal of the International Society of Sports Nutrition* provides interesting information about the potential benefits of incorporating dark chocolate into your fitness training regimen. A study conducted in the UK on cyclists during time trials found that consuming dark chocolate reduced oxygen consumption while cycling at a moderate pace, allowing riders to cover more distance during a two-minute vigorous ride. Test period. The key to dark chocolate's performance boost is its rich flavanol content, particularly epicatechin, which has been linked to increased nitric oxide release in the body. Interestingly, this phenomenon is similar to the nitric oxide-enhancing properties found in beet juice, indicating a potential synergy between these two natural substances in improving athletic performance. These results shed light on the intriguing relationship

between dark chocolate, nitric oxide production, and training performance, providing a tasty yet scientifically backed option for athletes looking to optimize their training programs [9].

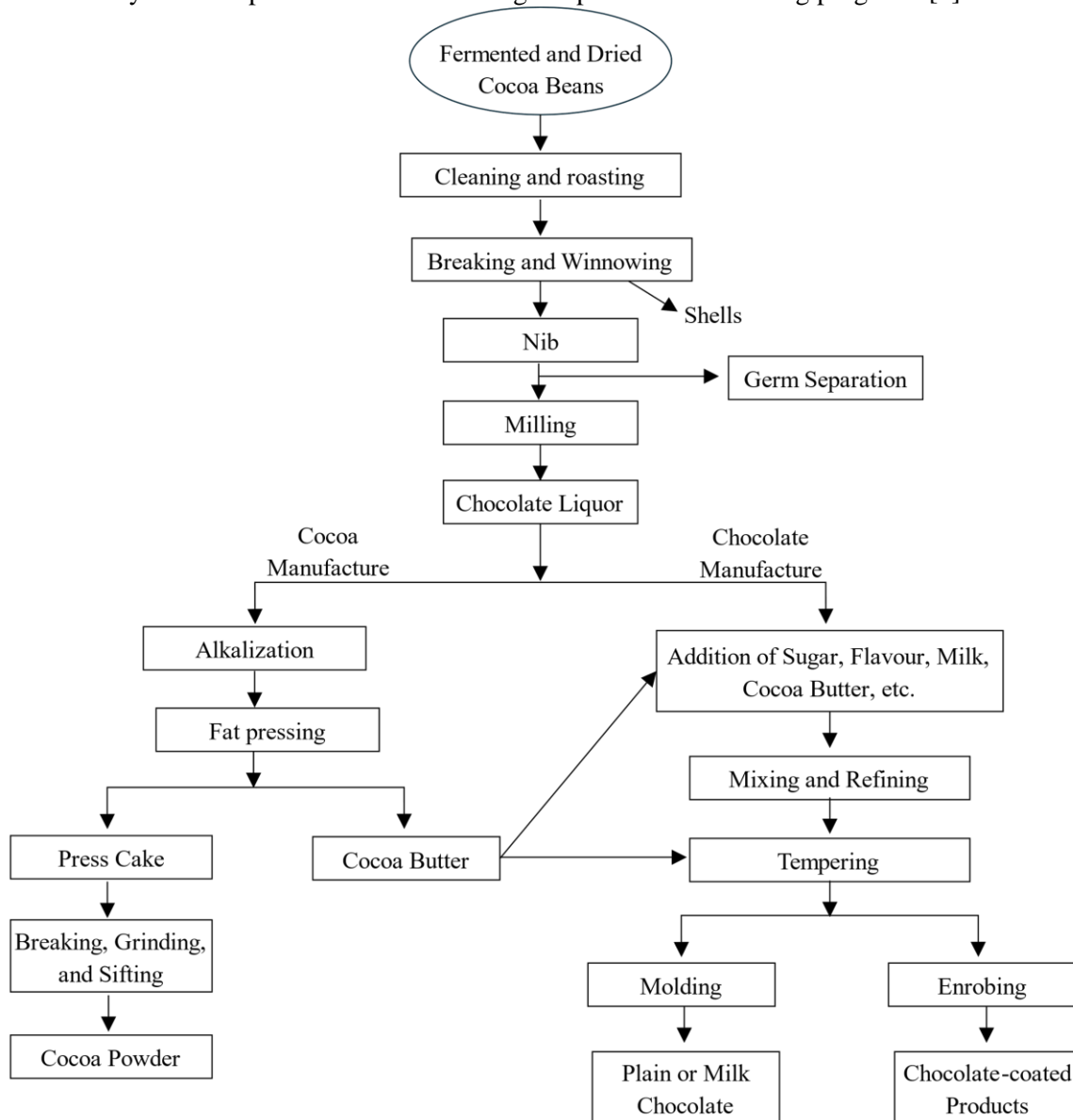


Figure 2. Flowchart of Chocolate Manufacturing [7].

METHOD OF CHOCOLATE PREPARATION

Preparation of Chocolate Base

To start, sugar (pharmaceutical grade) and water are heated in a beaker using a heating mantle at 50°C for 4-5 minutes to create the sugar syrup. Simultaneously, cocoa butter is melted in another beaker for 2 minutes. The sugar syrup and cocoa powder are then mixed into the melted cocoa butter. After cooling to a semi-solid state, a flavoring agent is added to the mixture.

Chocolate Preparation Method

The oven temperature was set to 50°C, and the prepared chocolate base was melted until it reached a fluid state. Then, the required quantity of Active Pharmaceutical Ingredients (APIs) was added and thoroughly stirred using a magnetic stirrer for 10 minutes to achieve uniform mixing. The mixture was then poured into a polycarbonate mold and cooled for 15 minutes until solidified [10–11].

Chocolate Manufacturing Processes

Chocolate manufacturing processes typically involve five stages:[12] (See Figure 2)

1. Mixing
2. Refining
3. Conching of chocolate paste
4. Tempering and depositing
5. Moulding and de-molding

ASSESSMENT OF CHOCOLATE BASE

The viscosity of the prepared chocolate base: Is assessed using a Brookfield Rotational digital viscometer. The spindle is rotated at 20 rpm, and the chocolate base samples are heated to 50°C before measuring.

Assessment of Taste, Texture, and Mouthfeel Characteristics: The taste, texture, and mouthfeel qualities of the chocolate are evaluated by a group of 10 human volunteers, who rate them using a scale from 1 to 5 as detailed in [Table 1] [13].

EVALUATION OF CHOCOLATE

Formulation [13–15]

1. Organoleptic Property
 - Color
 - Odour
 - Taste
2. Preliminary Phytochemical Screening
 - Test for carbohydrate
 - Test for protein
 - Test for saponins glycoside
3. pH
4. Blooming Test
 - Fat blooming
 - Sugar blooming
5. Hardness
6. Stability

1. *Organoleptic Properties*: The general appearance of chocolate formulation, its visual identity, and overall elegance are essential.
 - i. For consumer acceptance
 - ii. To ensure consistency from one batch to another
 - iii. For monitoring trouble-free manufacturing. The control of the general appearance of chocolate involves the measurement of no. of attributes such as chocolate colors, presence or absence of an odor, taste, surface texture, and mouth feel.

2. *Preliminary Phytochemicals Screening*: Preliminary phytochemical screening was performed to detect the presence of organic chemical constituents in chocolate formation. Following organic chemical constituents were screened for detection of their presence or absence in the formulations as mentioned above: carbohydrate, protein, amino acid, fats and oils, steroids, volatile oil, glycoside, flavonoids, alkaloids, tannins and phenolic compounds, vitamins, gum, and mucilage.

- i. *Test for Carbohydrate (Molisch Test/General Test)*: Take 2-3 ml of chocolate formulation, add a few drops of alpha-naphthol solutions in alcohol, shake, and add conc. Sulphuric acid from the side of a test tube, the violet ring is a form of at the junction of two liquids indicating the presence of carbohydrates.

-
- ii. *Test for Protein (Biuret Test/General Test)*: Take 3 ml of the chocolate formulation; add 4% NaOH and a few drops of 1% copper sulfate solution, violet color indicates the presence of protein.
 - iii. *Test for Saponins Glycoside (Froth Formation)*: Place 2 ml of chocolate formulation in water and this was added to a test tube, shake well and stable foam is formed indicating the presence of saponins glycoside.
3. pH-2 gm of prepared chocolate was dissolved in 100 ml of phosphate buffer solution and the pH of the resulting solution was studied by a digital pH meter with a glass electrode.
4. Blooming Test
 - i. *Fat Blooms*: When a thin layer of fat crystal foams on the surface of the chocolate formulation this will cause the chocolate to lose its gloss and a soft white layer will appear, giving the finished article an unappetizing look. Fat bloom is caused by the recrystallization of the fats and/or migration of a filling fat to the chocolate layer storage at a constant temperature will delay the appearance of fat bloom.
 - ii. *Sugar Bloom*: This is a rough and irregular layer on top of the chocolate formulation. Sugar bloom is caused by condensation (when the chocolate is taken out of the refrigerator). This moisture will dissolve the sugar in the chocolate. When the water evaporates afterward, the sugar recrystallizes into rough, irregular crystals on the surface. This gives chocolate an unpleasant look. Each sample was subjected to treatment cycles comprising (1) 30°C for 11 hours, (2) temperature shifting for 1 hour, (3) 18°C for 11 hours, and (4) temperature shifting for 1 hour. A test chocolate formulation observed, after step at 18°C for 11 hours, whether or not blooming has taken place.
 5. *Hardness*: The hardness of a chocolate or compound coating is an expression of its structure and solidity. Since it is the fat phase of such products that defines the structure it might be expected that the chocolate hardness will be related to the structure and solidity of the fat phase. Firstly, hardness can be defined and calculated from penetrometer measurements. Soeters described this relationship as:

$$H \text{ (kg=cm)} = 15.069 * 100=p \quad (1)$$

Where p is the penetration in mm/10 (using a 9.18-degree cone with a blunted tip 0.15 cm diameter and a total weight of 100 g.

6. *Stability*: The stability studies of the formulated formulation were carried out 25/75(°C/RH) and 2-80°C for one month. The chocolate was packed in aluminum foil paper and the organoleptic properties (color, Odour, taste, mouth feel, and appearance) were evaluated to assess the stability of the prepared formulation.
7. *Moisture content determination*: The chocolate formulation's moisture content is determined using a digital Karl Fischer titrator. These instruments are designed to calculate the percentage (%) of water content by using the formula:

$$\text{Water} = [\text{Volume (mL) TS of water determination consumed} \times f \text{ (mg/m)}/\text{weight of sample (mg)}] \times 100 \text{ (\%)}$$

Where,

f = The number of mg of water (H₂O) corresponding to 1 ml of water,

Determination TS,

TS= Water determination test sample

Table 1. Taste, Texture, and Mouth Feel Characteristics Assessment

Characters	Criteria
Appearance	Glossy, even shine; no streaks, dots, cracks, or “fog”
Aroma or Smell	Chocolaty with only a light scent of any flavorings; fresh with no burnt, smoky, chemical smells
Snap	Break clean without crumbling or layering; ideally, a crisp pop when broken (loudest for dark chocolate)
Taste	Chocolaty, flavors do not overpower the chocolate taste. Good after taste
Texture	Creamy and smooth, not waxy; promptly and evenly melts in the mouth

CONCLUSION

In conclusion, the review highlights chocolate's potential as a drug delivery system and its health benefits. It combines scientific rigor with practical insights into chocolate manufacturing and evaluation processes. More research is needed to comprehensively grasp chocolate's therapeutic capabilities and enhance its utilization in healthcare contexts.

REFERENCES

1. B. Narasimha Rao, Viswanath V, M. Purushothaman, V. Prasanna Vaishnavi., Synthesis and Formulation of New Functionalized Citric Acid-Based Dendrimers for Drug Delivery Using an Antibacterial Agent ,Word Journal of Pharmaceutical Research, volume 4, issue 9,2015,PP: 1054-1062.
2. Stephen A. Gravina, Gregory L. Yep, Mehmood Khan. Human Biology of Taste, 2013; 33(3): PP: 217-222 2013 DOI: 10.5144/0256-4947.2013.217.
3. Alan Baddeley, Learning and Memory Brain Campaign, <https://app.nova.edu/toolbox/instructionalproducts/edd8124/fall11/1974-Baddeley-and-Hitch.pdf>.
4. Reddy Sunil, K. Mounika, A. Venkatesham. Design and fabrication of medicated chocolate formulation by chocolate drug delivery system. Int J Curr Pharm Res, 2017; 9(5): 128-133 DOI: <http://dx.doi.org/10.22159/ijcpr.2017v9i5.22156>.
5. Vasudevan M, Parle M. Pharmacological actions of Thespesia populnea relevant to Alzheimer's disease. Phytomedicine. 2006 Nov 24;13(9-10):677-87.
6. Taubert D, Roesen R, Lehmann C, Jung N, Schömig E. Effects of low habitual cocoa intake on blood pressure and bioactive nitric oxide: a randomized controlled trial. Jama. 2007 Jul 4;298(1):49-60.
7. Sharma Mayank, et.al: (2012), chocolate formulation as a drug delivery system for pediatrics, Indonesian J. Pharm. Volume 23, issue 4, 216-224.
8. Geoff Talbot, prediction of the hardness of the chocolate and compound coating, unsilvers research, Colworth. <https://www.scribd.com/document/459462189/Prediction-of-the-Hardness-of-Chocolate-and-Compound-Coatings-tcm-8-3614-1-pdf>
9. Medically reviewed by Natalie Butler, R.D., L.D. — By Joseph Nordqvist on July 17, 2018 Health benefits and risks of chocolate <https://www.medicalnewstoday.com/articles/270272>.
10. The Ayurvedic Pharmacopoeia of India, Part-II Formulation Vol. II ed. Ist India: Ministry of Health and Family Welfare, Government of India, Department of AYUSH, Page no. 133-254.
11. Figure 2: <https://www.ampac1.com/blog/wp-content/uploads/2018/02/chocolate.jpg>
12. Beckett ST, editor. Industrial chocolate manufacture and use. John Wiley & Sons; 2011 Sep 7.
13. Sharma M, Jain DK. Chocolate formulation as a drug delivery system for pediatrics. Indonesian J Pharmacy, 2012; 23(4): 216-224.
14. Reynolds J, ed. Martindale, The Extra Pharmacopoeia, ed.31.London, Eng. Royal Pharm. Society, 1996.

15. Der Marderosian A, et. Natural Product Medicine, Philadelphia, PA: George F Stickley co, 121-22,140,313-15, 1988.