

Towards Intelligent Healthcare: Artificial Intelligence's Impact on Healthcare

Neha Vaishnav^{1*}, Anjali Singh²

Abstract

Artificial Intelligence (AI) stands as a transformative force within healthcare, offering multifaceted support to various processes and medical professionals. This comprehensive study investigates the extensive array of AI applications and its potential to reshape the healthcare landscape. Specifically, it examines the utilization of deep-learning methodologies in harnessing vast medical datasets to enhance healthcare provision. Expanding beyond theoretical discussions, this study scrutinizes AI's role in breast cancer, seizure, and tumor detection, alongside its contributions to drug discovery endeavors. Moreover, it addresses the challenges and constraints inherent in AI adoption, while also envisioning its future trajectory within the healthcare domain. The study traverses a wide spectrum of AI integration in healthcare, encompassing heightened diagnostic accuracy, personalized medical interventions, pharmaceutical breakthroughs, and operational efficiency enhancements. Furthermore, it confronts the ethical ramifications associated with AI integration, emphasizing the imperative of principled and equitable implementation practices. By synthesizing empirical findings and theoretical insights, this study contributes to a nuanced understanding of AI's evolving role in healthcare delivery, paving the way for its responsible and impactful integration.

Keywords: CVNN, Generative Adversarial Networks, MRI, ML, Artificial Intelligence, computer

INTRODUCTION

AI technology can be efficiently used in several sectors like healthcare to aid numerous processes like patient adherence, medical diagnoses and treatment, drug discovery, and other medical research. It can also be used for administrative processes saving a lot of time, effort, and money. Machine Learning and Deep Learning models can help in the detection of many diseases and can aid the treatment process. FDA has also approved several devices and AI tools including radiological image processing and nuclear magnetic resonance imaging. Generative AI can also be used for creating synthetic images of various body parts and diseases [1]. The ability of AI to evaluate enormous

volumes of medical data quickly and accurately is one of the technology's most important contributions to the healthcare industry. This improves patient outcomes by empowering medical providers to make better judgments. AI-powered solutions can help with early disease diagnosis, health issue prediction, and treatment plan personalization based on patient data.

AI is also improving medical imaging methods, making it possible to analyze scans and X-rays more accurately and quickly. This helps find tiny anomalies that could have gone unnoticed otherwise and expedites the diagnosing procedure.

*Author for Correspondence

Neha Vaishnav
E-mail: 2023pccsneha102@poornima.org

¹Student, Computer Science Engineering, Poornima College of Engineering, Jaipur, Rajasthan, India

²Assistant Professor, Computer Science Engineering, Poornima College of Engineering, Jaipur, Rajasthan

Received Date: April 06, 2024

Accepted Date: April 17, 2024

Published Date: June 20, 2024

Citation: Neha Vaishnav, Anjali Singh. Towards Intelligent Healthcare: Artificial Intelligence's Impact on Healthcare. Journal of Artificial Intelligence Research & Advances. 2024; 11(2): 77–83p.

Furthermore, AI-driven technologies are enabling telemedicine and remote patient monitoring, increasing patient convenience and accessibility, especially for those living in underserved or rural locations.

MACHINE LEARNING

Machine learning has revolutionized healthcare. It can help in detecting various types of diseases and cancer. The large ML model trains extensive data taken from a diverse population and the machine learns and trains with the data. It can detect various diseases like cancer and other abnormalities. It would need an extensive data set as more data would ensure precise and refined results [2].

NATURAL LANGUAGE PROCESSING

Natural Language Processing (NLP) is a specialized field that focuses on the interaction between human language and computer systems. Its techniques are adept at capturing, analyzing, and interpreting unstructured healthcare data, enabling seamless integration with electronic healthcare systems. This not only enhances cost-effectiveness but also improves the overall quality of healthcare delivery. Within healthcare, NLP finds extensive applications in creating, understanding, and categorizing clinical documentation and research literature. NLP systems excel in tasks such as analyzing unstructured clinical notes, generating reports (e.g., for radiology examinations), transcribing patient interactions, and facilitating conversational AI, thereby enhancing efficiency and accessibility in healthcare services.

DEEP LEARNING

Machine learning is a versatile AI method that learns patterns from data without predefined rules, allowing for predictive modeling without strong assumptions. Traditional machine learning involves transforming raw data into suitable representations for pattern detection [3]. Deep learning differs by learning representations directly from data using neural networks with multiple layers, enabling abstraction at various levels. Deep learning surpasses traditional artificial neural networks by its layer depth, connections, and ability to learn meaningful abstractions. It has achieved remarkable success in various fields, including image and speech recognition, natural language understanding, and healthcare applications like diabetic retinopathy detection and skin cancer classification. These advancements suggest a promising future for deep learning in real-world medical care as shown in Figure 1.

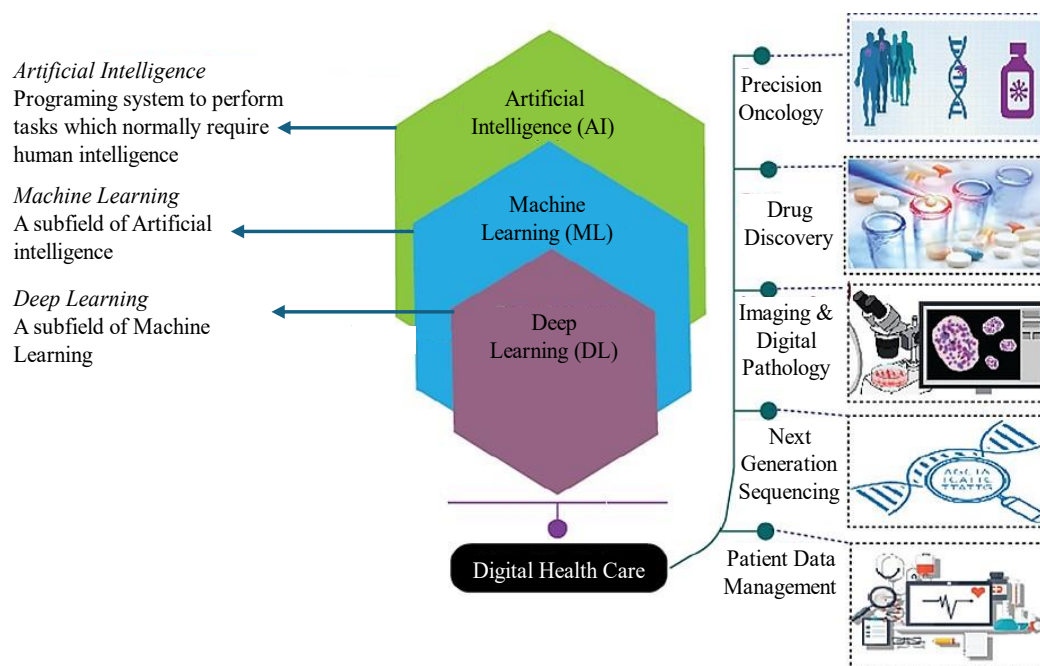


Figure 1. Block diagram for digital health care.

LITERATURE REVIEW

After reviewing notable scholarly papers, this literature review explores several key applications of Artificial Intelligence (AI) in healthcare. It delves into how AI is transforming patient outcomes, streamlining operational processes, and driving advancements in medical research. The analysis also highlights the challenges encountered and the broader implications for clinical practice and healthcare delivery [4].

Clinical Imaging and Diagnosis

One of the early applications of AI was in brain Magnetic Resonance Imaging (MRI) scans and the prediction of Alzheimer's using deep learning techniques through the use of computer vision. Radiology is the first area that saw a lot of application. AI can help in tracing brain tumors and identifying molecular marks [5]. AI is a powerful tool in image analysis in ECG and echocardiography charts that supports the cardiologist in decision-making. It can also detect heartbeat patterns and can aid in the early detection of several diseases like breast cancer.

Furthermore, AI comprises application of Artificial Neural Networks (ANN) named Generative Adversarial Networks (GANs). It has two networks: one consists of a generator that synthesizes new images similar to real images in the training dataset [6]. Another model comprises a discriminator that shows the difference between synthetic and real images. Both models when trained together can result in radiological progress like abnormal detection and image synthesis as shown in Figures 2–4.

Virtual Assistant and Patient Care

The integration of ML and AI in healthcare has evolved to encompass patient monitoring and management through virtual care, facilitated by advanced wearable technology solutions. These innovations are now part of standard care protocols. Specifically, AI plays a crucial role in managing chronic conditions like diabetes mellitus, hypertension, sleep apnea, and chronic bronchial asthma, leveraging wearable and non-invasive sensors [7].

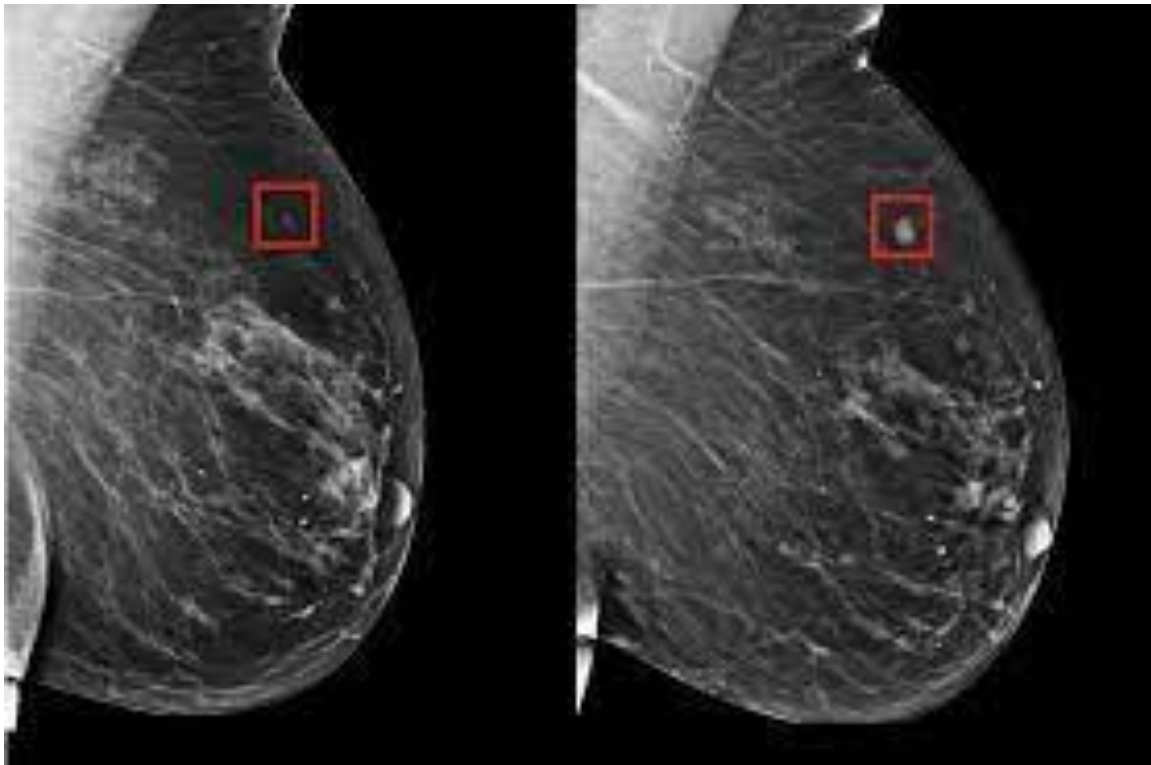


Figure 2. AI can aid in the early detection of breast cancer.

Administrative Application

Healthcare workers like nurses donate a significant amount of their time to administrative activities. Technologies like robotic process automation RPA may be beneficial in an assortment of applications containing claims, dealing with dispassionate documentation, income phase administration, and electronic health records management. Compared to different forms of AI it is economical. AI science using machine intelligence to be used in the identification of wrong claims and correct labeling of claims saves a lot of time and services for the government, insurance issuers, and providers alike [9]. Machine learning plays a meaningful function in the preliminary stages of clinical tests. Several AI-powered chatbots are used to answer basic queries of patients regarding appointments and other medical queries. RPA involves software and robots that mimic human action.

Drug Discovery and Medical Research

AI tools can significantly help in drug discovery, drug screening, drug design, and chemical synthesis. AI can recognize lead compounds, predict the 3-D structure of target proteins, and determine drug activity. DL methods, such as undirected graph recursive neural networks and graph-based CVNN are used to predict the solubility of molecules. AI can also help in the prediction of toxicity in drug molecules to avoid toxic effects [10]. Software like DeepChem is also used that uses deep learning for chemistry and scientific research as shown in Figure 5 and Table 1.

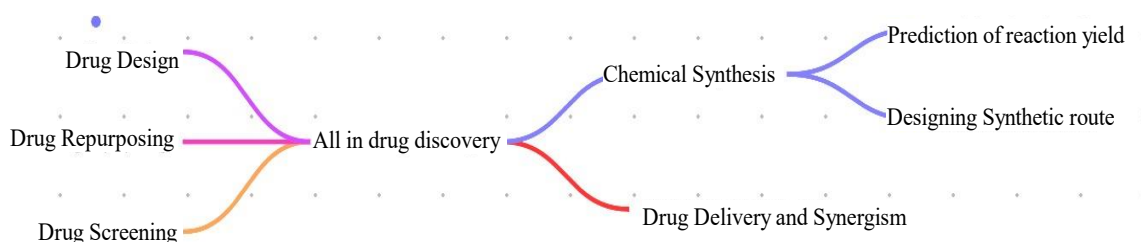


Figure 5. AI in drug discovery.

Table 1. Shows the list of AI tools useful in healthcare research and drug discovery.

S.N.	Tools	Details	Website/Github
1.	Procheck	Tool to check the stereochemical quality of the protein structure	https://www.ebi.ac.uk/thornton-srv/software/procheck/
2.	RDKit	RDKit is an open-source cheminformatics toolkit that provides a wide range of functionalities for molecular modeling, compound screening, and chemical informatics. It includes tools for molecular fingerprinting, similarity searching, and molecular descriptor calculation.	www.bioinf.jku.at/research/DeepTox
3.	Organic	A molecular generation tool that helps to create molecules with desired properties	https://github.com/aspuru-guzik-group/ORGANIC
4.	Moigan	Morgan is An Open-Source Implementation of a Generative Adversarial Network (GAN) For Creating Molecular Graphics. It Allows the Generation of New Molecular Structures with Desired Properties and has Applications in De Novo Drug Development and Molecular Optimization.	https://github.com/nicola-decao/MoIGAN
5.	DeepNeural NetQSAR	Python-based system driven by computational tools that aid the detection of the molecular activity of compounds	https://github.com/Merck/DeepNeuralNet-QSAR
6.	AlphaFold	Predicts 3D structures of proteins	https://deepmind.com/blog/alphafold

RESEARCH METHODOLOGY

Several scholarly articles from different sites like PubMed, Google Scholar, National Library of Medicine were analyzed and studied. The number and quantity of research on this topic is on the rise. Duplicate research papers were eliminated and a general review on this topic was presented. Further research can involve a more systematic and comprehensive review. Several major applications are reviewed along with their challenges and limitations.

RESULTS

Through this review of the current state of AI in healthcare, a lot of conclusions can be drawn about its accountability and other challenges and future scope. The amount of research in this field has also considerably increased with the rise of new AI tools and ML models. IoT and other software integration can also be a pivotal step in transforming healthcare, for example, AI-powered stethoscope can be used. Also, there are several challenges associated with the use, so we need to identify these and work on the ethical and technical issues. A deep study into the topic concludes the vast majority of the scope of AI along with several limitations situated with it.

CHALLENGES AND OPPORTUNITIES

As the growth of AI has seen exponential growth in many sectors including a significant one in healthcare, it has several limitations and challenges too. Implementing AI in healthcare raises many ethical and social concerns, data privacy and security issues, biases in data and other validation, and clinical adoption issues. Machine Learning models require large datasets that are easily accessible for training and building a more refined model. Often, healthcare businesses have issues and a natural reluctance to share the confidential data of their patients. The problem of storing extensive datasets if collected can be eliminated through the use of cloud computing services.

There are also several ethical and social concerns with the use of AI in healthcare [11]. AI is often regarded as a black box because it is difficult to know how it reached the given conclusion. The issue regarding who will be held accountable in case of system failure is also a major concern. Doctors could not be held accountable as they had no role in developing the algorithm and also the developer is unrelated to the healthcare setting. Countries like China and Hong Kong have banned the use of AI to make ethical decisions.

Many future opportunities are also associated with this sector. Models that can provide a highly personalized prescription of medicine can be built using data like the patient's medical background, lifestyle choices, and genomics.

CONCLUSION

This study is based on a general literature review from various scholarly sources. Future research can focus on carrying out a systematic review of this topic and improving the dataset that is present. Additionally, there are many challenges and ethical, governance, and technical issues related to the use of AI in healthcare. Bias in available data and its quality is also a major concern while using this technology. In healthcare where every decision holds quite a significance, the decision made by deep learning models and their interpretation raises concerns about its clinical adoption and data accountability along with major privacy and security concerns. AI models trained on one population or age group cannot fit well for a general population. We will need a diverse dataset and collaboration between data scientists and healthcare professionals to generalize it for all.

REFERENCES

1. Jiang F, Jiang Y, Zhi H, Dong Y, Li H, Ma S, Wang Y, Dong Q, Shen H, Wang Y. Artificial intelligence in healthcare: past, present and future. *Stroke Vasc Neurol*. 2017 Dec 1; 2(4): 230–243.
2. Shaheen MY. Applications of Artificial Intelligence (AI) in healthcare: A review. *ScienceOpen Preprints*. 2021 Sep 25.

3. Al Kuwaiti A, Nazer K, Al-Reedy A, Al-Shehri S, Al-Muhanna A, Subbarayalu AV, Al Muhanna D, Al-Muhanna FA. A review of the role of artificial intelligence in healthcare. *J Pers Med.* 2023 Jun 5; 13(6): 951.
4. Reddy S, Fox J, Purohit MP. Artificial intelligence-enabled healthcare delivery. *J R Soc Med.* 2019 Jan;112(1):22-28. doi: 10.1177/0141076818815510.
5. Mak KK, Wong YH, Pichika MR. Artificial intelligence in drug discovery and development. *Drug Discovery and Evaluation: Safety and Pharmacokinetic Assays.* Cham: Springer; 2023 Sep 28; 1–38.
6. Holmes J, Sacchi L, Bellazzi R. Artificial intelligence in medicine. *Ann R Coll Surg Engl.* 2004; 86(5): 334–8.
7. Pashkov VM, Harkusha AO, Harkusha YO. Artificial intelligence in medical practice: regulative issues and perspectives. *Wiad Lek.* 2020 Dec; 73(12 cz 2): 2722–2727.
8. Väänänen A, Haataja K, Vehviläinen-Julkunen K, Toivanen P. AI in healthcare: A narrative review. *F1000Research.* 2021; 10(6): 1–21.
9. Miotto R, Wang F, Wang S, Jiang X, Dudley JT. Deep learning for healthcare: review, opportunities and challenges. *Brief Bioinform.* 2018 Nov; 19(6): 1236–1246.
10. Zhu H. Big data and artificial intelligence modeling for drug discovery. *Annu Rev Pharmacol Toxicol.* 2020 Jan 6; 60: 573–589.
11. Duch W, Swaminathan K, Meller J. Artificial intelligence approaches for rational drug design and discovery. *Curr Pharm Des.* 2007 May 1; 13(14): 1497–1508.