

AI-Driven Carbon Capture and Utilization: Advancing Sustainable Solutions for Climate Change Mitigation

Sharmila G.^{1,*}, Sathiyasri U.², Smriti Nandi², Suriya S.², Guruprasanth D.V.²

Abstract

Climate change stands out as one of the biggest challenges for our planet today, as it poses a threat unprecedented to global ecosystems and human societies. This phenomenon is primarily driven by the increase in atmospheric greenhouse gases, particularly carbon dioxide (CO₂), which trap heat in the atmosphere and cause rising global temperatures. These sources are largely industrial processes, transportation, and energy production, all of which rely very much on the power generation and cement manufacturing sectors. Unavoidably, the growing concern over climate change affecting extreme weather events, the increase in sea levels, and the destruction of ecosystems underlines the pressing necessity for a revolution that could provide such an innovation toward effects mitigation and finding a sustainable route toward future development. The application of these artificial intelligence (AI)-based techniques leads to the optimized process of carbon capture with reduced energy consumption and high overall system efficiency. This will integrate AI to create greater operational viability in technologies that include carbon capture, utilization, and storage (CCUS); besides, it supports the general transition towards an economy with low carbon as well. Industries are facing new pressures of regulations and other social expectations in terms of minimizing carbon emissions. Thus, there is a need to develop the ability to achieve effective carbon management strategies while ensuring implementation. This will then help to support the kind of global efforts needed towards climate change mitigation and facilitate the development of sustainable practices, which can lower industry emissions considerably. All results presented here indicate that innovations regarding carbon management through the integration of AI and other cutting-edge technologies will bring about transformative change. Effective carbon capture and utilization solutions therefore can help address one of the world's biggest problems.

Keywords: Climate change, global warming, greenhouse gases, carbon dioxide (CO₂), industrial processes, carbon capture, reduced energy consumption, utilization, CCUS (carbon capture, utilization, and storage), carbon management strategies

*Author for Correspondence

Sharmila G.
E-mail: sharmilacse@mvit.edu.in

¹Assistant Professor, Department of Computer Science Engineering, Manakula Vinayagar Institute of Technology, Kalitheerthalkuppam, Puducherry, India

²Student, Department of Computer Science Engineering, Manakula Vinayagar Institute of Technology, Kalitheerthalkuppam, Puducherry, India

Received Date: January 08, 2025

Accepted Date: January 16, 2025

Published Date: January 25, 2025

Citation: Sharmila G., Sathiyasri U., Smriti Nandi, Suriya S., Guruprasanth D.V. AI-Driven Carbon Capture and Utilization: Advancing Sustainable Solutions for Climate Change Mitigation. Journal of Remote Sensing & GIS. 2025; 16(1): 40–48p.

INTRODUCTION

Climate change is a pressing global challenge that involves long-term shifts in temperature and weather patterns, predominantly driven by human activities. The accumulation of greenhouse gases, such as carbon dioxide, results from activities such as fossil fuel combustion, deforestation, and various industrial processes. These gases trap heat in the atmosphere, leading to global warming, a phenomenon with extensive impact on ecosystems, human health, economies, and social structures [1].

The consequences of rising temperatures are far-reaching, manifesting in extreme weather events, such as hurricanes, droughts, and floods. These

events disrupt agriculture, threaten food security, and destabilize economies. For instance, drought diminishes crop yields, whereas excessive rainfall results in soil erosion and flooding, impacting agricultural communities.

The melting of polar ice caps and glaciers due to warming temperatures causes a rise in sea levels, endanger coastal habitats and displaces communities. This forced migration exacerbates social and economic inequalities. Industrial activities, particularly carbon emissions from factories, are further driving climate change. High-emission industries, including power generation, cement production, and oil refining, contribute significantly to the global carbon output [2].

The role of artificial intelligence (AI) in carbon capture solutions to mitigate these impacts is shifting toward sustainable practices. Agreements such as the Paris Agreement encourage drastic reductions in greenhouse gas emissions. One promising development is the Carbon Capture, Utilization, and Storage (CCSL) technology, which, when integrated with AI, offers a dual solution: capturing CO₂ from industrial sources and converting it into commercially valuable products [3].

When combined with AI, CCSL technologies can enhance industrial efficiency by converting captured carbon into materials such as concrete or synthetic fuels. This approach aligns with the concept of a circular economy, in which resources are continually repurposed to minimize waste.

AI-Driven Optimization in CCSL

AI significantly improves CCSL technology by optimizing carbon capture processes through real-time monitoring and predictive maintenance. AI algorithms analyze operational data to minimize energy consumption and reduce costs, making CCSL more economically viable. The continuous feedback and adaptability of AI-driven systems enable companies to refine processes and effectively reduce their carbon footprints [4].

A Path Toward a Sustainable Future The integration of CCSL and AI represents a crucial step in addressing climate change and advancing sustainable industrial practices. By supporting industries in reducing emissions, this approach contributes to global climate goals and promotes a more resilient future. Advanced technologies, such as AI, will be essential in steering nations toward sustainable practices, fulfilling the urgent need for climate action [5].

LITERATURE REVIEW

Honghao et al. examined the role of AI in enhancing carbon capture and storage technologies. The authors discuss various AI techniques, including machine learning and optimization algorithms, which can improve capture efficiency and monitor storage sites [6]. Singh et al. explored the integration of machine learning with existing carbon capture technologies. The authors presented case studies demonstrating how predictive models can optimize operational parameters, reduce costs, and increase carbon capture rates [7]. Yan et al. discussed the development of AI-driven decision support systems to aid in carbon management strategies. This study highlights the importance of data analytics in making informed decisions regarding carbon capture and utilization projects [8]. Hanifa et al. investigated the application of deep learning techniques to optimize carbon capture processes. The authors provided insights into how neural networks can be utilized to enhance the efficiency and effectiveness of various carbon capture methods [1]. Peres et al. focused on the application of machine learning to carbon utilization. The authors categorized various approaches, including chemical conversion and bioengineering, and discussed how AI can facilitate the development of innovative utilization pathways [4].

AI for Monitoring and Risk Assessment in Carbon Storage

Authors: Green, D., and Edwards, P.

Summary: This study explored the use of AI for monitoring and risk assessment of carbon storage sites. The authors emphasized the importance of predictive analytics in identifying potential risks and ensuring the safety and integrity of carbon storage facilities.

Future Perspectives on AI-Enabled Carbon Capture and Utilization

Authors: Ali, S., and Gupta, R.

Summary: The authors provide a forward-looking perspective on the integration of AI into carbon capture and utilization. This paper discusses emerging technologies, their potential for increased efficiency, and the need for interdisciplinary collaboration to address climate change challenges.

EXISTING WORK

Carbon Clean Solutions (CCSL) has pioneered an advanced AI-driven platform that significantly enhanced the efficiency and effectiveness of carbon capture, utilization, and storage (CCUS) technologies in various industrial applications. Central to this innovation is the integration of sophisticated machine learning algorithms that allow the system to predict CO₂ levels in industrial exhaust streams in real-time, enabling the dynamic optimization of the carbon capture process. The methodology begins with the strategic deployment of smart sensors in an industrial facility. These sensors continuously monitor critical operational parameters, including the temperature, gas flow rate, humidity, and CO₂ concentration, generating vast amounts of high-quality data. This real-time data collection is crucial for developing a comprehensive understanding of emission profiles under varying operational conditions.

The data collected were then transmitted to an AI platform that employed advanced predictive analytics. These AI models assess current conditions in conjunction with historical data to accurately forecast CO₂ emissions. This predictive capability enables the CCSL to determine the optimal capture rates necessary to maximize efficiency while maintaining compliance with regulatory standards. Furthermore, the incorporation of prescriptive analytics enhances the functionality of the system by providing actionable recommendations for operational adjustments, maintenance schedules, and energy consumption strategies tailored to specific conditions and requirements.

This dual approach combining predictive and prescriptive analytics allows CCSL to not only maintain consistently high carbon capture rates but also minimize operational costs and energy consumption significantly. For instance, by analyzing sensor data in real-time, an AI-driven system can dynamically adjust the carbon capture mechanisms, optimize the chemical processes involved in capturing CO₂, and improve the overall energy efficiency of the system. In addition, the AI system employs a continuous learning mechanism that adapts to incoming data and refines its predictive capabilities over time. This means that, as the operational environment evolves, AI can adjust its strategies to ensure optimal performance. This iterative learning process enhances the reliability of the system, making it a robust solution for carbon management in various industries.

The innovative integration of AI with CCUS technologies exemplifies a significant leap forward in industrial carbon management by providing scalable solutions that align with global sustainability goals. As industries face increasing pressure to reduce their carbon footprints, the CCSL approach addresses the urgent need for effective climate change mitigation strategies. By offering a comprehensive, data-driven solution, CCSL not only enhances the operational efficiency of carbon capture but also contributes meaningfully to broader efforts aimed at combating climate change and fostering a more sustainable future.

CHALLENGES IN EXISTING WORK

Carbon Clean Solutions (CCSL) focuses on developing technologies for CCUS. When integrating AI into CCUS initiatives, CCSL may face several challenges, including:

- *Data quality and availability:* AI algorithms require large amounts of high-quality data for training purposes. In many cases, data related to carbon emissions, capture processes, and utilization outcomes may be incomplete, inconsistent, or difficult to access. A flowchart of the existing work is shown in Figure 1.
- *Complexity of carbon capture processes:* The processes involved in carbon capture and utilization are complex and involve multiple variables. Developing AI models that accurately represent these processes and that can make reliable predictions is challenging.

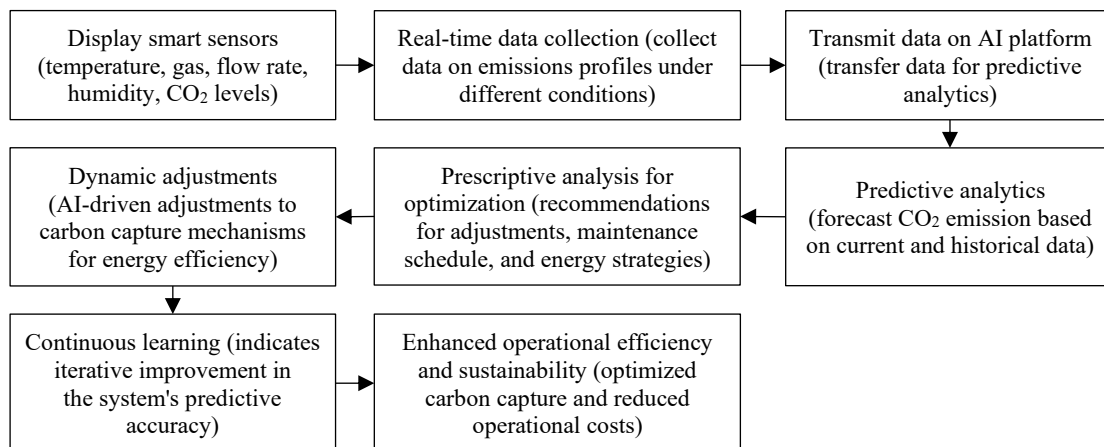


Figure 1. Flowchart for existing work.

- *Integration with existing infrastructure:* CCSL technology must be integrated with existing industrial processes and infrastructure. AI systems must be designed to operate seamlessly within these established frameworks, which can be technologically challenging.
- *Model interpretability:* AI models, particularly deep learning algorithms, can often be black boxes, making it difficult for stakeholders to understand how decisions are made. This lack of interpretability can hinder the trust and adoption among engineers and operators.
- *Regulatory compliance:* AI applications in the CCUS must comply with various regulatory frameworks that govern carbon emissions and environmental impacts. Ensuring that AI-driven solutions meet these regulatory requirements is challenging.
- *Real-time monitoring and adaptation:* Implementing AI for real-time monitoring and optimization of carbon capture processes requires robust sensors and data acquisition systems. Additionally, models must adapt to changing conditions in real-time.
- *Skill gap and expertise:* There may be a shortage of professionals with expertise in both AI and CCUS. Bridging this skill gap is crucial for the successful implementation of AI solutions.
- *Cost of implementation:* The initial investment in AI technologies and their integration into carbon capture systems are significant. Organizations may be hesitant to invest without clear evidence of a return on investment.
- *Predictive maintenance challenges:* While AI can help predict maintenance needs, accurately forecasting when components fail or require maintenance in the context of CCUS operations can be difficult owing to variability in operating conditions.
- *Public perception and acceptance:* There may be skepticism regarding the effectiveness and safety of AI applications in environmental technologies. Overcoming public apprehension and ensuring transparency are vital for broader acceptance.

By addressing these challenges, the CCSL can leverage AI to enhance its CCUS technologies, improve efficiency, and contribute significantly to reducing carbon emissions.

PROPOSED WORK

The goal of CCSL is to develop a scalable, cost-effective carbon capture technology that can be deployed across a wide range of industries, including steel and cement production, which are significant CO₂ emitters. CCSL uses an advanced AI-driven platform that integrates machine learning algorithms to predict CO₂ levels in the industrial exhaust and optimize the capture process in real-time.

The system includes smart sensors that monitor various factors, such as the temperature, gas flow rate, and CO₂ concentration, to continuously adjust the capture process. CCSL's innovative CCUS technology of CCSL integrates AI and machine learning to achieve a dynamic and adaptable carbon capture process. At its core, the system employs a series of sophisticated machine learning models

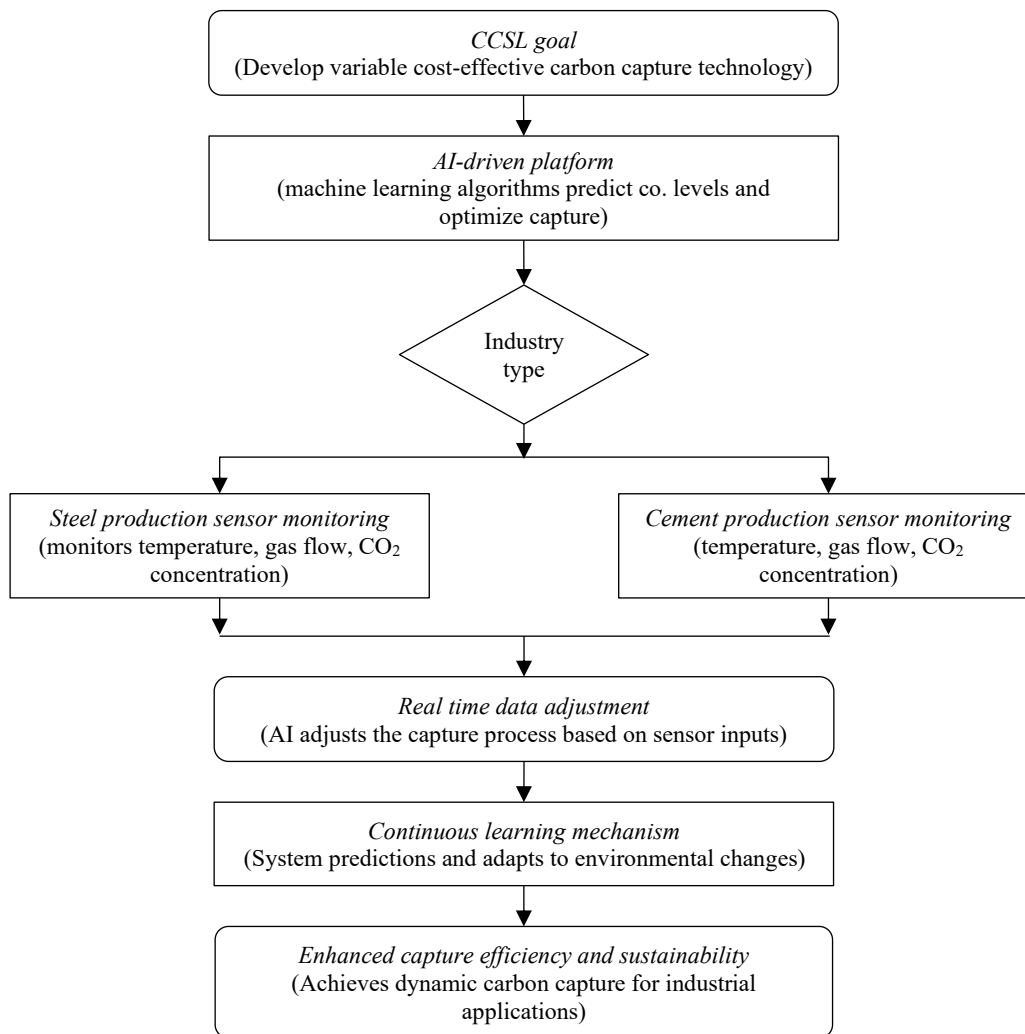


Figure 2. Flowchart for proposed work.

designed to predict CO₂ levels in industrial exhaust and optimize the capture process based on real-time data inputs. A flowchart of the proposed work is shown in Figure 2.

This process involves the use of smart sensors that track multiple variables, including temperature, gas flow rate, and CO₂ concentration, allowing the system to make rapid adjustments as the environmental conditions change.

Data-Driven Decision-Making in CCUS

The foundation of CCSL's approach to CCUS is data-driven decision-making. The project utilizes predictive and prescriptive analytics, which work together to guide crucial decisions in areas such as capture rates, equipment maintenance, and energy consumption. Historical data and live sensor readings provide the basis for training AI models that aim to maintain optimal carbon capture rates while simultaneously lowering operational costs. By continuously analyzing the data, the system enhances efficiency and identifies opportunities for improvement in real-time. Although AI offers substantial advantages in optimizing CCUS, it introduces specific challenges, particularly in terms of data quality, model interpretability, and real-time data processing. CCSL has proactively addressed these issues with tailored solutions that enhance both the reliability and transparency of their AI models. The following points outline the challenges that have been overcome and CCSL's strategies to address them:

- *Data quality and reliability issues:* To combat data quality issues, CCSL employs data validation algorithms.

Table 1. Related study and their key findings.

Scientific study	Focused area	Publication year	Analytical method	Key findings	Reference
Gabrielli et al.	Net-Zero emission in the chemical industry	2020	Industry review	Role of CCUS and biomass in achieving net-zero CO ₂ emissions	[9]
Madejski and Chmiel	CO ₂ captures in energy technologies	2021	Technique review	Evaluation of modern CO ₂ capture methods in energy tech	[10]
Liu et al.	CCUS status and challenges	2022	Systematic review	Current challenges in CCUS implementation	[11]
Tanwar et al.	Large-scale CCUS in India	2022	Review of deployment strategies	Insights into low-carbon pathways and deployment strategies	
Dalei and Joshi	CCUS and enhanced oil recovery	2021	Feasibility analysis	Potential for CCUS in Indian oil refineries	[9]
Singh et al.	CCUS for a clean environment	2020	Environmental review	Challenges and opportunities in CCUS for a sustainable future	[7]
Xu	Progress in CO ₂ capture	2023	Process analysis	Overview of capture technology development	[12]
Yan et al.	Machine learning in CCUS	2023	ML techniques	Advances in ML applications for CCUS, focusing on optimization	[8]

- *Data quality and reliability issues:* To combat data quality issues, CCSL employs data validation algorithms that detect and filter low-quality data, ensuring accurate and dependable inputs. Regular sensor calibration and maintenance help improve data consistency. In cases of missing data, machine-learning-based imputation techniques are applied to estimate values, thereby strengthening the overall data reliability.
- *Model interpretability and transparency issues:* To enhance model transparency, CCSL leverages explainable AI (XAI) techniques, including SHAP (shapely additive explanations) and LIME (Local Interpretable Model-agnostic Explanations) which provide interpretable explanations for AI predictions. Furthermore, CCSL integrates rule-based systems with machine learning to create a predictable and understandable framework. Auditable models, which log into decisions and enable tracking, further promote accountability and troubleshooting.
- *Challenges in real-time data processing:* To minimize latency, CCSL uses Edge AI processing, which allows data to be processed locally rather than relying on centralized systems. This configuration reduces the response time and enhances the decision-making speed. In addition, CCSL has streamlined its algorithms to reduce redundant computations and allow for incremental updates, enabling the system to process data more continuously and with reduced delays. Related studies are shown in Table 1.

Tools Implemented

Essential Tools for CCUS with AI

- *Data acquisition and management: advanced sensors and IoT devices:* These tools provide real-time monitoring and data collection regarding emissions and environmental conditions. They enhance the accuracy of data collection compared with traditional methods, ensuring high-quality inputs for AI models.
- *Data processing and analysis—cloud-based data storage solutions:* Utilizing platforms such as Amazon Web Services(AWS) or Google Cloud allows scalable data storage that can handle large datasets effectively. This overcomes the limitations of local storage, enabling easier access and collaboration across teams [13].

Table 2. Fluorescence study of selected medicinal plants.

Study	Authors	Reagent used	Reference
Large-scale CCUS deployment in India	Ruchika Tanwar, Dipesh, Anubha Kaushik	Policy insights into low-carbon pathways, infrastructure development	[14]
AI-enhanced CCUS for CO ₂ Mitigation	Honghao Chen, Yingzhe Zheng	AI-driven optimization for CO ₂ capture processes, nanomaterial applications	[6]
CCUS Enhanced Oil Recovery (EOR)	Narendra N. Dalei, Jignesh Joshi	CO ₂ injection techniques for EOR in Indian oil refineries, economic viability analysis	[15]

- *Data visualization tools—Power BI and Tableau:* These modern visualization tools offer interactive and intuitive dashboards that make data insights more accessible to stakeholders. They surpass traditional reporting methods by allowing users to explore data dynamically and quickly to derive actionable insights.
- *Machine learning and AI frameworks—TensorFlow and PyTorch:* These frameworks support the development of sophisticated machine learning models that can analyze complex datasets. They improve upon older algorithms by providing flexibility and scalability, thus enabling deeper insights and more accurate predictions.
- *Model development and deployment—Jupyter Notebook:* This tool enhances collaboration among data scientists by providing an interactive platform for coding, visualizing, and sharing results. This streamlines the development process compared with more rigid traditional coding environments [16]. The fluorescence of the selected medicinal plants is shown in Table 2.
- *Simulation and modeling Multiphysics:* This advanced simulation software allows for the detailed modeling of physical processes, improving the accuracy of predictions over simpler models. This helps in understanding the intricate interactions within CCUS technologies [10, 17,18].

CONCLUSION

The integration of AI with carbon capture technology in CCSL projects showcases an innovative and scalable approach to address industrial CO₂ emissions. By deploying an advanced machine learning-driven platform, CCSL not only optimizes the carbon capture process in real-time but also provides a model that can be adopted across various high-emission sectors, such as steel and cement production. This solution addresses both the economic and environmental challenges inherent in traditional carbon capture technologies, offering a pathway for sustainable, low-cost emission management. The CCSL's use of data-driven decision-making enhances the reliability and efficiency of carbon capture processes. Predictive and prescriptive analytics provide precise automated control over capture rates, maintenance, and energy consumption, ensuring that the system remains cost-effective and energy efficient. By overcoming key challenges, such as ensuring data quality, model interpretability, and real-time responsiveness, CCSL's solution addresses the limitations that have previously hindered CCUS technologies. With data cleaning and sensor calibration, explainable AI techniques for transparency, and Edge AI for low-latency processing, the CCSL platform represents a major advancement in achieving reliable and adaptable carbon capture.

In summary, the CCSL's AI-driven CCUS solution is a pioneering example of how advanced technologies can create impactful solutions for climate change mitigation. By reducing CO₂ emissions effectively and affordably, CCSL contributes significantly to a sustainable future, offering a robust framework for industries worldwide to meet their emission-reduction goals.

Declaration of Interest

The authors hereby declare that there are no conflicts of interest related to the publication of this manuscript, "Technology Innovations to Resist Climate Action." The work presented is solely the result of academic research conducted without any financial or personal interests that could influence the content or validity of the findings. All authors have reviewed and approved the final version of the manuscript and collectively affirm the integrity of the research process and the accuracy of the data presented.

Acknowledgment

The authors declare that there are no conflicts of interest associated with the publication of this manuscript, “Technology Innovations to Resist Climate Action.” This work represents our genuine academic effort and is free from any financial or personal interests that might have influenced our research or its outcomes. We stand by the integrity of our work and the accuracy of our findings. Each of us reviewed and approved the final manuscript, with a shared commitment to advancing knowledge in this important field.

REFERENCES

1. Hanifa M, Agarwal R, Sharma U, Thapliyal PC, Singh LP. A review on CO₂ capture and sequestration in the construction industry: Emerging approaches and commercialised technologies. *J CO₂ Util.* 2023;67:102292. doi:10.1016/j.jcou.2022.102292.
2. Bhatt Y, Kamboj P, Roychoudhury J. Enabling the progress of the circular carbon economy: India’s approach to CCUS [online]. Riyadh: King Abdullah Petroleum Studies and Research Center; 2023. p. 1–17. Available from: <https://www.kapsarc.org/research/publications/enabling-the-progress-of-the-circular-carbon-economy-indias-approach-to-ccus/>
3. Sabeena J. Enhancing carbon capture, utilization, and storage (CCUS) through AI-enabled CNN and Bayesian networks. In: 2023 International Conference on Sustainable Communication Networks and Application (ICSCNA); 2023 Dec 16–17; Theni, India. IEEE; 2023. p. 1547–51. doi:10.1109/ICSCNA58489.2023.10370286.
4. Peres CB, Resende PMR, Nunes LJR, Morais LC. Advances in carbon capture and use (CCU) technologies: A comprehensive review and CO₂ mitigation potential analysis. *Clean Technol.* 2022;4:1193–207. doi:10.3390/cleantechnol4040073.
5. Fu L, Ren Z, Si W, Ma Q, Huang W, Liao K, et al. Research progresses on CO₂ capture and utilization technology. *J CO₂ Util.* 2022;66:102260. doi:10.1016/j.jcou.2022.102260.
6. Chen H, Zheng Y, Li J, Li L, Wang X. AI for nanomaterials development in clean energy and carbon capture, utilization and storage (CCUS). *ACS Nano.* 2023;17:9763–92. doi:10.1021/acsnano.3c01062. PMID: 37267448.
7. Singh N, Farina I, Petrillo A, Colangelo F, De Felice F. Carbon capture, sequestration, and usage for clean and green environment: Challenges and opportunities. *Int J Sustain Eng.* 2023;16:248–68. doi:10.1080/19397038.2023.2256379.
8. Yan Y, Borhani TN, Subraveti SG, Pai KN, Prasad V, Rajendran A, et al. Harnessing the power of machine learning for carbon capture, utilisation, and storage (CCUS) – A state-of-the-art review. *Energy Environ Sci.* 2021;14:6122–57. doi:10.1039/D1EE02395K.
9. Gabrielli P, Gazzani M, Mazzotti M. The role of carbon capture and utilization, carbon capture and storage, and biomass to enable a net-zero-CO₂ emissions chemical industry. *Ind Eng Chem Res.* 2020;59:7033–45. doi:10.1021/acs.iecr.9b06579.
10. Madejski P, Chmiel K, Subramanian N, Kuś T. Methods and techniques for CO₂ capture: Review of potential solutions and applications in modern energy technologies. *Energies.* 2022;15:887. doi:10.3390/en15030887.
11. Liu E, Lu X, Wang D. A systematic review of carbon capture, utilization and storage: Status, progress and challenges. *Energies.* 2023;16:2865. doi:10.3390/en16062865.
12. Xu J. Research progress in CO₂ capture technology. *Highl Sci Eng Technol.* 2023;73:345–50. doi:10.54097/hset.v73i.13099.
13. Bhavsar A, Hingar D, Ostwal S, Thakkar I, Jadeja S, Shah M. The current scope and stand of carbon capture storage and utilization ~ A comprehensive review. *Case Stud Chem Environ Eng.* 2023;8:100368. doi:10.1016/j.csee.2023.100368.
14. Gupta NC, Tanwar R, Dipesh A, Kaushik A, Singh R, Patra AK, et al. Perspectives on CCUS deployment on large scale in India: Insights for low carbon pathways. *Carbon Capture Sci Technol.* 2024;12:100195. doi:10.1016/j.ccst.2024.100195.
15. Dalei NN, Joshi J. Potential matching of carbon capture storage and utilization (CCSU) as enhanced oil recovery in perspective to Indian oil refineries. *Clean Technol Environ Policy.* 2022;24:2701–17. doi:10.1007/s10098-022-02359-1. PMID: 35846986.

16. Yu X, Catanescu CO, Bird RE, Satagopan S, Baum ZJ, Lotti Diaz LM, et al. Trends in research and development for CO₂ capture and sequestration. *ACS Omega*. 2023;8:11643–64. doi:10.1021/acsomega.2c05070. PMID: 37033841.
17. Shaw R, Mukherjee S. The development of carbon capture and storage (CCS) in India: A critical review. *Carbon Capture Sci Technol*. 2022;2:100036. doi:10.1016/j.ccst.2022.100036.
18. Hochman G, Appasamy V. The case for carbon capture and storage technologies. *Environments*. 2024;11:52. doi:10.3390/environments11030052.