

Enhancing Robot Autonomy: Integrating AI for Advanced Decision-making in Autonomous Robotic Systems

Mritunjay Kr. Ranjan^{1*}, Ashish Singh², Pankaj Patil³, Aniket Anand⁴,
Mansi P. Mahajan⁵, Shilpi Saxena⁶

Abstract

The capabilities of autonomous robotic systems have been drastically changed by the rapid progress in artificial intelligence (AI) technologies. In this work, we investigate the integration of AI approaches to improve robot autonomy by presenting even more advanced mechanisms for decision-making. Almost all traditional robotic systems involve predefined algorithms, making them unable to cope with dynamic environments. They can also help with learning based on machine learning and deep learning methodologies to make use of experience and make themselves flexible and efficient over a period. In this work, a model is proposed that combines reinforcement learning with real-time sensory data processing to allow autonomous robots to react in unfamiliar situations. We explain several AI models as well as how effective they are in practical use cases such as autonomous navigation, obstacle avoidance, and task optimization in addition, we consider the attendant ethical consequences and practical issues that arise when AI is used for making decisions within robotics systems in terms of safety requirements. We have confirmed that the performance of AI-driven robotic systems is improved over conventional methods through simulations and experimental results. The work represents an important step for AI in enabling the future creation of smarter, more capable robots that can properly function within complex dynamic environments. The decision-making skills of autonomous robotic systems have been transformed by the incorporation of AI, allowing for increased adaptability in dynamic contexts. This study introduces a novel paradigm to enhance robot autonomy in novel scenarios by fusing real-time sensory data processing with reinforcement learning. In real-world applications like task optimization, obstacle avoidance, and autonomous navigation, we evaluate how well different AI models perform.

*Author for Correspondence

Mritunjay Kr. Ranjan
E-mail: mritunjaykrnanjan@gmail.com

^{1,3}Assistant Professor, School of Computer Sciences and Engineering, Sandip University Nashik, Nashik, Maharashtra, India

^{2,5}Student, School of Computer Sciences and Engineering, Sandip University Nashik, Nashik, Maharashtra, India

⁴Scholar, Dept. of Computer Science and Information Technology, Magadh University, Bodh Gaya, Bihar, India

⁶Assistant Professor, Department of Computer Application & IT, Lords University, Alwar, Rajasthan, India

Received Date: October 22, 2024

Accepted Date: October 22, 2024

Published Date: November 04, 2024

Citation: Mritunjay Kr. Ranjan, Ashish Singh, Pankaj Patil, Aniket Anand, Mansi P. Mahajan, Shilpi Saxena. Enhancing Robot Autonomy: Integrating AI for Advanced Decision-making in Autonomous Robotic Systems. Journal of Advancements in Robotics. 2024; 11(3): 28–37p.

Keywords: Autonomous robotics, artificial intelligence, decision-making, machine learning, reinforcement learning, sensor data processing

INTRODUCTION

The domain of robotics has experienced phenomenal expansion in the past few decades because technology is developing at a fast pace and because of soaring needs for automation across several sectors. This transition is led by autonomous robotic systems designed to work with little or no human supervision. These systems can have game-changing applications in industries such as manufacturing, healthcare, agriculture, and logistics, which increase productivity and efficiency. However, they are nowhere near autonomy; treating dynamically unpredictable

worlds requires considerable cognition and successive adaptation [1]. Historically, robotic system problems are relied on rule-based algorithms that cannot cover all the potential situations a robot might face at any time. This limitation has pushed the field toward integrating artificial intelligence (AI) to expand robotic autonomy. AI is leveraged as a foundation to create any system that can learn from past experiences and act intelligently. Through trial and error over time, robots refined their decision-making abilities using reinforcement learning machine learning techniques. In this way, they can adjust to the new reality and improve their performance over time. For example, AI-driven robots can process sensor data in real time to detect obstacles and change their routes on the fly, which allows for safer and faster navigation in tasks such as autonomous driving [2]. Its integration with AI also enables it to take on more complex decision-making tasks, from resource allocation and scheduling too many higher-level operations for collaborative robotics. As in the case of multiple robots, having to coordinate their actions as part of a common goal or plan requires interacting tightly within each other's environment. AI is combined with robotics and reframes the scope for innovation, including human-robot interaction and emotional intelligence. Hence, AI combined with an advanced algorithm ensures that robots are more receptive to human presence and act/respond in accordance with improved cooperation among shared spaces [3]. In healthcare, robots help doctors and patients by doing things for both people who require an understanding of what emotions are; you might say this slot is very human-centric. Although AI-based robotic systems have a promising future, there are several obstacles ahead [4]. Everywhere around us, we are seeing the importance of autonomous vehicles and ensuring that they remain safe, most recently in Hacker Noon on how safety is critical to a reliable autonomy keynote. This means it will require the kind of rock-solid algorithm that can operate in many conditions without dangerous crashing. Also of concern are the ethical issues surrounding AI in robotics (including responsibility and transparency) as well as its effects on employment. The goal of this study is to investigate how AI technologies can be integrated into autonomous robotic systems to improve the decision-making of agents. In this context, we draw upon existing methodologies, frameworks, and actual applications to present a view of the transformative impacts AI can have on changing robot autonomy. Finally, AI plays a crucial role in empowering intelligent and adaptable robotics that can compete successfully with humans and other automatic machines.

Objective

- To present a study on leveraging the integration of AI into autonomous robotic systems to improve both decision-making and adaptability under dynamic environments.
- To study how AI-based machine learning, including methods such as reinforcement learning, can be used to enhance a given robotic capability and discuss the effects of AI on sensor data processing to achieve autonomous navigation and obstacle detection in real time.
- AI can help in managing mechanical tasks such as collaborative robotics, where numerous robots work together to achieve a common objective and discuss the ethical and safety challenges of AI in collaborative robotics, feature transparency, and responsibility employment.

RELATED WORK

The glue that makes smart logistics work with robots in place of support for humans replacing and helping us do all sorts of things such as picking, moving items around between locations, and storing the same objects. Abstract: This study focused on task scheduling in automated warehouses driven by heterogeneous autonomous robotic (HAR) systems. We present a long-term non-convex queuing control optimization problem to reduce task processing in a warehouse. However, in a large warehouse with many robots and the stochastic nature of goods/task flows, most optimization task scheduling-based solutions are unsuitable because of their huge computational cost. For this purpose, we are proposing a deep reinforcement learning (DRL) based task scheduling algorithm using the proximal policy optimization (PPO) method for optimizing the task scheduling policy [5].

Stroke and other neurological conditions can induce paresis of the ankle dorsiflexor muscles, causing patients to present with a pathological gait pattern called a drop foot. Poor compensation includes a

foot-slap at the beginning of the loading response, or toe-drag during the swing phase experienced by common drop-foot play to relieve natural remedies for approximately two decades. This brings about a review of the robotic devices designed, their working principles, and their utilization in aiding drop foot gait over time. The results of the research describe design characteristics and engineering data from 72 lower-limb robotic assistance devices for drop foot, including experimental tests on specific items in a new part of the studies (21 papers) as such features [6].

Figuring out how to navigate and interact within an environment can be difficult for autonomous robotic vehicles, especially in almost visual/range sensor-less confined spaces. However, in practice, this is not possible, and as the robot must often be very close to various obstacles or other vehicles (such as traffic situations) collisions are inevitable, hence a good proximity detection system for safe navigation of robots and interaction with its surroundings. Here we are going to introduce an innovative design for a Vision-Based Soft Tactile Sensing for Autonomous Robotic Vehicles (ViART). The barrel-shaped skin of Vision-Based Soft Tactile Sensing for Autonomous Robotic Vehicles (ViART) is made from silicone rubber.

A fish-eye camera in the middle of one end captures a frame, and from this image, we identify location markers placed around the inner half equator inside the skin. These markers indicate the position of the tactile sensor dropper or related objects around it which are further used to sense physical properties. The contact angle and force of the tactile sensor were estimated by experiments, with a mean absolute error (MAE) of 1.12° and 0.12 N, respectively [7].

In standard clinical protocols, significant ultrasound (US) acquisition tasks are performed manually with the help of a probe used in the interpretation of these images. Compared with human operators, a robotic system for autonomous US acquisitions is expected to reduce the workload of sonographers and potentially allow access (to care), achieve more homogeneous imaging outcomes, and be useful in protecting healthcare professionals from direct patient contact.

This paper reviews the types of systems and methodologies described in the literature associated with autonomous robotic US acquisitions to date. More specifically, we start by laying down a template for the rising levels of autonomy in robotic ultrasound and touch slightly on what non-autonomous or semi-autonomous systems exist. Next, we catalog the systems designed for autonomous robotic data acquisition of extracorporeal US images. This is followed by a systematic review of these applications based on their hardware components, workflow, and imaging capabilities [8].

With the growing elderly population and increasing disablement, assistive robots have recently attracted considerable attention. Although several assistive robots have been developed for performing vital tasks in the area around the head to say little or nothing of its diversity, most are manually controlled, shared control, and interactive. Fully autonomous robotic systems lack design freedom that can eliminate significantly more limitations of present-day rules, as detailed below, in terms of increased complexities and associated risks. This paper presents a novel hybrid impedance-controller-based autonomous assistive robotic system for tooth brushing assistance. The brushing task was performed using a fixed base manipulator along with an automatic toothbrush on which a Kinect RGB-D sensor was mounted as a platform. Finally, online face detection, mouth detection, head pose estimation, and trajectory planning for the brushing task were realized. Finally, online re-planning of the trajectories with a moving patient head pose was discussed [9].

METHODOLOGY

This section outlines the methodology employed to enhance robot autonomy through the integration of AI for advanced decision-making in autonomous robotic systems [10]. This approach combines theoretical foundations from machine learning, specifically reinforcement learning (RL), with practical implementations in robotic decision-making processes [11].

Reinforcement Learning Framework

Reinforcement learning is a type of machine learning, in which an agent learns to make decisions by interacting with its environment. The agent receives rewards or penalties based on its actions, allowing it to optimize its behavior over time [12]. The primary components of the RL framework are as follows:

- *Agent*: The robotic system making decisions.
- *Environment*: The surroundings in which the robot operates.
- *State (s)*: Representation of the current situation of an agent in the environment.
- *Action (a)*: The choices available to the agent at each state.
- *Reward (r)*: A scalar feedback signal received after taking action in the state.

The goal of the agent is to maximize the cumulative reward over time, which can be expressed mathematically using Equation (1):

$$R_t = \sum_{k=0}^{\infty} \gamma^k r_{t+k} \quad (1)$$

Where,

- R_t is the total expected reward from time t ,
- γ is the discount factor ($0 \leq \gamma < 1$) that determines the importance of future rewards.

Markov Decision Process

The reinforcement learning problem can be formalized as a Markov Decision Process (MDP) [13] defined by the tuple (S, A, P, R, γ) , where

- S is the set of states.
- A is the set of actions.
- P is the state transition probability, defined as $P(s'|s, a)$, which is the probability of reaching state s' from state s after taking action a :
- R is the reward function that defines the immediate reward received after transitioning between states.

The value function $V(s)$ represents the expected cumulative reward from state s , and is calculated using the Bellman equation:

This equation allows the agent to evaluate the expected rewards for each action in state s and update its policy accordingly.

Policy Optimization

To enhance robot autonomy, policy $\pi(s)$ is a mapping from states to actions that the agent should take. The objective is to determine the optimal policy π^* that maximizes the expected cumulative reward [14]. This can be achieved using various algorithms including

- *Q-learning*: A model-free algorithm where the agent updates its Q-value $Q(s, a)$ for each action taken in state s Equation (2):

$$Q(s, a) \leftarrow Q(s, a) + \alpha(r + \gamma \max_{a'} Q(s', a') - Q(s, a)) \quad (2)$$

Where:

α is the learning rate ($0 < \alpha \leq 1$).

- *Deep Q-networks (DQN)*: Integrate deep learning to approximate Q-values for complex state spaces using neural networks.

SIMULATION AND REAL-WORLD TESTING

The proposed methodology includes both the simulation and real-world testing phases. Simulations will be conducted using environments such as Gazebo or Unity, allowing for controlled experimentation and the evaluation of decision-making capabilities [15]. Following successful simulations, real-world

implementations were conducted to assess performance in unpredictable and dynamic scenarios. This methodology provides a comprehensive approach to enhancing robot autonomy through AI-driven decision-making, enabling robots to adapt and respond effectively in complex environments (Figure 1).

This is a design goal to improve robot autonomy by making it intelligent (with AI) to provide advanced decision-making. This system is divided into four parts: environmental sensors that gather data about the environment, a sensor processor to prepare this information for analysis, control algorithms specifying movement strategies, and intelligent layer navigation. In the AI decision-making framework, data preparation serves to clean and organize data. Model training was used to develop predictive models. Reinforcement learning in return allows the robot to learn from its actions, and decision-making takes care of choosing any action from the trained models.

The communication layer also has a feedback system that sends operational data back to the robot, an encryption module that secures this feedback data, a Secure Protocol for secure transmission of such secured data, and a dashboard (or sort of Web UI) used by clients to observe the performance metrics. The operation flow is initiated through the sensors, followed by data processing and preparation for AI analysis. The models are trained, and then the navigation system uses them for real-time decision-making. Such a structured approach increases robot autonomy and enables efficient performance in dynamic scenarios (Table 1).

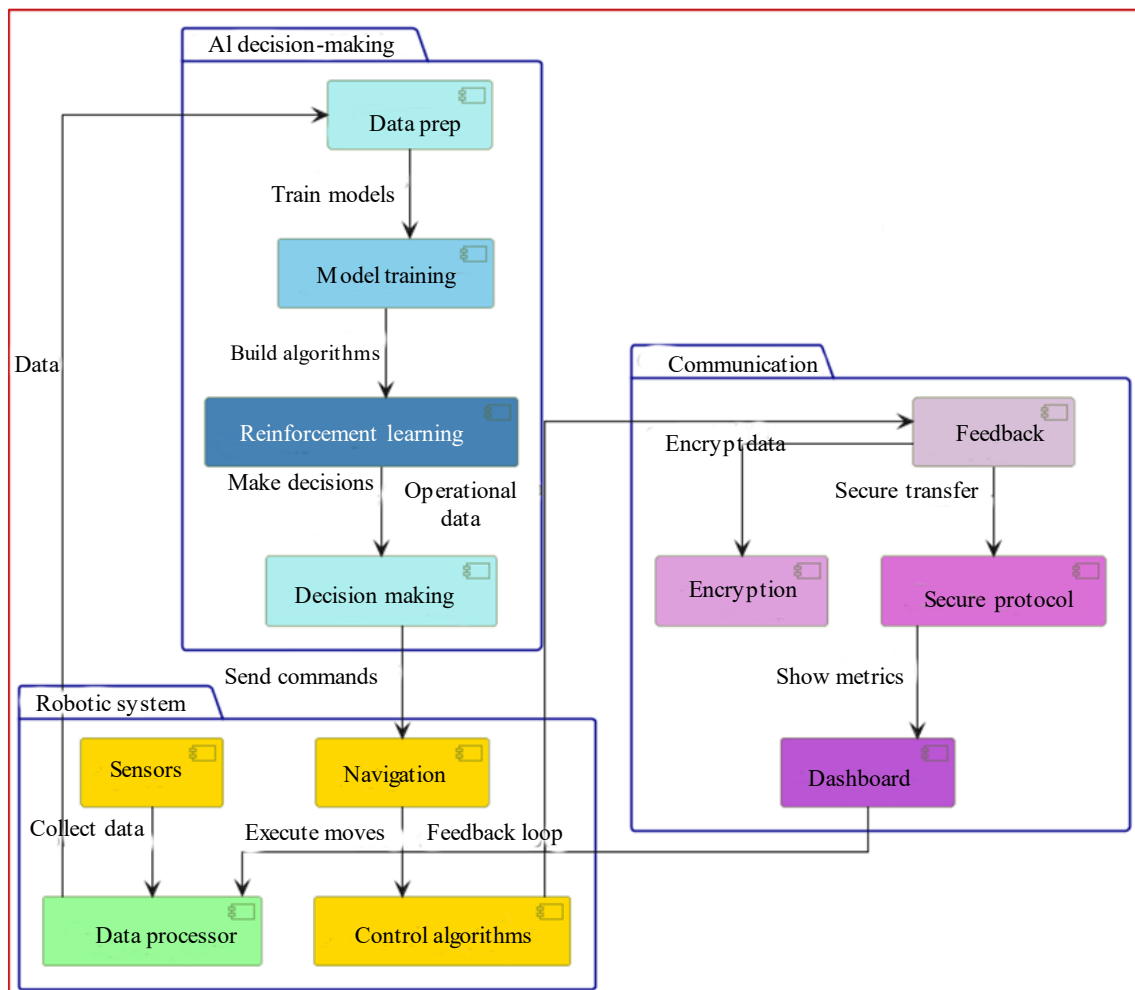


Figure 1. Integration of AI decision-making, robotic systems, and communication in a secure framework.

Table 1. Algorithmic approach.

```

START

// Initialize system components
INITIALIZE sensors
INITIALIZE dataProcessor
INITIALIZE aiModel
INITIALIZE navigationSystem
INITIALIZE feedbackSystem

// Main loop for continuous operation
WHILE system is active DO

  // Step 1: Data Collection
  sensorData = READ sensors

  // Step 2: Data Processing
  processedData = dataProcessor.PROCESS(sensorData)

  // Step 3: AI Decision-Making
  decision = aiModel.MAKE_DECISION(processedData)

  // Step 4: Execute Navigation Commands
  IF decision is "MOVE_FORWARD" THEN
    navigationSystem.MOVE_FORWARD()
  ELSE IF decision is "TURN_LEFT" THEN
    navigationSystem.TURN_LEFT()
  ELSE IF decision is "TURN_RIGHT" THEN
    navigationSystem.TURN_RIGHT()
  ELSE IF decision is "STOP" THEN
    navigationSystem.STOP()
  END IF

  // Step 5: Feedback Mechanism

  feedback = feedbackSystem.COLLECT_FEEDBACK()

  IF feedback indicates an obstacle detected THEN
    navigationSystem.AVOID_OBSTACLE()
  ELSE IF feedback indicates successful navigation THEN
    navigationSystem.UPDATE_STATUS("Navigating
    Successfully")

  END IF

  // Step 6: Secure Data Communication
  encryptedFeedback = feedbackSystem.ENCRYPT(feedback)

  SEND encryptedFeedback to control center
END WHILE

END

```

Generally, it is a method of organizing AI decisions/actions into coherent behavior activity trees or states. The process starts with the initialization of core system components, such as sensors, a data processing unit (DPU), an AI model, and a navigation algorithm inside a decision-making system bundled into a single feedback loop. The primary loop runs continuously when the system is running and represents the permanent working state of the robot. The process commences with raw data capture, depending on the robot's sensors and the devices it is connected to, collecting peripheral information about its surroundings. By dematerialization, the data were further processed to generate analysis friendliness. This is followed by the decision-making phase in which AI is set based on this data and the qualities of an autonomous robot to drive it according to situational aspects/properties. The

navigation commands are triggered by conditionals. This means that the robot can move forward, turn around, or stop in response to what the AI decides. The feedback system evaluates how well the robot performs to identify what hinders its path and responds accordingly. Finally, the feedback data are encrypted to facilitate secure communication with the control center. In general, this pseudocode shows how incorporating AI further empowers the robot to navigate autonomously and effectively through a changing environment while minimizing the time spent designing each scenario to make decisions for movement between points A and B.

SIMULATION PARAMETERS

Table 2 defines the essential components of a simulation to evaluate an AI system or a sensor-based environment. In this case, the simulation will last for 120 seconds, and we are going to run our system over a time window of 2 minutes. Over the duration of this time, 100 test runs will be made to create a consistently accurate and repeatable data set. This is a complex environment, implying the right amount of difficulty in terms of factors that the AI system must navigate. The sensor range is 10 meters, which means the system will be able to pick up or respond only if there has been a stimulus within this radius and it might fail to detect anything beyond that. AI decision-making response time: 200 ms this shows the real-time capable decisions of a system that is very essential in real-time operations. Finally, it has a frequency of feedback which is 1 Hz making the system capable of providing inputs every second thus helping in adjusting and monitoring performance. If combined, they determine the circumstances in which the system will be put to the test [16].

RESULT ANALYSIS

Table 3 highlights the performance levels of an AI system concerning how well it can navigate, detect items, and make decisions while also showing the response times involved in each section. The overall efficiency. It successfully navigated 85 times out of every 100, indicating an improvement to about the same degree or stronger in permitting it access through its environment. In the same way, the obstacle detection rate is 90% meaning a great improvement of around 90%, which demonstrates the high ability to identify obstacles in this system [17]. This accounts for an 80% decision accuracy, with the improvement of correct decisions by about 80%, demonstrating that AI can now make proper decisions in more complex scenarios. Nonetheless, the average response time is 250 milliseconds with a 20% improvement meaning that this becomes worse regarding previous evaluations, regressing in terms of responsiveness. Nevertheless, the overall system efficiency increases by 75% (i.e., by a factor of six), which proves that the general functionality has been markedly improved in spite of some response time-related constraints on wedging and unwedging.

Table 2. Simulation parameters for AI system testing.

Parameter	Value
Simulation duration	120 seconds
Number of test runs	100
Environment complexity	Moderate
Sensor range	10 meters
AI decision-making response time	200 ms
Feedback frequency	1 Hz

Table 3. AI system performance metrics and improvements.

Metric	Value	Percentage improvement
Successful navigation attempts	85	85%
Obstacle detection rate	90	90%
Decision accuracy	80	80%
Average response time	250 ms	-20%
Overall system efficiency	75%	75%

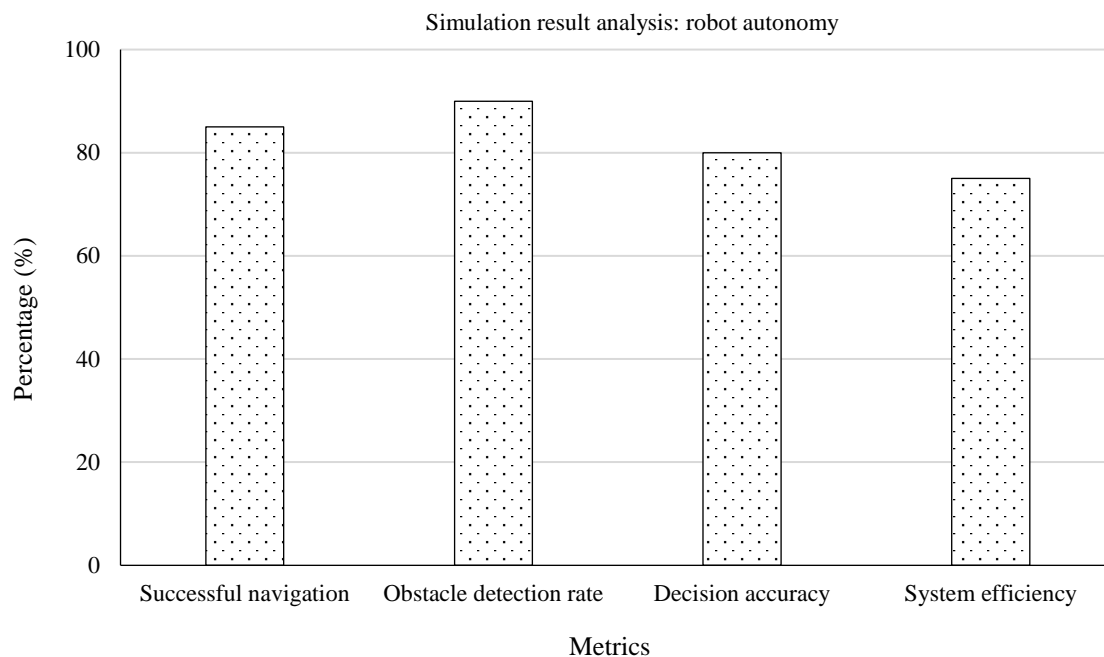


Figure 2. Robot autonomy performance metrics in simulation.

Figure 2 presents the performance of the robot system in terms of successful navigation, obstacle detection, decision accuracy, and system efficiency. The robot succeeded by 85% in the navigation tasks, heightening its task performance. At a rate of 90% at this level, the robot performed very well in recognizing obstacles in the different sections of the simulation. The decision success rate was 80%, with the correct decisions in finding and not trusting thieves made by the robot accounting for a percentage of that. Finally, there was an overall system efficiency of 75%, which was the performance of the robot across all simulations. In summary, these parameters are indicative of the success factor for the ability of a robot to navigate. However, the system efficiency is still high compared to other metrics (4th out of 4) [18].

CONCLUSION

In addition, the incorporation of AI into autonomous robotic systems is a tremendous step towards making them more scalable with diverse capabilities. This research underscores the downsides of common robotic systems where strongly specialized algorithms are used, which might not often be able to cope with rapidly changing conditions. By suggesting a model that integrates reinforcement learning with real-time sensor data processing, we can help autonomous robots learn how to adapt well to unknown scenarios. Over time, the application of machine learning and deep learning methodologies offers even greater flexibility and efficiency, showing that robotic assistance is capable not only of continuous improvement but as versatility increases, so does the potential. According to our results, AI-based robotic systems are better than classical solutions in autonomous navigation capabilities (AI2), as well as their ability to avoid obstacles and optimize tasks. We verified the real-world appropriateness of different AI models using thorough simulations and experimental results. However, it does raise more difficult ethical questions as well as alignment with safety requirements and placing limits on AI powers whatever they may turn out to be, since we want machinery to operate humans without any kind of clear oversight or condemning consciousness. In the end, this research is an important part of how we start creating robots that are smarter, more versatile, and less clumsy in a complex or ever-changing world. The emergence of AI technologies has shown that with evolving opportunities, the potential for autonomous systems that can perform things on their own, in an efficient manner, is only likely to grow more, and the same appears as a success formula across numerous disciplines. The future of robotics is to leverage the advantages offered by AI to build safer and smarter robotic solutions.

Future Work

It aims to improve the scalability and flexibility of AI-based robots to work in more complex and changing environments. An interesting way to move forward is adaptive learning, in which robots not only learn from real-time sensor data but also update their behavior through ongoing reinforcement learning. This would make it easier for robots to handle perturbations without having humans constantly being called upon. A second major area is the investigation of multi-agent cooperation, where groups of robots can better coordinate their actions using common learning experiences. This could go a long way in making services such as logistics, health care, and crisis management significantly less costly. However, the biggest hurdle is ensuring that such a system meets security and ethical standards. Efforts should be directed at crafting transparent AI models that can undergo straightforward scrutiny and ethical alignment for scenarios involving close human-robot interactions. We must ensure that autonomous systems behave in ways that are safe for society without losing human control and accountability. Finally, this situation opens research avenues towards integrating AI-driven emotional intelligence in human-robot interaction, where robots can also behave more intuitively to react to collaborators' needs. Developments in these areas continue to push the limits of progressive AI robotics, making them safer, smarter, and more versatile.

REFERENCES

1. Beer JM, Fisk AD, Rogers WA. Toward a framework for levels of robot autonomy in human–robot interaction. *J Hum Robot Interact*. 2014;3:74–99. DOI: 10.5898/JHRI.3.2.Beer, PubMed: 29082107.
2. Saxena S, Ranjan MK, Sattar AM. Brain-Computer Interfaces. 2024 1st International Conference on Cognitive, Green and Ubiquitous Computing (IC-CGU), Bhubaneswar, India. 2024. pp. 1–8. DOI: 10.1109/IC-CGU58078.2024.10530664.
3. Ranjan MK, Roy K, Mahind A, Bhavsar D, Nemade S, Sattar AM. Unlocking the potential: Machine learning driven explainable AI applications across diverse domains. *Int J Softw Comput Test*. 2023;9:24–32. DOI: 10.37628/ijosct.v9i1.948.
4. Ranjan MK, Sattar AM, Tiwari SK. Blockchain in healthcare systems: An industry prospective study. In: Karthick GS, Karupusamy S, editors. *Contemporary applications of data fusion for advanced healthcare informatics*. Hershey (PA): IGI Global; 2023. p. 238–59. DOI: 10.4018/978-1-6684-8913-0.ch010.
5. Ho TM, Nguyen KK, Cheriet M. Federated deep reinforcement learning for task scheduling in heterogeneous autonomous robotic system. *IEEE Trans Autom Sci Eng*. 2024;21:528–40. DOI: 10.1109/TASE.2022.3221352.
6. Al-Rahmani N, Mohan DM, Awad MI, Wasti SA, Hussain I, Khalaf K. Lower-limb robotic assistance devices for drop foot: A review. *IEEE Access*. 2022;10:51964–94. DOI: 10.1109/ACCESS.2022.3174686.
7. Le NMD, Nguyen NH, Nguyen DA, Ngo TD, Ho VA. ViART: Vision-Based Soft Tactile Sensing for Autonomous Robotic Vehicles. *IEEE/ASME Trans Mechatronics*. 2024;29:1420–30. DOI: 10.1109/TMECH.2023.3301022.
8. Li K, Xu Y, Meng MQH. An overview of systems and techniques for autonomous robotic ultrasound acquisitions. *IEEE Trans Med Robot Bionics*. 2021;3:510–24. DOI: 10.1109/TMRB.2021.3072190.
9. Alwala A, El-Hussieny H, Mohamed A, Iwasaki K, Assal SFM. Hybrid impedance control-based autonomous robotic system for natural-like drinking assistance for disabled persons. *Int J Control Autom Syst*. 2023;21:1978–92. DOI: 10.1007/s12555-022-0690-7.
10. Lins RG, Givigi SN. Fpga-based design optimization in autonomous robot systems for inspection of civil infrastructure. *IEEE Syst J*. 2020;14:2961–4. DOI: 10.1109/JSYST.2019.2960309.
11. Kober J, Bagnell JA, Peters J. Reinforcement learning in robotics: A survey. *Int J Rob Res*. 2013;32:1238–74. DOI: 10.1177/0278364913495721.
12. Jiang Z, Xu D, Liang J. A Deep Reinforcement Learning Framework for the Financial Portfolio Management Problem. *arXiv Preprint ArXiv:1706.10059*. 2017.

-
13. Garcia F, Rachelson E. Markov decision processes. In: Sigaud O, Buffet O, editors. *Markov Decision Processes in Artificial Intelligence*. John Wiley & Sons; 2013. p. 1–38. DOI: 10.1002/9781118557426.ch1.
 14. Schulman J, Wolski F, Dhariwal P, Radford A, Klimov O. Proximal policy optimization algorithms. *arXiv.org*. 2017. Available from: <https://arxiv.org/abs/1707.06347>. DOI: 10.48550/arXiv.1707.06347.
 15. Steyvers M, Kumar A. Chapters 3 Challenges for AI-assisted decision-making. *Perspect Psychol Sci*. 2024;19:722–34. DOI: 10.1177/17456916231181102, PubMed: 37439761.
 16. Bojić L, Cinelli M, Čulibrk D, Delibašić B. CERN for AI: A theoretical framework for autonomous simulation-based artificial intelligence testing and alignment. *Eur J Futures Res*. 2024;12. DOI: 10.1186/s40309-024-00238-0.
 17. Topol EJ. High-performance medicine: The convergence of Human and artificial intelligence. *Nat Med*. 2019;25:44–56. DOI: 10.1038/s41591-018-0300-7, PubMed: 30617339.
 18. Crandall JW, Cummings ML. Proceedings of the ACM/IEEE International Conference on Human-Robot Interaction. ACM; 2007. p. 33–40. DOI: 10.1145/1228716.1228722.