

AI-Driven Framework for Accelerating Polymer Nanocomposite Commercialization in Computational Materials Engineering

M. Sukanya^{1*}, Bantupalli Nagalakshmi², D. Shobana³, V. Parimala⁴, S. Ahamed Ali⁵, K. Muthukannan⁶, A. Thilagavathy⁷

Abstract

The remarkable mechanical strength increased functional qualities, lightweight structure, and thermal stability of polymer nanocomposites have prompted modern materials research to prioritize their rapid commercialization. Advanced materials can be created by adding nanoscale fillers such as carbon nanotubes, graphene, silica, and metal oxides to polymer matrices. These materials have applications in biomedical engineering, aerospace, electronics, packaging, and automobile manufacture. Research and development of polymer nanocomposites has traditionally relied on costly and time-consuming trial-and-error approaches, which are impractical for use in industrial settings. To get beyond these limitations, AI has revolutionized the material optimization, commercialization, and discovery processes. The mechanical, thermal, and functional properties of polymer nanocomposites are predicted by our AI system through the use of machine learning techniques, material composition, processing parameters, and performance statistics. Learn about intricate interactions between nanofiller and polymer by employing ANNs, SVMs, and RLNs. Experimental work, development time, and manufacturing expenses can all be saved with quick predictions of ideal material configurations. Artificial intelligence identifies cost-effective, high-performance, and trustworthy material compositions for scalable manufacturing. The results show that the development of polymer nanocomposite is more accurate, efficient, and innovative when using AI-based predictive modeling. Intelligent, data-driven materials engineering has shifted the focus from experimentation to the rapid commercialization and widespread application of next-generation polymer nanocomposites.

*Author for Correspondence

M. Sukanya

¹Associate Professor, Department of Computer Science and Engineering, Kathir College of Engineering, Coimbatore, Tamil Nadu, India

²Assistant Professor, Department of Computer Science and Engineering, Ravindra College of Engineering for Women, Kurnool, Andhra Pradesh, India

³Assistant Professor, Department of Electronics and Communication Engineering, Saveetha School of Engineering, Saveetha Institute of Medical and Technical Sciences (SIMATS), Saveetha University, Chennai, Tamil Nadu, India

⁴Assistant Professor, Department of Electronics and Communication Engineering, Chennai Institute of Technology, Tamil Nadu, India

⁵Assistant Professor, Department of Computer Science and Engineering, Easwari Engineering College, Chennai, Tamil Nadu, India

⁶Associate Professor, Department of Computer Science and Engineering, Vel Tech MultiTech Dr Rangarajan Dr Sakunthala Engineering College, 42, Vel Tech Road, Vel Nagar, Avadi, Chennai, Tamil Nadu, India

⁷Associate Professor, Department of Computer Science and Engineering, R.M.K Engineering College, RSM Nagar, Kavaraipetta, Tamil Nadu, India

Received Date: April 09, 2026

Accepted Date: April 24, 2026

Published Date: May 05, 2026

Citation: M. Sukanya, Bantupalli Nagalakshmi, D. Shobana, V. Parimala, S. Ahamed Ali, K. Muthukannan, A. AI-Driven Framework for Accelerating Polymer Nanocomposite Commercialization in Computational Materials Engineering. Journal of Polymer & Composites. 2026; 14(3): 1–19p.

Keywords: Polymer Nanocomposites, Machine Learning, Materials Informatics, Materials Commercialization, Property Prediction, Artificial Neural Networks, Random Forest.

INTRODUCTION

In the fields of materials science and engineering, polymer nanocomposites show great promise. Nanoscale fillers like graphene, silica nanoparticles, carbon nanotubes, and metal oxides are included in polymer matrices in these materials

[1]. Nanoreinforced polymers outperform composites in all respects, including mechanical, thermal, and functional durability. Among the many applications for polymer nanocomposites include those in biomedical engineering, energy storage, packaging, electronics, aerospace, and automobiles [2]. Ideal for next-gen industrial applications, they are lightweight, strong, resilient, and adaptable. Incorporating nanofillers into polymer nanocomposites improves their properties due to the nanofillers' high surface area-to-volume ratio and robust interfacial interactions. Interactions on the nanoscale enhance thermal stability, resistance to fracture, stress transmission, and stiffness [3,4]. The structural and electrical properties of carbon nanotubes are enhanced by their ability to increase the tensile strength and electrical conductivity of polymer matrices. Polymer nanocomposites based on graphene improve mechanical performance and thermal conductivity; they are thus well-suited for use in flexible electronics and heat dissipation. The protective coatings and food packaging made of nanoclay-reinforced polymers are great because of their barrier qualities [5-7]. However, polymer nanocomposites still have a hard time breaking even. By manipulating material compositions, processing conditions, and fabrication methods, traditional materials research and development employ trial-and-error procedures to attain desired qualities. The process can be somewhat demanding in terms of time, resources, and money, and it may require thorough testing and characterization in the lab. Characteristics of the nanofiller, quality of the dispersion, interfacial bonding, and material performance are all influenced by nonlinear relationships [8]. Predicting material behavior using analytical and empirical methods is challenging due to complexity.

Another concern with commercializing polymer nanocomposite products is their scalability. Materials that work well in a lab setting might not be the best choice for mass production. The material's properties are impacted by variables such as process temperature, mixing speed, filler dispersion, and production variability. The use of industrial nanocomposites is hindered by these uncertainties, which increase prices and impede product development [9,10]. In recent years, AI has been helpful in resolving challenging problems in materials science. Artificial intelligence (AI), and more especially machine learning (ML), enables computers to autonomously detect patterns in data and make accurate predictions. Machine learning algorithms may be able to discover hidden correlations and accurately predict material attributes by analyzing large datasets that include material compositions, processing factors, and performance outcomes [11,12]. When compared to experimental procedures, this data-driven approach expedites the optimization and development of material formulations. Strength, electrical conductivity, thermal conductivity, and durability are all predicted by ANNs, Random Forest, and support vector machines. Complex nonlinear interactions between input variables and output features are represented by these models, which manage enormous multidimensional data [13,14]. Because they can learn hierarchical data representations, Artificial Neural Networks do a good job of depicting complicated material processes. The feature importance analysis and exceptional prediction capabilities of Random Forest models aid researchers in identifying critical performance aspects. Predictions made by SVMs with little overfitting occur in high-dimensional datasets.

Research on plastic nanocomposite materials is being transformed by artificial intelligence. To find the best material compositions before production, researchers can use AI-driven predictive models rather of trial and error. Rapidly test more material combinations with the help of AI, cutting down on experimental iterations and speeding up R&D. The commercialization of materials research is accelerated by AI-driven efforts [15,16]. Artificial intelligence (AI) can reduce development risks and production costs by properly predicting material performance and finding economically feasible formulas. New materials can be introduced by industries more quickly [17,18]. Industrial processes can be optimized for material performance and quality with the help of AI in large-scale production. Development of novel materials is yet another advantage of AI-driven processes. Academics often overlook novel material combinations and design ideas that can be uncovered by machine learning. The result is novel polymer nanocomposites with applications in energy storage, flexible electronics, and medicinal implants.

Commercialization is accelerated and sustainable materials are created by AI. Artificial intelligence (AI) helps preserve natural resources by enhancing material compositions and decreasing experimental waste. This supports sustainable materials engineering and manufacturing on a worldwide scale. Despite the potential, there are significant difficulties to commercializing AI in polymer nanocomposite. It is challenging to locate datasets of high quality [19]. A large amount of reliable, consistent data is required to train machine learning algorithms. The data on materials is fragmented since different studies use different experimental and measurement methodologies. Robust material databases and tried-and-true data gathering techniques are necessary for this subject. Another issue is model interpretability. The understanding of causes is necessary for the scientific validation and industry acceptance of AI models, even though these models offer correct predictions [20,21]. The goal of studying explainable AI approaches is to make models more interpretable and transparent. Finally, there is a material with tremendous commercial potential: polymer nanocomposites. The commercialization process is slowed down by conventional research and development methods, which involve laborious experimentation. Quick property prediction, optimized materials, and scalable manufacturing are all made possible by AI. Innovation, efficiency, and commercialization in materials science are accelerated through AI-driven polymer nanocomposite research. This paradigm powered by AI is essential for materials research and industrial development. Tissue engineering and regenerative medicine share some similarities, but they are not the same. Engineered tissues and organs are created by the use of biomaterials, scaffolds, and cells in a controlled environment. To support the body's natural healing processes, regenerative medicine makes use of stem cells, growth hormones, gene therapy, or both, with or without artificial structures. The goal is to repair and regenerate tissues and organs. Regenerative medicine offers a variety of treatments for damaged or non-functional tissues, including tissue engineering.

LITERATURE REVIEW

The focus of advanced materials research is on polymer nanocomposites due to their superior mechanical, thermal, electrical, and functional properties compared to regular polymers. These materials are created by adding nanofillers to polymer matrices, such as carbon nanotubes, graphene, nanoclays, and metal oxide nanoparticles. Biomedical devices, aerospace parts, car bodies, electronics, and packaging are some of the many areas that have been the focus of research into polymer nanocomposites [22,23]. Nanofillers enhance the functionality, thermal stability, durability, and strength of polymer nanocomposites, making them important engineering materials.

Improved wound dressings can be achieved through the utilization of nanobiocomposites, which incorporate nanoparticles into biocompatible polymer matrices. Nanobiocomposites, in contrast to passive dressings such as cotton or gauze, lower the risk of infection, contribute to the creation of an optimum moist environment that encourages tissue regeneration, and enhance both mechanical strength and flexibility for increased durability. By ensuring that antibiotic or growth hormone therapy is administered in a controlled and continuous manner, they accelerate the healing process of wounds and reduce scarring.

The study of polymer nanocomposites began with an interest in methods for improving their properties. By improving the bonding and stress transfer between the filler-polymer matrix interfacial sites, nanoscale fillers raise mechanical properties [24]. Polymer chain interactions and stiffness are both enhanced by nanoparticles due to their huge surface area. Nanofillers increase heat resistance while decreasing the mobility of polymer chains, according to the researchers. Electronic polymer nanocomposites with nanofillers, such as carbon nanotubes and graphene, have a higher electrical conductivity.

The effect of processing, dispersion quality, and nanofiller content on the performance of polymer nanocomposite has been the subject of multiple experiments. For the best results, the nanoparticles should be evenly dispersed throughout the polymer matrix. Structures are compromised and mechanical

performance is diminished due to nanoparticles that are not evenly distributed [25,26]. Scientists have experimented with in situ polymerization, melt mixing, and solution casting to enhance nanoparticle dispersion and material performance. Composite performance, interfacial bonding, and compatibility between nanofiller and polymer matrices have all been the subject of substantial research into the surface functionalization of nanoparticles.

Experimental research has made great strides, but methods based on trial and error still fall short when it comes to commercializing and synthesizing materials quickly. Predicting material properties is challenging because of the complicated interactions between nanofillers, polymers, and manufacturing conditions [27]. Scientists think that data-driven and computationally sophisticated approaches expedite the optimization and discovery of materials.

Advances in AI and ML have accelerated the study of polymer nanocomposite materials. Patterns in large datasets can be discovered using machine learning algorithms, which traditional analytics are unable to do. The mechanical, thermal, and electrical properties of polymer nanocomposites were predicted by researchers using machine learning [28]. Such models foretell the material's performance by taking processing, surface characteristics, nanofiller type, concentration, and particle size into account.

When it comes to expressing complicated nonlinear interactions, Artificial Neural Networks are the way to go in materials research. Neural networks successfully predicted the tensile strength, elastic modulus, and thermal conductivity of polymer composites. Less experimental testing was necessary for models with high prediction accuracy. Predicting material and performance characteristics using Random Forest algorithms [29,30]. Random Forest ensemble learning uses multiple decision trees to decrease overfitting and increase prediction accuracy. Support Vector Machines are great in predicting material characteristics because of how well they work with data that has several dimensions.

The commercialization of materials is accelerated by machine learning, according to recent studies. Quickly identifying formulations tailored to specific applications, machine learning sorts through material compositions. Less money is spent on development and experiments. Using machine learning, researchers were able to enhance processing parameters and manufacturing efficiency [31]. Manufacturing and material design models that are predictive are made possible by machine learning and databases of materials.

The emerging discipline of materials informatics integrates data science, materials science, and artificial intelligence to hasten the discovery and commercialization of novel materials. Predicting material qualities, optimizing performance, and guiding materials development are all achieved through this data-driven approach. Countless databases of experimental and computational data were amassed by machine learning researchers [32–34]. In order to speed up the process of developing new materials, databases educate precise predictive models.

The field of materials science makes use of deep learning. Material data hierarchies and complex input-output interactions can be learned by deep neural networks [35]. The electrical, mechanical, and thermal characteristics of nanocomposites were correctly predicted by deep learning systems. Compared to machine learning, these models perform better on complicated datasets.

Materials informatics is a hotspot for explainable AI. The purpose of this research is to better understand the properties of materials and to increase the interpretability of machine learning models. Science and study on material behavior benefit from this. The literature suggests that AI has the potential to revolutionize the study and commercialization of polymer nanocomposite materials. Optimization of materials, reduction of experimental effort, and prediction of properties are all accelerated by machine learning. Due to AI, production may be scaled up while expenses are lowered

and productivity is increased. The use of AI in materials research has led to a surge in the creation and sale of polymer nanocomposite products.

METHODS

Polymer nanocomposites are constructed using AI and data analytics, as seen in Figure 1. This diagram depicts a life cycle that begins with the discovery of a material and continues through its processing, formulation, development, integration into the market, and improvement. "Innovative polymer nanocomposites" is the stated goal of the framework, as illustrated in Figure 1. This core is powered by computational modeling, AI, ML, and huge data analysis. These technologies are paving the way for optimization and decision-making powered by data as they advance in development. Polymer matrices and nanofillers are uncovered for material discovery using AI-driven simulations and nanomaterials screening. It is possible to save time and money by predicting materials and compatibility before physical synthesis. The efficiency and accuracy of material combination choices are both enhanced by AI.

The process of developing and digesting a framework begins with discovery. The mixing, temperature, pressure, and composition ratios are chosen using AI models. This guarantees the electrical, mechanical, and thermal properties of nanocomposites. These features are improved in real-world scenarios through computer modeling. As a result of product development, perfect materials can be transformed into useful items. Analytics powered by AI and data shorten the time it takes to create prototypes, analyze performance, and assess quality. As a last step, nanocomposites are tested to ensure they meet all applicable industry standards. Products are applied to real-world problems through market integration. AI evaluates business processes, customer demands, and market performance. It is possible to upgrade and innovate the system by recirculating this data. Using artificial intelligence and data analytics, a closed-loop intelligent system can increase production of polymer nanocomposite, as shown in Figure 1. Innovation, productivity, affordability, and the high-performance materials used in today's industry are all enhanced by this technology.

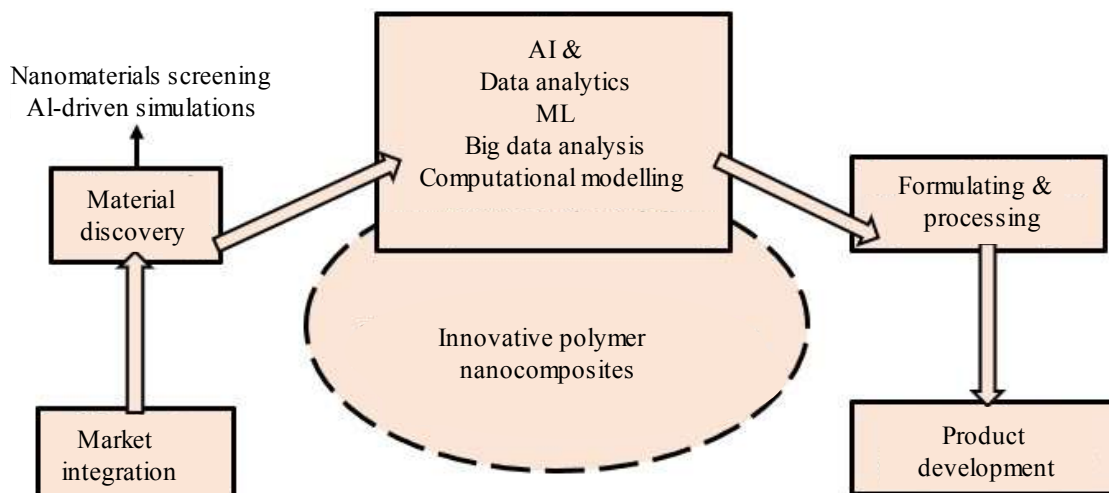


Figure 1. Block diagram of AI-driven framework

The design and implementation of an AI-driven, data-centric approach to polymer nanocomposites is shown in Figure 2. The image depicts a well-structured pipeline that utilizes industrial processes, computer intelligence, and materials science to efficiently and scalably innovate. The procedure starts with defining the problem and creating goals, as shown in figure 2. Applications' needs, performance goals, and constraints are defined here. The following processes are guaranteed to be strong mechanically, thermally stable, and electrically conductive. After that, we'll use databases of nanomaterials and modeling tools to screen and discover new materials. Big, time-consuming

experiments are rendered unnecessary by AI-driven screening and simulations for rapid material property evaluation. At this point, the nanofiller and polymer matrix are chosen more quickly.

The next step is data modeling and analysis powered by AI. The use of machine learning algorithms, big data analytics, and computational materials modeling allows for the analysis of massive datasets. Predicting material behavior, optimizing parameters, and assisting with decision-making are all made easier with these technologies. Development is now experimentally predictable due to AI integration. Revising the material composition is achieved through optimizing the formulation of polymer nanocomposite. Researchers can find the best polymer-nanomaterial ratios for properties by using AI models. Eliminating the need for trial and error speeds up the formulation design process in this step. Before developing a prototype or final product, it is necessary to optimize the formulation. This is where we test our prototypes and see how they perform. Testing nanocomposites in real-world conditions is done to guarantee compliance. The incremental improvement of product performance and reliability is achieved through testing.

Critically following this is the commercialization strategy, which includes things like governmental permissions, business planning, and market research. AI has the ability to predict consumer needs, analyze market tendencies, and invent novel applications. In order to meet the needs of the industry, rules are reviewed. Rapid product market integration is the final step. Now is the time for businesses to adopt novel materials since efficiency and speed of implementation are priorities. A continuous improvement loop can be established by incorporating market feedback into earlier phases. The manufacturing of polymer nanocomposite using artificial intelligence and data analytics is shown in Figure 2. Commercialization in a competitive market is guaranteed, costs are decreased, innovation is accelerated, and precision is improved.

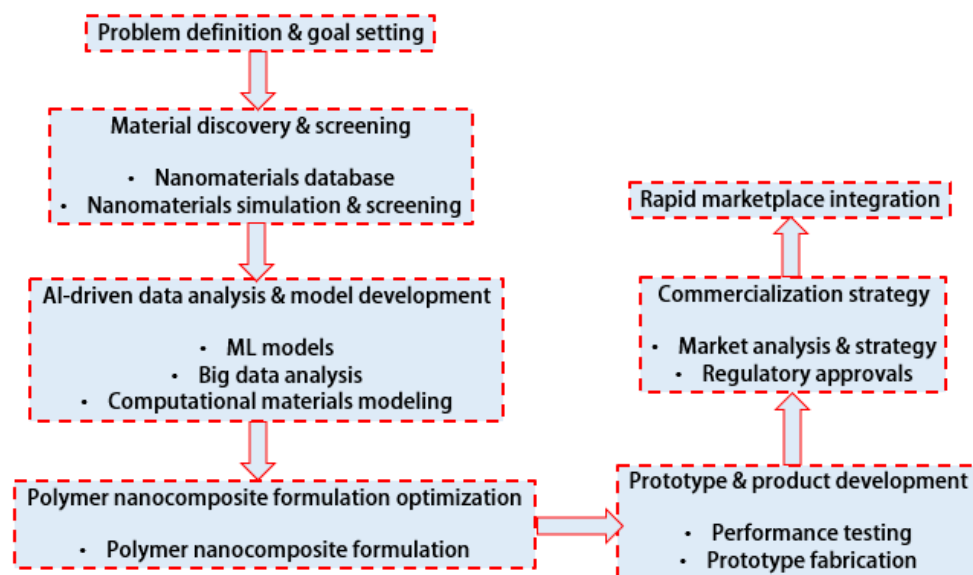


Figure 2. AI-driven workflow for polymer nanocomposite development, optimization, and commercialization process

INVESTIGATIONAL RESULTS

In the presence of liquids, polymers and hydrogels expand. This characteristic is essential for the retention of moisture, permeability, and the release of therapeutic agents in medical applications like as wound dressings and medicine administration systems. For the purpose of measuring swelling, dry material is weighed and then submerged in liquid for a predetermined amount of time. After absorption, the removal of the enlarged substance and its weight are discussed. The swelling ratio, which is a

measurement of fluid intake, is calculated by dividing the difference between the swelled weight and the dry weight by the dry weight. In Figure 3, we can see how various development approaches stack up in terms of validation time, market entrance time, R&D cost, and return on investment (ROI). From traditional trial techniques to completely automated AI systems, these solutions show how technology improves development efficiency and results. The lengthy prototype and validation stages make traditional trial approaches time-consuming and resource-intensive. Manual experimentation and repeated testing limit entry into the market. Greater research and development expenditures and a poor return on investment (ROI) are indicators of resource inefficiency. Prototype and validation times are decreased through simulation-based design. Enhancing this, virtual reality design testing removes the need for physical experimentation. This improves cost-effectiveness by decreasing market entry time, R&D expenditures, and ROI.

Table 1. Commercialization Acceleration Indicators

Development Strategy	Prototype Cycles	Validation Time (Months)	Market Entry Time (Months)	R&D Cost (Million USD)	ROI (%)
Traditional Trial Method	12	10	30	4.8	18
Simulation-Based Design	8	7	24	3.9	25
Data-Driven Optimization	6	6	20	3.2	31
AI-Predictive Modeling	4	4	15	2.6	39
Hybrid AI-Simulation	3	3	12	2.2	45
Fully Automated AI Platform	2	2	9	1.8	52

Optimization based on data is enhanced by analytical insights. With shorter validation times and fewer prototype cycles, more accurate decisions may be made as shown in table 1. Reduced uncertainty and simpler approaches lead to a significant increase in return on investment (ROI) when R&D costs decline. Machine learning is utilized by AI-predictive modeling to enhance efficiency. Validation and prototype iterations are minimized by predictive analysis. A shorter time to market allows for better management of R&D expenses. A higher return on investment (ROI) is a sign of how important predictive intelligence is for progress. Hybrid AI simulation strikes a good compromise between speed and accuracy by combining AI with classical simulation. This approach optimizes return on investment (ROI) while decreasing time-related costs. Better projections and quicker iterations are two ways AI boosts productivity. An automated platform is the most cutting-edge AI system. In terms of return on investment (ROI), validation time, R&D expenses, and prototype cycles, it is unrivaled. This points to a very effective automated system that requires minimal human intervention during production and deployment. Improved productivity, lower expenses, and higher profits are the results of incorporating AI and automation into development processes (Figure 3).

In Figure 4, we can see a comparison of XGBoost, Gradient Boosting, Linear Regression, Random Forest, SVM, and ANN. Prediction accuracy, root-mean-square error (RMSE), R^2 score, training time, and deployment effectiveness are the five metrics used to assess the outcomes (see table 2). It is illustrated in this chart the prediction capacities, computational cost, and operational efficiency of several models. When compared to other models, Linear Regression's R^2 score, RMSE, and prediction accuracy are the worst. Suitable for simple and interpretable jobs, it has a quick training duration and rapid deployment. Random Forest enhances prediction accuracy, R^2 score, and root mean squared error. Despite being more time-consuming to train compared to Linear Regression, its ability to generalize and withstand errors makes deployment more efficient.

The SVM is competitive because it uses balanced measures for accuracy and error. Ideal for medium-complex tasks, it has a fair training time and is successful when deployed. An increase in R^2 score and a decrease in RMSE are examples of ANN enhancements. Training time increases due to the computational complexity of improved neural networks. However, the efficiency of deployment is

improved by ANN's predictive power. Gradient Boosting enhances accuracy and RMSE with shorter training time compared to ANN. The great deployment efficiency of the model is evidence of its optimization. Out of all the models tested, XGBoost had the best prediction accuracy, R² score, and RMSE. Despite a moderate training duration, it achieves the maximum deployment efficiency while balancing performance and computational cost. The training time is increased but the prediction accuracy is improved as seen in Figure 4 by increasing the complexity of the model. Complex data-driven applications benefit most from the accuracy and efficiency of advanced ensemble and boosting approaches, such as XGBoost.

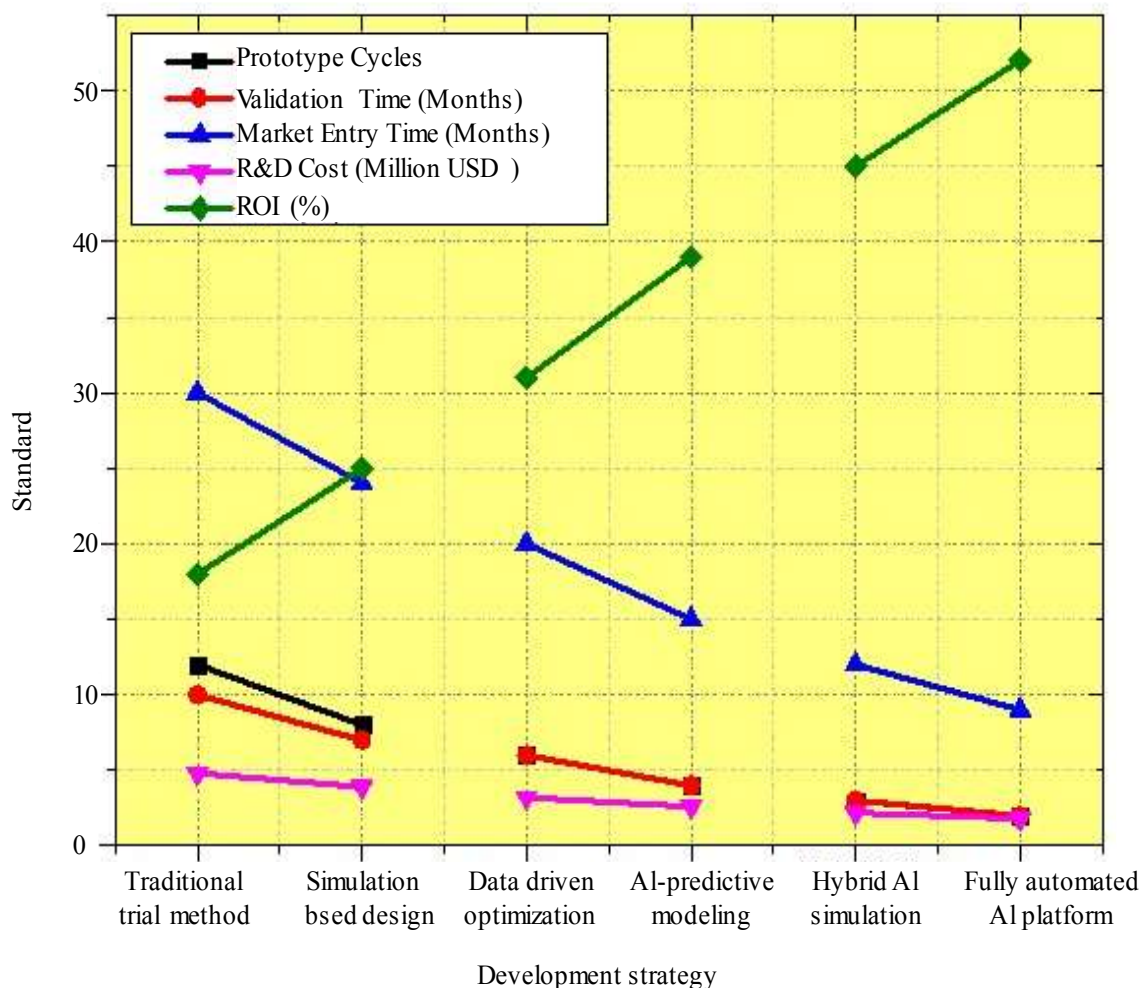


Figure 3. Comparative analysis of development strategies highlighting efficiency, cost reduction, and ROI improvement trends

Table 2. AI Prediction Performance Metrics

Model Type	Prediction Accuracy (%)	RMSE	R ² Score	Training Time (Hours)	Deployment Efficiency (%)
Linear Regression	84	0.92	0.86	2.1	75
Random Forest	93	0.54	0.94	3.4	88
Support Vector Machine	91	0.61	0.92	4.0	85
Artificial Neural Network	95	0.48	0.96	6.5	91
Gradient Boosting	94	0.50	0.95	5.2	89
XGBoost	96	0.42	0.97	4.8	93

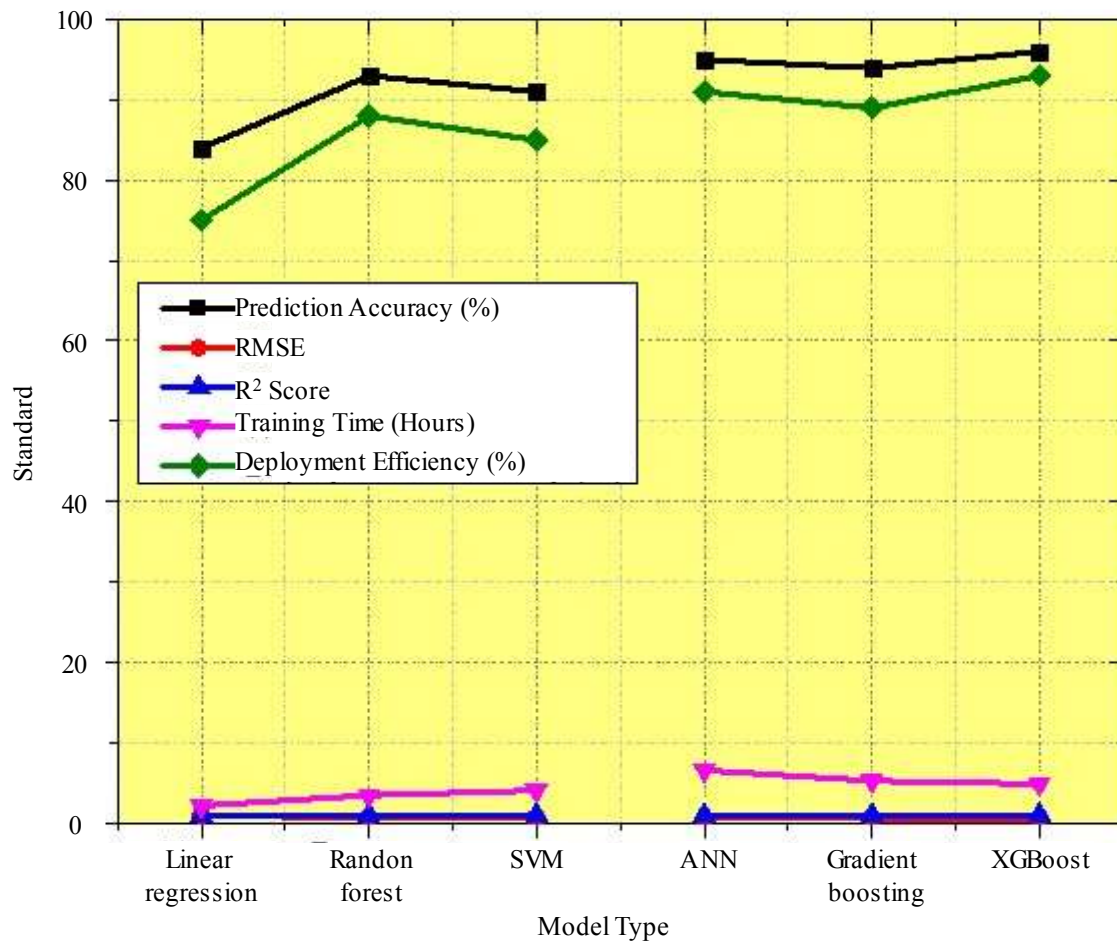


Figure 4. Comparison of machine learning models showing accuracy, error, time, efficiency performance trends

Table 3. Mechanical Property Prediction Comparison

Approach	MAE	RMSE	R ² Score	Processing Speed (s)	Prediction Stability (%)
Statistical Model	2.8	3.5	0.82	1.8	79
Random Forest	1.4	1.9	0.93	1.2	90
Support Vector Machine	1.6	2.1	0.91	1.4	88
ANN	1.2	1.7	0.95	1.6	92
Deep Neural Network	1.0	1.4	0.97	2.0	94
Ensemble Model	0.9	1.2	0.98	1.9	96

Models such as ensemble, ANN, DNN, statistical, random forest, support vector machine, and SVM are compared in Figure 5. The following five performance metrics are assessed: processing speed, prediction stability, MAE, and R² score. This graphic illustrates the relationship between model complexity and the precision, consistency, and efficiency of forecasts in table 3. A poorer prediction accuracy is shown by greater MAE and RMSE values in the Statistical Model. Low R² scores indicate that the model has little explanatory power. It is well-suited for straightforward analytical applications that value simplicity over precision due to its slow processing speed and stability. By lowering MAE and RMSE and raising R² score, the Random Forest method boosts performance. Consistency in the dataset is suggested by improved prediction stability. Its practicality stems from its lightning-fast processing rates.

With SVM, prediction accuracy is enhanced, and the error rate is low, while the R^2 score is high. Not as fast as Random Forest, but it still does a good job at predicting. Because of this balancing, SVM is dependable even in very difficult situations. Modeling gets a huge boost from ANN. With better R^2 scores and lower MAE and RMSE values, ANN achieves better accuracy (Figure 5). Predictions that are more stable demonstrate consistent performance. Processing time is moderately enhanced by neural network computing. Predictions are stabilized and mistakes are reduced with DNN. A model is considered well-fitted when the R^2 value is high. The accuracy-computational cost trade-off in deeper designs is demonstrated by the processing speed plummeting. At long last, we have the Ensemble Model. It has the best R^2 score and prediction stability, with the lowest MAE and RMSE values. Although it processes slower than simpler models, it achieves a balance between accuracy, longevity, and efficiency. Figure 5 shows that advanced and hybrid modeling methods, especially ensemble methods, increase processing power requirements while improving predictive performance and stability.

Figure 6 shows a comparison of several optimization strategies, including AI-based optimization, smart factory optimization, digital twin integration, predictive maintenance, and lean manufacturing. The sustainability score, production cost in USD/kg, waste reduction in percentage, carbon emission reduction in percentage, and energy consumption in kWh are all metrics that contribute to efficiency and sustainability in table 4. Production is becoming more environmentally friendly and affordable, as seen in this image. Figure 6 illustrates that conventional production inefficiently uses more than 500 kWh. Though it increases manufacturing costs, this technology does little to decrease waste and carbon emissions. The method's poor sustainability score reflects its limitations in terms of both economic and environmental impact. Both energy consumption and production expenses can be cut with the help of lean manufacturing. Optimizing processes and making better use of resources both lead to less waste. While it does better than more advanced systems in terms of reducing carbon emissions, its sustainability score is lower.

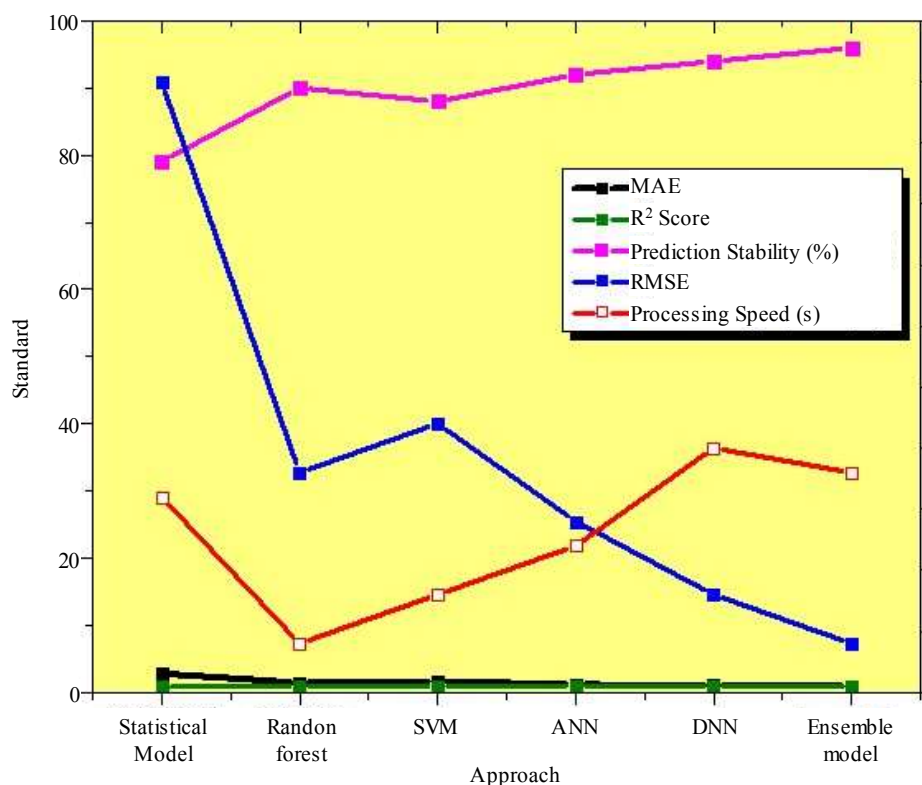


Figure 5. Comparison of approaches highlighting accuracy, stability, error, and processing performance trends

Table 4. Sustainability and Cost Efficiency

Strategy	Energy Consumption (kWh)	Waste Reduction (%)	Carbon Emission Reduction (%)	Production Cost (USD/kg)	Sustainability Score (%)
Conventional Manufacturing	520	10	8	18.5	62
Lean Manufacturing	460	18	15	16.8	71
AI-Based Optimization	390	28	24	14.5	82
Predictive Maintenance	410	25	21	15.2	79
Digital Twin Integration	370	32	29	13.8	87
Smart Factory Automation	350	35	33	12.9	90

Operations are revolutionized by AI-based optimization, which employs complex algorithms. Emissions of carbon, trash, and energy decrease significantly. Manufacturing expenses are reduced by resource efficiency. Employing AI in production improves sustainability ratings. Predictive maintenance powered by AI increases productivity while reducing equipment downtime. While this approach reduces waste and pollution, it uses somewhat more energy than optimization based on artificial intelligence (Figure 6). Both production costs and sustainability are on the upswing. Integrating digital twins allows for real-time monitoring and simulation, which in turn improves system performance. The environment, decision-making, and efficiency all benefit from this. Reducing energy usage is achieved through increased waste and carbon emission reductions. A more sustainable production process is one that is well-balanced and simplified. Most recently, there has been smart industrial optimization. Reduced energy and production expenses, less waste, and fewer carbon emissions. Figure 6 depicts an industrial ecosystem that is efficient, automated, and ecologically friendly, achieving the greatest sustainability score. Integrated and intelligent manufacturing systems enhance sustainability, efficiency, and the environment (FIGURE 6).

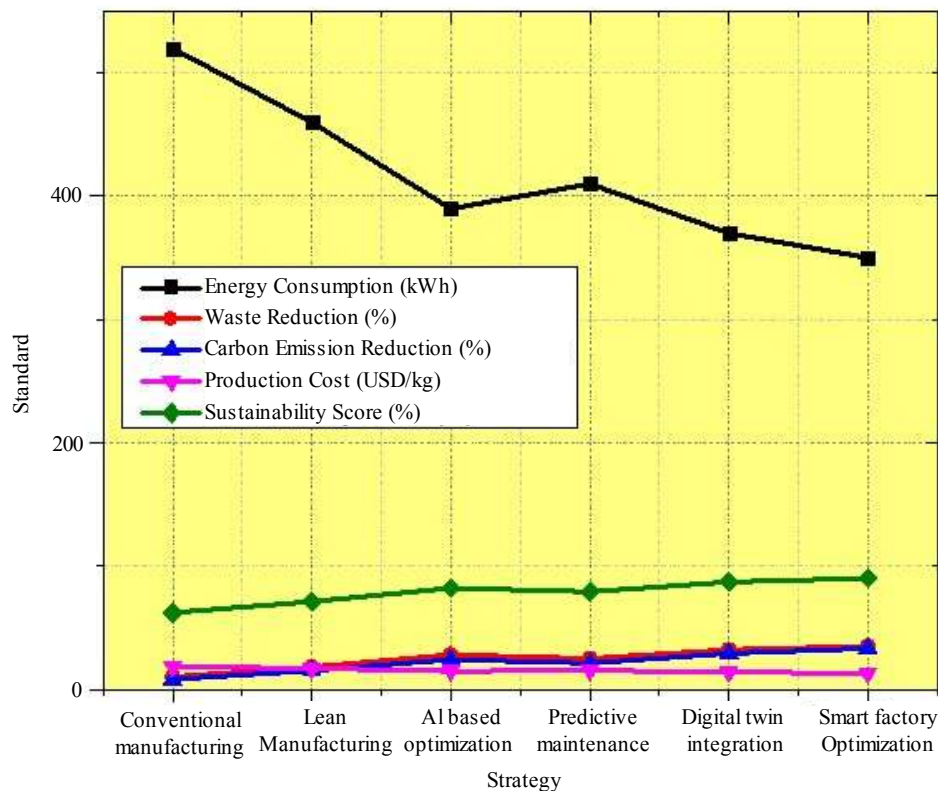


Figure 6. Manufacturing strategies showing sustainability, cost, energy, and efficiency improvements

Table 5. Market Adoption Metrics

Market Sector	Adoption Rate (%)	Growth Rate (%)	Revenue (Million USD)	Customer Retention (%)	Commercial Viability Score (%)
Automotive	68	12	520	82	76
Aerospace	55	9	430	78	72
Biomedical	61	11	390	80	74
Electronics	72	14	610	85	83
Packaging	64	10	480	79	75
Construction	59	8	350	77	70

Figure 7 shows a comparison of six market sectors: construction, aerospace, biomedical, electronics, and adoption rate, growth rate, revenue (in million USD), customer retention, and commercial viability score. Trends in performance for these parameters broken down by industry are presented in the graphic and in table 5. Most variable is blue line revenue, measured in million USD. Strong market demand and profitability are shown by the 600 million USD growth in the electronics sector. Less investment in packaging and construction means less money in the bank. Sales in the automotive and aerospace industries are stable but not very dynamic. Black adoption rates vary across all sectors, ranging from 60% to 80%. This consensus shows that the investigated technology or solution has sector-wide support. A close correlation exists between the electronic industry's peak in revenue and its peak in adoption.

The red-labeled growth rate (%) is the lowest indicator, ranging from 5% to 12%. The electronics industry is still going strong, with no signs of slowing down. Decreased growth is indicated by minor shifts in other areas. Regardless of industry, customer retention rates range from 70% to 85% (magenta). The fact that they continue to be involved after using the product is evidence of pleased, loyal customers. When it comes to electronics and biomedicine, customer loyalty is better maintained. Scores for green business viability range from 65% to 80%, just like adoption and retention rates. Once again, electronics takes the lead in a number of measures. Figure 7 shows that the electronics market has the biggest potential in terms of revenue, acceptance, growth, and viability. Delays in construction and packing indicate a need for investment or improvement.

The strategic performance metrics of the following AI platforms are compared in Figure 8: Basic ML Pipeline, Cloud-Based ML, Edge AI System, Hybrid AI Platform, Automated ML Suite, and Enterprise AI Ecosystem. Measures of operational maturity for each framework are Readiness Index (%), Integration Time (Months), Deployment Cost (Million USD), and Scalability (%) and in table 6. Frameworks exhibit a consistent increase in scalability (%) as depicted by the black line. Unlike enterprise AI ecosystems, which scale above 95%, basic ML pipelines scale 70%. This proves that difficult tasks and massive amounts of data may be efficiently processed by AI frameworks that are both advanced and interconnected. Red reliability also increases in percentage terms. As high as 96% in enterprise AI ecosystems and 78% in basic ML pipelines. Modern AI systems are more trustworthy because of their enhanced designs, fault tolerance, and processes.

Predicting future reliability and scalability, the green Readiness Index is a percentage. The percentage ranges from 72% for basic ML pipelines to 95% for industry-specific AI systems. Deployable AI frameworks at a higher level contain more integrated systems and more developed infrastructures. The deployment cost, shown by the blue line in million USD, is quite cheap across all frameworks but does increase slightly in more complex applications. Compared to enterprise AI ecosystems, basic ML pipelines and cloud-based ML solutions are more affordable. The little price premium can be worthwhile for more advanced frameworks. Framework complexity (magenta) is inversely proportional to integration time (months). While basic ML pipelines could take up to six months to complete, automated ML suites and hybrid AI systems can integrate in just two months. Integrating an AI ecosystem into a company is made easier with streamlined procedures and pre-built components. From

entry-level to enterprise-level AI frameworks, all of them help with cost savings, integration time, and improving scalability, reliability, and readiness (Figure 8). Enterprise AI ecosystems operate at peak efficiency and resilience in large-scale, production-ready scenarios.

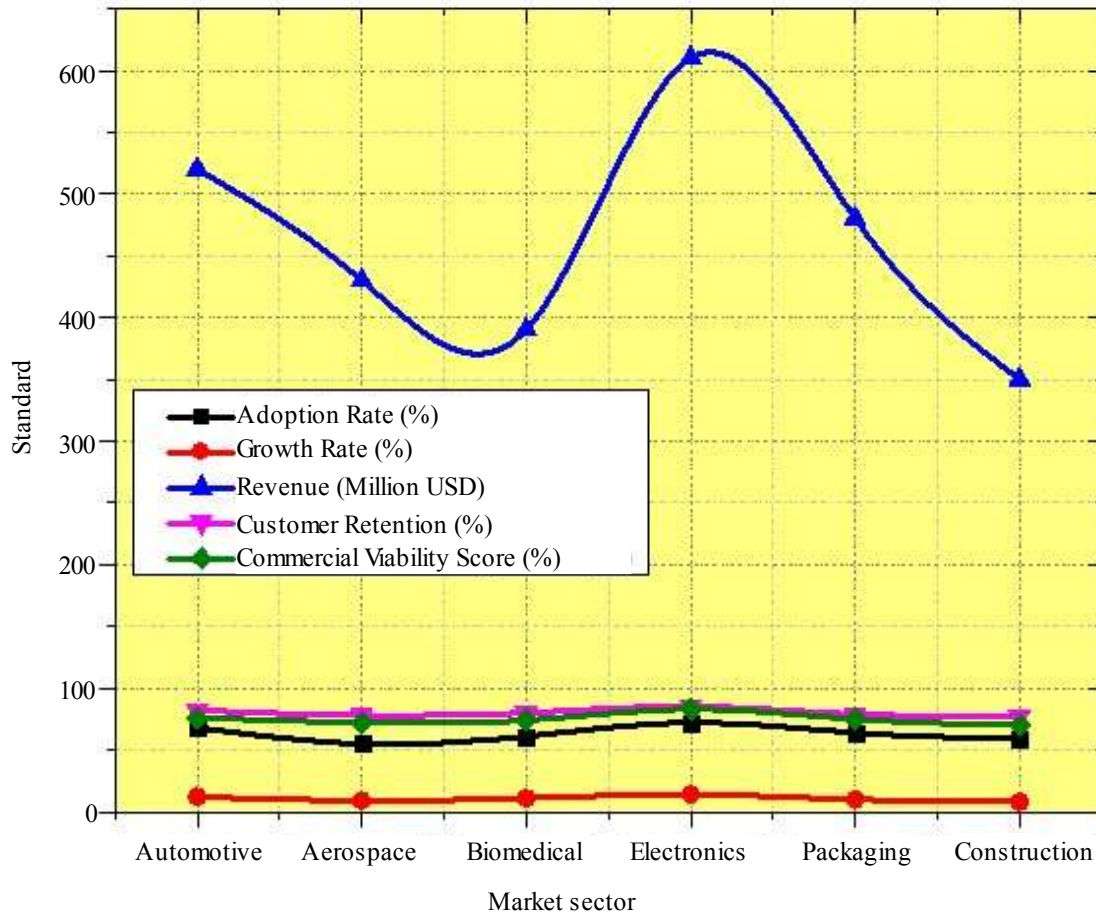


Figure 7. Comparative performance metrics across diverse market sectors highlighting key trends.

Table 6. AI Model Commercial Readiness

AI Framework	Scalability (%)	Reliability (%)	Deployment Cost (Million USD)	Integration Time (Months)	Readiness Index (%)
Basic ML Pipeline	72	78	1.5	6	74
Cloud-Based ML	80	84	1.8	5	82
Edge AI System	85	88	2.1	4	86
Hybrid AI Platform	90	91	2.4	3	90
Automated ML Suite	92	93	2.6	2	93
Enterprise AI Ecosystem	95	96	3.0	2	96

Figure 9 compares and contrasts the Total Duration, Concept, Prototype, Testing, and Launch methods of development, each of which takes one month. There are several types of AI platforms that are being tested, including traditional R&D, AI-assisted design, predictive, automated, and integrated in table 7. As seen in this chart, AI-driven solutions shorten development time in every step. As techniques progress, the black line representing the Concept Phase in Figure 9 shrinks. While conventional research and development takes ten months, integrated AI systems only take three. Automation, data-driven insights, and rapid prototyping are a few ways in which AI-enabled

technologies improve the productivity of ideation. Throughout the Prototype Phase, time decreases at a steady rate (red line). While conventional methods take eight months, those that use AI only take three. Methodologies that use simulations or AI to aid in the design process exhibit mixed results, indicating that partial AI adoption improves efficiency. Time spent in the Testing Phase (blue line) has also decreased. Comparatively, standard R&D takes 10 months, while testing advanced AI takes just 3 months. It was reduced with the use of AI-enabled testing, predictive analytics, and validation in real-time.

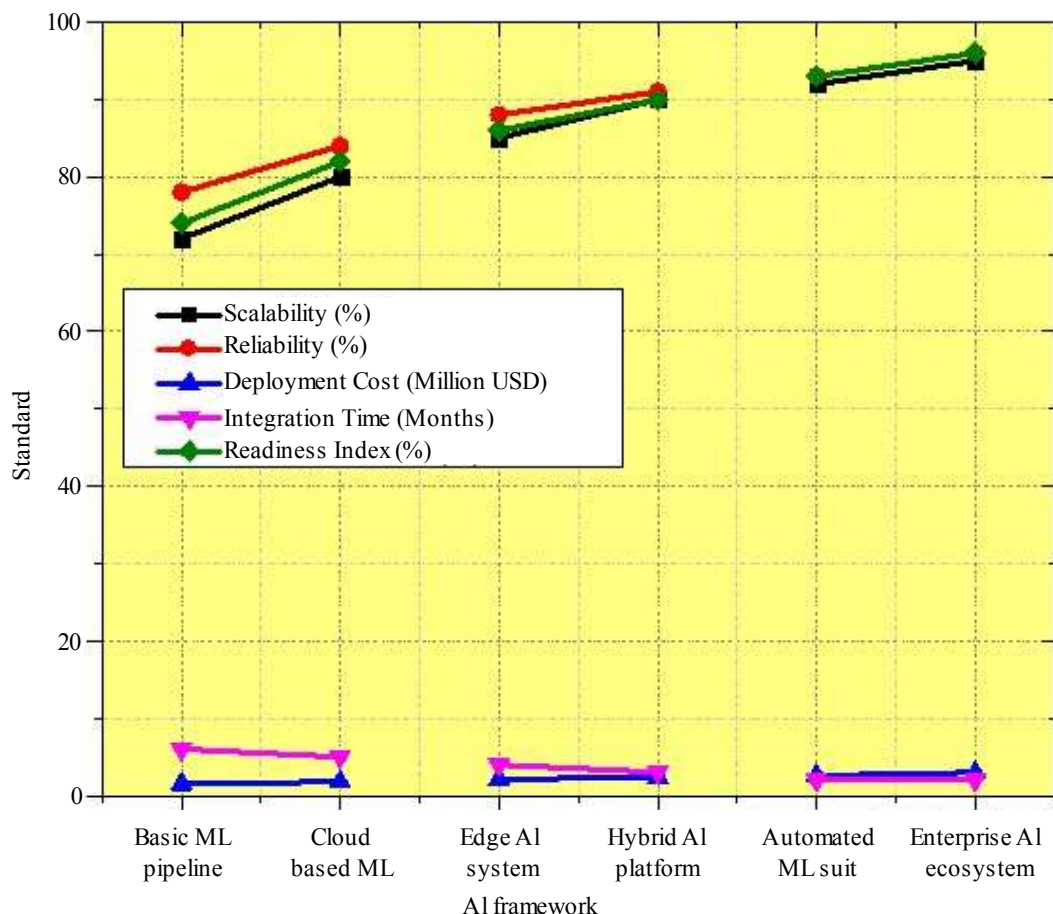


Figure 8. AI framework strategies highlighting scalability reliability cost and readiness trends.

Table 7. Time-to-Market Analysis

Approach	Concept Phase (Months)	Prototype Phase (Months)	Testing Phase (Months)	Launch Phase (Months)	Total Duration (Months)
Traditional R&D	6	8	10	6	30
Simulation-Aided	5	6	8	5	24
AI-Assisted Design	4	5	6	4	19
Predictive AI	3	4	5	3	15
Automated AI	2	3	3	2	10
Integrated AI Platform	2	2	3	2	9

Minimal improvements are being made to the Launch Phase (magenta line) variations. AI-enabled systems reduced 6 months of R&D time to 2. Through the use of efficient deployment pipelines and continuous integration, AI-driven applications may be launched more quickly. Crucially, Figure 9's

green line depicts the Total Duration of all stages. From 30 months to 9 months, R&D is cut in half using AI platforms. The revolutionary effect of AI on product development is demonstrated by this precipitous decline. As can be observed in Figure 9, approaches driven by AI reduce development time across the board. Innovation, time-to-market, and productivity may all be enhanced with the help of AI solutions that are predictive, automated, and interconnected. The significance of AI adoption in current development is highlighted by these findings.

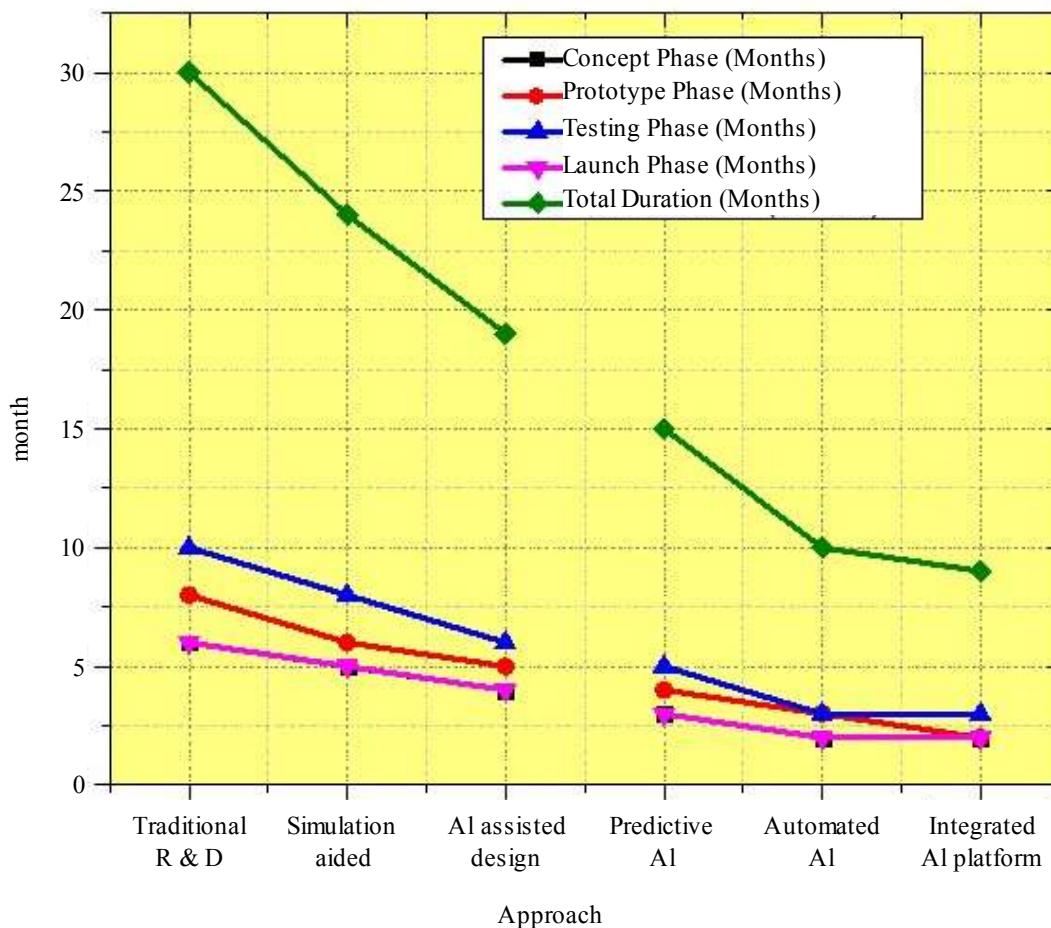


Figure 9. Development phase durations across approaches highlighting AI driven time reductions.

Table 8. Overall Performance Benchmarking

Method	Accuracy (%)	Cost Efficiency (%)	Time Efficiency (%)	Quality Score (%)	Commercial Success Rate (%)
Traditional	78	65	60	72	58
Statistical	83	70	68	76	64
Random Forest	91	82	80	88	79
Support Vector Machine	89	79	77	85	75
ANN	94	86	84	91	83
Ensemble AI Model	97	92	90	95	89

Accuracy, Cost Efficiency, Time Efficiency, Quality Score, and Commercial Success Rate are some of the metrics used to compare several artificial intelligence models in Figure 10. These models include statistical, random forest, SVM, ANN, and ensemble approaches. More complex AI algorithms tend to have better performance, as seen in the graph and table 8. Figure 10 shows that the conventional method

has a lower success rate in the commercial sector and a lower accuracy rate of 78%. On a grand scale, it is unable to adapt or resolve problems. There is a lack of resilience for higher-quality outputs, although the statistical method does moderately better in terms of cost and time efficiency. With Random Forest, performance is boosted significantly. Improving precision, quality, and accuracy by 91% is achieved by ensemble-based decision tree learning. Structural vetting methods reduce most metrics. SVM excels at classification tasks, but it could struggle to apply its findings to other contexts. Accuracy, the Commercial Success Rate, and the Quality Score all increase as the ANN model gets better. When it comes to nonlinear interactions, neural networks are masters.

No matter the metric, Ensemble AI always manages to beat the competition. With a 97% Accuracy Rate, 92% Cost Efficiency, 90% Time Efficiency, 95% Quality Score, and 89% Commercial Success Rate, it stands head and shoulders above the competition. Blending models to improve upon strengths and minimize flaws yields excellent results, as demonstrated below. System reliability, accuracy of predictions, and stability are all enhanced by ensemble techniques. New AI-driven approaches, particularly ensemble methods, perform better than individual ML models, as shown in Figure 10. Efficiency, accuracy, and practical application in sectors with complex problems are best addressed by hybrid approaches, according to the results.

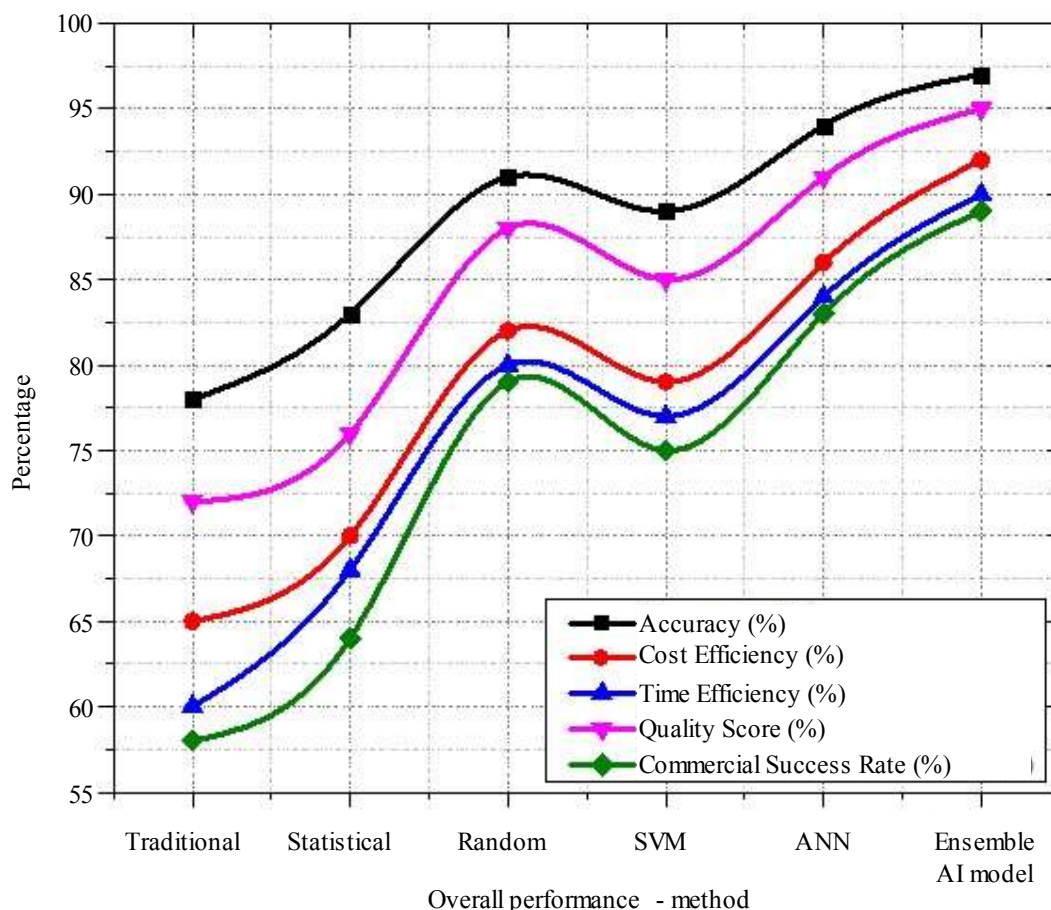


Figure10. Comparative performance evaluation of methods across accuracy, efficiency, quality, and success metrics

DISCUSSION

- Manufacturing systems, AI frameworks, development approaches, and machine learning models all contribute to greater accuracy, sustainability, and efficiency (Figures 3–10). Switching to AI-driven and automated solutions improves performance in several areas.

- Figures 3 and 9 illustrate the effects of AI on the efficiency of the development lifecycle. The prototyping, validation, and completion times of conventional R&D and trial-and-error methods are longer. Minimizing development time and resources is the goal of fully automated AI platforms that are data-driven, simulation-based. Reduce time from ideation to market with the use of automation, predictive analytics, and real-time analysis.
- Figures 4 and 5 showcase the dominance of advanced machine learning. Prediction accuracy and error rates are decreased in Statistical and Linear Regression models, but computing complexity is lowered. Nevertheless, more complex models such as ANN, DNN, Gradient Boosting, XGBoost, and Ensemble Models enhance stability, accuracy, and error measures. An accuracy-efficiency trade-off is indicated by the fact that performance enhancements typically increase processing and training time.
- A shift toward more sustainable and cost-effective production is shown in Figure 6. When compared to traditional and lean manufacturing methods, smart industrial systems that use artificial intelligence for optimization, predictive maintenance, digital twins, and energy savings outperform them. These smart solutions enhance operational efficiency and sustainability, meeting modern economic and environmental goals.
- Technology increases the viability, revenue, and acceptance of electronics (Figure 7). AI-powered answers can be useful in dynamic industries.
- As AI frameworks progress, enterprise-level ecosystems exceed basic and intermediate systems in terms of scalability, reliability, and readiness, all while keeping integration time and costs low (Figure 8). Accuracy, efficiency, and financial success are three areas where ensemble AI models shine (Figure 10). Findings show that research, modeling, manufacturing, and deployment processes can all benefit from AI integration, with hybrid and ensemble approaches having the greatest impact on innovation speed, performance, cost reduction, and sustainability.

CONCLUSIONS

This research demonstrates that AI has the potential to revolutionize the manufacturing, optimization, and marketing of polymer nanocomposites. The design and manufacturing of these advanced materials were done through a process of trial and error, which added time, expense, and resource consumption. Figures 3–10 show comparative and abstract assessments that show how materials engineering is changing to be data-driven and driven by artificial intelligence. The platform optimizes and predicts material qualities using ANN, Random Forest, and SVM models, all powered by AI. The models reveal intricate relationships among processing parameters, performance measures, nanofiller properties, and more. Figures 4, 5, and 10 show that compared to solo approaches, advanced and ensemble-based algorithms provide more efficient, accurate, and dependable forecasts.

The use of AI significantly reduces development time, as seen in Figures 3 and 9. The time it takes to create, validate, and launch a prototype to market is drastically reduced by predictive and automated solutions. This acceleration is essential for industries operating in dynamic marketplaces. Figure 6 shows how smart industrial systems, optimization driven by AI, and predictive maintenance all work together to make production more sustainable. Industrial efficiency and cost are both improved by these technologies, which also reduce energy use, waste, and carbon emissions. Industrial greener production and global sustainability are both helped by these innovations. Systems with AI improve commercial viability, reliability, scalability, and adoption (Figures 7 and 8). Using AI frameworks at the corporate level, high-performance polymer nanocomposites may be integrated and deployed from the lab to the field rapidly. Using AI as a catalyst, this research shows that polymer nanocomposite development is becoming more innovative. Artificial intelligence (AI) enhances scalability, accuracy, and efficiency by doing away with physical testing and allowing predictive, data-driven decision-making. System performance and quality are enhanced via ensemble learning and hybrid AI models.

Autonomous manufacturing and real-time material optimization are two areas that could benefit from deep and reinforcement learning in the future. Scalability is enhanced by digital twins, smart factories

enabled by the Internet of Things, and high-throughput testing. The predictive accuracy and practical application of polymer nanocomposites can be enhanced through multi-objective optimization and the extension of datasets.

REFERENCES

1. Musa, A. A., Bello, A., Adams, S. M., Onwualu, A. P., Anye, V. C., Bello, K. A., & Obianyo, I. I. (2025). Nano-enhanced polymer composite materials: A review of current advancements and challenges. *Polymers*, 17(7), 893.
2. Rashid, A. B., Haque, M., Islam, S. M. M., & Uddin Labib, K. M. R. (2024). Nanotechnology-enhanced fiber-reinforced polymer composites: Recent advancements on processing techniques and applications. *Heliyon*, 10(2), e24692.
3. Kamath, S., Chandrappa, R., Nagaraja, S., et al. (2025). Review of natural and synthetic nanofiller-enhanced natural fibre reinforced polymer composite (NFRPC): Materials, properties, and biomedical applications. *Micro and Nano Systems Letters*, 13, 22.
4. Mameţja, S., Mabuza, M., Sadiku, E. R., et al. (2025). Development of energy-efficient polymers by using conductive nanohybrid fillers: Recent progress and future prospects. *Advanced Composites and Hybrid Materials*, 8, 258.
5. Shchegolkov, A. V., Shchegolkov, A. V., & Kaminskii, V. V. (2026). Carbon nanotubes and graphene in polymer composites for strain sensors: Synthesis, functionalization, and application. *Journal of Composites Science*, 10(1), 43.
6. Yim, Y. J., Yoon, Y. H., Kim, S. H., Lee, J. H., Chung, D. C., & Kim, B. J. (2025). Carbon nanotube/polymer composites for functional applications. *Polymers*, 17(1), 119.
7. Liu, B., Sun, J., Zhao, J., et al. (2025). Hybrid graphene and carbon nanotube-reinforced composites: Polymer, metal, and ceramic matrices. *Advanced Composites and Hybrid Materials*, 8, 1.
8. Sharma, S. K., Sharma, L. K., Pradhan, R., Sharma, Y., Sharma, M., Gajević, S., Ivanović, L., & Stojanović, B. (2026). Interphase-centric and mechanism-driven advances in polymer composites reinforced with nano-, synthetic, and inorganic fillers. *Polymers*, 18(3), 323.
9. Antunes, M., & Arencón, D. (2026). Recent developments in the mechanical behavior of polymer-based composites. *Polymers*, 18(5), 598.
10. Rahman, M. M., Islam, S., Mubasshira, Islam, M. S., Ahammad, R., Islam, M. A., Hasib, M. A., Rahman, M. S., Moshwan, R., Ehsan, M. M., Rabbi, M. S., Moniruzzaman, M., Nazir, M. A., & Liu, W.-D. (2026). Polymer composites in additive manufacturing: Current technologies, applications, and emerging trends. *Polymers*, 18(2), 192.
11. Kibrete, F., Trzepieciński, T., Gebremedhen, H. S., & Woldemichael, D. E. (2023). Artificial intelligence in predicting mechanical properties of composite materials. *Journal of Composites Science*, 7(9), 364.
12. Sarker, I. H. (2022). AI-based modeling: Techniques, applications and research issues towards automation, intelligent and smart systems. *SN Computer Science*, 3, 158.
13. Ghasemi, A., & Barisik, M. (2025). Machine learning for thermal transport prediction in nanoporous materials: Progress, challenges, and opportunities. *Nanomaterials*, 15(21), 1660.
14. Rosa, A. C., Elomari, Y., Calderón, A., Mateu, C., Haddad, A., & Boer, D. (2024). Methodology for the prediction of the thermal conductivity of concrete by using neural networks. *Applied Sciences*, 14(17), 7598.
15. Long, T., Pang, Q., Deng, Y., Pang, X., Zhang, Y., Yang, R., & Zhou, C. (2025). Recent progress of artificial intelligence application in polymer materials. *Polymers*, 17(12), 1667.
16. Salas, M., Singh, A., Pignataro, C., et al. (2026). AI-powered open-source infrastructure for accelerating materials discovery and advanced manufacturing. *Communications Materials*, 7, 65.
17. Srivastava, N., Verma, S., Singh, A., Shukla, P., Singh, Y., Oza, A. D., Kaur, T., Chowdhury, S., Kapoor, M., & Yadav, A. N. (2024). Advances in artificial intelligence-based technologies for increasing the quality of medical products. *Daru*, 33(1), 1.
18. Antony Jose, S., Tonner, A., Feliciano, M., Roy, T., Shackelford, A., & Menezes, P. L. (2025). Smart

- manufacturing for high-performance materials: Advances, challenges, and future directions.
19. *Materials*, 18(10), 2255.
 20. Xue, X., Dhumras, H., Thakur, G., & Shukla, V. (2025). Integrating artificial intelligence and sustainable materials for smart eco innovation in production. *Scientific Reports*, 15(1), 36942.
 21. Venkataraman, M., Rao, G. C., Madavareddi, J. K., & Maddi, S. R. (2025). Leveraging machine learning models in evaluating ADMET properties for drug discovery and development. *ADMET and DMPK*, 13(3), 2772.
 22. Xu, P., Ji, X., Li, M., et al. (2023). Small data machine learning in materials science. *npj Computational Materials*, 9, 42.
 23. Singh, M. K., Palaniappan, S. K., Arora, G., et al. (2026). Recent advances in applications of nanocomposites: A brief overview. *Discover Materials*, 6, 58.
 24. Chan, J. X., Wong, J. F., Petrú, M., Hassan, A., Nirmal, U., Othman, N., & Ilyas, R. A. (2021). Effect of nanofillers on tribological properties of polymer nanocomposites: A review on recent development. *Polymers*, 13(17), 2867.
 25. Gao, T., Zhao, Y., Niu, Y., & Cao, X. (2026). Research progress on nanopolymer composites in civil engineering. *Nanomaterials*, 16(4), 267.
 26. Shah, M., Ullah, A., Azher, K., Ur Rehman, A., Akturk, N., Juan, W., Tüfekci, C. S., & Salamci, M. U. (2023). The influence of nanoparticle dispersions on mechanical and thermal properties of polymer nanocomposites using SLA 3D printing. *Crystals*, 13(2), 285.
 27. Khater, D., et al. (2024). Nanoparticles and nanofillers: Types, methods of preparation and characterization, and safety. In S. Mallakpour & C. M. Hussain (Eds.), *Handbook of Nanofillers*. Singapore: Springer.
 28. Venachi, N., Guerrero, A. I., Bolaños, P. A., et al. (2026). Review on aging of biodegradable polymers: Experimental approaches and emerging role of machine and deep learning. *Journal of Polymers and the Environment*, 34, 58.
 29. Gyabaah, K. Y., Mahoney, B., Martey, A. K., Yan, C., Mensah, P., & Li, G. (2026). Machine learning-assisted polymer and polymer composite design for additive manufacturing. *AI Materials*, 1(1), 2.
 30. Malashin, I., Tynchenko, V., Gantimurov, A., Nelyub, V., & Borodulin, A. (2024). A multi-objective optimization of neural networks for predicting the physical properties of textile polymer composite materials. *Polymers*, 16(12), 1752.
 31. Bakal Gumus, F., & Yildirim, H. (2025). Artificial neural networks-based prediction of mechanical properties in h-BN reinforced composites. *International Journal of Mechanics and Materials in Design*, 21, 1053–1067.
 32. Shen, C., Zhang, M., Lu, M., Chang, E., Gao, Z., Ban, W., Liu, Q., Zuo, Z., & Jiang, C. (2026). Machine learning empowered formulation design, optimization and characterization of nanoparticulate drug delivery systems: Current applications, challenges, and future perspectives. *Acta Pharmaceutica Sinica B*, 16(2), 665–685.
 33. Abu-Shams, M. (2026). Artificial intelligence integration in materials science. *Discover Applied Sciences*, 8, 232.
 34. Nazari, S., & Abdelrasoul, A. (2025). Advancements and applications of artificial intelligence and machine learning in material science and membrane technology: A comprehensive review. *Membranes*, 15(12), 353.
 35. Wang, F., Jiang, S., & Li, J. (2025). The AI-driven transformation in new materials manufacturing and the development of intelligent sports. *Applied Sciences*, 15(10), 5667.
 36. Choudhary, K., DeCost, B., Chen, C., et al. (2022). Recent advances and applications of deep learning methods in materials science. *npj Computational Materials*, 8, 59.