

Real-Time Ocean Monitoring and Early Warning Systems with IoT Technology

D. Mohanapriya^{1*}, R. Indumathi², S. Deepika², P. Lavanya²

Abstract

There is increasing frequency of extreme weather events, rising sea levels, and threats to marine biodiversity. This paper explores the application of internet of things (IoT) in enhancing real-time ocean monitoring and early warning systems, focusing on the deployment of smart sensors, connected buoys, and data analytics to collect key parameters such as temperature, salinity, pH, and wave activity. To preserve and responsibly utilize the seas, oceans, and marine resources in support of sustainable growth. One of the major challenges in achieving this goal is the lack of comprehensive, real-time data on ocean health and the ability to respond promptly to emerging threats such as pollution, overfishing, climate change impacts, and marine biodiversity loss. The real-time ocean monitoring and early warning system leverages IoT sensors, satellite technology, and artificial intelligence-powered analytics to address these challenges, providing continuous, real-time monitoring of critical ocean parameters and enabling early detection of environmental risks. These IoT-enabled devices communicate wirelessly, providing continuous data to predictive models that help identify early signs of natural hazards, such as tsunamis, hurricanes, and harmful algal blooms. By facilitating rapid data transfer and alert systems, IoT-based monitoring strengthens marine resource management, coastal protection, and disaster preparedness, empowering stakeholders to respond proactively to potential threats. This paper highlights the potential of IoT to make ocean monitoring more accurate, responsive, and accessible, providing valuable insights into the health of marine ecosystems and the safety of coastal communities.

Keywords: Internet of things (IoT) in ocean monitoring, real-time data collection, early warning systems, marine environmental monitoring, smart sensors, ocean data analytics

INTRODUCTION

The oceans, which makes up more than 70% of the planet's surface, is vital to biodiversity, climate regulation, and the provision of resources needed for human survival. However, climate change,

*Author for Correspondence

D. Mohanapriya
E-mail: mohanapriyacse@mvit.edu.in

¹Assistant Professor, Department of Computer Science and Engineering, Manakula Vinayagar Institute of Technology, Puducherry, India

²Student, Department of Computer Science and Engineering, Manakula Vinayagar Institute of Technology, Puducherry, India

Received Date: January 02, 2025

Accepted Date: January 10, 2025

Published Date: January 27, 2025

Citation: D. Mohanapriya, R. Indumathi, S. Deepika, P. Lavanya. Real-Time Ocean Monitoring and Early Warning Systems with IoT Technology. Journal of Instrumentation Technology & Innovations. 2025; 15(1): 13–24p.

pollution, and overfishing are intensifying threats to marine ecosystems, endangering not only the environment but also the economies and communities reliant on ocean resources. Furthermore, natural disasters such as tsunamis, hurricanes, and harmful algal blooms are increasingly impacting coastal regions, causing significant damage and loss of life. To address these challenges, the need for advanced, responsive, and precise ocean monitoring systems has never been more pressing. Traditional ocean monitoring systems, while useful, often fall short in terms of delivering the real-time data required to detect and respond to rapid changes in ocean conditions [1]. However, the emergence of internet of things (IoT)

technology has opened up new possibilities in ocean monitoring and early warning systems. IoT devices—ranging from smart sensors to connected buoys—can continuously collect and transmit data on critical ocean parameters, such as temperature, salinity, wave height, and pH levels, to centralized data systems. This real-time data enables predictive modeling and timely alerts, allowing coastal communities and marine managers to prepare for potential hazards and make informed decisions.

IoT-enabled ocean monitoring systems offer several advantages, including continuous data flow, increased spatial coverage, and the ability to function autonomously in remote areas. By leveraging IoT technology, scientists and policymakers can gain a deeper understanding of oceanic trends, ecosystem health, and climate-related changes [2]. Moreover, these systems enhance early warning capabilities, facilitating rapid response measures that can protect lives, property, and natural resources. IoT-enabled devices, including smart buoys and underwater sensors, collect data on key ocean metrics such as temperature, salinity, pH levels, oxygen content, and pollution. These sensors are supported by satellite data, which provides large-scale monitoring of ocean surface conditions, including sea level rise, chlorophyll concentrations, and thermal anomalies [3]. The ocean, which makes up more than 70% of the planet's surface, is vital to biodiversity, climate regulation, and the provision of resources needed for human survival. This integrated system offers early warnings of potential oceanic hazards, facilitating proactive management of marine resources, protection of vulnerable ecosystems, and improved marine spatial planning [4]. By providing stakeholders, including policymakers, fisheries, conservationists, and coastal communities—with real-time insights, the system helps optimize sustainable ocean use, protect marine biodiversity, and reduce the impact of pollution and climate change. The implementation of IoT-based real-time monitoring systems aligns directly with SDG (sustainable Development Goal) 14, supporting targets 14.1 (reducing marine pollution), 14.2 (protecting marine ecosystems), 14.3 (minimizing ocean acidification), and 14.5 (increasing the coverage of marine protected areas). By enhancing our ability to monitor and respond to ocean health indicators, this system contributes to the sustainable management and conservation of ocean resources, ensuring the resilience and long-term sustainability of marine ecosystems [5].

This paper discusses the application of IoT in real-time ocean monitoring and early warning systems, examining how smart technology is transforming our ability to observe, predict, and respond to marine and coastal hazards. The process diagram of real-time ocean monitoring system is shown in Figure 1. Through a review of existing IoT-based monitoring frameworks and case studies, we explore the potential and challenges of deploying IoT in the ocean environment, aiming to shed light on its role in sustainable marine management and disaster resilience [6].

In addition to providing data for long-term climate change studies, real-time ocean observing systems are essential for studying ecosystems, fisheries, and water quality. Without the need for cable hookups, Sea-Bird's inductive modem (IM) system for moorings offers dependable, real-time data transmission for up to 100 instruments that may be positioned or repositioned at any depth. Standard plastic-jacketed wire rope serves as the mooring tension component and gearbox line for IM moorings. The inductive modem module (IMM) or surface inductive modem (SIM), which connects to the underwater instruments and the buoy controller [7–9], is the central component of the IM system. A large range of instruments for almost any kind of measurement can be used with the IM system. Sea-Bird produces instantaneous versions of several instruments that measure different combinations of dissolved oxygen, temperature, conductivity, pressure, and information from integrated auxiliary sensors. Devices that enable the integration of RS-232 output instruments from various manufacturers with an instant messaging system are also available.

Importance of Ocean Health and Sustainable Management

The health of our oceans is vital for the survival of marine life, the welfare of coastal communities, and the overall stability of the global climate system. Oceans are crucial in regulating Earth's climate, providing food, and supporting biodiversity, yet they face growing pressures from pollution, overfishing,

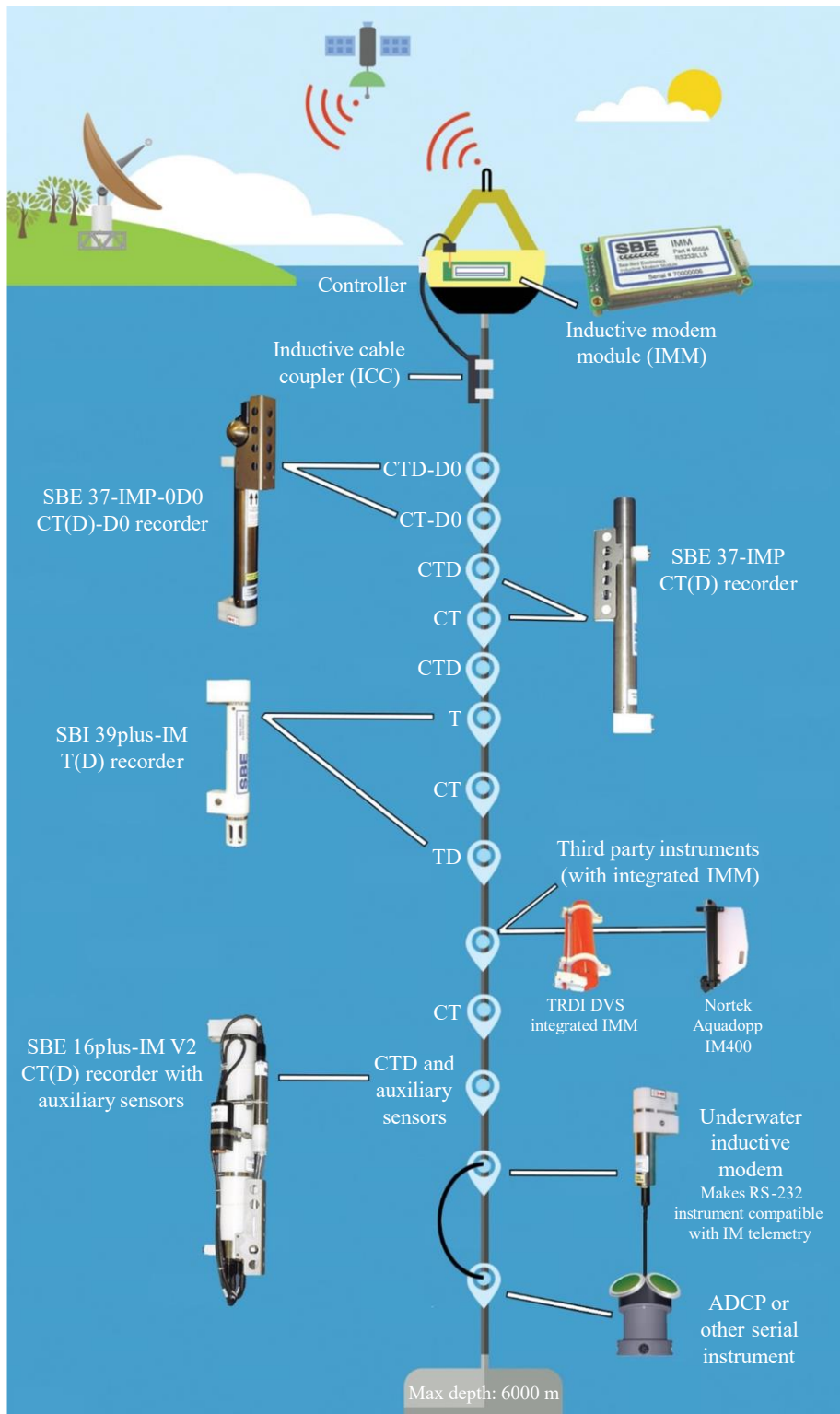


Figure 1. Process diagram of real-time ocean monitoring system.

ocean acidification, climate change, and biodiversity loss. Therefore, attaining SDG 14 Life Below Water—which focuses on protecting and exploiting oceans, seas, and marine resources sustainably to promote sustainable development—requires sustainable marine resource management. One of the main obstacles to achieving SDG 14 is the lack of real-time data on marine ecosystem health. To effectively protect and manage marine resources, we need timely, comprehensive information on ocean conditions,

ecosystem dynamics, and the impacts of human activity and climate change. This is where satellite technology and IoT sensors can have a revolutionary effect.

Key Components and Processes

Data Acquisition

- In situ sensors deploy sensors (e.g., CTD [conductivity, temperature, depth], ADCPs [acoustic Doppler current profilers]) to measure parameters like temperature, salinity, current speed, and direction.
- Remote sensing utilizes satellites to collect data on sea surface temperature, chlorophyll concentration, and other parameters [10].

Transmission of Data

- Telemetry systems use radio, satellite, or other communication routes to send data from sensors to shore stations.
- Data storage keeps raw data in a database that is both accessible and secure.

Processing Data and Ensuring Quality

- *Validation of data:* Verify the data for inconsistencies, mistakes, and outliers.
- *Data calibration:* To guarantee precise measurements, apply calibration factors.

Data Analysis and Interpretation

- *Statistical analysis:* Analyze data to identify trends, anomalies, and correlations.
- *Model development:* Develop and apply numerical models to simulate ocean processes.
- *Data visualization:* Create maps, charts, and animations to visualize data and insights.

Real-Time Monitoring and Alert Systems

- *Data dissemination:* Share processed data with relevant stakeholders (e.g., scientists, policymakers, maritime industry).
- *Alert systems:* Trigger alerts for critical events (e.g., harmful algal blooms, oil spills, extreme weather).

Decision Support and Forecasting

- *Decision support tools:* Provide tools to help decision-makers assess risks and make informed choices.
- *Forecasting models:* Use models to predict future ocean conditions and potential hazards.

Additional Considerations

- *Data security and privacy:* To safeguard sensitive data, put strong security measures in place.
- *Interoperability and data sharing:* Assure data exchange and compatibility across various systems and organizations.
- *System maintenance and calibration:* Regularly maintain and calibrate sensors and equipment.
- *Visualization and user interface:* Create intuitive user interfaces for data visualization and access.

By combining these components and processes, real-time ocean monitoring systems provide valuable insights into ocean dynamics, support sustainable marine resource management, and help mitigate risks associated with marine activities [11].

The real-time ocean monitoring and early warning system is an innovative solution that combines IoT sensors, satellite data, and advanced analytics to monitor ocean health and provide early alerts for environmental threats. Using IoT-enabled sensors deployed in oceans along with high-resolution satellite imagery, this system continuously tracks key ocean parameters such as temperature, salinity, pH, oxygen levels, pollution, and marine biodiversity.

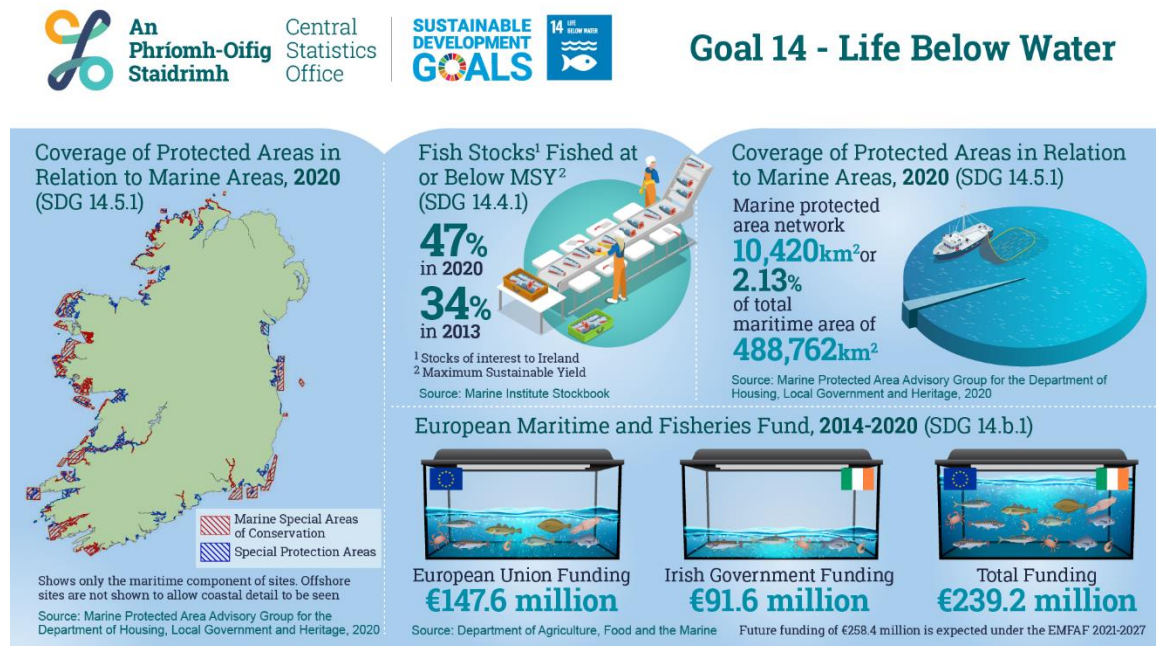


Figure 2. Sustainability development goal of life below water.

Data collected from IoT sensors and satellites is analyzed using artificial intelligence (AI) and big data analytics, facilitating predictive modeling and early detection of environmental hazards like harmful algal blooms, coral bleaching, and marine heat waves. SDG of Life Below Water is shown in Figure 2. By delivering actionable insights, the system provides early warnings for potential environmental threats, enabling timely interventions to minimize their impact on marine biodiversity, coastal economies, and human health [10].

Furthermore, this system supports sustainable fisheries management and marine spatial planning by providing accurate, real-time data on fish stocks, pollution sources, and ecosystem health. This information empowers policymakers, conservationists, and local communities to make informed decisions on marine protected area (MPA) management, fisheries regulation, and pollution control. These sensors are strategically placed on smart buoys, underwater platforms, and autonomous vehicles to capture data from various depths and locations within the ocean. Satellite-based remote sensing enables large-scale monitoring, offering valuable insights into surface conditions, such as sea surface temperature, chlorophyll concentration, and turbidity—indicators of marine productivity and environmental stress. Together, these technologies establish a comprehensive real-time monitoring network that tracks the dynamic health of marine ecosystems globally. In essence, the real-time ocean monitoring and early warning system is a powerful tool for sustainable ocean governance. By integrating IoT technology with satellite monitoring, it enables a proactive, data-driven approach to ocean conservation, helping to mitigate the risks of overfishing, pollution, and ecosystem degradation. By supporting the preservation and sustainable use of marine resources, safeguarding marine ecosystems, and maintaining the long-term health of our oceans, this project directly advances the goals of SDG 14 [12].

BACKGROUND AND MOTIVATION

Overview of Ocean Threats Pollution, Climate Change, Overfishing

The oceans are essential to life on Earth, serving as a major regulator of global climate, a source of food and economic resources, and a reservoir of biodiversity. However, human activities are exerting immense pressure on marine ecosystems, compromising their health and resilience. Three of the most severe threats to the oceans are pollution, climate change, and overfishing, each of which poses significant challenges to marine life and the communities that depend on ocean resources.

Pollution

Ocean pollution, particularly from plastic waste, chemical contaminants, and nutrient runoff, has become one of the most urgent environmental issues worldwide. Each year, millions of tons of plastic waste enter the ocean, accumulating in massive gyres like the Great Pacific Garbage Patch. Because they can be consumed by marine life and enter and disturb food chains, microplastics—which are produced when bigger plastics break down—pose an especially pernicious threat. Chemical pollutants, including pesticides, heavy metals, and industrial chemicals, accumulate in marine ecosystems, often settling in coastal waters where they damage habitats and poison marine life [13]. Nutrient runoff from agricultural practices leads to excessive growth of algae, creating “dead zones” in which oxygen levels plummet, making it nearly impossible for most marine species to survive. These pollution-related impacts degrade habitats, harm biodiversity, and reduce the quality of water, impacting both ocean health and human populations.

Climate Change

Climate change is one of the most pervasive threats to ocean ecosystems, driven largely by greenhouse gas emissions from human activities. Oceans absorb a large portion of the surplus heat produced by a warming climate, which raises ocean temperatures, modifies circulation patterns, and increases the frequency of marine heatwaves.

These changes disrupt marine life, particularly species sensitive to temperature fluctuations, such as coral reefs, which undergo bleaching events when stressed by warmer waters. The ocean also absorbs about a quarter of all carbon dioxide emissions, causing ocean acidification chemical processes that decreases pH levels and makes waters more acidic [14]. Acidification harms shell-forming organisms, like corals, mollusks, and some plankton, by dissolving their calcium carbonate structures. The loss of these organisms affects entire ecosystems, disrupting food chains and biodiversity.

Overfishing

Marine biodiversity is seriously threatened by overfishing, which also poses a significant obstacle to sustainable ocean management. Due to high global demand for seafood, many fish stocks are exploited beyond sustainable limits, leading to the depletion of key species and altering ecosystem balance. Large predatory fish, such as tuna and swordfish, have declined significantly, and populations of smaller fish are similarly under pressure due to bycatch and destructive fishing practices. Unsustainable fishing practices, including trawling and the use of large driftnets, harm not only targeted fish populations but also other marine life, including endangered species and habitats. Bycatch, or the unintentional capture of non-target species, threatens the populations of seabirds, turtles, and marine mammals while also lowering biodiversity. The depletion of fish stocks and other marine resources threatens food security, livelihoods, and the ecological stability of ocean ecosystems.

Need for Real-Time Monitoring and Early Warning Systems

Our oceans' health is essential for human populations and economies, as well as for marine biodiversity. Oceans play a central role in regulating climate, supporting global fisheries, and protecting coastal communities. However, several problems, including pollution, climate change, overfishing, and extreme weather events, are making them more and more vulnerable. These threats often develop and spread rapidly, requiring immediate response and management. Real-time monitoring and early warning systems have become essential tools in effectively addressing and managing these challenges, providing critical data that empowers decision-makers, scientists, and communities to act quickly and minimize damage.

Rapid Detection of Environmental Threats

Many ocean threats, such as harmful algal blooms, marine heatwaves, and coral bleaching events, can develop quickly and cause significant ecological and economic damage if not promptly addressed. Traditional monitoring methods often involve delayed reporting and rely on intermittent data, making it difficult to detect and respond to rapid changes in ocean conditions. Real-time monitoring, enabled by IoT sensors and satellite technology, allows for continuous data collection on key ocean

parameters—temperature, salinity, pH, oxygen levels, and pollution, among others. With this data available in real time, scientists and resource managers can detect early warning signs of potential threats, enabling timely interventions and reducing negative impacts on marine life and human health.

Enhanced Disaster Preparedness and Response

Coastal areas are particularly vulnerable to natural disasters, such as tsunamis, hurricanes, and storm surges. Real-time monitoring systems equipped with sensors for seismic activity, wave height, and atmospheric pressure can provide early warnings of such events, giving communities critical time to prepare and evacuate if needed. These early warning systems not only help protect human lives but also enable authorities to take preventative measures to safeguard infrastructure, minimize economic losses, and reduce the environmental impact of these events.

Improved Marine Resource Management

Effective management of marine resources requires accurate, up-to-date information on ecosystem health, fish stocks, and habitat conditions. Overfishing, for example, remains a major threat to global fish populations, with many stocks depleted due to unsustainable practices. Real-time monitoring systems offer detailed insights into fish behavior, migration patterns, and stock health, allowing fisheries managers to make informed, data-driven decisions about fishing quotas, seasons, and regulations. Additionally, these systems can track the health of MPAs and other critical habitats, ensuring that conservation efforts are based on current conditions and maximizing their effectiveness.

Monitoring and Managing Pollution

Marine pollution, particularly plastic waste and chemical runoff, presents significant risks to ocean ecosystems. Oil spills, sewage, and agricultural runoffs can spread rapidly, causing widespread harm to marine life and coastal areas. Real-time monitoring systems can detect increases in pollutants or nutrient levels in the water, providing an early warning to authorities and enabling swift responses to contain or remediate the pollution. This immediate detection capability helps reduce long-term environmental damage, protect water quality, and improve public health in affected areas.

Climate Change Adaptation and Ecosystem Resilience

The impacts of climate change, such as rising sea temperatures, ocean acidification, and changing weather patterns, are causing profound shifts in ocean ecosystems. Real-time monitoring allows scientists to observe these changes as they happen, enhancing understanding of how climate change affects marine life and ecosystem dynamics. Data from real-time systems supports climate modeling and helps inform adaptive management strategies that can increase ecosystem resilience, such as designing climate-resilient marine protected areas, supporting coral reef restoration, and adjusting fishing practices to account for shifting fish populations.

Data-Driven Decision-Making for Conservation and Policy

Real-time data generated by monitoring systems provides policymakers, conservationists, and researchers with reliable and up-to-date insights into ocean health. This data enables evidence-based decision-making, facilitating the creation of policies that address immediate threats while supporting long-term conservation goals. By having access to real-time information, governments and organizations can prioritize resources, respond to emerging issues more effectively, and develop policies that are responsive to current oceanic conditions. This responsiveness is especially crucial in meeting SDGs, particularly SDG 14 Life Below Water, which focuses on conserving and sustainably using oceans and marine resources.

SYSTEM DESIGN AND ARCHITECTURE

The real-time ocean monitoring and early warning system operates on a combination of advanced technologies, including IoT sensors, satellite technology, AI, and machine learning (ML) algorithms, to support the sustainable use and conservation of marine resources. SDG 14 Life Below Water, which strives to conserve and exploit the oceans, seas, and marine resources responsibly for sustainable development, is directly aligned with the system's operating philosophy.

Key Components of a Real-Time Ocean Monitoring System

A real-time ocean monitoring system requires a cohesive integration of several core components to ensure accurate, continuous data collection and timely processing.

- *IoT sensors*: These sensors collect data on critical ocean parameters such as temperature, salinity, pH, dissolved oxygen, wave height, and pollution levels. They are designed to operate autonomously and withstand harsh marine environments. Some of the commonly used sensors include:
 - *Temperature and salinity sensors* for tracking water conditions and identifying marine heatwaves.
 - *pH and CO₂ sensors* to monitor ocean acidification and chemical pollution.
 - *Turbidity and chlorophyll sensors* to assess water quality and detect algal blooms.
 - *Acoustic sensors* to monitor fish populations and detect underwater activity or disturbances.
- *Data transmission modules*: IoT sensors are equipped with wireless communication modules, such as cellular, satellite, or radio frequency transmitters, to transmit data in real time. These modules are crucial for relaying data from remote ocean locations to data centers for processing.
- *Satellite communication and remote sensing*: Satellite data complements in situ measurements by providing large-scale, high-resolution imaging and information on sea surface temperature, chlorophyll concentration, ocean color, and other surface-level indicators. Satellite communication also ensures connectivity for sensors in remote ocean regions.
- *Data processing and analytics software*: This software receives data from sensors and satellites, applies quality control filters, and processes the data for further analysis. Predictive modeling and anomaly detection are made possible by the frequent integration of ML and AI technologies into this layer.
- *Control center and visualization platforms*: Centralized dashboards and visualization platforms enable researchers and decision-makers to monitor data in real time. These platforms display ocean conditions, detect potential threats, and provide early warning alerts for immediate action.

Integration of Internet of Things Sensors with Satellite Data

To provide a comprehensive view of ocean conditions, the system integrates data collected by IoT sensors with satellite data:

- *Data fusion*: Combining in-situ sensor data with satellite observations enhances data accuracy and expands coverage. For example, IoT sensors collect detailed local data (temperature, salinity, pH) at various depths, while satellite imaging provides large-scale information on surface-level phenomena (e.g., sea surface temperature, chlorophyll concentrations).
- *Multi-resolution data synchronization*: IoT and satellite data are collected at different temporal and spatial resolutions. The system is designed to synchronize these data streams, making it possible to correlate in situ measurements with satellite imagery and improve the precision of environmental models.
- *Enhanced predictive modeling*: By integrating IoT and satellite data, the system can improve predictive accuracy for detecting and forecasting environmental threats such as marine heat waves, algal blooms, or rising sea levels. This data fusion allows for multi-dimensional analysis, creating models that consider both surface conditions and underwater ecosystem dynamics.

Data Collection Platforms Buoys, Underwater Vehicles, and Smart Platforms

To gather data from diverse locations and depths, the system deploys various platforms equipped with IoT sensors and communication modules:

- *Buoys*: Smart buoys are anchored or drift-based floating devices fitted with multiple sensors that measure surface and near-surface conditions. They are capable of continuously transmitting data in real time via satellite or radio communication. Buoys can also be equipped with solar panels to support prolonged operations.
- *Autonomous underwater vehicles (AUVs)*: AUVs, such as remotely operated submarines and drones, are used to collect data from deeper parts of the ocean. These vehicles are deployed to survey areas of interest and can collect data on parameters like temperature, salinity, and oxygen

levels at various depths. AUVs are particularly useful for exploring areas beyond the reach of fixed monitoring stations.

- *Smart platforms:* Fixed smart platforms, such as coastal observatories and offshore rigs, are also equipped with sensors for long-term monitoring of specific sites. These platforms provide stable, high-quality data for particular regions, enabling detailed assessments of localized environmental changes.

Cloud Infrastructure and Data Storage Solutions

Given the vast amount of data generated by IoT sensors and satellite imaging, cloud infrastructure and data storage are essential for handling, processing, and storing ocean monitoring data:

- *Scalable cloud storage:* Cloud storage solutions (e.g., Amazon Web Services, Microsoft Azure, Google Cloud) provide scalable and cost-effective data storage for the large data volumes collected. The use of cloud infrastructure allows for flexible data storage and easy access for authorized stakeholders.
- *Real-time data processing and analysis:* Cloud-based processing enables real-time data analysis, allowing for quick data validation, quality control, and filtering before further analytics. This infrastructure supports the application of AI and ML algorithms for predictive modeling and anomaly detection.
- *Data security and redundancy:* Cloud systems provide robust data security features, including encryption and multi-factor authentication, ensuring data privacy and protection. Redundant storage mechanisms are also implemented to prevent data loss, allowing continuous operations even in case of disruptions.
- *Data access and sharing:* Cloud platforms enable easy access to data for research institutions, government agencies, and environmental organizations. Role-based access control and application programming interface (API)-based data sharing facilitate collaboration across stakeholders, allowing them to leverage ocean monitoring data for diverse purposes.

PROPOSED METHODOLOGY

The proposed architecture for a real-time ocean monitoring and early warning system that integrates IoT sensors, satellite data, and cloud infrastructure to support continuous monitoring and timely analysis of ocean conditions is discussed below.

Sensor Layer

The sensor layer includes various IoT sensors, satellite data inputs, and data transmission modules. This layer is responsible for the initial data collection across different depths, locations, and environmental parameters.

- *IoT sensors:* To detect ocean characteristics like temperature, salinity, pH, dissolved oxygen, and pollution levels, sensors are placed on buoys, underwater vehicles, and stationary platforms. High-resolution data is recorded by these sensors at various depths and places.
- *Satellite data inputs:* Satellites provide large-scale, high-resolution surface data such as sea surface temperature, chlorophyll concentration, turbidity, and ocean color. This data is used to complement and enhance the precision of IoT sensor data. The process ocean monitoring system is shown in Figure 3.
- *Data transmission modules:* These modules transmit sensor data to shore or cloud servers via satellite communication, cellular networks, or radio frequency (RF) transmitters, depending on the location and requirements of each deployment.

Edge Computing Layer

Edge computing provides initial data processing closer to the data source, reducing latency and the need for high bandwidth to transmit raw data.

- *Local data processing:* Each platform (e.g., buoys, AUVs, and smart platforms) includes local processing units that perform basic data filtering, quality checks, and pre-processing on collected data.

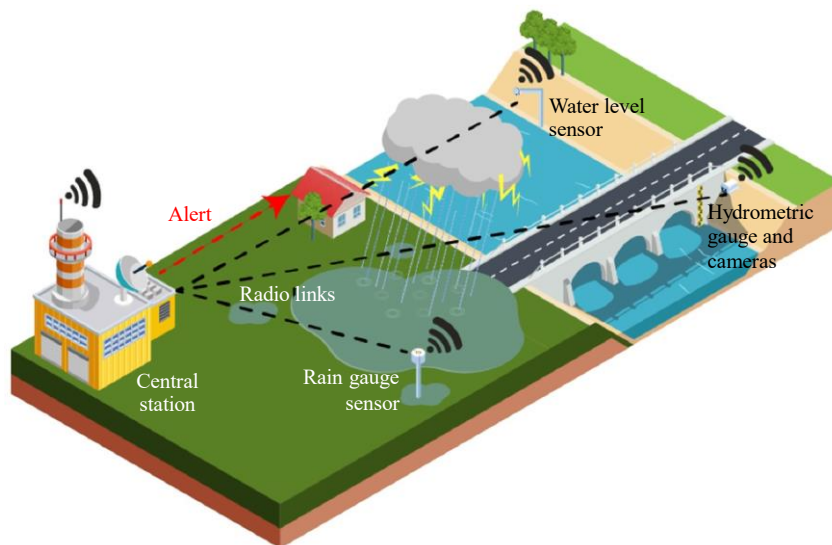


Figure 3. Process ocean monitoring system.

- *Anomaly detection and event triggering:* Edge devices are configured to detect anomalies, such as unusual temperature spikes or pollution events, and can trigger early warning alerts. This feature allows immediate actions based on local data without waiting for cloud processing.

Communication and Data Transmission Layer

This layer ensures reliable, secure data transmission from remote ocean locations to the cloud infrastructure.

- *Satellite communication:* Satellite communication is used for transmitting data from sensors located far from shore-based networks, enabling seamless connectivity even in remote ocean regions.
- *Cellular and RF networks:* In areas close to shore or where cellular networks are accessible, data can be transmitted using cellular connections. RF communication is also used for short-range data transfer between sensors and nearby platforms or vehicles.
- *Data Security protocols:* Data encryption, authentication, and network security protocols protect data integrity and privacy as it is transmitted from the sensors to the cloud.

Cloud Infrastructure Layer

The cloud infrastructure is the backbone of the system, providing scalable data storage, processing, and analytics capabilities.

- *Data storage solutions:* Large volumes of sensor and satellite data are stored in a scalable cloud storage solution. Redundant storage options ensure data availability and protection against data loss.
- *Big data processing framework:* Cloud-based data processing frameworks (e.g., Apache Spark, Hadoop) enable fast, large-scale data processing, supporting real-time data validation, transformation, and aggregation.
- *Data analytics and machine learning:* Advanced analytics and machine learning models run on the cloud, enabling predictive modeling and identification of patterns that may signal environmental threats (e.g., algal blooms, coral bleaching, or fish stock depletion).

Application Layer

The application layer provides a user interface for researchers, decision-makers, and environmental agencies, allowing them to visualize, analyze, and respond to the data.

- *Centralized dashboard:* A real-time dashboard displays ocean data, alerts, and trend analysis. Users can monitor ocean conditions, detect potential threats, and track key environmental parameters across various locations.

- *Early warning alert system:* Based on predefined thresholds and AI algorithms, alerts are sent to relevant stakeholders via email, SMS, or mobile applications, enabling prompt actions.
- *Reporting and data visualization tools:* Data visualization tools (such as GIS [geographic information system] maps and time-series graphs) make it easy to interpret trends, explore historical data, and understand the spatial distribution of key ocean parameters.
- *APIs for data access:* APIs allow external organizations, research institutes, and governmental bodies to access the system's data for research, policy-making, and public awareness initiatives. Role-based access control ensures secure data sharing.

Data Management and Governance Layer

This layer governs data quality, access control, and compliance with environmental data policies and privacy standards.

- *Data quality assurance:* Quality checks ensure that incoming data meets reliability standards. Machine learning models can detect and filter out erroneous data.
- *Data access control:* Role-based access ensures that only authorized personnel can access sensitive data, with different levels of access provided to researchers, policymakers, and public users.
- *Compliance and regulatory adherence:* The system complies with international standards and regulations for data privacy, security, and environmental monitoring, ensuring ethical and legal data management.

Real-time ocean monitoring and early warning systems, powered by IoT technology, represent a transformative approach to addressing the pressing challenges facing our oceans. By integrating IoT sensors, satellite data, and cloud-based data processing, these systems provide continuous, detailed insights into ocean health and environmental threats. The ability to collect, analyze, and respond to real-time data on parameters such as temperature, pH, pollution levels, and biodiversity offers unprecedented opportunities for marine conservation, disaster preparedness, and sustainable resource management. As our oceans face increasing pressures from climate change, pollution, and overfishing, real-time monitoring provides the actionable intelligence needed to make informed, timely decisions. Early warning alerts can enable governments, researchers, and conservation organizations to detect harmful events, respond proactively, and implement adaptive strategies to safeguard marine ecosystems. Additionally, the data-driven insights gained through this technology support the achievement of SDG 14, promoting the conservation and sustainable use of marine resources.

CONCLUSION

In conclusion, IoT-enabled ocean monitoring systems are vital tools in the pursuit of sustainable ocean governance. They empower stakeholders to proactively protect and manage marine environments, mitigate the impacts of human activities, and promote the resilience of ocean ecosystems. As technology and data analytics continue to evolve, these systems will become even more effective, paving the way for a healthier, more sustainable future for our oceans. The real-time ocean monitoring and early warning system uses IoT, satellite technology, and AI/ML provides a transformative solution for addressing the urgent challenges of ocean conservation and sustainable marine resource management. This project offers a comprehensive framework that enhances real-time ocean monitoring, enabling early detection of potential marine hazards such as algal blooms, temperature anomalies, and pollution, which can significantly impact marine biodiversity, fisheries, and coastal economies. By integrating predictive analytics powered by AI and ML, the system can forecast future oceanic conditions and deliver early warnings, empowering stakeholders to take timely, informed action. Furthermore, the inclusion of mobile app integration ensures that critical data and alerts are accessible to local communities, fishing communities, and policymakers, facilitating faster decision-making at the grassroots level. The system's open-data platform promotes international collaboration by allowing for the sharing of oceanic data across countries, supporting global efforts in marine conservation, climate resilience, and sustainable fisheries management. This aligns directly with SDG 14 Life Below Water,

as the system aids in the protection of marine ecosystems and ensures the sustainable use of ocean resources. In conclusion, this project exemplifies how the integration of cutting-edge technologies can drive significant progress toward preserving ocean health and biodiversity while supporting the livelihoods of coastal communities and global sustainability goals.

REFERENCES

1. Liu Y, Hassan KA, Karlsson M, Pang Z, Gong S. A data-centric internet of things framework based on azure cloud. *IEEE Access*. 2019; 7: 53839–53858.
2. Wang Y, Lu Z, Sheng Y, Zhou Y. Remote sensing applications in monitoring of protected areas. *Remote Sensing*. 2020; 12 (9):1370.
3. Zulkifli CZ, Garfan S, Talal M, Alamoodi AH, Alamleh A, Ahmaro IY, Sulaiman S, Ibrahim AB, Zaidan BB, Ismail AR, Albahri OS. IoT-based water monitoring systems: a systematic review. *Water*. 2022; 14 (22): 3621.
4. Alotaibi E, Nassif N. Artificial intelligence in environmental monitoring: in-depth analysis. *Discover Artif Intell*. 2024; 4 (1): 84.
5. Chi H, Du Y, Brett PM. Design of a marine environment monitoring system based on the internet of things. *J Coast Res*. 2020; 110 (SI): 256–260.
6. Esposito M, Palma L, Belli A, Sabbatini L, Pierleoni P. Recent advances in internet of things solutions for early warning systems: a review. *Sensors*. 2022; 22 (6): 2124.
7. Garrido-Momparler V, Peris M. Smart sensors in environmental/water quality monitoring using IoT and cloud services. *Trends Environ Anal Chem*. 2022; 35: e00173.
8. Kavanaugh MT, Bell T, Catlett D, Cimino MA, Doney SC, Klajbor W, Messié M, Montes E, Muller-Karger FE, Otis D, Santora JA. Satellite remote sensing and the marine biodiversity observation network. *Oceanography*. 2021; 34 (2): 62–79.
9. Mahrad BE, Newton A, Icely JD, Kacimi I, Abalansa S, Snoussi M. Contribution of remote sensing technologies to a holistic coastal and marine environmental management framework: a review. *Remote Sensing*. 2020; 12 (14): 2313.
10. Ranganathan CS, Raman R, Parikh S, Rajesh S, Meenakshi R, Muthulekshmi M. IoT applications in marine monitoring: protecting ocean health and biodiversity. In: *2023 International Conference on Sustainable Communication Networks and Application (ICSCNA)*, Theni, India, November 15–17, 2023. pp. 305–310.
11. Glasgow HB, Burkholder JM, Reed RE, Lewitus AJ, Kleinman JE. Real-time remote monitoring of water quality: a review of current applications, and advancements in sensor, telemetry, and computing technologies. *J Exp Marine Biol Ecol*. 2004; 300 (1–2): 409–448.
12. Pwavodi J, Ibrahim AU, Pwavodi PC, Al-Turjman F, Mohand-Said A. The role of artificial intelligence and IoT in prediction of earthquakes. *Artif Intell Geosci*. 2024; 5: 100075.
13. López-Ramírez GA, Aragón-Zavala A. Wireless sensor networks for water quality monitoring: a comprehensive review. *IEEE Access*. 2023; 11: 95120–95142.
14. Salcedo-Sanz S, Ghamisi P, Piles M, Werner M, Cuadra L, Moreno-Martínez A, Izquierdo-Verdiguier E, Muñoz-Marí J, Mosavi A, Camps-Valls G. Machine learning information fusion in Earth observation: a comprehensive review of methods, applications and data sources. *Inform Fusion*. 2020; 63: 256–272.