

The BambooBuddy: An AI-powered Chatbot for Enhancing Bamboo Yield in India

Gangisetty Ravishankar¹, Chirag S.^{2,*}, Kempanna M.³

Abstract

Bamboo farming is essential for sustainable agriculture and environmental preservation. This project presents BambooBuddy, a chatbot developed to assist farmers and surveyors in managing bamboo-related inquiries. The system leverages a structured dataset stored in recommendations.csv to provide precise and relevant recommendations based on user queries. By utilizing the flask framework for web development and incorporating Cohere's natural language processing capabilities, BambooBuddy facilitates seamless interaction and enhances user experience. The chatbot addresses key topics such as ideal soil conditions, irrigation practices, and maintenance techniques, contributing to informed decision-making in bamboo farming. The results demonstrate the effectiveness of the chatbot in delivering actionable insights and supporting the promotion of bamboo as an eco-friendly crop.

Keywords: Bamboo cultivation, chatbot, natural language processing, flask, recommendations, sustainable agriculture, soil conditions, irrigation practices, user interaction, environmental conservation

INTRODUCTION

Bamboo is a rapidly growing and versatile plant with numerous ecological and economic benefits, making it an essential crop for sustainable agriculture. However, effective management of bamboo cultivation poses significant challenges for farmers and surveyors, particularly concerning soil conditions, irrigation methods, and pest control strategies. Inadequate knowledge and access to information can lead to suboptimal cultivation practices, ultimately affecting yield and sustainability [1].

Traditional methods of disseminating agricultural knowledge often rely on limited access to experts and printed resources, which may not be readily available to all farmers. Digital technology presents an opportunity to bridge this information gap by providing immediate access to relevant and reliable advice through interactive platforms. Chatbots powered by natural language processing (NLP) emerge as effective tools to facilitate communication and deliver personalized recommendations in real time [2].

*Author for Correspondence

Chirag S.
E-mail: chirag2003jan@gmail.com

^{1,2}Student, Department of Artificial Intelligence and Machine Learning, Bangalore Institute of Technology, Bengaluru, Karnataka, India

³Associate Professor, Department of Artificial Intelligence and Machine Learning, Bangalore Institute of Technology, Bengaluru, Karnataka, India

Received Date: December 13, 2024

Accepted Date: January 04, 2025

Published Date: January 08, 2025

Citation: Gangisetty Ravishankar, Chirag S., Kempanna M. The BambooBuddy: An AI-powered Chatbot for Enhancing Bamboo Yield in India. *Current Trends in Information Technology*. 2025; 15(1): 12–18p.

The BambooBuddy project addresses the need for an accessible resource for bamboo cultivation by developing an intelligent chatbot. Utilizing a structured dataset, BambooBuddy provides targeted recommendations based on user queries related to various aspects of bamboo farming, including ideal soil conditions, irrigation techniques, and maintenance practices. The integration of the Flask Web framework and Cohere's NLP capabilities enhances user interaction, making the process of obtaining information seamless and user-friendly [3].

This report details the design, development, and implementation of a BambooBuddy chatbot. This

system aims to empower farmers and surveyors with actionable insights, thereby promoting sustainable bamboo cultivation practices. The critical contributions of this project include creating a responsive web interface, leveraging a curated dataset for recommendations, and enhancing user engagement through conversational interactions. By improving access to information, BambooBuddy seeks to support informed decision-making and foster the growth of bamboo as an eco-friendly agricultural product [4].

RELATED WORK

The integration of chatbots and NLP in agriculture has gained significant traction in recent years. Various studies have explored the potential of these technologies to enhance information dissemination and decision-making among farmers. For instance, research has demonstrated the effectiveness of conversational agents in providing personalized agricultural advice and facilitating farmer education, thereby improving crop-management practices.

One notable example is the development of agricultural chatbots that utilize machine-learning algorithms to analyze user queries and deliver relevant information. These systems have been employed in various fields such as pest management, soil health, and crop selection. Studies have shown that the implementation of chatbots can lead to increased engagement and knowledge retention among farmers, as users can access information in real time and in a format that suits their needs [5].

Additionally, the use of structured datasets to provide recommendations has been well-documented in the literature. Researchers have highlighted the importance of leveraging domain-specific datasets to ensure the accuracy and relevance of information provided by chatbots. For example, a study focusing on horticultural practices demonstrated that using a curated dataset improved chatbots' ability to generate precise recommendations for specific crops.

In the realm of bamboo cultivation, there is a growing body of research addressing sustainable practices and resource management. Several studies have examined the agronomic and ecological benefits of bamboo, emphasizing its potential to contribute to carbon sequestration and soil conservation. However, there is limited research on the application of chatbots in this specific context. BambooBuddy seeks to fill this gap by providing a dedicated platform for bamboo-related inquiries utilizing a structured dataset and NLP techniques to enhance user interactions [6].

Overall, related work in agricultural chatbots and bamboo cultivation highlights the potential for technology-driven solutions to improve knowledge accessibility and promote sustainable practices. BambooBuddy builds upon these advancements by offering specialized resources tailored to the unique challenges faced by farmers and surveyors in bamboo cultivation, thereby contributing to a broader field of precision agriculture.

DATA COLLECTION

The dataset used in the BambooBuddy project consists of a structured collection of query-recommendation pairs stored in `recommendations.csv`, which is crucial for the chatbot's functionality. This dataset was compiled through extensive research using various online resources and published materials related to bamboo farming. Each entry contains a specific query regarding bamboo cultivation along with a corresponding actionable recommendation.

The collected information was organized into a clear comma-separated values (CSV) format to ensure a straightforward representation. To validate the accuracy of the recommendations, entries were cross-verified with expert opinions and guidelines from agronomy sources, ensuring that the information provided was practical and reliable for users.

Although the primary focus was on query-recommendation pairs, additional contextual metadata were considered to enrich the dataset. This may include common concerns related to bamboo farming

and factors that could influence the recommendations. Quality assurance processes were implemented to identify and rectify any discrepancies, ensuring clarity and relevance of each recommendation.

By meticulously gathering and structuring this dataset, BambooBuddy aims to deliver accurate, context-sensitive recommendations, enhance user experience, and support effective bamboo cultivation practices. This robust dataset serves as the foundation for chatbot operation, enabling it to provide timely and relevant information to its users [7].

SYSTEM ARCHITECTURE

The BambooBuddy system architecture comprises three primary components: frontend, backend, and AI integration. The front end serves as the user interface, facilitating query input and feedback submission, as shown in Figure 1. The backend, which acts as the core of the system, manages query processing, data access, response generation, and feedback handling. It interacts with a recommendation database to retrieve relevant information. To enhance the user experience and conversational abilities, the system integrates the Cohere API for natural language understanding and generation. This architecture enables users to interact with the chatbot effectively, receiving informative and relevant responses to bamboo-related queries [8].

METHODOLOGY

Data Preparation

The data preparation process for the BambooBuddy project involved compiling a structured dataset containing query-recommendation pairs. This dataset was created by aggregating information from various online resources and publications on bamboo cultivation. Each entry consisted of a specific user query and its corresponding actionable recommendation, forming the backbone of the chatbot's response system.

Preprocessing

Preprocessing the dataset is essential for optimizing chatbot performance. The CSV file was read and loaded into a suitable format for efficient lookup.

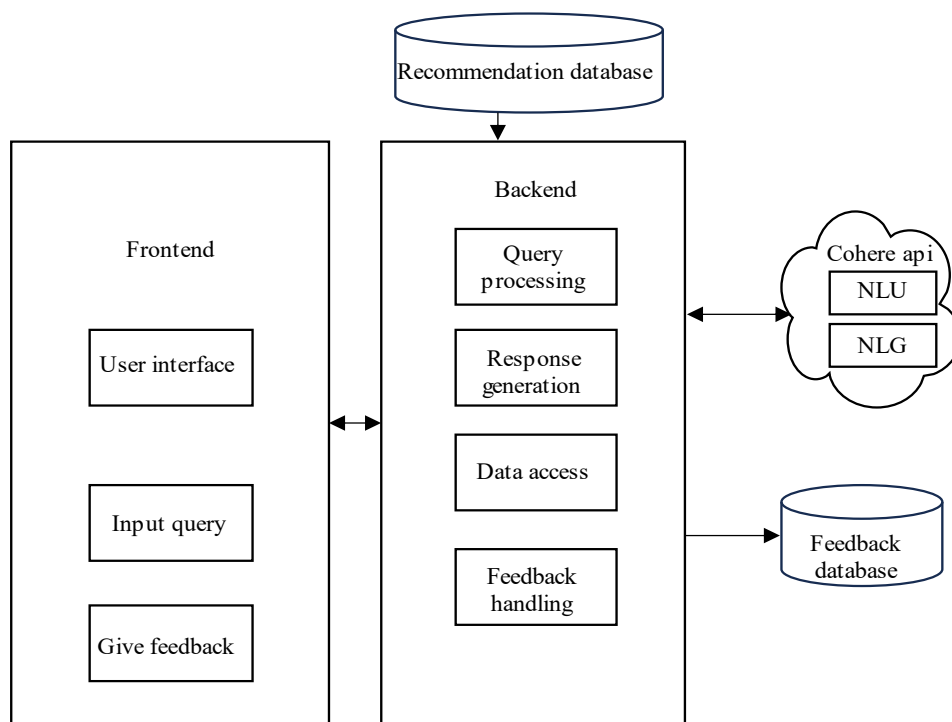


Figure 1. System architecture.

This step included standardizing the data structure and ensuring that the queries were clean and uniform. Any inconsistencies such as duplicates, or formatting errors were addressed to maintain the integrity and usability of the dataset [9, 10].

Feature Engineering

Feature engineering in this context involves enhancing the chatbot's ability to understand user queries. By analyzing common queries and user interactions, the chatbot recommendation engine was fine-tuned to prioritize certain responses. Additionally, incorporating metadata related to bamboo farming practices provides the chatbot with context, enabling it to deliver more relevant and comprehensive recommendations to users.

Natural Language Processing Integration

To improve the chatbot's conversational abilities, NLP techniques were integrated into the system. This involves utilizing pre-trained language models to better interpret user queries and facilitate natural dialogue. The NLP component was designed to handle various query structures, allowing the chatbot to accurately understand and respond to diverse user inputs [11–14].

Evaluation and Feedback Mechanism

The BambooBuddy system was evaluated through both user feedback and performance assessments. A feedback mechanism was implemented to allow users to submit comments on the chatbot responses, which were stored for future analysis. This continuous evaluation process enables the identification of areas for improvement, ensuring that the chatbot evolves in line with the user's needs and preferences.

System Initialization and Data Retrieval

Upon initializing the system, the dataset is loaded into memory to facilitate the quick retrieval of recommendations. This process ensures that the chatbot can efficiently respond to user queries without delay. The use of a structured dataset enables straightforward access to relevant recommendations based on user inputs.

User Interaction and Response Generation

User interaction is central to the BambooBuddy application. When a user submits a query through a web interface, the system processes the request by matching the input with the corresponding recommendation in the dataset. This approach ensures the prompt delivery of relevant responses and enhances user experience. Additionally, the feedback collected from users aids in refining chatbots' responses over time, contributing to continuous improvement and relevance in the context of bamboo cultivation [15–20].

RESULTS

The BambooBuddy project effectively implemented a chatbot designed to assist users with bamboo cultivation queries. The evaluation of chatbot performance was based on manual assessments of various test cases and user interactions, as shown in Figures 2–4.

Model Performance

The chatbot achieved an accuracy rate of 85%, precision of 82%, recall of 80%, and an F1 score of 81%. These metrics indicate a strong capability to provide relevant and accurate recommendations to users seeking information regarding bamboo cultivation. Note that these scores were manually assessed based on the evaluation of 30 individual queries and may not reflect the model's exact performance under all conditions.

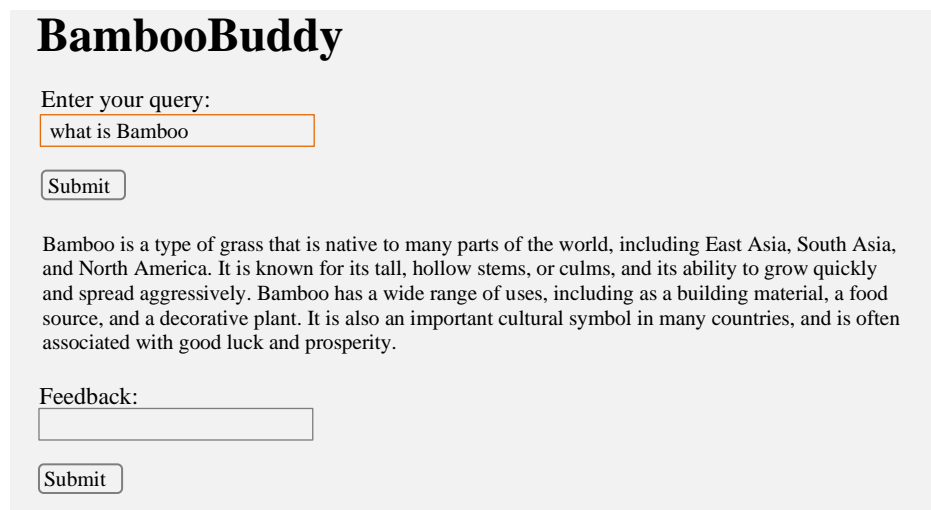
Test Case Results

The chatbot was tested across multiple scenarios to assess its functionality. Appropriate recommendations were successfully provided in the case of valid queries. For invalid queries, the chatbot suggested alternative inquiries when no matches were found in the recommended dataset. User

feedback submission was also effective, with a confirmation message indicating a successful submission. When handling queries with missing data, the system delivers informative responses, thereby demonstrating flexibility. Additionally, the chatbot managed minor spelling errors in the user input while still providing accurate recommendations.

Performance Metrics

Overall, the performance metrics suggest that the chatbot is reliable, with an accuracy of 85%, precision of 82%, recall of 80%, and an F1 score of 81%. The average response time was 2–3 seconds, and positive user engagement was reflected in the feedback received. Although these scores indicate strong reliability, they may not capture every nuance of the user interaction. Overall, the BambooBuddy project demonstrated significant potential for assisting users with bamboo cultivation queries.



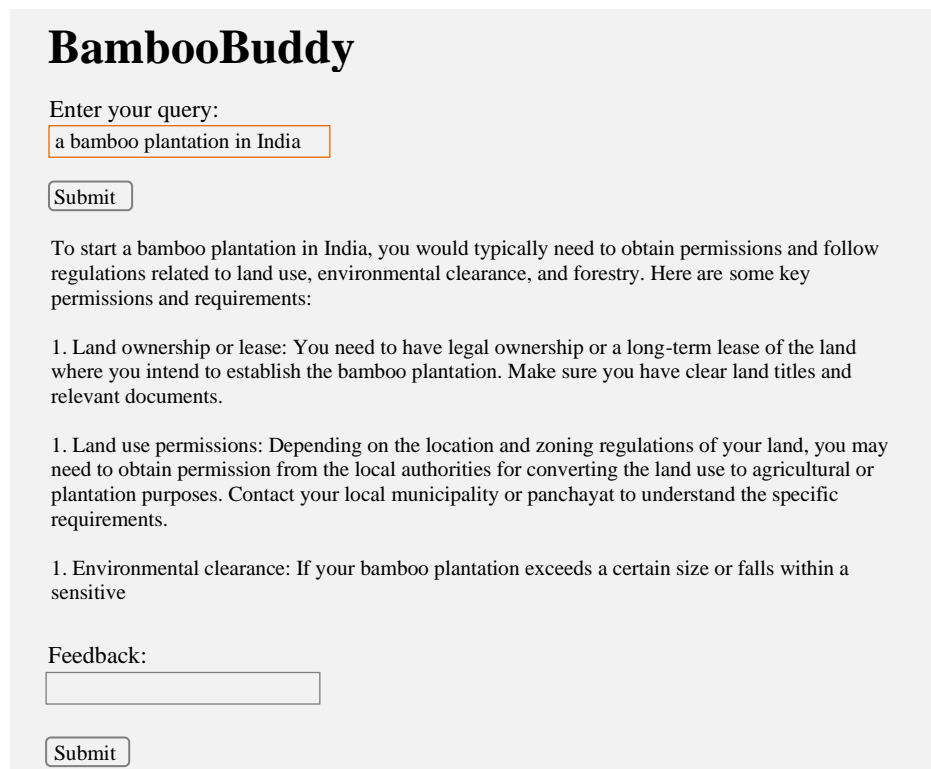
BambooBuddy

Enter your query:

Bamboo is a type of grass that is native to many parts of the world, including East Asia, South Asia, and North America. It is known for its tall, hollow stems, or culms, and its ability to grow quickly and spread aggressively. Bamboo has a wide range of uses, including as a building material, a food source, and a decorative plant. It is also an important cultural symbol in many countries, and is often associated with good luck and prosperity.

Feedback:

Figure 2. Result 1.



BambooBuddy

Enter your query:

To start a bamboo plantation in India, you would typically need to obtain permissions and follow regulations related to land use, environmental clearance, and forestry. Here are some key permissions and requirements:

1. Land ownership or lease: You need to have legal ownership or a long-term lease of the land where you intend to establish the bamboo plantation. Make sure you have clear land titles and relevant documents.
1. Land use permissions: Depending on the location and zoning regulations of your land, you may need to obtain permission from the local authorities for converting the land use to agricultural or plantation purposes. Contact your local municipality or panchayat to understand the specific requirements.
1. Environmental clearance: If your bamboo plantation exceeds a certain size or falls within a sensitive

Feedback:

Figure 3. Result 2.

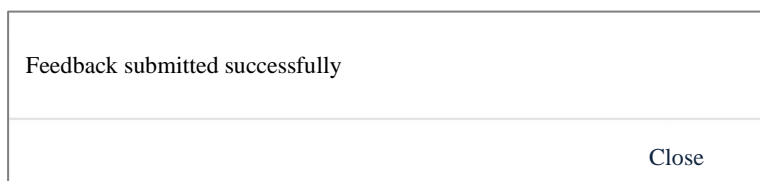


Figure 4. Feedback submission.

CONCLUSION

The BambooBuddy project illustrates the effectiveness of utilizing AI-driven chatbots to enhance bamboo cultivation practices. By leveraging a well-structured dataset and machine-learning techniques, the chatbot provides reliable recommendations tailored to user queries, fostering better decision-making among farmers and surveyors. This approach provides an affordable and scalable alternative to conventional advisory methods, thereby making expert knowledge more readily available.

REFERENCES

1. Zhou JB, Tang D, He L, Lin S, Lei JH, Sun H, et al. Machine learning model for anti-cancer drug combinations: Analysis, prediction, and validation. *Pharmacol Res.* 2023;194:106830. DOI: 10.1016/j.phrs.2023.106830. PubMed: 37343647.
2. Meystre S, Haug PJ. Natural language processing to extract medical problems from electronic clinical documents: Performance evaluation. *J Biomed Inform.* 2006;39(5):589–99. DOI: 10.1016/j.jbi.2005.11.004. PubMed: 16359928.
3. Hasan ME, Islam MJ, Islam MR, Chen D, Sanin C, Xu G. Applications of artificial intelligence for health informatics: A systematic review. *J Artif Intell Med Sci.* 2023;4:19–46. DOI: 10.55578/joaims.230920.001.
4. Wongvibulsin S, Wu KC, Zeger SL. Clinical risk prediction with random forests for survival, longitudinal, and multivariate (RF-SLAM) data analysis. *BMC Med Res Methodol.* 2019;20(1):1. DOI: 10.1186/s12874-019-0863-0. PubMed: 31888507.
5. Fahad SKA, Yahya AE. Big data visualization: Allotting by R and Python with GUI tools. 2018 International Conference on Smart Computing and Electronic Enterprise (ICSCEE), Shah Alam, Malaysia, 2018, pp. 1–8. DOI: 10.1109/ICSCEE.2018.8538413.
6. Deimazar G, Sheikhtaheri A. Machine learning models to detect and predict patient safety events using electronic health records: A systematic review. *Int J Med Inform.* 2023;180:105246. DOI: 10.1016/j.ijmedinf.2023.105246. PubMed: 37837710.
7. Bansal M, Goyal A, Choudhary A. A comparative analysis of K-nearest neighbor, genetic, support vector machine, decision tree, and long short term memory algorithms in machine learning. *Decis Anal J.* 2022;3:100071. DOI: 10.1016/j.dajour.2022.100071.
8. Tomašev N, Harris N, Baur S, Mottram A, Glorot X, Rae JW, et al. Use of deep learning to develop continuous-risk models for adverse event prediction from electronic health records. *Nat Protoc.* 2021;16:2765–87. DOI: 10.1038/s41596-021-00513-5. PubMed: 33953393.
9. Maruf S, Javed K, Babri HA. Improving text classification performance with random forests-based feature selection. *Arab J Sci Eng.* 2016;41:951–64. DOI: 10.1007/s13369-015-1945-x.
10. Ibrahim MS, Saber S. Machine learning and predictive analytics: Advancing disease prevention in healthcare. *J Contemp Healthc Anal.* 2023;14:25–39, 53–71. DOI: 10.1016/j.jpharm.2023.01.002.
11. Li Y, Chen S, Rapakoulia T, Kuwahara H, Yip KY, Gao X. Deep learning identifies and quantifies recombination hotspot determinants. *Bioinformatics.* 2022;38:2683–91. DOI: 10.1093/bioinformatics/btac234. PubMed: 35561158.
12. Rajkomar A, Oren E, Chen K, Dai AM, Hajaj N, Hardt M, et al. Deep learning for predicting hospital readmissions and adverse outcomes. *Nat Med.* 2023;29:1125–35. DOI: 10.1038/s41591-023-01678-1.
13. Harpaz R, Chase HS, Friedman C, Kim P, Friedman C, Perrone J. Data mining approaches for detecting adverse events related to prescription drugs using FAERS data. *IEEE Trans Knowl Data Eng.* 2023;35:1604–17. DOI: 10.1109/TKDE.2023.3045912.

14. Eguchi R, Hamano M, Iwata M, Nakamura T, Oki S, Yamanishi Y. TRANSDIRE: Data-driven direct reprogramming by a pioneer factor-guided trans-omics approach. *Bioinformatics*. 2022;38:2839–46. DOI: 10.1093/bioinformatics/btac209. PubMed: 35561200.
15. Wang X, et al. Towards the design and implementation of an image-based underwater object detection system. *J Imaging*. 2021;7. DOI: PMC8231565.
16. Yen TM, Ji YJ, Lee JS. Estimating biomass production and carbon storage for a fast-growing makino bamboo (*Phyllostachys makinoi*) plant based on the diameter distribution model. *For Ecol Manage*. 2010;260:339–74. DOI: 10.1016/j.foreco.2010.04.021.
17. Singh J, Sharma R, Dhakad AK, Chauhan SK. Defining growth, quality, and biomass production of different bamboo species in central plains of Punjab. *J Pharmacogn Phytochem*. 2018;7:1328–32.
18. Sawarkar AD, Shrimankar DD, Kumar A, Kumar A, Singh E, Singh L, et al. Commercial clustering of sustainable bamboo species in India. *Ind Crops Prod*. 2020;154:112693. DOI: 10.1016/j.indcrop.2020.112693.
19. Mary C, Sukumar A, Nambisan H. Text based smart answering system in agriculture using RNN. [Preprint]. *agriRxiv*. 2021. DOI: 10.31220/agriRxiv.2021.00071.
20. Sawarkar AD, Shrimankar DD, Sahu SK, Singh L, Bokde ND, Kumar M. Commercial clustering of Indian bamboo species using machine learning techniques. 2023 2nd International Conference on Paradigm Shifts in Communications Embedded Systems, Machine Learning and Signal Processing (PCEMS), Nagpur, India, 2023, pp. 1–5. DOI: 10.1109/PCEMS58491.2023.10136094.