

## Streetlight Automation and Fault Detection

Sangeetha S.<sup>1,\*</sup>, Ganesh G.<sup>2</sup>, Jeeva R.<sup>2</sup>, Kavın K.<sup>2</sup>, Suriya S.<sup>2</sup>

### Abstract

*This study addresses the concept, design, and implementation of an automated streetlighting system that uses Arduino technology for improving energy saving and detecting faults across the lamp. The system consists of several sensors: Light Dependent Resistors (LDR) as well as Infrared (IR) sensors, which are employed in the management to control the lighting of the streets and posts in relation to surroundings and other conditions. Here, we use IR sensors for measuring ambient light, which determines whether it is day or night. At nighttime, the system changes the lamp posts to a dim state, at the same time it monitors the pedestrian and vehicle movement. If the movement occurs, the respective lamp must glow at its full intensity and check for the fault over the lamp. Since this system identifies faults in the streetlamps in real time and provides accurate data on defective lamps. With this diagnosing system, we can easily manage the healthy state of the lamps, and it results in increased maintenance of the lighting system. Using a streetlight automation system, which provides fault detection and dynamic adjustment of brightness, ensures enhanced public safety and infrastructure management in cities in a scalable, economical, and resource-efficient way.*

**Keywords:** Arduino-uno, design, IR sensors, LDR, lighting system

### INTRODUCTION

The goal of this project is to create a smart, autonomous streetlighting system for energy conservation and to ensure safety in public spaces by automatically adjusting light levels according to the ambient light and areas of activity. For instance, many traditional systems of streetlighting often remain high-intensity for a large part of the night when there is no pedestrian and vehicle movement, which also raises maintenance costs. To improve energy efficiency, lighting control would be managed through sensors that are integrated in to the system making it more suitable to be used in both rural and urban environments. The integration of the IoT, on the other hand, will spur the development of new applications that use such devices as home appliances, recognition cameras, control sensors, actuators, displays, automobiles, and so on, creating access to, and connecting with, a wide range of devices, and utilizing the vast amount and variety of data that such devices generate to provide new services to customers, companies, and governments. The gravity of the alterations of things in the real world is acquired by the developed system through the utilization of a daytime/nighttime sensor and LDRs

integrated together with infrared sensors, which in turn control five LED poles. Once the ambient light is brightened up, the day and night sensor make a recollection of this activity to establish whether it is daytime or night. The case is slightly different during the night, as the LEDs are turned on but at a low degree of brightness that can ensure visibility with intent to spare power consumption [1]. The minimum brightness ensures that lights are switched on when others are off, and once the lights are switched on, the LDRs are able to assess the effectiveness of each post. Any show that does not meet the minimum requirements is tagged as faulty. IR sensors have been integrated into this system, and their function is to detect motion [2, 3]. The area

#### \*Author for Correspondence

Sangeetha S.  
E-mail: sangeetha@kce.ac.in

<sup>1</sup>Professor, Department of Computer Science and Engineering, Karpagam College of Engineering, Coimbatore, Tamil Nadu, India

<sup>2</sup>UG Scholar, Department of Computer Science and Engineering, Karpagam College of Engineering, Coimbatore, Tamil Nadu, India

Received Date: March 27, 2025

Accepted Date: March 29, 2025

Published Date: April 08, 2025

**Citation:** Sangeetha S., Ganesh G., Jeeva R., Kavın K., Suriya S. Streetlight Automation and Fault Detection. International Journal of Electronics Automation. 2025; 3(1): 12–20p.

---

controlled by the LEDs has adjustable sensitivity. If the IR sensors detect the movement, this system automatically increases the brightness of the forthcoming lamp posts so as to enhance visibility during that time. Such an implementation increases the overall safety of pedestrians and vehicles while also ensuring that there is no continuous full brightness on the pole's LEDs. When the activity stops, the LEDs dim, thus saving energy [4]. This project effectively employs smart technology that can improve outdoor lighting and expand or contract in size. Lower operating costs will be achieved by real-time monitoring of each individual post's condition as the developed system decreases power consumption. As cities seek to improve modern infrastructure with energy-efficient solutions, this streetlighting system is one part of such a change [5].

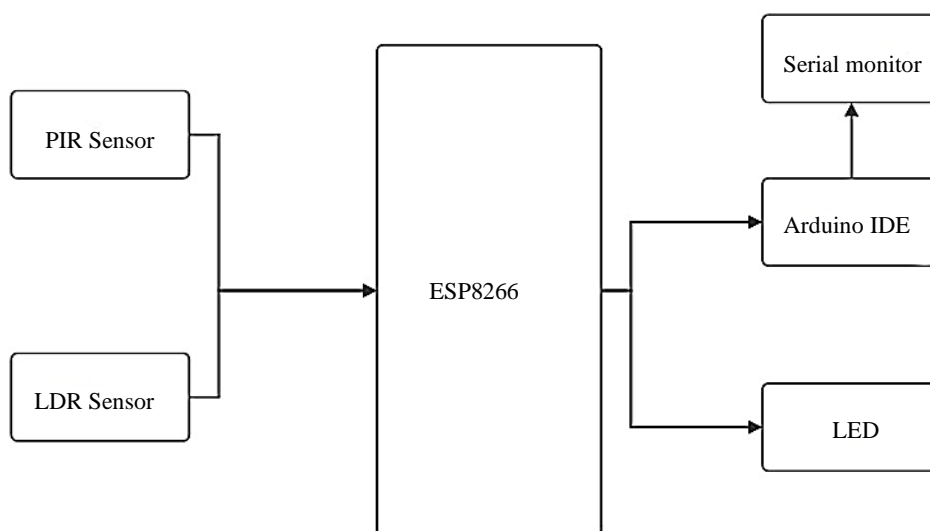
## LITERATURE REVIEW

Smart streetlighting is what various cities are trying to implement in order to decrease energy usage and the infrastructure needed to implement them. Otherwise, traditional modes of implementation consume high energy efficiency, and they remain at maximum brightness during night hours when there is no need for them. As the population increases, we concentrate in the rural and urban areas with the desired system, which is able to use energy efficiently while ensuring the safety and security of the citizens [6]. This study reviews recent advancements and emerging technologies in smart streetlighting, including sensors, their integration, control algorithms, energy management devices, and real-life examples of streetlights of this kind. These streetlight automation systems are the next-generation lighting systems focused on decreasing energy usage and economical cost on maintenance as well as improving safety in the cities. In order to compare to the traditional lighting system, which operates at full brightness for the night hours, our system changes the lamp state based on the environmental changes. These systems automatically adjust the intensity of light by the detection of any movement over the area of the post; for adjusting intensity, we use dimmers and other communication devices when necessary [7]. Our system of streetlighting also possesses the IoT connectivity that monitors and manages the lamp conditions continuously. This allows for real-time status reports as well as data collection. Some of the studies on streetlights are works based on monitoring the area for pedestrians through devices such as infrared sensors [8], or cellphone signal scanners [5], but these lights, and many other papers on automating streetlights focus on controlling streetlights based on the presence of a vehicle. This analytically controlled mechanism assesses the level of energy consumption and transforms it into an energy-efficient solution that cuts carbon emissions, thus making it an economically sound solution for urban and rural settings. The control of smart streetlights with the help of devices is aimed at one of the plans, the access control. Oftentimes LEDs are the best choice, as they are efficient and long-lasting, as they use significantly smaller amounts of power compared to incandescent bulbs. Some other streetlights use solar panels and batteries to reduce the dependency on an electricity grid. By the use of solar panels, it captures the energy during the day and stores it in batteries and uses it at nighttime; thus, it solves the problem of unstable power grids. These articles add to the literature by documenting changes such as an increase in oil-sensitive traffic [9, 10], and oil-sensitive traffic systems [11, 12]. The system proposed by Sri *et al.* offers an account of a smart streetlighting system that utilizes sensors and controllers in order to turn on the lights only if vehicles are present [13]. This technique seeks to minimize the waste of energy and to enhance the efficiency of the operational processes by the control algorithms for smart streetlighting systems, which seek to save energy and protect the residing system as well as to be efficient. These algorithms normally obtain information from the environment and motion sensors and accordingly control light levels. Some of them are time-based control, which sets the times of lighting according to certain patterns of use, and adaptive control, which responds by changing the lights according to information received (for example, how much light is available or whether people are moving about). Usually, a combination of design and fault diagnosis algorithms is employed where light emissions are monitored with sensors (usually LDRs) during maintenance. More sophisticated systems will incorporate machine learning algorithms that will predict errors and maintenance requirements through historical data or adjust the lighting based on traffic flow, forecasted weather, and seasons. Achebe's solar-powered lighting system is appropriate for use in campus settings and is cost-effective and environmentally friendly [10]. This reference made us notice that streetlight automation systems have several issues and limitations. Power management is

very important; usually, most of the systems use solar energy and batteries because the seasonal and climatic changes affect energy availability. A further problem affecting the reliability of such systems is the sensor degradation that occurs when sensors are exposed outside. In securing the network against hacking circumstances, system functions and user data are secured and protected. The initial hardware and infrastructure costs are very high, and that may inhibit the speedy adoption of these technologies. Other future aspects, such as artificial intelligence (AI) and machine learning (ML) applied as smart streetlighting, will be able to analyze traffic, forecast and predict maintenance support, and allocate energy pumps at the moment when needed. In addition to this, advanced energy storage systems in combination with renewable energy resources would be more efficient than the existing systems today. The streetlighting system is expected to become even more energy-efficient, sustainable, and adaptive to the needs of modern cities.

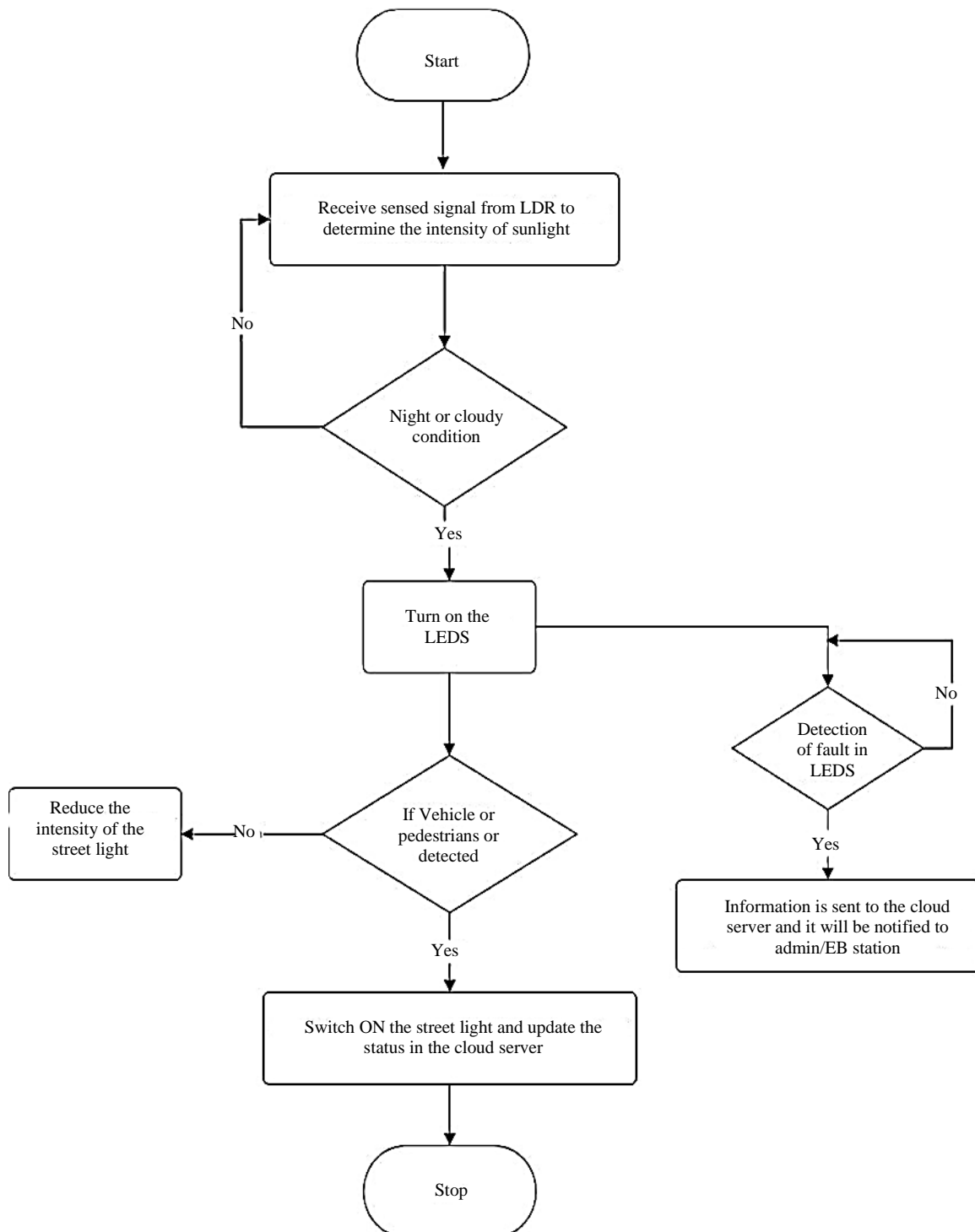
## METHODOLOGY

Urban planning, like any other industry, has challenges to solve, including the construction of energy-efficient buildings, increased safety, and environmentally friendly buildings. Lighting systems are a core element of the built environment as they enhance the safety and visibility for pedestrians, bicycles, and vehicles during the dark hours. However, the use of streetlighting systems mostly comes with a number of disadvantages, such as excessive energy costs due to the usage of old-fashioned technology incorporated with inefficient management of the streetlamps. These systems function on preset parameters, which often means that the lights are activated during times of little to no activity, resulting in loss of energy and profitability. Also, some systems cannot identify their issues and the vulnerabilities in the systems and result in unresponsiveness to the environmental conditions, for the prolonged downtime of the systems can create security threats. The aims and objectives of the Smart Streetlighting Project in this regard are to address all these issues by designing an adaptive, energy-efficient lighting system to mitigate safety hazards and enhance operational efficiency. Our system uses a strong modular structure, which enables the system to have good control that provides efficient and effective response. This automatic day/night sensor adjusts the lighting settings in the dark. The LDRs measure the brightness of the individual LEDs, enabling maintenance in the case where there is an error detection. The infrared motion sensors monitor the motion; if the motion is detected, then it sets LED brightness higher and changes the state to lower when there is no movement around the streetlamp, thus energy consumption is reduced and saved. Embedded into the control system is a feedback system that not only allows for real-time status updates but also monitors and detects maintenance needs through serial communication. This system compromises energy wastage and simultaneously monitors the health conditions of the streetlamp to make sure there is sufficient light in urban areas whenever required depending on the situation (Figure 1).



**Figure 1.** Block diagram the methodology.

By the deployment of automatic controls that contain effective sensors that manage the energy efficiency throughout the system, which makes the system cheaper and makes it easy to install in all kinds of urban areas. The Smart Streetlighting Project is in line with the goals of sustainable development, which include energy saving, decreasing greenhouse gas emissions, and reducing operational costs. Our system's main advantages are energy efficiency, improved safety, and decreased maintenance cost which make it an essential element in urban cities. It presents a modern solution for urban lighting systems (Figure 2).



**Figure 2.** Work Flow of the project.

## **BENEFITS**

This project is accomplished so that it benefits in addressing the major issues of the urban infrastructure and, in addition to this, contributes to the global objectives of sustainable development. This includes its feature of remarkable energy efficiency as a result of its state-of-the-art and self-adjusting lighting control systems. The project incorporates advanced infrared (IR) motion sensors and day and night sensors to make sure that the lights turn on only when they are needed. Our project uses the minimum amount of energy by increasing the brightness of the light while the motion of a pedestrian or vehicle is detected by the sensors. This type of operation results in maximum effectiveness while eliminating the inefficiencies of the typical systems that have rigid plans, which act as a great help in reducing the amount of energy that is wasted as well as cutting down the expenses incurred on electricity. Real-time fault detection as a result of the light-dependent resistors monitoring each LRD of the LED posts provides another crucial advantage by enabling reliable connections to be established. If there is dimming of the posts or they fail to ignite, the LDRs will detect it immediately, and the remaining fault LDR will identify it in real time. These types of links ensure that real-time preventive maintenance is performed, increasing the efficiency of most of the urban regions for the benefit of the citizens. Thanks to the feedback loop embedded in the automated system, operation status and repair signals are automatically sent, which cuts the labor costs and eliminates manual services. The safety of the social public is further improved by such appropriate use of artificial lights as restricting lighting to occasions where it is imperative, hence preventing accidents and malicious activities. The selective use of lights saves energy and makes people feel safe, whether walking, cycling, or driving. Moreover, the system is easily configurable and scalable, which allows its application in different urban environments such as residential places, commercial areas, and motorways. This system is more flexible and adaptable based on the different situations, and further enhancements can be applied as the area develops over time. Apart from the technical advantages it provides, the project increases environmental efficiency by minimizing the greenhouse gases associated with wasting energy. During the development of this project, we considered the environment of urban areas with busy movement over nighttime. Also, the project has proved economically flexible for the urban cities by providing automated indications for maintenance services and reducing power consumption. As a conclusion, the Smart Streetlighting Project is all-encompassing since it combines all the shortcomings of conventional streetlights while enhancing security, dynamic scaling, and sustainability. This is an example of how urban infrastructure can be enhanced with universally regarded technology and automation in order to deliver an effective, accessible, and eco-friendly source of light in compliance with the concept of evolved smart cities.

## **EVALUATION OF MODEL**

This project has been through a process of evolution by improving in its functions and by integrating new technologies. The progress of this model can be segmented into stages having technological advancements, increased efficiency and scalability in each.

### **Phase 1: The Automation of Lighting Schedules**

In the very first idea, we use timers for the automation process, which operates on the scheduled environment of a particular time period. As the time goes around, the morning after the sun rises, lamps go off as the operations are scheduled. However, while this method enabled the lights to be used without manually operating them, it also made these tools tough to be adjusted depending on the weather, meaning that this method could be in high demand but may not always be usable.

### **Phase 2: The Automation of the Sensor Used**

To overcome those timer-based static approaches, we came up with the use of alternative sensors to detect motion and ambient light to process day or nighttime. These sensors capture the external lights that indicate daytime, so they send a signal to the controller for the lights to be turned off. The surrounding light is enough for the environment. Besides this, the infrared sensor would turn on a sensor that would brighten nearby lights whenever movement was detected, marking the first step towards energy-efficient lighting that adjusts to life as it happens.

---

### **Phase 3: Adaptive Lighting**

In an extension of a sensor driven automation, movable lighting control was installed with the aim of ceiling further electricity usage. Each post had light-dependent resistors (LDRs) to determine how well the systems were working. There was a minimum light level that was always on when there was no movement and the brightness worked as an impairment of the lightning when triggered by motion, to make it easy to see the devices better during activity. In this phase, wastage of energy was minimized, safety measures were greatly improved, and the automation introduced by brightness monitoring helped in fault detection.

### **Phase 4: IoT Integration and Centralized Management**

This model, in the now fourth phase, was extended further to embrace the Internet of Things (IoT) integration. Streetlights were equipped with wireless communication protocols, which were linked to a centralized management platform for real-time control and surveillance. The system determines which components of light were not operating effectively or broken that relied on the LDR data, and they were indicated as notifications to the respective person so they could be maintained. Also, such integration permitted users to remotely change some settings on the lights, which enhanced their scaling and the business's effectiveness.

## **USE CASES**

### **Automated Lighting Control**

Using LDR sensors, lamps are always turned on at low intensity in order to make sure that the energy consumption is reduced at off-peak hours. LDR sensor is used to detect the movement of vehicle or pedestrian around the street lamp, if that is detected, it automatically glows the lamp to high intensity. This increases safety while also conserving energy.

### **Monitoring and Management Allocation**

The lighting of each unit is monitored regularly by the IoT and its functionality and utilization are also displayed. The information signal is transmitted to a control center which monitors several lighting units and the scheduling of their repairs.

### **Failure Identification and Predictive Maintenance**

The system observes the light output and the sensors to see any failures. If a lighting post works at a lower level, it can be reported for servicing helping to improve the reliability of service by improving its ability to work significantly.

### **Reduction of Expenditures**

By using less consumption of energy, it results in reduced costs. Eventually, savings from energy conservation and lowered maintenance from predictive analytics will be enough to recoup the initial expenditure on the installation.

### **Better Public Safety**

When motion is sensed, smart lighting can turn up the brightness, preventing crime and better illuminating pedestrians and drivers. This makes the area safer. In some other systems, the intensity of light can be provided based on the population density of the particular region, making the area safer without having too much lighting.

## **MODULE DESCRIPTION**

### **Day/Night Detection Module**

The implementation of the LDR sensors detects the external environment so the system can easily determine whether it is day or night time to operate the lamps on or off. It regulates other lights according to the surrounding light intensity in order to save unnecessary power consumption.

### **Motion Detection Module**

The IR sensors are responsible for monitoring the movement of vehicles or pedestrians. The amount of light is controlled based on the motion detection around the streetlight, which would otherwise be spent on idle areas.

### **Adaptive Lighting Control Module**

Uses the input from ambient light and motion detection modules to operate the brightness of LED lights. Uses some of the adaptive algorithms to adjust the lighting level to meet demand, thus reducing energy waste.

### **IoT and Communication Module**

Provides an uninterrupted connection between the centralized monitoring system and the wall lamps to relay real-time data. The remote monitoring, operating, and receiving the status of each lamp post dives into the communication protocols range (Wi-Fi or LoRa) for application.

### **Fault Detection and Maintenance Module**

The sensors evaluate the light emitting data continuously, if it detects any defect or irregularities with glowing, they instantly convey the information to central managing system to minimize the downtime and repair costs to an optimal level.

## **EXISTING SYSTEM**

Current streetlighting systems still follow outdated techniques, operating the lights continuously switched on for the entire night or set with a timer, but these designs show a lack of flexibility to real-time factors and are expensive to maintain. Availability of PDAs or a manual set of controls in some of the systems only allows lights to be turned on and off at certain points, but bearing in mind traffic, weather, and environmental factors, adjusting the light settings accordingly is rare to find. These features also complicate the process of having the system inspected and controlled from a distance. An abundance of human activity directly influences manual lighting systems, which contributes to the inconsistency and overconsumption of energy since the lights tend to switch on for longer than needed. Automated timer-controlled systems help in switching the lights off and on at preset periods, but this preset does not take into consideration weather conditions like cloudy days or changing activity levels. Similar to these systems, photoelectric sensors also have a commonsense approach to reaching off during dark conditions, but they fail to account for the movements of humans and cars, resulting in wastage of energy. While these systems are somewhat automated, users must be prepared to invest their resources in their installation and upkeep, as they are costly. However, the primary appeal here is the ability to remotely access and control streetlights. At the same time, free-standing, solar-powered streetlights are more reliable and do not solely rely on electricity from the grid, but they still do remain ineffective without motion sensors or the ability for adaptive brightness control. To summarize, systems that do exist are not capable of meeting the requirements for real-time fault detection or being able to adapt to ever-changing energy usage dynamics, activities, or environmental factors. Furthermore, they are usually not cost-effective to deploy in remote areas, especially when the infrastructure costs are high, although less than some of the alternatives. The need for a more intelligent, adaptive, and sustainable streetlighting system is evident given these limitations. These modern technologies can increase efficiency by promoting sustainability.

## **PROPOSED SYSTEM**

The system that has been proposed is a smart streetlight automation that employs the use of a variety of sensors and a microcontroller to automatically control the amount of light that is to be provided to a street. This system subserves the purpose of energy efficiency by employing the use of LDRs, which provide the necessary amount of light depending on the amount of ambient light available in the surroundings. During off-peak timings, lights tend to be dimmed, which helps in saving energy. Vehicles and pedestrians are detected through the use of infrared motion sensors, which tend to detect

any movement in the surroundings and further light up the area, making the surroundings safe even at night. With the help of IoT, real-time monitoring along with remote management can be carried out. Furthermore, it helps in checking the status and energy usage of each lighting unit. All of this information can be stored in a central system, therefore providing the user the ability to monitor the lights along with ensuring required maintenance can be performed. The system is engineered with automated fault detection and predictive maintenance features, which predict and flag lights that are not working as intended or are malfunctioning. Once maintenance has been flagged, it can be attended to swiftly, which in turn minimizes unparalleled interruptions and assures consistent functioning. The Day/Night Detection module, in conjunction with LDR sensors, prevents waste of energy by ensuring that lights are turned off during the day and turned on at night while also adapting to changes in ambient light. The Motion Detection Module uses IR sensors, which allow the system to activate or increase the intensity of lights where required rather than activating them everywhere, which uses up a lot of energy. The Adaptive Lighting Control Module decreases energy wastage by modifying the lighting intensity as per the feedback that has been acquired from the ambient light and motion detection modules. The IoT and Communication Module overcomes the previous challenges related to the centralized systems for monitoring by allowing real-time updates, remote control, and instant data transmission and alerting the system in case troubleshooting is required.

## **FUTURE ENHANCEMENT**

### **IoT Integration and Remote Monitoring**

By connecting the system to the Internet of Things (IoT), remote monitoring and control could be added to enhance management capabilities. Integrating modules like Wi-Fi (e.g., ESP8266) or GSM would allow authorities to monitor lighting conditions, receive real-time fault notifications, and even adjust settings remotely. This would enhance system reliability and reduce maintenance costs by enabling predictive maintenance and quicker response times for repairs.

### **Energy Source Optimization with Solar Panels**

Adding real solar panels and battery storage would allow each light post to be fully self-sustaining. The system could be programmed to monitor battery levels and adjust brightness to conserve energy when needed. This renewable energy approach could reduce the environmental footprint and operational costs significantly.

### **Advanced Motion Detection and AI-based Pattern Recognition**

The combination of cameras and AI-based motion detection is able to detect the type of activity. For example, AI could be able to differentiate the pedestrian and vehicular traffic and adjust the light levels accordingly. This would further improve safety and efficiency in both urban and rural settings.

### **Dynamic Light Dimming Based on Weather and Traffic Conditions**

By using weather sensors, the system can be able to adapt to low visibility conditions (e.g., fog or heavy rain) by increasing light intensity, while traffic sensors could help adjust lighting based on real-time traffic data. This would ensure safety while avoiding unnecessary energy use.

### **User-Centric Smart Lighting via Mobile Apps**

By developing a user-friendly mobile application would allow every citizens to report faults or request adjustments, such as increased the enhanced managements system of lighting in specific areas for events. This would engage the community directly in managing the lighting system and increase responsiveness to public needs. By implementing these enhancements, the streetlight automation system could become a robust, adaptive solution tailored to modern urban needs, enhancing public safety, reducing energy consumption, and supporting sustainable city growth.

## **CONCLUSION**

To summarize, the Smart Streetlighting Project represents a groundbreaking modern solution when it comes to lighting in urban and rural areas, as it combines the use of sensors, automated light

controllers, and monitoring systems. This approach not only increases public safety by improving visibility but also ensures considerable energy savings since the system automatically controls the brightness of lights depending on the environmental conditions and movement observations. With the integration of failure detection systems, the required maintenance is performed, thus ensuring interferences and economic waste are minimized. In addition, there are possibilities for further enhancement in the form of integrating green technologies such as solar panels into the system, which will not only make it cost-effective but will also help expand the global energy-saving campaign as well as lower carbon emissions. The system has a high potential for development, is easy to integrate into existing standards, and is cost-efficient, which allows it to overcome the shortcomings of existing streetlighting systems and serves as a basis for the further development of better infrastructure systems targeting smart and sustainable cities.

### **Acknowledgement**

We would like to express our deepest gratitude to our project guide, Dr. Sangeetha S., Professor/CSE, whose guidance, valuable insights, and constant support were instrumental in the successful completion of this project. We extend our sincere thanks to Karpagam College of Engineering, Coimbatore, for providing the necessary resources and infrastructure for conducting the research. Special thanks to our peers for their invaluable feedback and collaboration throughout the course of this work.

### **REFERENCES**

1. Swami J, Patel H, Patel K, Bhalse MN. IoT Based Street Light Automation System. *Int J Trend Res Dev*. 2019 Apr; 6(2): 232–234.
2. Bhosale S, Gaware K, Phalke P, Wadekar D, Ahire P. IoT based dynamic control of street lights for smart city. *Int Res J Eng Technol*. 2017 May; 4(5): 1181–3.
3. Satyaseel H, Sahu G, Agarwal M, Priya J. Light intensity monitoring & automation of street light control by Iot. *Int J Innov Adv Comput Sci*. 2017 Oct; 6(10): 34–40.
4. Dheena PF, Raj GS, Dutt G, Jinny SV. IOT based smart street light management system. In 2017 IEEE international conference on circuits and systems (ICCS). 2017 Dec 20; 368–371.
5. Nefedov E, Maksimainen M, Sierla S, Flikkema P, Yang CW, Kosonen I, Luttinen T. Energy efficient traffic-based street lighting automation. In 2014 IEEE 23rd International Symposium on Industrial Electronics (ISIE). 2014 Jun 1; 1718–1723.
6. Shasim AA, Davanpelli S, Karande R, Bidkar K, Pardeshi T. Automatic Street Light. *Multidisciplinary Research*. 2025: 51.
7. Holenderski M, Verhoeven R, Ozcelebi T, Lukkien JJ. Light pole localization in a smart city. In Proceedings of the 2014 IEEE Emerging Technology and Factory Automation (ETFA). 2014 Sep 16; 1–4.
8. Abinaya B, Gurupriya S, Pooja M. Iot based smart and adaptive lighting in street lights. In 2017 IEEE 2nd International Conference on Computing and Communications Technologies (ICCCT). 2017 Feb 23; 195–198.
9. Bhoir A, Penkar A, Mhatre M, Dalvi V. Solar based auto intensity control street light using arduino. *Int Res J Eng Technol*. 2018 Oct; 5(10): 1542–5.
10. Achebe Patience Nkiruka. Design and implementation of solar light for campus environment. *Res J Engineering Sci*. 2018 Dec 26; 7(11): 13–19.
11. Saifuzzaman M, Moon NN, Nur FN. IoT based street lighting and traffic management system. In 2017 IEEE region 10 humanitarian technology conference (R10-HTC). 2017 Dec 21; 121–124.
12. Leccese F. Remote-control system of high efficiency and intelligent street lighting using a ZigBee network of devices and sensors. *IEEE Trans Power Deliv*. 2012 Dec 20; 28(1): 21–8.
13. Sri T, Varma R, Krishna VH, Chowdary KV. Automated street lighting system. *Int J Innov Technol Explor Eng*. 2019 May; 8(7): 2920–2924.