

# Collaborative Approaches in Using Satellite Data for Climate Action: A study

Heena Tajoddin Shaikh<sup>1\*</sup>, Kazi Kutubuddin Sayyad Liyakat<sup>2</sup>

## Abstract

*As climate change continues to threaten coastal towns in many ways, satellite sensing has become an increasingly important tool for assessing and managing risk. This technology could help ecological scientists, legislators, and urban planners make better decisions, which could lead to safer and greater resilient coastal communities in the end. The use of satellite data in urban development and emergency preparedness programs has helped a lot in reducing the consequences of severe weather, environmental damage, and rising sea levels. This has been done with data from satellites. You don't have a choice about whether or not to be adaptable and resilient; you have to be both. Satellite sensing can help you do both of these things well. Satellite sensors have changed the way we keep an eye on sea levels. This technology provides us important information that helps us understand how global warming affects rising seas around the world. As technology keeps getting better, satellite observations grow more and more crucial for helping vulnerable people throughout the world and planning for climate resilience. The combination of better sensor technology, cooperation, and faster access to data is helping to start a new age in monitoring the environment. All of these things are needed for our globe to stay alive in the future.*

**Keywords:** Coastal areas, climate change, environmental study, satellite sensing, sea level

## INTRODUCTION

As the consequences of climate change get worse, scientists and policymakers are both quite worried about keeping an eye on the rise in sea level. Rising sea levels are a menace to coastal towns, ecosystems, and economies all across the world, and they could even destroy them. Even though traditional ground-based measurement methods can be useful, they might not be able to measure a wide range of things or be easy to get to. Satellite sensing, on the other hand, is a way to keep an eye on changes in sea level all around the world that is not only wide-ranging but also quick and precise. This article talks about how important satellite-based sea level monitoring is and how it affects our understanding of climate change and future policy plans. The technology that makes this surveillance possible is also spoken about.

### \*Author for Correspondence

Heena Tajoddin Shaikh  
E-mail: [rajasahab.3617@gmail.com](mailto:rajasahab.3617@gmail.com)

<sup>1</sup>Asst. Professor, Department of Electronics and Telecommunication Engineering, Brahmdevdada, Mane Institute of Technology, Solapur, Maharashtra, India

<sup>2</sup>Professor and Head, Department of Electronics and Telecommunication Engineering, Brahmdevdada, Mane Institute of Technology, Solapur, Maharashtra, India

Received Date: October 14, 2025

Accepted Date: November 07, 2025

Published Date: November 13, 2025

**Citation:** Heena Tajoddin Shaikh, Kazi Kutubuddin Sayyad Liyakat. Collaborative Approaches in Using Satellite Data for Climate Action: A study. International Journal of Atmosphere. 2025; 2(2): 1–9p.

Radar altimetry is a typical method used in satellite sensing to keep an eye on sea level. This method figures out how long it takes for a RADAR signal to go from the satellite to the sea surface and back. By figuring out this period, scientists can estimate the height of the ocean surface with great accuracy, which lets them cover the whole world all the time [1–7].

Recent improvements in satellite technology have led to the launch of many missions that are expressly geared to detect sea level. NASA's Jason series, the European Space Agency's (ESA) Sentinel-6, and the ESA's GRACE (Gravity

Recovery and Climate Experiment) missions are all part of these programs. These satellites not only keep an eye on changes in sea level, but they also gather information on changes in ocean temperature, salinity, and the movement of ice sheets. Because of this, they give us a full picture of the marine ecosystems that exist on Earth. Figure 1 shows how important it is to keep an eye on sea level.

1. *Learning About Climate Change:* By keeping an eye on sea level, scientists can figure out what climate change will mean for the future and how it will affect different areas.
2. *Finding out how risky it is for towns:* Cities and towns that are on the shore are more likely to be affected by increasing sea levels. Satellite data helps authorities plan for and deal with possible threats by giving them accurate forecasts of changes that are happening. This includes looking at the infrastructure, getting ready for disasters, and coming up with plans for long-term adaptation.
3. *Keeping ecosystems safe:* Mangroves, marshes, and coral reefs are all examples of coastal ecosystems that are important for protecting biodiversity and acting as barriers against storm surges. Keeping an eye on sea level helps safeguard and manage these important ecosystems, making sure they can survive changes in the environment.
4. *Help with putting policies into action* People who make policy need to have access to reliable satellite data. It helps people make smart choices regarding environmental rules, building on the coast, and ways to adapt to climate change. This, in turn, encourages sustainable habits that are good for both people and the planet.

Satellite sensing is the best way to keep an eye on sea level, although it does have some problems. Ocean currents, weather conditions, and changes in the land (such land subsidence) are just a few of the things that might affect how accurate data is. Scientists are working on algorithms that take into account the things described above in order to make the data more accurate overall.

Also, combining satellite data with ground-based observations is still an important part of the validation and calibration processes. International space organizations, universities, and government agencies must cooperate together to provide a complete monitoring framework [8–15].

As we move to the future, technical developments like the use of next-generation satellites with better sensors and imaging capabilities promise to make sea level monitoring even more accurate. Enhanced machine learning algorithms and data analytics can further optimize data interpretation, enabling real-time assessments of sea level fluctuations. Figure 1 shows a study of the water level.

Satellite sensing is changing the way we keep an eye on the rise in sea level, which is giving us important information about how climate change is affecting the world. As we continue to work on and improve this technology, we are learning more about the problems that lie ahead and the steps we need



**Figure 1.** Sea Level monitoring Importance.

to take to protect our coastal communities and ecosystems. Satellite data is at the front lines of the fight against climate change. It gives us hope and advice as we deal with the unknown future. It is evident that action needs to be taken right now, and satellite data is leading the way in this fight.

### **SATELLITE SENSING FOR CITIES ON THE COAST**

As coastal communities grow, they face several problems, such as climate change, rising sea levels, urbanization, and environmental degradation. In order to effectively manage resources and make sure that urban areas stay viable in the long run, these problems need to be solved in new ways. New satellite sensing technology is one of the most promising new ideas for fighting these problems. Coastal communities can get important information for urban planning, environmental monitoring, disaster management, and climate resilience by using the capabilities of remote sensing satellites, as shown in Figure 2.

Satellite sensing is the use of satellite-based technology to gather information about the Earth's surface. Some of the types of sensors used in satellite sensing are optical, infrared, and radar sensors. These sensors can take pictures and gather data in a wide range of spectral ranges, which helps us learn more about how land is used, how much greenery there is, how clean the water is, and how well the city works. Decision-makers, urban planners, and scientists managing coastal towns would greatly benefit from the data gathered through satellite sensing [16].

In coastal urban areas, the following are some key applications of satellite sensing:

1. *Keeping an eye on urbanization and land use:* The utilization of land in coastal cities frequently undergoes fast transformations. Through the use of satellite photography, urban sprawl may be tracked, informal settlements can be identified, and changes in land cover can be monitored. The collection of this data is essential for the development of efficient urban planning strategies that strike a balance between expansion and environmental sustainability.
2. *Evaluating the State of the Environment* Coastal regions are delicate ecosystems that are frequently impacted by pollution, the destruction of habitat, and changes in climate. The quality of the water can be monitored using satellite sensors, which can also identify algae blooms and evaluate coastal erosion. The management of natural resources and the preservation of biodiversity are both aided by this information [17].



**Figure 2.** Sea Level study.

3. Coastal communities are susceptible to natural catastrophes such as hurricanes, floods, and tsunamis, and it is imperative that they have disaster management and response plans in place. Real-time data can be obtained using satellite sensing, which can improve both catastrophe preparedness and response techniques. Accurate damage assessment is made possible by high-resolution photography, which also helps to hasten recovery activities and provides information for evacuation plans.
4. *Climate Change Adaptation*: Cities are able to study and predict the effects of climate change on coastal areas now that they have access to long-term climate data derived from satellite observations. The knowledge presented here is essential for the development of adaptive solutions, such as the construction of infrastructure that is capable of withstanding storm surges and rising sea levels.
5. *Infrastructure Monitoring*: Coastal communities frequently have essential infrastructure, such as roads, bridges, and services, that is under danger as a result of the changing environmental circumstances. Through the use of satellite-based monitoring, it is possible to gain insights into the structural integrity of these facilities and identify early indicators of deterioration.

A multitude of advantages can be gained through the utilization of satellite sensing in coastal cities:

- It is often more cost-effective to collect data through satellite imaging than it is to collect data using traditional ground-based methods, particularly when the data collection is being done across wide areas.
- *Timeliness and Frequency*: Satellites have the ability to collect data often and in a manner that is very close to real time. This enables them to provide information that is up to current, which is essential for continuous urban management initiatives [18].
- *Comprehensive Coverage*: Satellite sensors have the ability to cover broad geographic areas, which enables them to support integrated coastal zone management and permit the implementation of regional evaluations.
- *Improved Decision-Making Capabilities*: The capacity to visualize and analyze geographical data enables municipal planners and politicians to make informed decisions that are founded on empirical evidence.

The use of satellites for sensing has a number of substantial benefits; nonetheless, it is not without its difficulties. Understanding how to interpret data can be difficult, and it is necessary to have knowledge of remote sensing and geographical information systems (GIS). Furthermore, the integration of satellite data with local datasets can be difficult, particularly when matching disparate temporal and spatial resolutions. This is especially true when the data are different from one another. In addition, there is the problem of data privacy and security, which is especially relevant when it comes to urban monitoring.

With the further development of technology, it is anticipated that the potential applications of satellite sensing in coastal communities would continue to expand. The combination of artificial intelligence (AI) and machine learning (ML) with satellite data has the potential to improve predictive modeling and automate monitoring procedures. When it comes to the development of comprehensive frameworks that make efficient use of satellite sensing, it will be vital for governmental agencies, academic institutions, and private sector partners to cooperate together [6, 9].

In conclusion, satellite sensing is at the forefront of novel solutions for the management of the complex difficulties that coastal towns are confronted with. It is possible for urban planners and policymakers to develop resilience, improve sustainability, and safeguard the delicate balance of coastal ecosystems by utilizing this technology. This will ensure that these lively metropolitan regions continue to thrive for years to come. As we look to the future, it is possible that the adoption of satellite sensing will be the key to unlocking a route forward for coastal urban growth that is both sustainable and successful.

## **TECHNOLOGIES FOR SATELLITE SENSING**

Satellite sensing techniques have transformed our ability to observe sea levels with unparalleled precision and spatial extent. The following technologies have greatly helped us understand how sea levels change:

### **Altimetry:**

The most widely used technique for determining sea surface height is satellite altimetry. Radar altimeter-equipped satellites deliver signals to the ocean's surface and track how long it takes for the signals to arrive. Scientists may determine variations in the height of the sea surface with astonishing precision by measuring the distance traveled.

The TOPEX/Poseidon project, which was launched in 1992 and produced vital early data concerning global sea level rise, is an example of a mission that uses radar altimetry.

- Jason-1, Jason-2, and Jason-3: Follow-on missions that have maintained their monitoring efforts and made continuous contributions to our knowledge of climate fluctuations and ocean circulation.
- Sentinel-6 Michael Freilich: This mission was launched in 2020 with the goal of expanding the time period for sea level measurements and providing high-resolution sea level data.

### **Measurements of Gravity**

Gravity Recovery and Climate Experiment (GRACE) and GRACE-FO are two examples of satellite gravity missions that provide special insights into mass changes in the Earth's system. Earth's gravity field is impacted by changes in distribution of water, both on surface and in the ocean. By keeping an eye on these fluctuations, scientists can draw conclusions about water storage variations and ice melt in polar regions, both of which are critical to comprehending sea level rise.

### **Sensing remotely**

The effects of sea level rise on metropolitan areas and coastal habitats are being studied more and more through the use of remote sensing technologies, such as optical and microwave sensors. These sensors offer vital information for tracking changes in land use, charting coastal erosion, and evaluating the effects of rising sea levels on infrastructure.

### **Combined Models**

Our knowledge of sea level rise is improved by developments in mathematical models that use satellite observations along with other data sources. Researchers can more accurately forecast future sea level increases and evaluate the possible effects on coastal systems by integrating satellite data into real-world measurements and climate models.

Sea level monitoring using satellite sensing is still developing, and there are a number of intriguing new projects in the works:

1. Next-Generation Satellites: Future projects like NASA's Surface Water and Ocean Topography (SWOT) and the European Space Agency's Copernicus program offer improved capability for high-resolution sea level measurements.
2. Enhanced Cooperation: International cooperation between governments, space agencies, and academic institutions will promote data exchange and boost sea level monitoring initiatives.

3. **Improved Data Accessibility:** Utilization of satellite-sourced sea level data for public awareness, scientific study, and policymaking will be made easier by open-access data rules.
4. **Involvement with Local Communities:** More effective adaptation solutions catered to particular coastal contexts will result from the integration of satellite data with local expertise and community involvement [19, 20].

### **SATELLITE SENSING WITHIN RISK ASSESSMENT FOR COASTAL CITIES**

Cities on the coast are often the first to feel the effects of climate change because they face threats including increasing sea levels, stronger storms, and erosion. As cities get bigger and the infrastructure gets more stressed because of environmental limits, the need for good risk assessment and management is higher than ever. It is becoming more and more clear that satellite sensing technology, which can give real-time data on a wide range of environmental factors, is becoming an important tool for assessing risk in cities that are especially at danger.

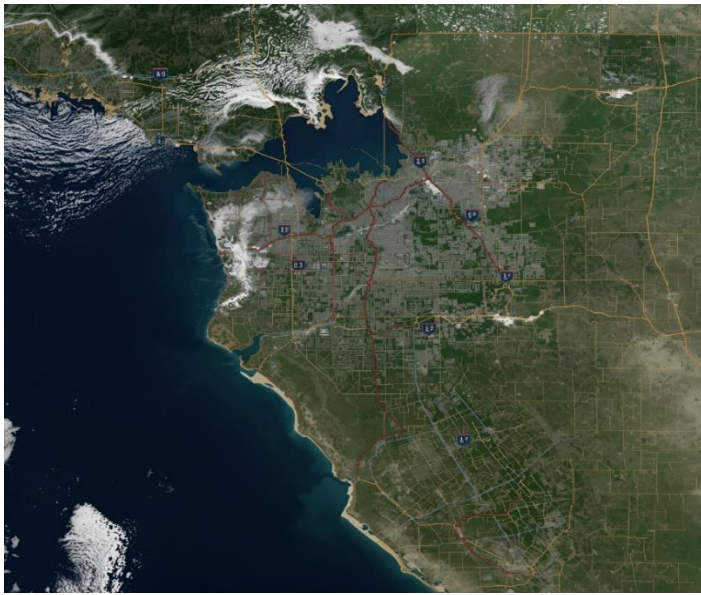
Satellite sensing is the technique of using sensors on satellites to obtain information about the Earth's surface and atmosphere. These sensors can pick up a wide range of electromagnetic radiation, from visible light to infrared. This lets them keep an eye on many different things, like how land is used, how plants are covered, changes in temperature, and the quality of water. You can look at the information that was collected to find out how the ecosystem is doing, see patterns, and guess what might happen in the future [7]. Figure 3 shows the satellite sensing with in risk assessment for coastal cities.

Coastal cities, which are frequently distinguished by the economic activity and cultural value they possess, are particularly vulnerable to a wide range of threats, including the following:

1. *Increases in Sea Levels:* The melting of ice caps and the expansion of seawater are both consequences of global warming, which is causing sea levels to rise. Coastal cities are required to conduct ongoing assessments to determine which areas are susceptible to erosion and flooding.
2. Storm Surges Hurricanes and tropical storms have the potential to produce storm surges that are deadly, which can overrun infrastructure and result in huge economic losses.
3. *Erosion:* Because coastal erosion poses a threat to critically important habitats and infrastructure, it is necessary to conduct continuous monitoring in order to inform mitigating efforts.
4. Towns frequently suffer greater temperatures than the surrounding areas as a result of human activities and infrastructure. This phenomenon is referred to as urban heat islands. As a result of this occurrence, heatwaves become more severe and pose a threat to public health.
5. *Deterioration of Water Quality:* Coastal urban areas are confronted with issues that are associated with pollution and runoff, which have an effect on marine habitats and human health.

### **ROLE OF SATELLITE SENSING IN RISK ASSESSMENT**

Satellite sensing plays vital role in addressing these risks by providing a comprehensive and holistic view of coastal environments. Figure 4 shows the risk assessment using satellite imaging.



**Figure 3.** Risk assessment using satellite imaging.  
Here are some ways satellite technology enhances risk assessment:

### **Monitoring in Real Time**

Satellite sensors can track changes in land and marine characteristics in real time since they can collect data continuously. In order for municipal planners and emergency personnel to take swift action, it is essential to watch storm systems, flood extent, and changes in water quality [21].

### **Making Decisions Based on Data**

Using this data, planners can identify areas of high susceptibility and set priorities for infrastructure expenditures, like seawalls or green areas that reduce heat and flooding.

### **Charting Vulnerabilities**

Sophisticated satellite imaging methods, such as Synthetic Aperture Radar (SAR), can map coastal regions to pinpoint places at risk. Cities may create customized evacuation plans as well as resource allocation methods with the use of this information, which is crucial for disaster preparedness.

### **CONCLUSION**

Satellite sensing is one of the most significant tools for assessing and managing risk. This is becoming more critical as coastal towns deal with the many threats that climate change brings. By using this technology, urban planners, policymakers, and environmental scientists may make better decisions that will make coastal communities safer and stronger in the long run. Using satellite data in city planning and disaster preparedness is a big step forward in the fight against rising sea levels, dangerous weather events, and the loss of biodiversity. Adaptation and resilience are not just options; they are necessary. Satellite sensing gives us the tools we need to put these ideas into action. Satellite sensing has changed the way we keep an eye on sea levels. It has become an essential source of information that helps us learn more about climate change and how it affects sea levels throughout the world. As technology

continues to move forward at a faster pace, satellite observations will become more and more vital for helping people who are vulnerable around the world and for supporting climate resilience measures. Environmental monitoring is moving into a new era, which is important for the future of our world. The combination of new sensing modalities, working together, and easier access to data is helping to bring about this new era.

## REFERENCES

1. Wale Anjali D., Rokade Dipali, et al, "Smart Agriculture System using IoT", International Journal of Innovative Research In Technology, 2019, Vol 5, Issue 10, pp.493–497.
2. Kazi K. S., "Significance And Usage Of Face Recognition System", Scholarly Journal For Humanity Science and English Language, 2017, Vol 4, Issue 20, pp. 4764–4772.
3. Pankaj R Hotkar, Vishal Kulkarni, et al, "Implementation of Low Power and area efficient carry select Adder", International Journal of Research in Engineering, Science and Management, 2019, Vol 2, Issue 4, pp. 183, 184.
4. Kazi K S, "Detection of Malicious Nodes in IoT Networks based on Throughput and ML", Journal of Electrical and Power System Engineering, 2023, Volume-9, Issue 1, pp. 22–29.
5. Karale Nikita, Jadhav Supriya, et al, "Design of Vehicle system using CAN Protocol", International Journal of Research in Applied science and Engineering Technology, 2020, Vol 8, issue V, pp. 1978–1983, <http://doi.org/10.22214/ijraset.2020.5321>.
6. Sayyad Liyakat. Fake Cryptocurrency Detection Using Python. Recent Trends in Programming languages. 2025; 12(01):1–7. Available from: <https://journals.stmjournals.com/rtpl/article=2025/view=201421>
7. Kutubuddin, KSK Approach in LOVE Health: AI-Driven- IoT(AIIoT) based Decision Making System in LOVE Health for Loved One, GRENZE International Journal of Engineering and Technology, 2025, 11(1), pp. 4628–4635. Grenze ID: 01.GIJET.11.1.371\_1
8. G M Kosgiker. Satellite Sensing for Sea Level Monitoring: A Transformative Approach to Understanding Climate Change. Journal of Microwave Engineering & Technologies. 2025; 12(1): 33–41p.
9. Kazi Kutubuddin Sayyad Liyakat. Transforming IoT Connectivity Through VLSI Technology. International Journal of VLSI Circuit Design & Technology. 2024; 02(02):1–11. Available from: <https://journals.stmjournals.com/ijvcdt/article=2024/view=190803>
10. Kazi Kutubuddin Sayyad Liyakat, "Internet of Robotics Things in Industrial Applications: A Study," Journal of Control and Instrumentation Engineering, vol. 11, no. 1, pp. 1–10, Feb 2025.
11. Kazi Kutubuddin Sayyad Liyakat. Fake Cryptocurrency Detection using Python. Recent Trends in Programming Languages. 2025; 12(1): 1–7p.
12. Kazi Kutubuddin Sayyad Liyakat. The Future is Smelling: Exploring the Potential of e-Nose. Journal of Semiconductor Devices and Circuits. 2025; 12(1): 16–27p.
13. Sultanabanu Sayyad Liyakat. (2025). Quantum Key Distribution in Optical Fiber Communication: A Study. Trends in Opto-electro & Optical Communication. 2025; 15(1): 30–40p.
14. Sayyad Liyakat, Nanotechnology in Space Study. International Journal of Applied Nanotechnology. 2024; 10(02): 39–46p. Available from:<https://journalspub.com/publication/ijan-v10i02-11616/>
15. Dr. Kazi Kutubuddin Sayyad Liyakat. (2024). KSK Approach to Smart Agriculture: Utilizing AI-Driven Internet of Things (AI IoT). Journal of Microcontroller Engineering and Applications. 2024; 11(03):21–32.
16. Kazi Kutubuddin Sayyad Liyakat. (2024). Microwave Communication in the Internet of Things: A Study. Journal of RF and Microwave Communication Technologies, 38–49. Retrieved from <https://matjournals.net/engineering/index.php/JoRFMCT/article/view/1276>
17. Kazi Kutubuddin Sayyad Liyakat, (2023). Nanorobotics: A Review, International Journal of Applied Nanotechnology (IJAN), 9(2), pp. 36 – 43. DOI: <https://doi.org/10.37628/ijan.v9i2.1019>
18. Dr. Kazi Kutubuddin Sayyad Liyakat. Sensor and IoT centered Smart Agriculture by NodeMCU. Recent Trends in Sensor Research & Technology. 2024; 11(03):24–32. Available from:

<https://journals.stmjournals.com/rtsrt/article=2024/view=179744>

19. Nikat Rajak Mulla, Kazi Kutubuddin Sayyad Liyakat. Air Flow Analysis in Sensor-Based Aircraft Wings Design. *Recent Trends in Fluid Mechanics*. 2025; 12(2): 29–39p.
20. Nikat Rajak Mulla, Kazi Kutubuddin Sayyad Liyakat. IoT Sensors To Monitor Pipeline Pressure and Flow Rate Combined with MI-Algorithms to Detect Leakages. *Recent Trends in Fluid Mechanics*. 2025; 12(2): 40–48p.
21. Heena Rafiq Shaik, Kazi Kutubuddin Sayyad Liyakat. Juncture of Nanotechnology and IoT: Novel Era of Connectivity. *Nano Trends – A Journal of Nano Technology & Its Applications*. 2025; 27(03):- . Available from: <https://journals.stmjournals.com/nts/article=2025/view=212921>