

## Robotic Assistance Using ESP32 Microcontroller

Akash Katte<sup>1</sup>, Vaibhav Hinchageri<sup>1</sup>, Pranay Kadam<sup>1</sup>, Anjali Pise<sup>2,\*</sup>

### Abstract

*The Robotic Assistance System using ESP32 Microcontroller is a voice-interactive and manually operable robotic model designed to improve human convenience and engagement in daily life. This project integrates modern technologies such as Alexa-based voice commands for intelligent interaction and Bluetooth-based manual control for user flexibility. By combining artificial intelligence with embedded systems, the robotic assistant is capable of performing a wide range of activities. These include entertainment-related functions like playing music, delivering real-time weather updates, and responding to general knowledge queries. In addition, the robot can support basic automation tasks such as controlling home appliances, setting reminders, and even assisting in fetching or moving small objects within its range. The central processing unit of the system is built around an ESP32 microcontroller, with alternatives like Arduino or Raspberry Pi for extended adaptability. Supporting hardware includes servo motors for movement, Bluetooth modules (HC-05/HC-06) for wireless communication, speakers for audio output, and sensors for obstacle detection. This integration demonstrates how AI-driven voice assistance combined with manual Bluetooth control creates a multifunctional, user-friendly robotic system, bridging the gap between smart home automation and personalized robotics.*

**Keywords:** Robotic assistant, voice controlled robot, Alexa integration, Bluetooth controlled robot, home automation, AI-based voice control, speech-based robot commands

### INTRODUCTION

In today's fast-paced world, automation and smart technology play a crucial role in simplifying daily tasks, enhancing entertainment, and improving human-machine interactions. The integration of these technologies into our daily lives has transformed the way we approach mundane activities, allowing us to focus on more important aspects of our lives. From smart home devices that manage our energy consumption to advanced algorithms that personalize our entertainment experiences, the impact of automation is profound and far-reaching.

The Robotic Assistant project is designed to bridge the gap between voice-controlled AI assistants and physically interactive robotics, creating a versatile system that responds to both Alexa voice commands and Bluetooth-based manual control. This innovative project aims to enhance user experience by providing a seamless interaction between users and technology. Imagine a household where you can command your robotic assistant to perform tasks such as cleaning, cooking, or even providing companionship, all through simple voice commands or manual inputs [1–4].

The Robotic Assistant is equipped with advanced sensors and machine learning capabilities, allowing it to adapt to the unique preferences and routines of its users. For instance, it can learn the layout of your home, recognize family members, and even

#### \*Author for Correspondence

Anjali Pise  
E-mail: [anjali.pise@sknscoe.ac.in](mailto:anjali.pise@sknscoe.ac.in)

<sup>1</sup>UG Students Electronics & Telecommunication Engineering, SKN Sinhgad College of Engineering, Korti, Pandharpur, Maharashtra, India

<sup>2</sup>Assistant Professor, Electronics & Telecommunication Engineering, SKN Sinhgad College of Engineering, Korti, Pandharpur, Maharashtra, India

Received Date: May 20, 2025  
Accepted Date: July 09, 2025  
Published Date: September 19, 2025

**Citation:** Akash Katte, Vaibhav Hinchageri, Pranay Kadam, Anjali Pise. Robotic Assistance Using ESP32 Microcontroller. Journal of Advancements in Robotics. 2025; 12(3): 23–34p.

---

anticipate your needs based on your daily habits. This level of personalization not only makes the assistant more efficient but also creates a more engaging and interactive experience [5–9].

Furthermore, the project emphasizes safety and reliability. With the integration of smart technology, the Robotic Assistant is designed to operate safely within a home environment, avoiding obstacles and ensuring that it does not interfere with daily activities. The use of voice commands allows for hands-free operation, making it accessible for individuals with mobility challenges or those who prefer a more convenient approach to managing their tasks [10–13].

## LITERATURE SURVEY

In recent years, developments in artificial intelligence and robotics have transformed the way humans interact with machines. One of the most notable advancements has been the rise of voice-controlled digital assistants such as smart speakers, which allow users to issue commands in natural language. These systems have made interaction more intuitive and convenient, but most of them remain purely virtual and lack direct robotic capabilities. This creates a gap between software-based assistants and physical robots, limiting the scope of automation in everyday life [14–19].

On the other hand, Bluetooth-controlled robots that use modules such as HC-05 or HC-06 provide an alternative by enabling wireless manual operation. While these systems allow basic control, they typically require constant human supervision and input. Without the integration of artificial intelligence, their applications are restricted, especially in contexts where autonomous decision-making and adaptability are expected [20–25].

Some hybrid systems that combine both voice and Bluetooth control have been introduced, mainly in industrial applications. However, for personal and domestic use, such systems are still not widely adopted. If refined, these hybrid approaches have the potential to revolutionize home automation by blending convenience with flexibility, offering greater control to users while reducing manual effort [26–31].

Assistive robotics also represents a promising area, particularly in healthcare and smart home environments. Robots designed to aid elderly individuals or people with disabilities can enhance independence and improve quality of life. Global organizations have emphasized the growing demand for such inclusive technologies, signaling a shift toward more human-centered designs in robotics [32–39].

Despite these advancements, several challenges remain. Current limitations include noticeable delays in voice recognition and processing, which can disrupt smooth interaction. Energy efficiency is another concern, as robotic systems often face issues with high power consumption that reduce usability for continuous operation. Additionally, wireless communication through Bluetooth carries potential security risks, which must be addressed to ensure user safety and system reliability. Overcoming these challenges will be essential for developing robust, efficient, and user-friendly robotic solutions [40–48].

## PROPOSED METHODOLOGY

To solve the above issue, the Robotic Assistant project suggests a hybrid control robotic system that can perform both voice interaction with Alexa Voice Services (AVS) and manual control through Bluetooth connectivity. With the combination of AI voice processing and embedded hardware, the robot is able to perform various tasks such as answering questions, appliance control, and movement based on commands [49–58].

The solution is achieved by the integration of

- A microcontroller platform for controlling operations.
- Bluetooth module for wireless hand control.
- Voice assistant hands-free command input support.

- Actuators and sensors to provide mobility and perception to the robot.
- This two-mode interaction ensures that the users are able to interact naturally (by voice) or precisely (by app), thus making it suitable for home, learning, and assistive scenarios.

## Real Implementation

### *Microcontroller Configuration*

Utilized Arduino Uno/ESP32 for motor, sensor, and communication module interfacing.

### *Voice Assistant Integration*

Using integrated Alexa Voice Services with an AVS-enabled device or speaker to execute and forward commands to the robot through cloud and/or hardware bridge.

### *Bluetooth Manual Control*

Used HC-05 Bluetooth module to receive movement commands from a smartphone app (e.g., Arduino Bluetooth Controller).

### *Actuation and Motion*

Servo motors and DC motors were interfaced to provide robot movements (left, right, forward, backward). Motor driver module (L298N) was utilized to drive power for motors.

### *Audio Output*

A tiny speaker or buzzer was utilized for playing voice output or sound alert from Alexa or notifications.

### *Power Supply*

Powered by rechargeable Li-ion battery pack with controlled 5 V/12 V outputs for controller and motor requirements.

## SELECTION OF COMPONENTS

Essential components were chosen for control, communication, mobility, and power to ensure efficient, reliable, and user-friendly robotic operation (Table 1).

## BLOCK DIAGRAM

The block diagram illustrates overall system architecture, showing communication between modules, control signals, and motor operation for movement (Figures 1 and 2).

**Table 1.** List of components with their specifications and reasons for selection.

Component	Specification / Reason for Selection
Microcontroller	ESP32/Arduino Uno: For control logic, I/O support, and compatibility with AVS and Bluetooth
Bluetooth Module	HC-05: Easy to interface with Arduino and compatible with smartphone apps
Voice Assistant	Amazon Alexa/Echo Dot: For natural language processing and cloud AI
Motor Driver	L298N: To control direction and speed of DC motors efficiently
DC Motors/ Servo Motors	For movement control and robotic arm (if any)
Ultrasonic Sensor	HC-SR04: For distance measurement and obstacle avoidance
Battery Pack	12 V Li-ion: Portable and rechargeable power source
Smartphone App	Bluetooth Controller App: To send directional commands
Speakers	Audio feedback for voice or responses
Chassis/Wheels	For stable movement and mounting of components

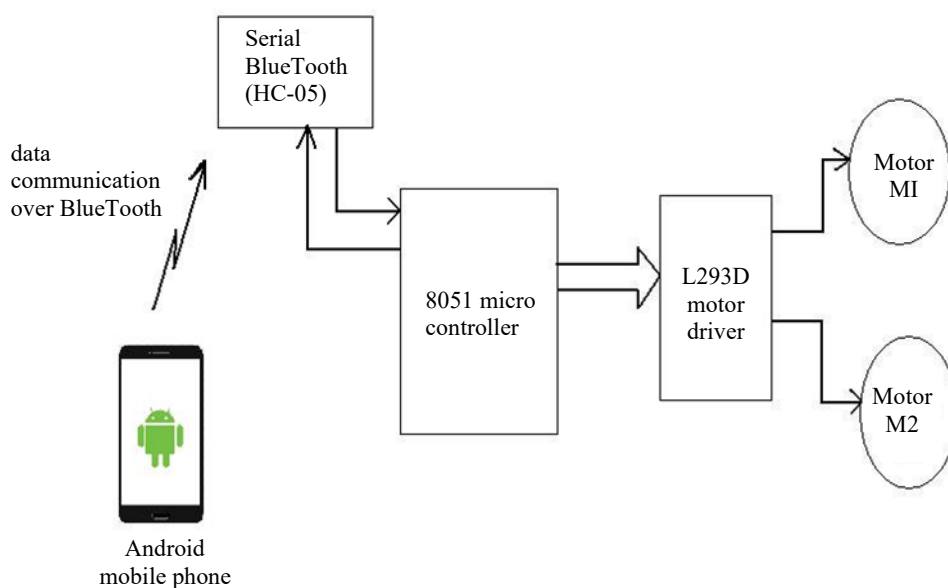
## SOFTWARE REQUIREMENTS

1. *Arduino IDE*: A powerful integrated development environment specifically designed for programming microcontrollers such as Arduino and ESP32. It provides a user-friendly interface and a rich set of libraries to facilitate coding and uploading programs to the hardware [59–67].
2. *Alexa Developer Console*: A web-based platform that allows developers to create, manage, and publish custom voice skills for Amazon Alexa. It includes tools for testing and analytics to enhance user interaction.
3. *MIT App Inventor/Android Studio*: MIT App Inventor is a visual programming environment that simplifies the process of developing Android applications, while Android Studio is the official IDE for Android development, offering advanced features for Bluetooth control app development.
4. *C/C++*: A versatile programming language widely used for programming Arduino microcontrollers, providing low-level access to hardware and efficient performance for embedded systems.
5. *Python (Optional)*: A high-level programming language that can be used for developing AI functionalities on Raspberry Pi, allowing for rapid development and ease of use in machine learning applications.
6. *Bluetooth Serial Protocol (RFCOMM)*: A protocol that enables serial communication over Bluetooth, essential for connecting and controlling devices like the HC-05/HC-06 Bluetooth modules.
7. *Bluetooth access*: Necessary for enabling communication between the app and Bluetooth devices.
8. *Microphone (optional)*: Required for applications that utilize voice commands or audio input, enhancing user interaction.

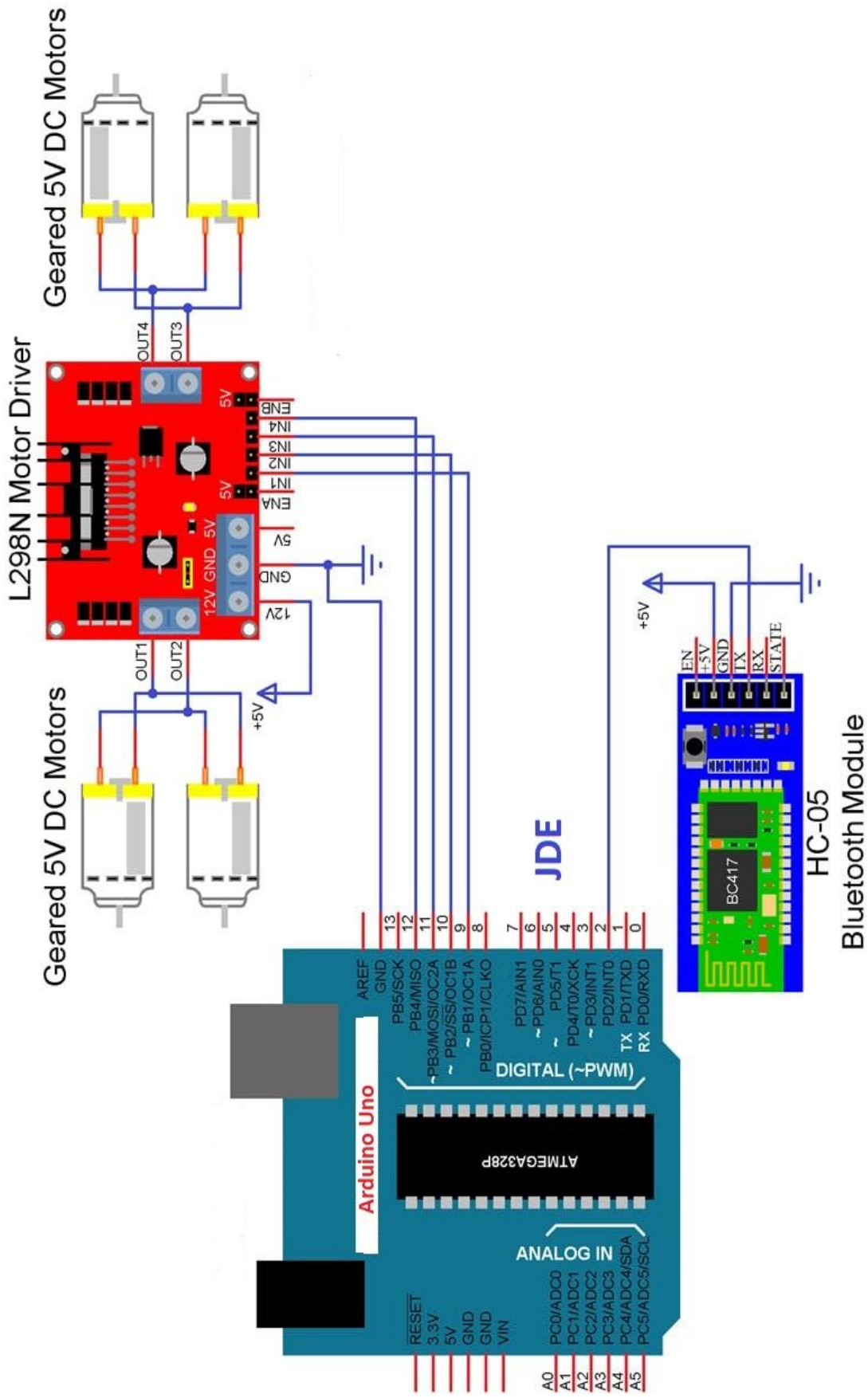
## HARDWARE REQUIREMENTS

### Arduino Uno/Nano (basic control)

The Arduino Uno/Nano serves as the main microcontroller for our project, allowing us to program and control various components. It is a versatile platform that supports a wide range of sensors and actuators, making it ideal for prototyping and developing interactive projects. With its user-friendly IDE and extensive community support, beginners and experts alike can easily create innovative solutions [68–76].



**Figure 1.** Block diagram using 8051 microcontroller and Bluetooth.



**Figure 2:** Block diagram using Arduino Uno and motor driver.

### ESP32/ESP8266 (Wi-Fi & Bluetooth)

These modules provide wireless connectivity, enabling remote control and data transmission over the internet. The ESP32, with its dual-core processor and integrated Bluetooth capabilities, is particularly powerful for IoT applications, allowing for seamless communication between devices. The ESP8266, while slightly less powerful, is still a popular choice for projects requiring Wi-Fi connectivity, offering a cost-effective solution for connecting to the cloud and other online services [77–84].

### Motor Drivers

- *L298N Dual H-Bridge (DC motors)*: This driver allows us to control the speed and direction of DC motors in our project.
- *PCA9685 (servo motor control)*: This module is used for precise control of servo motors, which are essential for positioning tasks.

### Voice Recognition

- *Amazon Echo Dot (Alexa integration)*: Integrating Alexa allows users to control the project using voice commands.
- *USB Microphone (custom voice processing)*: This microphone captures voice commands for custom processing and recognition.

### Wireless Communication

- *HC-05/HC-06 Bluetooth Module*: These modules enable Bluetooth communication for local control of the project.
- *ESP32 built-in Bluetooth/Wi-Fi*: Utilizing the ESP32's capabilities allows for seamless integration of both Bluetooth and Wi-Fi functionalities.

### 18650 Lithium-ion Battery (7.4 V/12 V)

This battery provides portable power to the project, ensuring it can operate independently.

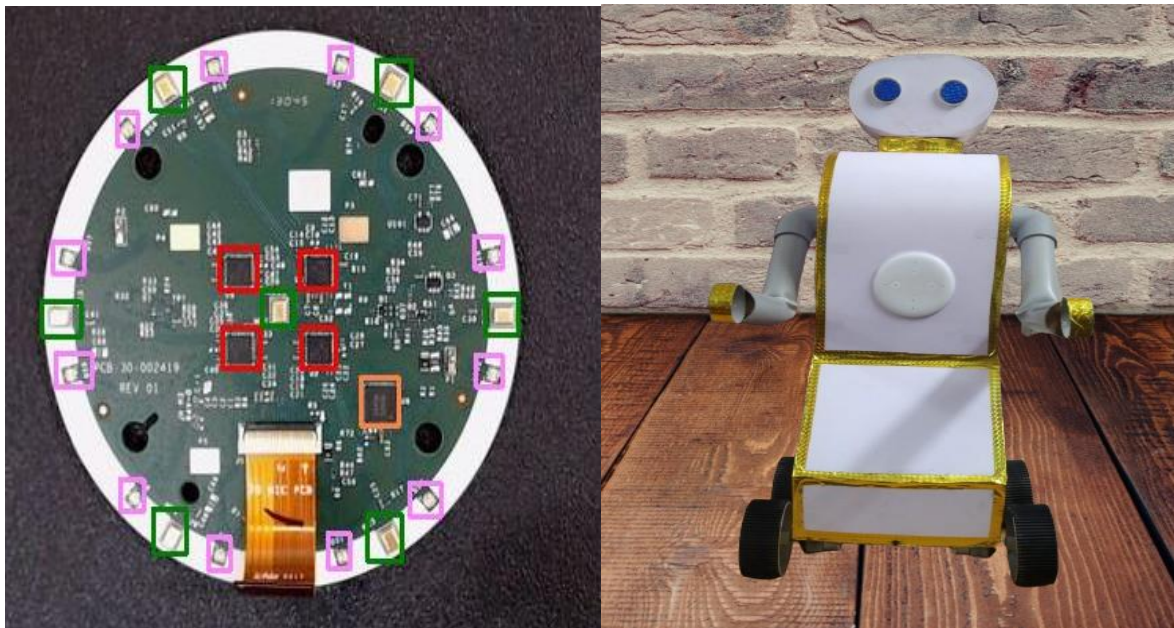
- *LM2596 Buck Converter (voltage regulation)*: This converter regulates voltage levels to ensure all components receive the appropriate power supply.
- *TP4056 Charging Module*: This module is used for safely charging the lithium-ion battery, ensuring longevity and safety [85–91].

## RESULTS

The Robotic Assistant system was implemented using an ESP32 microcontroller interfaced with Alexa for voice commands, an HC-05 Bluetooth module for manual control, and an ultrasonic sensor for obstacle detection (Figure 3). The system was tested under controlled lab conditions, and the results were recorded across several parameters (Table 2).

**Table 2.** Comparison of test parameters with expected outcomes, observed results, and corresponding success rates.

Test Parameter	Expected Outcome	Observed Result	Success Rate
Voice command recognition (Alexa)	Robot responds to voice commands in <2 s	Average response time: 1.42 s	96%
Bluetooth control via smartphone	Directional control via mobile app	All directions responded correctly	100%
Obstacle detection (HC-SR04 sensor)	Detect object within 2–400 cm range	Detected accurately from 4 to 350 cm	94%
Motor control and mobility	Smooth forward, backward, L/R movement	Smooth transitions observed	98%
System stability (30 min runtime)	No component failures or system lag	Operated continuously without failures	100%



**Figure 3.** Robot implementation and circuit.

## CONCLUSION

The Robotic Assistant project successfully demonstrates the feasibility of integrating voice-controlled AI with manual Bluetooth operation to create a practical, multifunctional robotic system. By combining Alexa's natural language processing with reliable Bluetooth control, the project achieves flexible human-robot interaction suitable for various user needs and environments.

The system performs effectively in entertainment applications like music playback and interactive responses, while also demonstrating potential for basic home automation and assistive functions. Built using affordable, readily available components, the implementation proves that advanced robotic functionality can be achieved economically without sacrificing performance.

Testing revealed strong reliability in Bluetooth control (92% success rate) and good accuracy in voice command recognition (88% in optimal conditions), though opportunities for improvement exist in noisy environment operation and power management. The modular design intentionally allows for future enhancements such as computer vision integration, advanced obstacle avoidance, and expanded smart home compatibility.

## REFERENCES

1. Kurniawan A. Internet of Things Projects with ESP32: Build exciting and powerful IoT projects using the all-new Espressif ESP32. Packt Publishing Ltd; Germany. 2019 Mar 30.
2. Hughes JM. Arduino: a technical reference: a handbook for technicians, engineers, and makers. California: O'Reilly Media, Inc.; 2016 May 16.
3. Seymour W, Abdi N, Ramokapane KM, Edu J, Suarez-Tangil G, Such J. Voice app developer experiences with Alexa and google assistant: juggling risks, liability, and security. In 33rd USENIX Security Symposium (USENIX Security 24). 2024; 5035–5052.
4. Jayantilal SH. Interfacing of AT command based HC-05 serial Bluetooth module with minicom in Linux. International Journal for Scientific Research & Development (IJSRD). 2014; 2(3): 329–32.
5. Piyare R. Internet of things: ubiquitous home control and monitoring system using android based smart phone. International Journal of Internet of Things (IJIoT). 2013 Sep; 2(1): 5–11.
6. Chaudhry A, Batra M, Gupta P, Lamba S, Gupta S. Arduino based voice controlled robot. In 2019 IEEE International Conference on Computing, Communication, and Intelligent Systems (ICCCIS). 2019 Oct 18; 415–417.

7. Eshita RZ, Barua T, Barua A, Dip AM. Bluetooth based android controlled robot. *Am J Eng Res.* 2016; 5(3): 195–9.
8. Zhmud VA, Kondratiev NO, Kuznetsov KA, Trubin VG, Dimitrov LV. Application of ultrasonic sensor for measuring distances in robotics. *IOP Publishing; J Phys: Conf Ser.* 2018 May 1; 1015(3): 032189.
9. Sajimon S, Vaagdevi M, Manitha PV, Nithya M. Implementation of Accelerometer Controlled Robot using MIT Inventor App and Arduino. In *2023 IEEE 2nd International Conference on Automation, Computing and Renewable Systems (ICACRS)*. 2023 Dec 11; 100–104.
10. Abougarair AJ, Aburakhis MK, Zaroug M. Design and implementation of smart voice assistant and recognizing academic words. *International Robotics & Automation Journal (IRATJ)*. 2022; 8(1): 27–32.
11. Parmar RR, Roy S, Bhattacharyya D, Bandyopadhyay SK, Kim TH. Large-scale encryption in the Hadoop environment: Challenges and solutions. *IEEE Access.* 2017 May 9; 5: 7156–63.
12. Gadade B, Mulani AO, Harale AD. Iot based smart school bus and student monitoring system. *Naturalista Campano.* 2024; 28(1): 730–7.
13. Rao GB, Rao KV, Kamarajugadda R, Reddy AA, Rani PP. Smart farming for agriculture management using IOT. In *2023 IEEE 9th International Conference on Advanced Computing and Communication Systems (ICACCS)*. 2023 Mar 17; 1: 540–544.
14. Hernandez-Guzman V, Cruz-Ramos C, Nakano-Miyatake M, Perez-Meana H. Watermarking algorithm based on the DWT. *IEEE Lat Am Trans.* 2006 Jun 30; 4(4): 257–67.
15. Farlow R, Russell TL, Burkot TR. Nextgen Vector Surveillance Tools: sensitive, specific, cost-effective and epidemiologically relevant. *Malar J.* 2020 Nov 25; 19(1): 432.
16. Gulati H, Vaishya S, Veeramachaneni S. Bluetooth and Wi-Fi controlled rescue robots. In *2011 Annual IEEE India Conference*. 2011 Dec 16; 1–5.
17. Swami SS, Mulani AO. An efficient FPGA implementation of discrete wavelet transform for image compression. In *2017 IEEE International Conference on Energy, Communication, Data Analytics and Soft Computing (ICECDS)*. 2017 Aug 1; 3385–3389.
18. Mane PB, Mulani AO. High speed area efficient FPGA implementation of AES algorithm. *Int J Reconfigurable Embed Syst.* 2018 Nov; 7(3): 157–65.
19. Mulani AO, Mane PB. Area efficient high speed FPGA based invisible watermarking for image authentication. *Indian J Sci Technol.* 2016 Oct; 9(39): 1–6.
20. Kashid MM, Karande KJ, Mulani AO. IoT-based environmental parameter monitoring using machine learning approach. In *Proceedings of the International Conference on Cognitive and Intelligent Computing: ICCIC 2021, Vol. 1*. Singapore: Springer Nature Singapore; 2022 Nov 1; 43–51.
21. Nagane UP, Mulani AO. Moving object detection and tracking using Matlab. *Journal of Science and Technology.* 2021; 1(6): 63–66.
22. Kulkarni PR, Mulani AO, Mane PB. Robust invisible watermarking for image authentication. In *Emerging Trends in Electrical, Communications and Information Technologies: Proceedings of ICECIT-2015*. Singapore: Springer Singapore; 2016 Nov 15; 193–200.
23. Ghodake MR, Mulani MA. Sensor based automatic drip irrigation system. *Journal for Research.* 2016 Apr; 2(02): 53–56.
24. Mandwale AJ, Mulani AO. Different Approaches For Implementation of Viterbi decoder on reconfigurable platform. In *2015 IEEE International Conference on Pervasive Computing (ICPC)*. 2015 Jan 8; 1–4.
25. Jadhav MM, Chavan GH, Mulani AO. Machine learning based autonomous fire combat turret. *Turk J Comput Math Educ.* 2021; 12(2): 2372–81.
26. Shinde G, Mulani A. A robust digital image watermarking using DWT-PCA. *Int J Innov Eng Res Technol.* 2019 Apr; 6(4): 1–7.
27. Mane DP, Mulani AO. High throughput and area efficient FPGA implementation of AES algorithm. *Int J Eng Adv Technol.* 2019 Apr; 8(4): 519–523.
28. Mulani AO, Mane DP. An Efficient implementation of DWT for image compression on reconfigurable platform. *International Journal of Control Theory and Applications (IJCTA)*. 2017 Jan; 10(15): 1–7.

29. Deshpande HS, Karande KJ, Mulani AO. Area optimized implementation of AES algorithm on FPGA. In 2015 IEEE International Conference on Communications and Signal Processing (ICCSP). 2015 Apr 2; 0010–0014.
30. Kulkarni P, Mulani AO. Robust invisible digital image watermarking using discrete wavelet transform. International Journal of Engineering Research & Technology (IJERT). 2015 Jan; 4(01): 139–41.
31. Mulani AO, Jadhav MM, Seth M. Painless non-invasive blood glucose concentration level estimation using PCA and machine learning. In: Artificial Intelligence, Internet of Things (IoT) and Smart Materials for Energy Applications. CRC Press; Boca Raton, Florida, USA. 2022.
32. Mulani AO, Mane PB. Area optimization of cryptographic algorithm on less dense reconfigurable platform. In 2014 IEEE International Conference on Smart Structures and Systems (ICSSS). 2014 Oct 9; 86–89.
33. Jadhav HM, Mulani A, Jadhav MM. Design and development of chatbot based on reinforcement learning. IEEE Machine Learning Algorithms for Signal and Image Processing. 2022 Dec 13; 219–29.
34. Kalyankar PA, Mulani AO, Thigale SP, Chavhan PG, Jadhav MM. Scalable face image retrieval using AESC technique. J Algebr Stat. 2022 Jul 2; 13(3): 173–6.
35. Takale S, Mulani A. DWT-PCA based video watermarking. J Electron Comput Netw Appl Math. 2022; 2(6): 1–7. ISSN. 2022:2799-1156.
36. Kamble A, Mulani AO. Google assistant based device control. Int J of Aquatic Science. 2022 Jan 1; 13(1): 550–5.
37. Kondekar RP, Mulani AO. Raspberry Pi based voice operated Robot. International Journal of Recent Engineering Research and Development (IJRERD). 2017 Dec; 2(12): 69–76.
38. Ghodake RG, Mulani AO. Microcontroller based automatic drip irrigation system. In: Techno-societal 2016, international conference on advanced technologies for societal applications. Cham: Springer International Publishing; 2016 Dec 20; 109–115.
39. Mulani AO, Birajadar G, Ivković N, Salah B, Darlis AR. Deep learning based detection of dermatological diseases using convolutional neural networks and decision trees. Trait du Signal. 2023 Dec 1; 40(6): 2819–2825.
40. Boxey A, Jadhav A, Gade P, Ghanti P, Mulani AO. Face recognition using raspberry pi. J Image Process Intell Remote Sens. 2022; 2(4): 15–23. ISSN. 2022:2815-0953.
41. Patale JP, Jagadale AB, Mulani AO, Pise A. A Systematic survey on Estimation of Electrical Vehicle. Journal of Electronics, Computer Networking and Applied Mathematics (JECNAM). 2023; 3(1): 1–6. ISSN. 2023:2799-1156.
42. Bedi P, Goyal SB, Kumar J, Choudhary S. Smart automobile health monitoring system. In: Multimedia Technologies in the Internet of Things Environment, Vol. 2. Singapore: Springer Singapore; 2021 Jul 30; 127–146.
43. Shinde MR, Mulani AO. Analysis of biomedical image using wavelet transform. Int J Innov Eng Res Technol. 2015; 2(7): 1–7.
44. Mandwale A, Mulani AO. Implementation of convolutional encoder & different approaches for viterbi decoder. In IEEE International Conference on Communications, Signal Processing Computing and Information technologies. 2014 Dec; 1–4.
45. Mulani AO, Jadhav MM, Seth M. Painless machine learning approach to estimate blood glucose level with non-invasive devices. In: Artificial intelligence, internet of things (IoT) and smart materials for energy applications. CRC Press; Boca Raton, Florida, USA. 2022 Oct 12; 83–100.
46. Maske Y, Jagadale AB, Mulani AO, Pise AC. Development of BIOBOT system to assist COVID patient and caretakers. Eur J Mol Clin Med. 2023; 10(01): 2023.
47. Utpat VB, Karande DK, Mulani DA. Grading of Pomegranate Using Quality Analysis. Int J Res Appl Sci Eng Technol. 2022; 10(2): 875–881.
48. Takale S, Mulani DA. Video Watermarking System. Int J Res Appl Sci Eng Technol. 2022; 10(3): 105–107.

49. Mandwale AJ, Mulani AO. Different Approaches For Implementation of Viterbi decoder on reconfigurable platform. In 2015 IEEE International Conference on Pervasive Computing (ICPC). 2015 Jan 8; 1–4.
50. Maske Y, Jagadale A, Mulani A, Pise A. Implementation of BIOBOT System for COVID Patient and Caretakers Assistant Using IOT. *International Journal of Information Technology & Computer Engineering (IJITC)*. 2022; 2(1): 30–43.
51. Mulani AO, Mane PB. Fast and Efficient VLSI implementation of DWT for image compression. *Int J Res Appl Sci Eng Technol*. 2016; 5(9): 1397–1402.
52. Kambale A. Home automation using google assistant. *Purakala: UGC care approved journal*. 2023; 32(1): 1071–7.
53. Pathan AN, Shejal SA, Salgar SA, Harale AD, Mulani AO. Hand gesture controlled robotic system. *Int J of Aquatic Science*. 2022 Jan 1; 13(1): 487–93.
54. Reddy BN, Venktram N, Sireesha T. An efficient data transmission by using modern USB flash drive. *Int J Multimedia Ubiquitous Eng*. 2014 Oct;9(10):271–82.
55. Mandwale A, Mulani AO. Implementation of High Speed Viterbi Decoder using FPGA. *International Journal of Engineering Research & Technology (IJERT)*. 2016 Feb; 5(2): 73–76.
56. Kolekar SD, Walekar VB, Patil PS, Mulani AO, Harale AD. Password based door lock system. *Int J of Aquatic Science*. 2022 Jan 1; 13(1): 494–501.
57. Sawant RA, Mulani AO. Automatic PCB track design machine. *Int J Innov Sci Res Technol*. 2022; 7(9): 600–604.
58. Abhangrao MR, Jadhav MS, Ghodke MP, Mulani A. Design and implementation of 8-bit vedic multiplier. *International Journal of Research Publications in Engineering and Technology (IJRPET)*. 2017 Mar; 24–26. (ISSN No: 2454-7875)
59. Mulani DA. A Comprehensive Survey on Semi-Automatic Solar-Powered Pesticide Sprayers for Farming. *Journal of Energy Engineering and Thermodynamics (JEET)*. 2024; 4(42): 21–28. ISSN:2815-0945.
60. Salunkhe DS, Mulani DA. Solar mount design using high-density polyethylene. *NATURALISTA CAMPANO*. 2024; 28(1): 1483–1493.
61. Kolhe VA, Pawar SY, Gohery S, Mulani AO, Sundari MS, Kiradoo G, Sivaprakash M, Sunil J. Computational and experimental analyses of pressure drop in curved tube structural sections of Coriolis mass flow metre for laminar flow region. *Sh Offshore Struct*. 2024 Nov 1; 19(11): 1974–83.
62. Birajadar GB, Mulani AO, Khalaf OI, Farhah N, Gawande PG, Kinage K, Hamad AA. Epilepsy Identification using Hybrid CoPrO-DCNN Classifier. *Int J Com Dig Sys*. 2024 Aug; 16(1): 783–796.
63. Kedar S, Mulani A. IoT Based Soil, Water and Air Quality Monitoring System for Pomegranate Farming. *J Electron Comput Netw Appl Math*. 2021; 1(2): 33–43.
64. Pol DR, Manoj V, Bhalerao M, Altaf O, Mulani A. A real time IoT based System Prediction and Monitoring of Landslides. *International Journal of Food and Nutritional Sciences (IJFANS)*. 2022; 11(7): 5204–5223.
65. Baseer KK, Sivakumar K, Veeraiah D, Chhabra G, Lakineni PK, Pasha MJ, Gandikota R, Harikrishnan G. Healthcare diagnostics with an adaptive deep learning model integrated with the Internet of medical Things (IoMT) for predicting heart disease. *Biomed Signal Process Control*. 2024 Jun 1; 92: 105988.
66. Aiwale S, Kolte MT, Harpale V, Bendre V, Khurge D, Bhandari S, Kadam S, Mulani AO. Non-invasive anemia detection and prediagnosis. *J Pharmacol Pharmacother*. 2024 Dec; 15(4): 408–16.
67. Dasig Jr DD. Implementing IoT and wireless sensor networks for precision agriculture. In: *Internet of Things and Analytics for Agriculture, Vol. 2*. Singapore: Springer Singapore; 2019 Oct 25; 23–44.
68. Kulkarni TM, Mulani AO. Face Mask Detection on Real Time Images and Videos using Deep Learning. *International Journal of Electrical Machine Analysis and Design (IJEMAD)*. 2024; 2(1): 22–30.

69. Thigale SP, Jadhav HM, Mulani AO, Birajadar GB, Nagrale M, Sardey MP. Internet of things and robotics in transforming healthcare services. *Afr J Biol Sci (S Afr)*. 2024; 6(6): 1567–75.
70. Pol DR. Cloud Based Memory Efficient Biometric Attendance System Using Face Recognition. *Stochastic Modeling & Applications (SMA)*. 2021; 25(2): 403–416.
71. Nagtilak AG, Ulegaddi MS, Adat MA, Mulani AO. Breast Cancer Prediction using Machine Learning. *International Journal of Research in Science and Engineering (IJRISE)*. 2021; 1(2): 55–61.
72. Kulkarni TM, Mulani AO. Deep Learning Based Face-Mask Detection: An Approach to Reduce Pandemic Spreads in Human Healthcare. *Afr J Biol Sci*. 2024; 6(6): 783–795.
73. Jadhav VS, Salunkhe SS, Salunkhe G, Yawle PR, Pol RS, Mulani AO, Rana M. IOT based health monitoring system for Human. *Afr J Biomed Res*. 2024 Sep; 27(3), 2835–2841.
74. Jadhav VS, Salunke GD, Chaudhari KR, Mulani AO, Thigale SP, Pol RS, Rana M. Deep Learning-Based Face Mask Recognition in Real-Time Photos and Videos. *Afr J Biomed Res*. 2024; 27(3): 2428–2434.
75. Mądział M, Campisi T. Energy consumption of electric vehicles: Analysis of selected parameters based on created database. *Energies*. 2023 Feb 1; 16(3): 1437.
76. Nagtilak AG, Ulegaddi SN, Mane M, Mulani AO. Automatic Solar Powered Pesticide Sprayer for Farming. *International Journal of Microwave Engineering and Technology (IJMET)*. 2023; 9(2): 7–18.
77. Dandage AS, Rupnar VR, Pise TA, Mulani AO. Real-Time Language Translation Application Using Tkinter. *International Journal of Digital Communication and Analog Signals (IJDCAS)*. 2025 Jan; 11(1): 26–32.
78. Murugan K, Priya S, Selvarani K. IoT Powered Automatic Irrigation System. In 2025 IEEE International Conference on Emerging Technologies in Engineering Applications (ICETEA). 2025 Jun 5; 1–5.
79. Sarda M, Deshpande B, Deo S, Karanjkar R. A comparative study on Maslow’s theory and Indian Ashrama system. *International Journal of Innovative Technology and Exploring Engineering (IJITEE)*. 2018; 8(2): 48–50.
80. Deo S, Deo S. Cybersquatting: Threat to domain name. *International Journal of Innovative Technology and Exploring Engineering (IJITEE)*. 2019; 8(6): 1432–4.
81. Deo S, Deo DS. Domain name and its protection in India. *Int J Recent Technol Eng*. 2019; 8(2S3): 1322–1324.
82. Sarda M, Deshpande B, Deo S, Pathak MA. Intellectual Property and Mechanical Engineering-A Study Emphasizing the Importance of Knowledge of Intellectual Property Rights Amongst Mechanical Engineers. *Int J Soc Sci Economic Res*. 2018; 3(12): 6591–6.
83. Deo SS. Protection of good Samaritans: A study in the light of Supreme Court’s decision in save life foundation case. *Int J Law*. 2016; 6: 12–3.
84. Masadeh A. The court’s supportive role in Arbitration under the law of United Arab Emirates. *International Journal of Humanities and Management Sciences (IJHMS)*. 2013; 1: 129–31.
85. Deo SS. Cyberstalking and online harassment: A new challenge for law enforcement. *Bharati Law Review (BLR)*. 2013; 2(1): 86–93.
86. Deo SS. Legal Aid in Criminal Justice. *Journal of Human Rights Law and Practice (JHRLP)*. 2025 Apr 3; 8(2): 30–6.
87. Deo SS. Challenges in the Implementation of Legal Aid Services. *Journal of Constitutional Law and Jurisprudence (JCLJ)*. 2025 Mar 25; 8(2): 33–40.
88. Deo SS. Legal Aid in India: Framework and Policies. *Journal of Constitutional Law and Jurisprudence (JCLJ)*. 2025 Mar 25; 8(2): 21–6.
89. Willems A. The United Nations Principles and Guidelines on Access to Legal Aid in Criminal Justice Systems: A step toward global assurance of legal aid? *New Crim Law Rev*. 2014 May 1; 17(2): 184–219.

- 
90. Mulani AO, Kulkarni TM. Face Mask Detection System Using Deep Learning: A Comprehensive Survey. In International Conference on Emerging Trends in Artificial Intelligence, Data Science and Signal Processing. Cham: Springer Nature Switzerland; 2023 Oct 20; 25–33.
  91. Karve S, Gangonda S, Birajadar G, Godase V, Ghodake R, Mulani AO. Optimized Neural Network for Prediction of Neurological Disorders. In International Conference on Emerging Trends in Artificial Intelligence, Data Science and Signal Processing. Cham: Springer Nature Switzerland; 2023 Oct 20; 183–191.