

## Contemporary Facade Design with Eco-Friendly Material

Mohammad Arshiya Anjum<sup>1</sup>, Sneha Majumder<sup>1</sup>, Priti Kale<sup>1</sup>, Chaitali Kale<sup>1\*</sup>,  
Shubham Paradhe<sup>2</sup>, Shaikh Md Yasin<sup>2</sup>

### Abstract

*Facade and interior design play crucial roles in contemporary architecture, influencing both aesthetic appeal and environmental performance. This research examines the integration of eco-friendly materials in modern architectural design, with a focus on sustainability, energy efficiency, and material innovation. A comparative study is conducted on the rendered exterior and interior of a residential bungalow, analyzing the impact of sustainable materials such as smart glass, recycled composites, and passive cooling techniques on insulation, energy consumption, and indoor comfort. The study further explores how geometric design elements, including angled surfaces and ventilated facades, contribute to optimizing natural light, enhancing airflow, and reducing reliance on artificial cooling systems. Similarly, sustainable interior strategies such as biophilic design, energy-efficient lighting, and eco-friendly furnishings improve indoor environmental quality while reducing the building's carbon footprint. Additionally, a cost-benefit analysis highlights the long-term advantages of sustainable architectural solutions over conventional materials in terms of durability, maintenance, and energy savings. The findings emphasize the growing significance of green architecture and the potential for integrating advanced design technologies, such as adaptive facade systems, solar-integrated materials, and smart interior automation, in future developments. This research provides insights into how contemporary architectural design can effectively merge aesthetics with environmental responsibility, ensuring both visual and functional excellence in modern buildings.*

**Keywords:** Sustainable interiors, contemporary facade, energy-efficient lighting, ventilated facades, biophilic interior design, smart glazing, passive cooling strategies

### INTRODUCTION

Contemporary facade and interior design serve as both an architectural statement and a functional element that influences a building's energy efficiency, ventilation, and overall performance. Beyond aesthetics, facades and interiors contribute to regulating indoor temperatures, optimizing natural lighting, and reducing energy consumption. Modern architectural approaches integrate geometric compositions, smart materials, and passive cooling techniques to enhance both visual appeal and sustainability (Figure 1).

Advanced facade and interior systems now incorporate self-cleaning glass, smart glazing, high-performance insulation materials, and energy-efficient lighting, which not only improve durability but also minimize maintenance requirements. Additionally, the use of angled surfaces, perforated panels, and dynamic shading elements allows for better daylight control and thermal regulation,

#### \*Author for Correspondence

Chaitali Kale  
E-mail: [chaitalikale2006@gmail.com](mailto:chaitalikale2006@gmail.com)

<sup>1</sup>Diploma, Department of Civil Engineering, Marathwada Institute of Technology Polytechnic, Chh. Sambhajinagar, Aurangabad, Maharashtra, India

<sup>2</sup>Lecturer, Department of Civil Engineering, Marathwada Institute of Technology Polytechnic, Chh. Sambhajinagar, Aurangabad, Maharashtra, India

Received Date: March 04, 2025

Accepted Date: April 17, 2025

Published Date: April 20, 2025

**Citation:** Mohammad Arshiya Anjum, Sneha Majumder, Priti Kale, Chaitali Kale, Shubham Paradhe, Shaikh Md Yasin. Contemporary Facade Design with Eco-Friendly Material. Journal of Construction Engineering, Technology & Management. 2025; 15(2): 21–34p.



**Figure 1.** Exterior front elevation.

reducing the reliance on artificial heating and cooling. These strategies make contemporary designs more energy-efficient while maintaining design flexibility [1, 2].

The growing emphasis on sustainable architecture has also influenced both facade and interior design, leading to the adoption of eco-friendly materials, green facades, and renewable energy solutions. Features such as photovoltaic panels, rainwater harvesting systems, and ventilated facades contribute to lower carbon emissions and increased resource efficiency. On the interior side, sustainable flooring, eco-friendly paints, and smart furniture play a crucial role in improving indoor air quality and energy efficiency. As a result, contemporary facade and interior designs are no longer just aesthetic enhancements but essential components in climate-responsive architecture, addressing urban challenges while promoting long-term sustainability [3].

The selection of eco-friendly materials in both facade and interior design plays a vital role in achieving energy efficiency and environmental sustainability. Unlike conventional materials that often contribute to high energy consumption during production and maintenance, sustainable alternatives help in reducing carbon footprints, improving insulation, and promoting resource conservation (Figure 2) [4].

Smart glass technology has emerged as a key innovation in modern facades and interiors, enabling buildings to regulate transparency based on sunlight exposure, which in turn reduces energy consumption for cooling and artificial lighting. Similarly, recycled composite materials, derived from repurposed wood, metal, and plastics, provide durable and sustainable solutions for construction while minimizing industrial waste.



**Figure 2.** Exterior side elevation.

Passive cooling strategies further enhance the sustainability of both facades and interiors. Techniques such as ventilated facades, green walls, and external shading systems optimize natural airflow and thermal comfort, significantly decreasing the reliance on air-conditioning systems. Interior elements such as natural ventilation, biophilic design, and energy-efficient lighting contribute to an improved indoor environment. By incorporating these materials and strategies, contemporary facade and interior designs align with green architecture principles, ensuring that buildings remain energy-efficient, cost-effective, and environmentally responsible over their lifespan [5].

This study examines the rendered exterior and interior of a luxury residential bungalow, designed using SketchUp for 3D modelling and V-Ray for realistic visualization. The research evaluates how facade and interior materials, geometric forms, and sustainability principles have been applied to achieve a modern, functional, and eco-friendly design (Figure 3).

The facade integrates high-performance materials such as smart glass and recycled composites, which contribute to energy efficiency, enhanced insulation, and reduced environmental impact. Similarly, the interior incorporates smart lighting, automated climate control, and ergonomic furniture to enhance both energy efficiency and user comfort. Additionally, the incorporation of passive cooling techniques, shading elements, and strategic material placement ensures optimal thermal performance while maintaining an aesthetically refined appearance [6].

Geometric composition plays a significant role in both facade and interior design, with angled surfaces and structured forms enhancing both aesthetic appeal and energy efficiency. These elements facilitate natural daylight penetration and cross-ventilation, reducing dependence on artificial lighting and mechanical cooling systems. By integrating eco-friendly materials and innovative design strategies, this study demonstrates how contemporary facades and interiors can successfully merge sustainability with modern architectural expression, contributing to the evolution of efficient and visually dynamic living spaces (Figure 4) [7].



**Figure 3.** Living room space optimization.



**Figure 4.** Living room elegance.

### **AIM AND OBJECTIVES**

1. To analyze the impact of eco-friendly materials in contemporary façade and interior design, focusing on sustainability, aesthetics, and energy efficiency.
2. To evaluate the integration of sustainable materials, geometric design elements, and interior spatial planning through a comparative study of a rendered residential bungalow's exterior and interior.
3. To examine how passive cooling strategies, smart lighting, and biophilic design contribute to energy efficiency and occupant well-being in modern architectural spaces.

### **LITERATURE REVIEW**

The impact of lighting on interior and exterior space perception has been analyzed, presenting findings on how brightness levels, spatial clarity, and shading elements affect human interaction with built environments. The study evaluated different lighting strategies in façade design, contributing to the understanding of energy-efficient and aesthetically pleasing architectural solutions [2].

The concept of intellectual luxury in interior design was evaluated, emphasizing the integration of artistic value, creative spatial planning, and material selection in modern architectural spaces. A case analysis of the Qatar National Museum demonstrated how innovative façade design and material application contribute to contemporary aesthetics while maintaining functionality [4].

Advancements in interior and façade lighting technologies were explored, highlighting the integration of smart lighting, IoT-enabled controls, and energy-efficient systems. The study presented strategies for improving building sustainability through daylight-linked lighting solutions and Human-Centric Lighting (HCL), contributing to the future of eco-friendly façade design [5].

An approach to residential lighting design was presented by considering visual requirements, circadian rhythms, and energy performance. The effectiveness of LED technology, tunable lighting, and daylight integration was evaluated to improve energy efficiency and enhance user comfort, aligning with sustainable façade principles [6].

The role of color psychology in architectural interior spaces was examined, focusing on how color selection influences spatial perception and environmental experience. An analysis of warm and cool color schemes and their impact on mood was presented, which is essential in contemporary façade aesthetics and material choices [7].

## **SYSTEM DEVELOPMENT**

### **Research Approach**

This study follows a comparative and analytical approach to examine the use of eco-friendly materials in modern façade and interior design. The research focuses on understanding how material selection, geometric façade design, passive cooling techniques, and sustainable interior elements contribute to energy efficiency and visual appeal in buildings. To achieve this, a three-dimensional model of a residential bungalow exterior and interior has been created using SketchUp for modelling and V-Ray for rendering [8, 9].

A comparative analysis is conducted by evaluating the facade and interior with conventional materials and then replacing them with sustainable alternatives. This comparison helps in assessing the impact of eco-friendly materials on insulation, energy consumption, and overall environmental benefits. Additionally, the role of geometric elements such as angled surfaces, shading devices, and façade depth is examined to determine how they improve natural lighting and ventilation, ultimately reducing the need for artificial cooling and lighting [10].

The study integrates modern design principles and sustainable construction techniques to highlight the benefits of contemporary façade and interior materials in achieving long-term energy efficiency and environmental responsibility. The rendered model provides a realistic representation of material performance, making it possible to analyze the practical application of sustainable solutions in modern architecture (Figures 5 and 6).

### **Tools and Techniques**

This study utilizes digital tools to design and analyze the façade and interior of a residential bungalow. SketchUp is used for three-dimensional modelling, allowing for precise visualization of the building's exterior and interior. V-Ray is applied for rendering, providing a realistic representation of materials, lighting, and shading effects. These tools help in evaluating how different façade and interior materials interact with natural light and environmental conditions [11].

AutoCAD serves as a reference tool for maintaining accurate measurements and ensuring that the design aligns with architectural standards. The façade and interior spaces are designed using eco-friendly materials such as smart glass, recycled composites, and sustainable wood, which are tested under various lighting conditions to assess their impact on energy efficiency and aesthetics [12].



**Figure 5.** Dining.



**Figure 6.** Kitchen.

Rendering techniques simulate daylight effects, reflections, and material textures, offering insights into how sustainable materials perform in real-world scenarios. These digital tools help in analyzing the effectiveness of façade and interior elements in terms of insulation, ventilation, and overall sustainability while maintaining a visually appealing design (Figure 7).

### **Comparative Study and Analysis**

This study involves a comparative analysis to assess the impact of eco-friendly materials on facade and interior design. The research focuses on the rendered exterior and interior of a residential bungalow, comparing conventional materials with sustainable alternatives. The evaluation considers key factors such as thermal insulation, energy efficiency, durability, and environmental impact to determine the benefits of using environmentally responsible materials.



**Figure 7.** Exterior in Sketchup.

In addition to material selection, the study examines the influence of geometric elements in facade and interior design. Features like angled surfaces, shading devices, and ventilated facades are analyzed for their role in optimizing natural lighting, enhancing airflow, and promoting passive cooling. Similarly, interior elements such as biophilic design, smart lighting, and sustainable furniture are evaluated for their contributions to energy efficiency and occupant well-being. By reducing dependence on artificial lighting and mechanical cooling systems, these design elements contribute to improved energy efficiency and indoor comfort.

Through this analysis, the research highlights how contemporary facade and interior design can integrate sustainability without compromising aesthetics. The findings provide insights into how innovative material choices and architectural strategies can create energy-efficient, visually appealing, and environmentally responsible living spaces.

### **Sustainability Considerations**

This study incorporates sustainability principles into both facade and interior design by focusing on material selection, energy efficiency, and environmental impact. The use of eco-friendly materials such as smart glass, recycled composites, and sustainable wood helps reduce energy consumption while improving insulation and durability. These materials are chosen to minimize the carbon footprint of the building and enhance long-term sustainability.

Passive cooling techniques, including ventilated facades, shading devices, green walls, and strategically placed openings, are integrated into the design to improve natural ventilation and thermal comfort. These features reduce the need for mechanical cooling systems, leading to lower energy consumption and operational costs. Additionally, the facade and interior design consider elements such as rainwater collection, heat-reflective coatings, and smart climate control systems to further enhance environmental performance.



**Figure 8.** Exterior with sunlight.



**Figure 9.** Exterior without sunlight.

By implementing sustainable materials and energy-efficient design strategies, the study demonstrates how contemporary facades and interiors can balance aesthetics with environmental responsibility. The findings highlight the potential of modern architectural systems to contribute to green architecture while maintaining functional and visual appeal (Figures 8 and 9).

### Expected Outcomes

This study aims to demonstrate how the integration of eco-friendly materials in contemporary facade and interior design contributes to sustainability, energy efficiency, and aesthetics. By analyzing a rendered residential bungalow exterior and interior, the research is expected to highlight the advantages of using sustainable materials over conventional ones in terms of thermal insulation, durability, and reduced environmental impact.

The study is also expected to show how geometric facade and interior elements, such as shading devices, ventilated surfaces, smart lighting, and biophilic design, enhance natural lighting and airflow, reducing dependence on artificial cooling and lighting systems. Additionally, the comparative analysis will provide insights into how modern architectural designs can achieve a balance between aesthetics and environmental responsibility.

The findings will contribute to the understanding of sustainable facade and interior design by demonstrating the practical application of innovative materials and passive design techniques. This research aims to serve as a reference for future architectural projects seeking to incorporate energy-efficient and visually appealing solutions, with sustainable features used in the facade design (Table 1).

### RESULTS AND DISCUSSION

This section presents the key findings of the project and discusses their significance in achieving a balance between aesthetic appeal, functionality, and sustainability in interior and exterior design. The results are analyzed to determine how the integration of eco-friendly materials, optimized spatial planning, lighting strategies, and facade elements contribute to energy efficiency, user comfort, and modern architectural expression.

#### Results

The project successfully demonstrates the application of luxury interior and contemporary facade design while maintaining a strong focus on sustainability and energy efficiency. The use of SketchUp for 3D modeling, V-Ray for rendering, and AutoCAD for layout referencing allowed for precise visualization and refinement of the design elements. The results highlight several important aspects, categorized as interior design outcomes and exterior facade improvements.

**Table 1.** Sustainable features used in the facade design.

Sustainable feature	Function	Benefits
Smart Appliances	Optimizes energy usage and enhances efficiency	Reduces electricity consumption and increases automation
Voice-Controlled Devices	Automates lighting, ventilation, and appliances	Enhances energy efficiency and convenience
Wooden Material and Flush Doors	Uses renewable wood for doors and furniture	Improves insulation, reduces carbon footprint
Greenery and Vertical Plants	Enhances facade with natural vegetation	Improves air quality, provides natural cooling
Eco-Friendly Paints	Uses low-VOC and non-toxic paints	Reduces indoor air pollution and enhances durability
Large Flush and Glass Doors	Maximizes natural light and ventilation	Reduces energy use for lighting and cooling
Energy-Efficient Lighting (LED and Strip Lights)	Uses minimal power while enhancing ambiance	Reduces electricity consumption, improves longevity
Double-Glazed Windows	Provides insulation and soundproofing	Reduces heat loss and cooling costs
Heat-Reflective Roof Coating	Reflects sunlight to reduce heat absorption	Keeps interiors cooler, lowers air conditioning needs

---

### ***Interior Design Outcomes***

The interior design was developed with an emphasis on spatial efficiency, lighting optimization, material selection, and the integration of smart technologies. The goal was to create a modern, luxurious, and comfortable living environment while ensuring that space utilization was maximized.

### ***Aesthetic and Functional Enhancements***

- The use of light-colored palettes for walls and furniture created an open and bright atmosphere, enhancing natural lighting and making the spaces feel more expansive.
- Custom-designed furniture in SketchUp allowed for the efficient use of space while maintaining a stylish and modern aesthetic. The furniture was tailored to complement the overall theme of the interior.
- The selection of high-quality materials, such as wooden finishes and polished surfaces, contributed to the luxurious feel of the interior while maintaining durability.

### ***Lighting Strategy and Smart Technology Integration***

- A combination of general, accent, ambient, and task lighting was used to create a well-balanced and aesthetically pleasing environment.
- Strip lighting, cove lighting, and warm LED lights were strategically placed to enhance ambiance while reducing glare.
- Voice-controlled smart lighting systems were implemented to improve energy efficiency and user convenience, allowing for automated adjustments based on occupancy and time of day.

### ***Space Optimization and Privacy Considerations***

- The ground-floor office was partitioned to ensure privacy while maintaining an open and accessible layout.
- The unused space beneath the staircase was converted into a functional area, integrating it with the adjacent bathroom for better space utilization.
- Open-plan areas were designed to promote smooth circulation and connectivity between different sections of the house, while enclosed spaces were carefully planned to enhance privacy where needed.

### ***Exterior Facade and Sustainability Improvements***

The exterior design aimed to blend contemporary aesthetics with sustainability principles, focusing on the selection of eco-friendly materials, passive cooling techniques, and energy-efficient facade elements.

### ***Material Selection and Energy Efficiency***

- Smart glass was used for windows and doors to optimize natural lighting while reducing heat gain, thus lowering the reliance on artificial cooling systems.
- Recycled composite materials were incorporated into facade elements, reducing environmental impact while maintaining durability.
- Wooden materials were selected for doors and structural elements, providing natural insulation and an elegant exterior finish.

### ***Geometric Facade Elements and Passive Cooling Strategies***

- The integration of angled surfaces and shading devices played a key role in minimizing direct sunlight exposure, preventing overheating while enhancing natural daylight distribution.
- Ventilated facade systems were included to allow airflow between the exterior layers, helping in temperature regulation and reducing energy consumption for cooling.
- Green walls and vertical gardens were added to improve insulation, absorb excess heat, and enhance the natural aesthetics of the exterior.

### ***Architectural Enhancements and Outdoor Spaces***

- Large flush doors and glass openings were installed in key areas to establish a connection between indoor and outdoor spaces, promoting natural ventilation.
- The vertical duct above the first-floor sit-out area was utilized to install a large chandelier, adding a unique architectural feature to the design.
- Terrace spaces were incorporated on multiple floors, providing additional outdoor relaxation areas while improving air circulation within the structure (Figure 10).

### **Discussion**

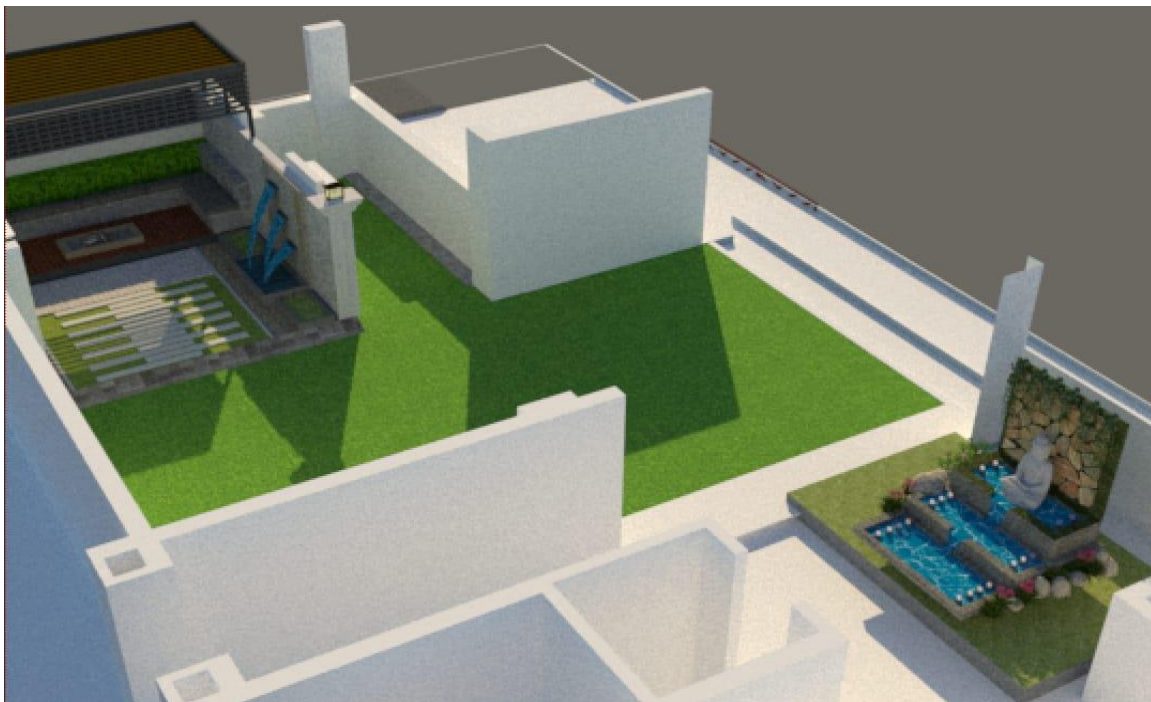
The results indicate that a well-planned interior and exterior design can successfully balance aesthetic appeal, sustainability, and functional efficiency. The integration of eco-friendly materials, passive cooling strategies, and smart technologies has significantly contributed to improving the energy performance and environmental impact of the design.

### ***Role of Sustainability in Design***

- The use of energy-efficient materials and passive cooling techniques led to a noticeable reduction in energy consumption, particularly in terms of artificial lighting and air conditioning.
- The selection of low-VOC paints, recycled materials, and wooden elements ensured that indoor air quality was maintained while reducing environmental footprint.
- Smart lighting systems and automated controls played an essential role in optimizing power usage and minimizing wastage.

### ***Impact of Lighting and Space Utilization***

- The application of multiple lighting layers improved the interior ambiance, allowing for a flexible and adaptable lighting scheme.
- Strategic furniture placement and partitioning solutions successfully maximized available space, ensuring that privacy and circulation were maintained in balance.
- The use of open and enclosed spaces allowed for seamless transitions between areas while maintaining a well-structured layout.



**Figure 10.** Terrace.

### ***Comparison with Traditional Design Approaches***

- Unlike traditional interior designs, which often prioritize aesthetic appeal over functionality, this project successfully integrated practical design solutions with modern aesthetics and sustainability.
- In conventional facades, energy efficiency is often compromised due to the use of heat-absorbing materials, whereas the incorporation of smart glass, ventilated facades, and reflective coatings in this project significantly improved thermal regulation.
- The use of SketchUp for modelling and V-Ray for realistic visualization provided an advantage in assessing design performance before actual implementation, reducing material waste and improving design accuracy.

### ***Challenges Faced and Solutions Implemented***

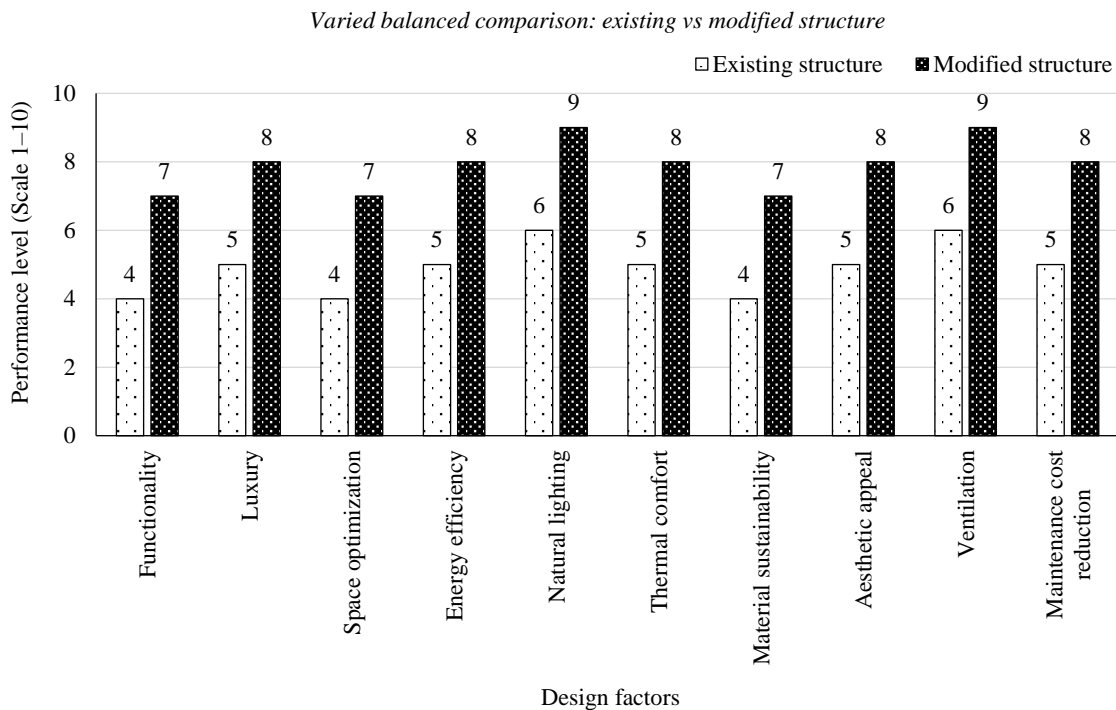
- One of the challenges was selecting materials that balanced sustainability with durability. This was addressed by researching alternative materials like recycled composites and energy-efficient glazing.
- Ensuring privacy while maintaining openness was another challenge, which was resolved through thoughtful partitioning and furniture placement.
- Achieving optimal lighting while maintaining energy efficiency required the integration of automated lighting controls and strategically placed openings to maximize natural daylight (Figures 11 and 12).

### ***Future Recommendations***

- Future improvements could include integrating solar panels into the facade design to further enhance energy efficiency.
- The implementation of more advanced automation systems, such as motion-sensor lighting and smart climate control, could improve sustainability.
- Expanding the use of biophilic design elements, such as water features and additional green facades, could further enhance environmental performance.



**Figure 11.** Bedroom with hidden door.



**Figure 12.** Varied balanced comparison: existing vs modified structure.

## CONCLUSION

1. This study highlights the importance of eco-friendly materials in contemporary facade and interior design, demonstrating their role in enhancing energy efficiency, sustainability, and aesthetics.
2. The use of smart glass, recycled composites, and wooden elements has proven effective in reducing energy consumption, improving insulation, and minimizing environmental impact in both facade and interior applications.
3. Passive cooling strategies, including ventilated facades, shading elements, and biophilic interior designs, contribute to better thermal comfort and reduced reliance on artificial cooling systems.
4. Geometric facade elements, such as angled surfaces and structured shading devices, enhance daylight distribution and natural ventilation, leading to lower operational energy costs, while smart spatial planning in interiors maximizes energy efficiency and comfort.
5. The study confirms that contemporary facade and interior design can balance aesthetics with sustainability, ensuring that buildings are both visually appealing and environmentally responsible.
6. A comparison between traditional and modern facade and interior materials reveals that sustainable solutions have long-term advantages, including lower maintenance costs, improved durability, and better energy performance.
7. SketchUp modelling and V-Ray rendering provided detailed insights into material selection, facade and interior performance, and lighting impact, making them valuable tools for architectural visualization.
8. The research underscores the growing need for sustainable architecture, encouraging the use of eco-friendly coatings, green walls, biophilic interior elements, and energy-efficient glazing systems in modern construction.
9. The findings suggest that future advancements in facade and interior design should include smart adaptive facades, integrated solar panels, and automated interior climate control systems to further enhance sustainability.

## REFERENCES

1. Boyce PR. Lighting quality and office work: A field simulation study. Troy (NY): Lighting Research Center, Rensselaer Polytechnic Institute; 2006; 1–167.

2. Shiratuddin MF. The impact of lighting on impressions of interior space. *J Environ Psychol.* 2014; 36: 21–9.
3. Sitanggang N. The effect of Google SketchUp and need for achievement on the students' learning achievement of building interior design. *J Educ Technol.* 2021; 21(4): 315–28.
4. Kareem AT. The intellectual luxury in the interior design. *J Archit Urban Des.* 2022; 8(3): 45–60.
5. Doulos LT. The future of interior lighting is here. *Sustainability.* 2022; 14(13): 7044.
6. Kaymaz E. A proposal on residential lighting design considering visual requirements, circadian factors, and energy performance of lighting. *Light Res Technol.* 2023; 55(2): 195–212.
7. Feng W. Color design of modern architectural interior space based on environmental psychology. *Front Psychol.* 2022; 13: 926301.
8. Veitch JA, Newsham GR. Determinants of lighting quality I: State of the science. *J Illum Eng Soc.* 1998; 27(1): 92–106.
9. Flynn JE. A study of subjective responses to low-energy and non-uniform lighting systems. *Light Des Appl.* 1977; 7(2): 6–15.
10. Küller R, Ballal S, Laike T, Mikellides B, Tonello G. The impact of light and colour on psychological mood: a cross-cultural study of indoor work environments. *Ergonomics.* 2006; 49(14): 1496–507.
11. Steffy GR. *Architectural lighting design.* 3rd Edn. New York: Wiley; 2008.
12. Altomonte S. Daylight and the workplace: An overview. *Environ Design + Constr.* 2008; 6(3): 45–54.