

# Swastham: The Healthcare Ecosystem

C.M. Pandit<sup>1</sup>, Prathmesh Magadam<sup>2</sup>, Omkar Kurund<sup>2\*</sup>, M.S. Prajakta Gaikar<sup>2</sup>

## Abstract

*In the modern, fast-paced world, ensuring prompt and efficient healthcare services has become more crucial than ever. The demand for accessible, timely, and high-quality healthcare is constantly growing, and this project seeks to address this need by introducing a comprehensive healthcare ecosystem. This integrated platform is designed to optimize healthcare delivery and significantly enhance patient outcomes by incorporating advanced digital solutions. The system will allow users to conveniently schedule appointments online, making it easier for individuals to book consultations with healthcare professionals based on their availability and preferences. Additionally, it will offer voice and video consultation options, enabling patients to receive medical care remotely, which is particularly beneficial for those with limited access to physical healthcare facilities or those who prefer virtual consultations. Furthermore, the platform will provide a wide range of services, including specialized programs for chronic conditions, personalized wellness plans, and preventive healthcare initiatives. By centralizing these services into one seamless system, the healthcare ecosystem aims to improve overall healthcare accessibility and provide a more efficient, patient-centered approach to managing health and well-being. Ultimately, this ecosystem will contribute to better health outcomes by fostering proactive care and reducing the barriers typically associated with traditional healthcare systems.*

**Keywords:** Integrated healthcare ecosystem, telemedicine solutions, wearable health monitoring devices, real-time patient health tracking, artificial intelligence in healthcare

## INTRODUCTION

The healthcare sector has undergone a significant transformation, with the adoption of digital solutions aimed at making medical services more accessible, efficient, and effective. Conventional healthcare systems often struggle with issues such as extended patient wait times, limited access to remote regions, and inefficient health-record management [1]. Leveraging technology in healthcare not only strengthens patient involvement, but also streamlines the overall healthcare delivery process.

### \*Author for Correspondence

Omkar Kurund

E-mail: [omkarkurund98@gmail.com](mailto:omkarkurund98@gmail.com)

<sup>1</sup>Professor, Department of Computer Engineering, Vishwaniketan's Institute of Management Entrepreneurship & Engineering Technology [iMEET] (Affiliated to Mumbai University), Khalapur, Raigad, Maharashtra, India.

<sup>2</sup>Student, Department of Computer Engineering, Vishwaniketan's Institute of Management Entrepreneurship & Engineering Technology [iMEET] (Affiliated to Mumbai University), Khalapur, Raigad, Maharashtra, India

Received Date: February 08, 2025

Accepted Date: March 07, 2025

Published Date: April 15, 2025

**Citation:** C.M. Pandit, Prathmesh Magadam, Omkar Kurund, M.S. Prajakta Gaikar. Swastham: The Healthcare Ecosystem. Journal of Computer Technology & Applications. 2025; 16(2): 1–7p.

A key innovation of this project is the incorporation of a health tracker band designed to monitor essential vital signs, including heart rate, oxygen levels, and body temperature. In the event of irregularities or emergencies, the band will automatically send alerts to emergency services like ambulances, ensuring real-time tracking of the patient's location and health condition. This integrated ecosystem is designed to strengthen the connection between patients and healthcare providers, offering a comprehensive solution that supports routine health management, emergency response, and continuous care [2].

This project presents a healthcare ecosystem designed to facilitate seamless access to medical services through digital platforms. The system

enables users to schedule appointments online, access telemedicine services, and monitor their health in real-time using wearable devices. By supporting remote consultations via video and voice calls, the platform alleviates pressure on healthcare facilities while enhancing accessibility for patients, who may face challenges in reaching medical professionals. Furthermore, artificial intelligence (AI)-powered health monitoring can help identify irregularities and provide early alerts for potential health concerns.

The proposed system also emphasizes preventive health care by incorporating wellness programs and chronic disease management. It seeks to establish a more connected, efficient, and proactive healthcare experience, thus strengthening the link between patients and medical professionals.

## LITERATURE REVIEW

In recent years, digital healthcare ecosystems have gained prominence in their role in improving patient care. Studies in telemedicine indicate that remote consultations help reduce hospital visits, while enhancing accessibility, particularly in rural areas. Research on wearable health monitoring devices suggests that continuous tracking of vital signs aids in the early detection of conditions, such as cardiovascular diseases and diabetes. While existing solutions, such as Apple Health and Fitbit, offer personal health tracking, they do not incorporate integrated emergency response systems. This study aims to bridge this gap by combining real-time health monitoring with emergency alert mechanisms. On the basis of research papers that we have referred, we got to know the following information.

### **Title: Online Healthcare Practices and Associated Stakeholders [3].**

- *Authors:* Amresh Panda, Sanjay Mahapatra
- *Year:* 2021 (July)
- *Limitation:* Current healthcare systems often operate in silos, with services like appointment booking, telemedicine, health monitoring, and emergency services being handled by separate platforms. This results in a lack of interoperability, making it difficult for patients to have a continuous, cohesive care experience across different services.

### **Title: Enhancing Online Patient Support through Health-Care Knowledge in Online Health Communities [4].**

- *Authors:* Donghua Chen, Runtong Zhang, Kecheng Liu, Lei Hou
- *Year:* 2018 (August)
- *Limitation:* Although wearables like Fitbit and Apple Watch track health data, this information is rarely integrated into mainstream healthcare systems in real time. Most existing systems rely on periodic updates from patients, rather than continuously monitoring vital signs like heart rate and oxygen levels. This lack of real-time monitoring can lead to missed opportunities for early intervention in critical cases.

### **Title: Smart Healthcare System Implementation Challenges: A Stakeholder Perspective [5]**

- *Authors:* Muhammad Hamza, Muhammad Azeem Akbar
- *Year:* 2022 (August)
- *Limitation:* In many systems, patients or their families must manually contact emergency services in the case of a health crisis. This can lead to delays in response time, especially when patients are unable to communicate effectively due to their condition. There is limited integration of automated alert systems that can trigger emergency notifications based on real-time health data.

### **Title: Generative Artificial Intelligence in Healthcare from the Perspective of Digital Media: Applications, Opportunities and Challenges [6]**

- *Authors:* Rui Xu, Zhong Wang
- *Year:* 2024 (June)
- *Limitation:* Access to healthcare services in rural or underserved areas remains a challenge. While telemedicine has made strides in bridging this gap, existing systems often fail to provide

reliable connectivity and comprehensive healthcare solutions to people in these regions, particularly during emergencies or for continuous monitoring.

**Title: Doctor-Patient Relationship Strength's Impact in an Online Healthcare Community [7]**

- *Authors:* Shanshan Guo, Xitong Guo, Xiaofei Zhang, Doug Vogal
- *Year:* 2017 (March)
- *Limitation:* Most current healthcare platforms do not offer personalized health care programs based on real-time data. Care programs are often generalized and not tailored to the specific needs or conditions of individual patients. This reduces the effectiveness of preventive care and chronic disease management [7].

**Title: Ecosystem Model for Healthcare Platform [8]**

- *Author:* Viswanadham Nukala
- *Year:* 2021 (December)
- *Limitation:* Quality of the medicines; disposal of non-degradable wastes like unused medicines, used needles, syringes and other medical equipment; inefficiencies in handling emergency cases, ineffective handling of cases that can lead to interchanging of records or loss of records, etc.

**Title: Wearable IoT Enabled Real-Time Health Monitoring System [9]**

- *Authors:* Jie Wan, Munassar A. A. H. Al-Awlaqi, MingSong Li, Michael O'Grady, Xiang Gu, Jin Wang, Ning Cao
- *Year:* 2018
- *Limitation:* Internet of things (IoT) technology promises huge potential and benefits in the domain of personalized healthcare. The wireless body area network that consists of wearable sensing devices and communication modules have become the key enablers.

**PROBLEM STATEMENT**

Existing healthcare systems encounter multiple challenges that affect both patient care and operational efficiency:

1. *Challenges in accessing healthcare services:* Individuals in rural or remote areas frequently encounter obstacles in receiving timely medical attention due to geographical limitations and insufficient healthcare infrastructure [9].
2. *Inefficient appointment scheduling:* Patients frequently face prolonged wait times and challenges in booking consultations with healthcare providers, leading to delays in medical care.
3. *Lack of continuous health monitoring:* Traditional healthcare systems primarily rely on occasional checkups, which can lead to missed diagnoses and delayed intervention for manageable health conditions [10].
4. *Delayed emergency intervention:* In life-threatening situations, the absence of real-time health monitoring and slow emergency response can lead to serious consequences.
5. *Fragmented health records:* The lack of a unified medical record system in many healthcare facilities hinders doctors from easily accessing and managing patient history.

**LIMITATIONS OF AN EXISTING SYSTEM**

- *Limited automation:* Many healthcare platforms continue to depend on manual processes, resulting in inefficiencies in scheduling appointments, managing health records, and responding to emergencies.
- *Excessive dependence on physical consultations:* Traditional healthcare relies heavily on in-person visits, limiting access to timely medical care for patients in remote or underserved areas [11].
- *Lack of integration with wearable technology:* Many existing healthcare solutions do not utilize IoT-enabled wearable devices for real-time health monitoring, thereby reducing opportunities for proactive medical intervention.

- *Concerns over data privacy and security:* Many healthcare systems lack strong security protocols to safeguard sensitive health information, thereby increasing the risk of privacy breaches and cyber threats.

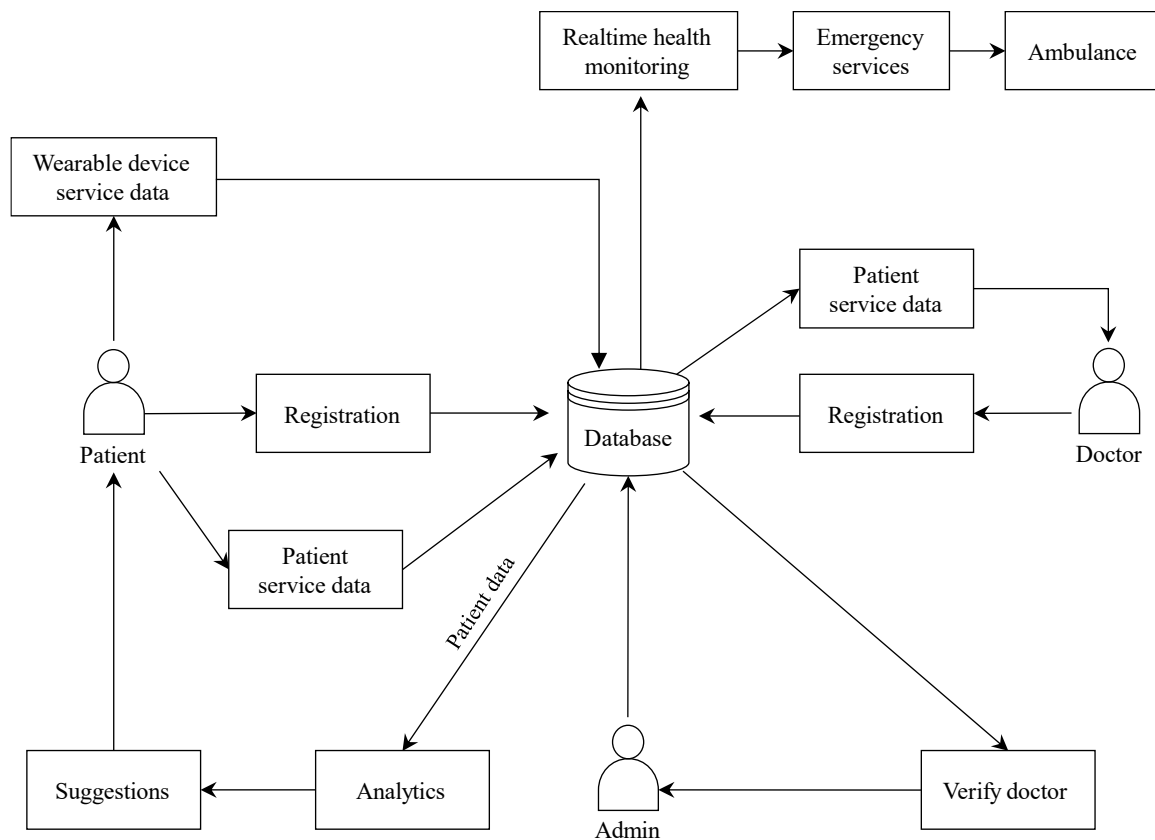
## METHODOLOGY

The development of the Swastham Healthcare Ecosystem follows a systematic approach to ensure efficiency and scalability:

- *Requirement analysis*
  - Conduct comprehensive research and collect insights from healthcare professionals, patients, and technology specialists.
  - Determine essential features needed to enhance healthcare services and emergency response mechanisms.
- *System design*
  - *Develop a secure cloud infrastructure:* Establish a cloud-based system to facilitate protected data storage and support real-time health monitoring.
  - *Create a user-friendly interface:* Develop an intuitive and accessible interface tailored to meet the needs of both patients and healthcare providers.
  - *Integrate role-based access control:* Establish a security framework that restricts access based on user roles to ensure data privacy and protection.
- *System architecture:* The Swastham Healthcare Ecosystem (Figure 1) is built on a cloud-based architecture that seamlessly integrates wearable IoT devices, telemedicine services, and AI-powered health analytics. The system comprises multiple components, including a wearable health tracker, a real-time monitoring server, an AI-driven health analysis engine, and a secure telemedicine platform.
- *AI-Driven health analysis*
  - Develop machine learning algorithms to assess patient health data and identify irregularities.
  - Generate personalized health insights and recommendations using historical records and real-time vital signs.
- *Emergency response mechanism*
  - Create an automated alert system to notify emergency services and designated contacts when health irregularities are detected.
  - Integrate real-time location tracking to help emergency responders reach patients swiftly.
- *Telemedicine and appointment scheduling*
  - Develop an efficient appointment booking system that supports both in-person and virtual consultations.
  - Integrate secure video and voice calling functionalities to facilitate remote doctor-patient interactions [12].
- *Testing and validation*
  - Carry out comprehensive testing to verify system reliability, accuracy, and security.
  - Conduct usability assessments with healthcare professionals and patients to enhance the user experience.
- *Deployment and continuous improvement*
  - Deploy the platform on cloud infrastructure for scalability and availability.
  - Regularly enhance the system by incorporating user feedback and leveraging emerging technological advancements.

## Technology Stack

- *Frontend:* A dynamic user interface built using React.js, chosen for its component-based architecture and efficient rendering capabilities.
- *Backend:* Server infrastructure powered by Node.js and Express.js, designed to handle high-concurrency API (application programming interface) requests while maintaining optimal performance



**Figure 1.** Swastham system architecture.

- *Database:* A dual-database approach combining MongoDB for flexible health data storage and real-time updates, complemented by PostgreSQL for managing structured relational data
- *AI and machine learning:* Advanced machine learning implementations utilizing either TensorFlow or PyTorch frameworks to develop predictive models for health analytics.
- *Cloud infrastructure:* Distributed cloud computing architecture leveraging either Amazon Web Services or Google Cloud Platform, ensuring encrypted data storage, scalable computing resources, and robust security protocols.
- *Device connectivity:* Implementation of energy-efficient Bluetooth protocols to establish reliable connections with wearable sensors enabling continuous health monitoring while optimizing battery life.

## EXPECTED RESULTS

Implementation of the plan will create a healthcare facility with features such as appointment scheduling, telemedicine, urgent care, and emergency services. The system was built on a platform that uses cloud-based technology for real-time data processing and storage. Wearable health tracking devices can monitor vital signs, such as heart rate, oxygen levels, and body temperature, and transmit data in real time using IoT technology. Emergency notification systems analyze health data to identify abnormalities and send alerts to healthcare professionals and emergency services, including location tracking. This user interface, which can be accessed via mobile devices and the web, makes it easy to schedule appointments, have video chats, and access medical information. Keep your data safe with access to and compliance with healthcare regulations such as HIPAA (Health Insurance Portability and Accountability Act).

Access to health care has become easier, especially in remote areas, with online appointments and telemedicine. Automating healthcare and emergency notifications increases efficiency by reducing manual effort. In addition, continuous data collection enables personalized care and long-term health

management. This integrated approach addresses the existing healthcare limitations and provides a proactive and seamless healthcare experience.

## CONCLUSION

The growth of the healthcare ecosystem, which includes online appointments, telemedicine, health monitoring, and emergency services, has addressed many gaps in the already fragmented healthcare landscape. The system combines real-time health monitoring, remote medical consultation, and automatic emergency notifications to provide patients with information regarding more effective and efficient treatment. Personal services, such as telemedicine, do not include basic health information or emergency services. The proposed system provides a unified platform that not only improves patient access to care but also enhances the quality of care through continuous monitoring and immediate response. For example, health trackers can sound an alarm in the event of an emergency, which can shorten response times and improve outcomes in critical situations (health technology zone).

## Future Scope

- Swastham Smartcard and Plans: By generating a smartcard, we will provide our users with efficient facilities and extra benefits.
- Doctors for Home Service: By hiring doctors and providing home service facilities to people who need them.
- Swastham Ambulance: By launching ambulances and locating them at a distance of 10 km.
- Connect with Insurance Companies: To determine whether the patient is using any insurance policy and suggest the best policies, we will get connected to the policy companies.
- Swastham Own Insurance: Creates Swastham insurance for user convenience.
- Emergency Loan Service: Starting its own loan service for users who did not have any insurance or who needed emergency services.
- Swastham Own Hospitals: For primary treatment and services we will introduce our hospital.
- Services for Non-Swastham Users: Provides services for non-users in Swastham Hospital.
- Rehabilitation Center: To start a rehabilitation care center.

## REFERENCES

1. Rieke N, Hancox J, Li W, Milletari F, Roth HR, Albarqouni S, Bakas S, Galtier MN, Landman BA, Maier-Hein K, Ourselin S. The future of digital health with federated learning. *NPJ Digit Med.* 2020; 3 (1): 119.
2. Cohen AB, Stump L, Krumholz HM, Cartiera M, Jain S, Scott Sussman L, Hsiao A, Lindop W, Ying AK, Kaul RL, Balcezak TJ. Aligning mission to digital health strategy in academic medical centers. *NPJ Digit Med.* 2022; 5 (1): 67.
3. Panda A, Mohapatra S. Online healthcare practices and associated stakeholders: review of literature for future research agenda. *Vikalpa.* 2021; 46 (2): 71–85.
4. Chen D, Zhang R, Liu K, Hou L. Enhancing online patient support through health-care knowledge in online health communities: a descriptive study. *Information.* 2018; 9 (8): 199.
5. Hamza M, Akbar MA. Smart healthcare system implementation challenges: a stakeholder perspective. *arXiv preprint. arXiv:2208.12641.* August 24, 2022.
6. Xu R, Wang Z. Generative artificial intelligence in healthcare from the perspective of digital media: applications, opportunities and challenges. *Heliyon.* 2024; 10 (12): e32364.
7. Guo S, Guo X, Zhang X, Vogel D. Doctor–patient relationship strength’s impact in an online healthcare community. *Inform Technol Dev.* 2018; 24 (2): 279–300.
8. Viswanadham N. Ecosystem model for healthcare platform. *Sādhanā.* 2021; 46 (4): 188.
9. Wan J, Al-Awlaqi MAAH, Li M, O’Grady M, Gu X, Wang J, Cao N. Wearable IoT enabled real-time health monitoring system. *EURASIP J Wireless Commun Netw.* 2018; 2018 (1): Article 298.
10. Vudathaneni VKP, Lanke RB, Mudaliyar MC, Movva KV, Kalluri LM, Boyapati R. The impact of telemedicine and remote patient monitoring on healthcare delivery: a comprehensive evaluation. *Cureus.* 2024; 16 (3): e55534.

11. Babu M, Lautman Z, Lin X, Sobota MH, Snyder MP. Wearable devices: implications for precision medicine and the future of health care. *Annu Rev Med.* 2024; 75 (1): 401–415.
12. Shaheen MY. AI in healthcare: medical and socio-economic benefits and challenges. *ScienceOpen Preprints.* September 25, 2021. doi: 10.14293/S2199-1006.1.SOR-.PPRQNI1.v1.